



**Daikin iTouch Manager  
Install & Commissioning**

**Participant Guide**



**DAIKIN**

COMFORT FOR LIFE

***iTouch Manager  
Installation and Commissioning Guide***

- 1. Introduction***
- 2. Installation***
- 3. Commissioning***
- 4. Control Functions***
- 5. Commissioning Options***
- 6. Auxiliary Device Control***

## ***INTRODUCTION***

- 1. iTM Overview***
- 2. Hardware Specification***

## **1. iTM Overview**

- ① iTM Features**
- ② iTM System Overview**
- ③ DAIKIN supply equipment**
- ④ Field supply equipment**
- ⑤ iTM Functions**

# ① iTM Features



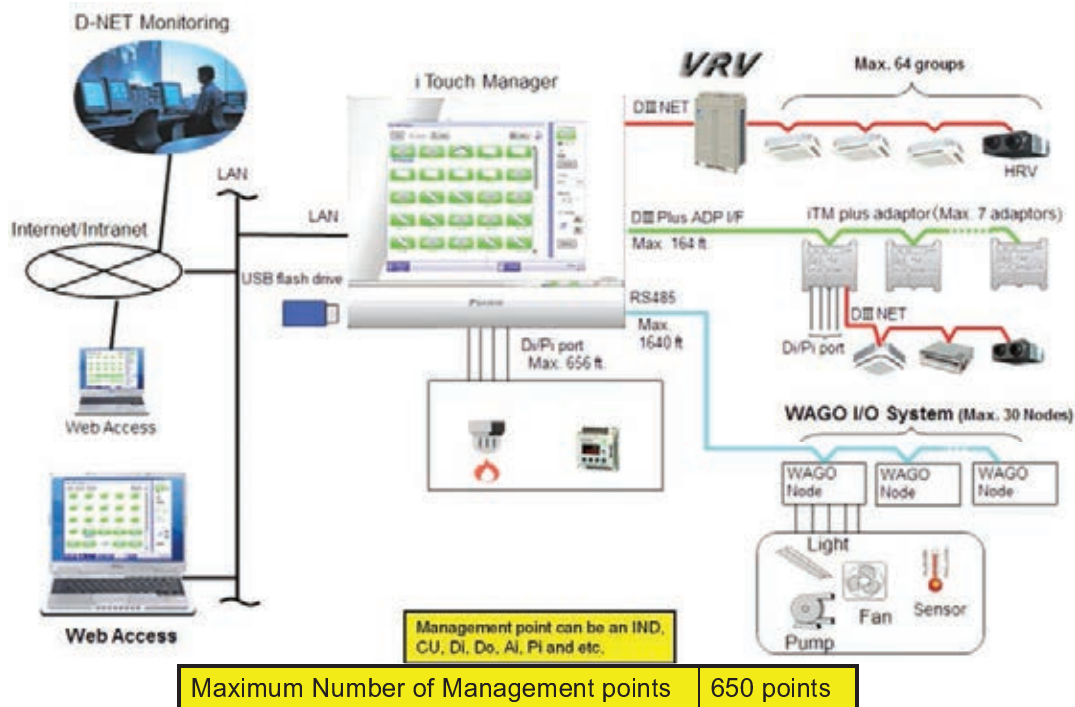
- **Easy operation**
  - Monitor & operate on a diagram by **Layout view**
  - Direct VRV operation by **Operation Window**
  - **Hierarchical zone management** by using “Area”
- **Web Accessibility**
  - Web browser shows **the same screen** as iTouch Manager
- **Automatic control functions**
  - **Many automatic control functions** are supported.  
Schedule, Setback, Timer extension, Interlock, Emergency stop, Automatic changeover
- **Building facilities**
  - Building facilities are connected by using WAGO I/O system
- **History**
  - All operations, automatic controls and status changes are stored in history (up to **500,000** items)

# iTM Features for Installer



- **Easy installation**
  - **Wall / flush mount installation**
  - **Automatic** management point registration
- **Pre-Engineering**
  - Data making and **function setting** can be done on a PC
  - All data can be uploaded by **USB flash drive**

## ② iTM System Overview



## ③ Daikin Supplied Equipment



Equipment	Global model	US model
iTouch Manager	DCM601A51	DCM601A71
iTM plus adaptor	DCM601A52	DCM601A72
PPD option	DCM002A51	DCM002A71

	Item	Note	Model
Required	Daikin iTM Basic Kit	Power Supply Unit 24 VDC, Connector Module, Bus Coupler, End Module	TBD
Di	2 Channel Di Module		TBD
	4 Channel Di Module		TBD
Do	2 Channel Do Module		TBD
Ai	2 Channel Ai Module	4-20 mA, ±10 VDC, 20k Thermistor	TBD
Ao	2 Channel Ao Module	4-20 mA, 0-10 VDC	TBD

Note: WAGO part numbers provide Daikin part number TBD

## ④ Field Supplied Equipment



Equipment	Spec
USB flash drive	USB2.0 Up to 32GB memory can use
PC for Web access	Windows XP Professional SP3 Windows VISTA Business SP2 Windows 7 Professional SP1 Monitor: 1024x768 or more Web browser: Internet Explorer 8, 9 Firefox 10 Flash Player Ver11.1

## ⑤ iTM Functions



Category	Function		Description	Option
Monitor & Operation	Monitor screen	Standard view (Icon)	•Hierarchical management by "Area" •Up to 650 Areas can be registered. (Up to 10 hierarchical levels)	Std
		Standard view (List)	•Various status of operation are displayed on list •Sort management points by each status	
		Layout view	•Monitor and control on floor layout diagram	
	Operation	Operation window	• Not only on/off but also setpoint, fan speed and setback from the top screen	Std
		Detailed setup	• Fan direction, R/C prohibition, Setpoint restriction, Timer extension, etc. can be set	
	Error monitor	Error monitoring	•Error, Analog upper/lower limit error monitoring	Std
		Warning buzzer	•Buzzer sounds when an error detected	
Contact information		•Contact information window		
	History		• 500,000 items stored in history • Operation, automatic control, status change and malfunction information are stored in history • History records who operated • History data can be exported to CSV file.	Std
Remote Access	Web Access		• Not only monitor & operation but also automatic control, system configuration, etc. are available on Web	Std
	E-mail		•Up to 10 E-mail addresses can be registered •Target management points can be registered to E-mail address	

Category	Function	Description	Option
Automatic Control	Schedule	<ul style="list-style-type: none"> <li>Up to 100 programs can be registered</li> <li>On/Off, Operation mode, Cool/Heat setpoint, optimum start, setback setpoint, fan speed, setpoint restriction, timer extension, setback, VAM setting, and analog value can be set</li> </ul>	Std
	Interlock	<ul style="list-style-type: none"> <li>Up to 500 programs can be registered</li> <li>Not only on/off status but also error detection, operation mode change and analog value can be used as triggers</li> <li>Time interval is available for trigger detection condition</li> <li>Cool/Heat Setpoint, Setpoint shift, fan speed, setpoint restriction, timer extension, setback can be set for actions</li> </ul>	Std
	Emergency Stop	<ul style="list-style-type: none"> <li>Up to 31 programs can be registered</li> <li>Target of emergency stop equipment can be registered</li> <li>Manual release is available</li> </ul>	Std
	Setback Control	<ul style="list-style-type: none"> <li>Independent Cool and Heat Setback temperature</li> <li>Setback control is available with detailed setup, schedule program, interlocking control</li> </ul>	Std

Category	Function	Description	Option
Automatic Control	Automatic Changeover	<ul style="list-style-type: none"> <li>iTM measures room temperature and can automatically change over between cooling and heating modes. Fixed, Individual, Average, and Vote</li> <li>Up to 512 groups can be registered.</li> </ul>	Std
	Timer Extension	<ul style="list-style-type: none"> <li>Indoor unit can be stopped automatically after the selected minutes.</li> <li>Timer is selectable from 30, 60, 90, 120, 150, 180Min.</li> </ul>	Std
PPD	PPD	<ul style="list-style-type: none"> <li>Power Proportional Distribution</li> </ul>	US model DCM00 2A71
System	External equipment connection	<ul style="list-style-type: none"> <li>WAGO I/O system (Di, Do, Ai, Ao)</li> </ul>	Std
	Locale setting	<ul style="list-style-type: none"> <li>12/24 hour selectable</li> <li>CSV file format selectable</li> </ul>	Std
	Screen saver	<ul style="list-style-type: none"> <li>3 types of screen saver can be chosen</li> </ul>	Std
D-NET	D-NET	<ul style="list-style-type: none"> <li>Air Conditioning Network Service System</li> </ul>	Service contract

## Commissioning and/or Maintenance Technician Functions

Category	Function	Description
Technician	Management point registration	<ul style="list-style-type: none"> <li>•Automatic groups address detection</li> <li>•Automatic indoor unit model detection</li> <li>•Automatic icon type selection</li> </ul>
Engineering Tool	Pre-engineering tool	<ul style="list-style-type: none"> <li>•Create and modify management points</li> <li>•All function settings</li> </ul>
	Layout view construction tool	<ul style="list-style-type: none"> <li>•Max screen size is 1500x1000 pixel</li> <li>•60 screens can be registered</li> <li>•Point information can be put with icon at the same time</li> <li>•Don't need to put icons one by one (20 icons can put at once)</li> </ul>

## 2. Hardware Specification

- ① iTM Controller
- ② iTM Plus Adaptor
- ③ Available controllers with iTM



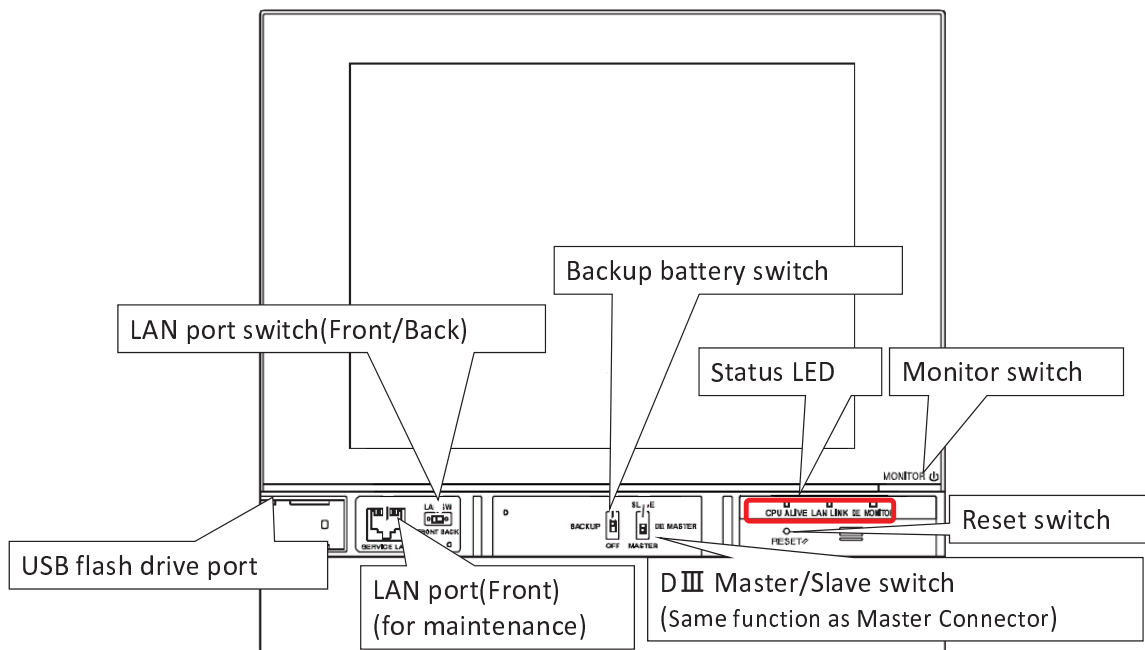
# ① iTM Controller

(Global model:DCM601A5, US model:DCM601A71)

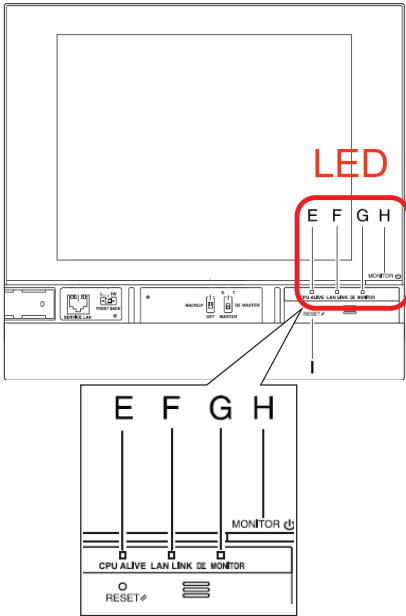
## Input/Output port

Port Type	Number	Use
DⅢ	1ch	DⅢ-NET (Up to 64 groups)
LAN	1ch	Web Access(100BASE-TX ), D-NET
RS485	1ch	External I/O module (Di,Dio, Ai)
Di(Pi)	4ch	1 Emergency stop input (Di1) 3 Digital/Pulse input
iTM Plus ADP IF	1ch	iTM Plus Adaptor (Up to 7 Adaptors)
USB	1ch	USB flash drive (USB2. 0) Max 32GB

## Front

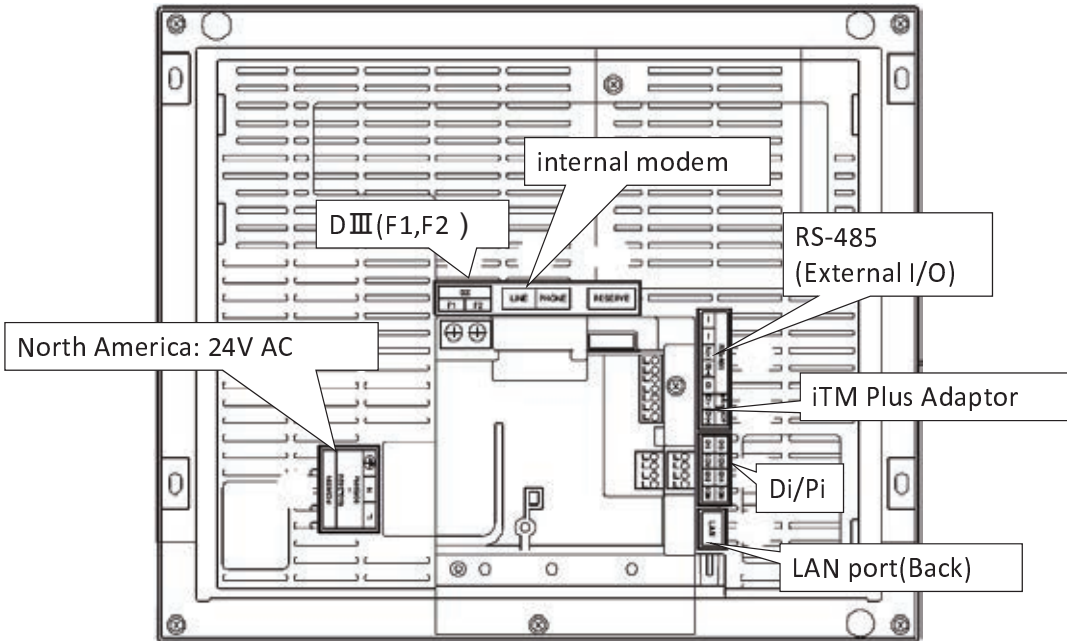


# Status LED



LED		Note												
H	MONITOR	The green/orange LED lights while iTM is powered ON.												
		<table border="1"> <thead> <tr> <th colspan="2">iTM Status</th> <th>LED Status</th> </tr> </thead> <tbody> <tr> <td rowspan="2">Power ON</td> <td>Back light ON</td> <td>ON(Green)</td> </tr> <tr> <td>Back light OFF</td> <td>ON(Orange)</td> </tr> <tr> <td colspan="2">Power OFF</td> <td>OFF</td> </tr> </tbody> </table>		iTM Status		LED Status	Power ON	Back light ON	ON(Green)	Back light OFF	ON(Orange)	Power OFF		OFF
		iTM Status		LED Status										
Power ON	Back light ON	ON(Green)												
	Back light OFF	ON(Orange)												
Power OFF		OFF												
E	CPU ALIVE	The green LED indicates system status.												
		<table border="1"> <thead> <tr> <th colspan="2">iTM Status</th> <th>LED Status</th> </tr> </thead> <tbody> <tr> <td>Normal</td> <td></td> <td>BLINK(0.4sec interval)</td> </tr> <tr> <td rowspan="2">Malfunction</td> <td>Hardware</td> <td>OFF</td> </tr> <tr> <td>Software</td> <td>ON</td> </tr> </tbody> </table>		iTM Status		LED Status	Normal		BLINK(0.4sec interval)	Malfunction	Hardware	OFF	Software	ON
		iTM Status		LED Status										
Normal		BLINK(0.4sec interval)												
Malfunction	Hardware	OFF												
	Software	ON												
F	LAN LINK	The green LED lights when the LAN port is linked.												
G	DIII MONITOR	The yellow LED blinks while data is being sent or received on DIII-NET.												

# Back



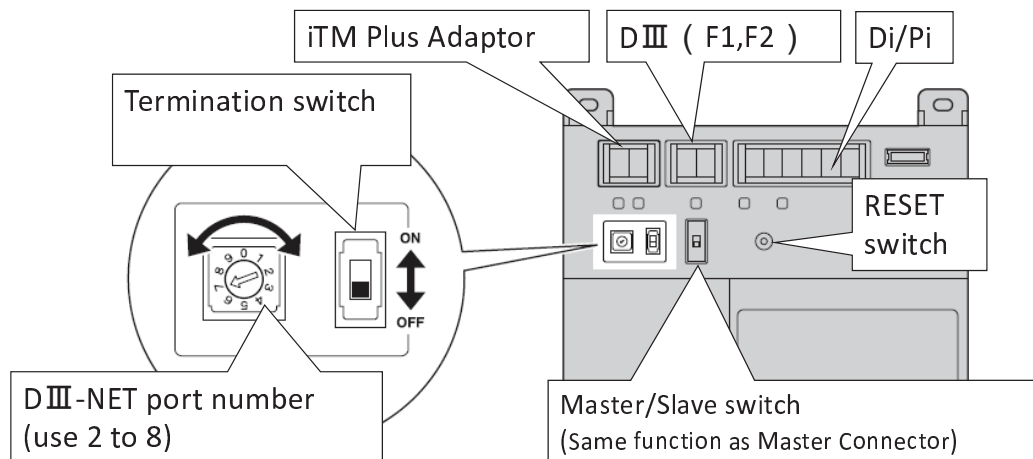
## ② iTM Plus Adaptor

US model :DCM601A72

### Input/Output port

Port	Number	Use
plus ADP IF	1ch	iTM Plus Adaptor ( Up to 7 Adaptors )
DⅢ	1ch	DⅢ-NET(Up to 64 groups)
Di(Pi)	4ch	Emergency stop input, Digital/Pulse input

## iTM Plus Adaptor



### ③ Available controllers with iTM

✓ Available controller with iTM

Controller		Installation with iTM	Remark
BACnet Interface	DMS502B71	✓	R/C Restriction can not be used on iTM.
LON Interface	DMS504C71	✓	
Central Remote Controller	DCS302C71	✓	D3Dio,D3Di can not be used. DIII addresses 5-00 ~ 8-15 can not be used.
Unified ON/OFF Controller	DCS301C71	✓	D3Dio,D3Di can not be used. DIII addresses 5-00 ~ 8-15 can not be used.
iManager III	DAM602A71	Can NOT install with iTM on same DIII-NET	Functions are conflicted, because these controllers have same functions as iTM like an automatic control.  Error code MA will be shown.
iTouch Controller	DCS601C71		
Schedule Timer	DST301BA61		



COMFORT FOR LIFE

*Thank You*



COMFORT FOR LIFE

## ***iTouch Manager Installation and Commissioning Guide***

- 1. Introduction***
- 2. Installation***
- 3. Commissioning***
- 4. Control Functions***
- 5. Commissioning Options***
- 6. Auxiliary Device Control***

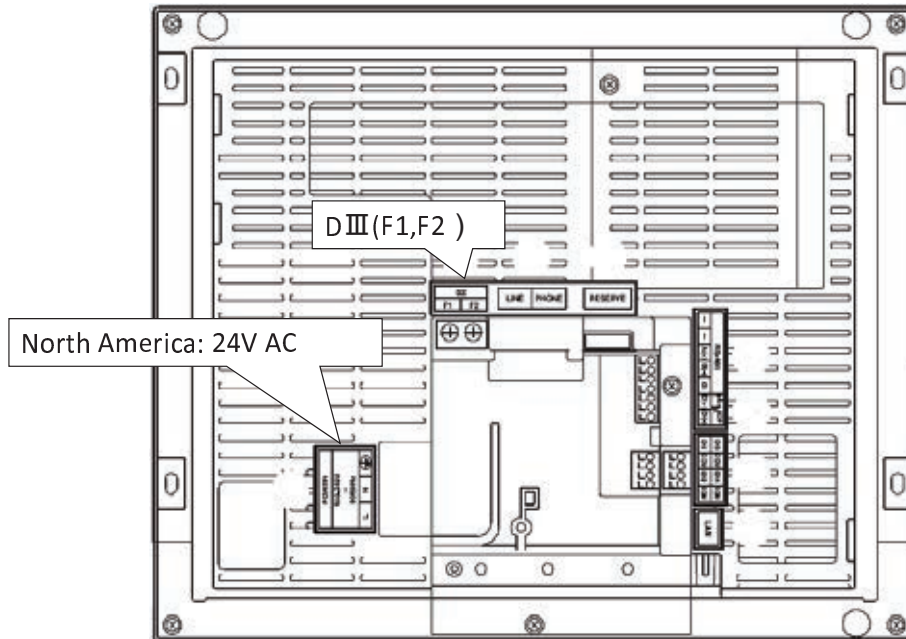
## **INSTALLATION**

- 1. *iTM***
- 2. *iTM Plus Adapter (option)***
- 3. *DIII-NET Wiring***

## **1. *iTM***

### ***Wire Power Supply and DIII-NET Port***

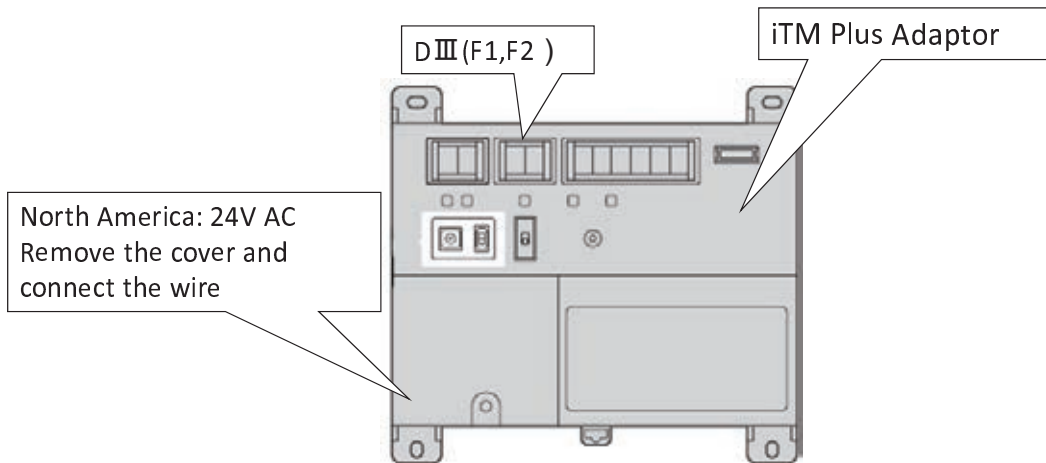
## Wire Power Supply and DIII-NET Port



## 2. *iTM Plus Adapter (option)*

1. **Wire Power Supply and DIII-NET Port**
2. **Wire *iTM* and Plus Adaptor**
3. **Configure *iTM Plus* Adapter Hardware settings**
  - *DIII-NET Master/slave Controller*
  - *Port Number*
  - *Termination*

## 1. Wire Power Supply and DIII-NET Port



## 2. Wire iTM and Plus Adaptor Communication Wire

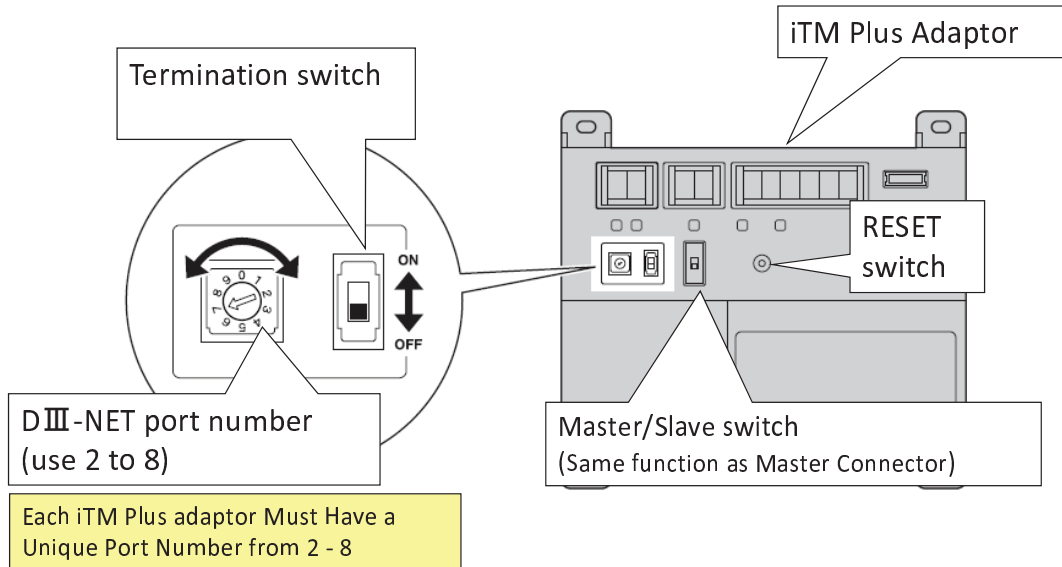
**[Wiring]**  
Be sure to connect the positive wire to the "+" terminal and the negative wire to the "-" terminal.

Termination switch on the Last iTM Plus Adaptor Must be ON

Cable	
Cable type	CPEV or FCPEV cable
Wire size	18 AWG
Cable length	150 feet or less total wiring length for iTM plus ADP IF



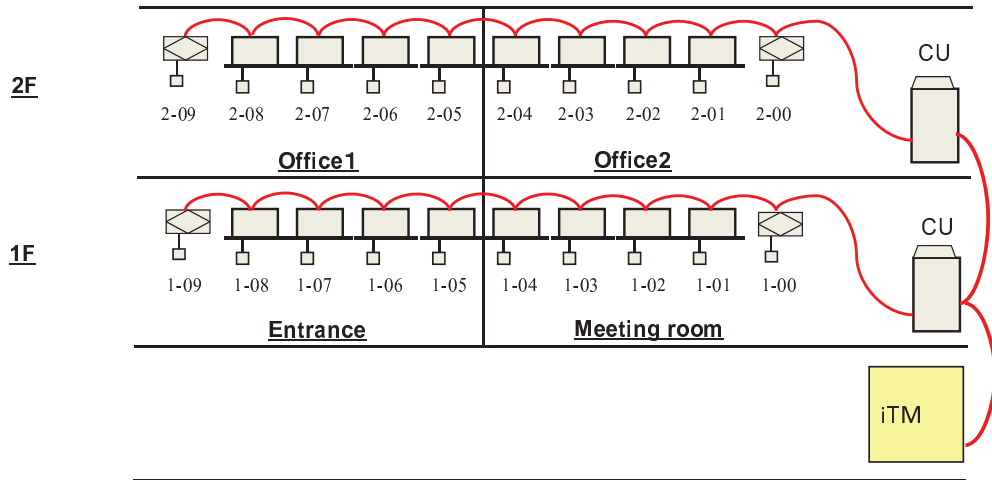
**3. Configure iTM Plus Adapter DIII-NET Master/Slave Controller, Port number and Termination**



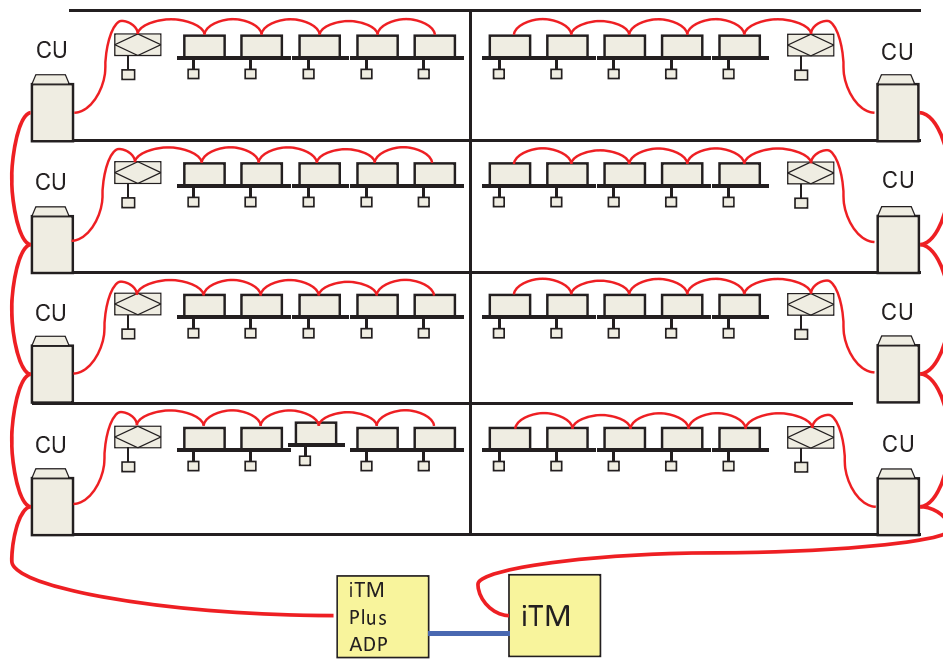
## **3. DIII-NET Wiring**

- 1. iTM Wiring**
- 2. iTM Plus Adaptor Wiring**
- 3. iTM and BACnet Wiring**
- 4. Configure DIII-NET Master/Slave Controller**

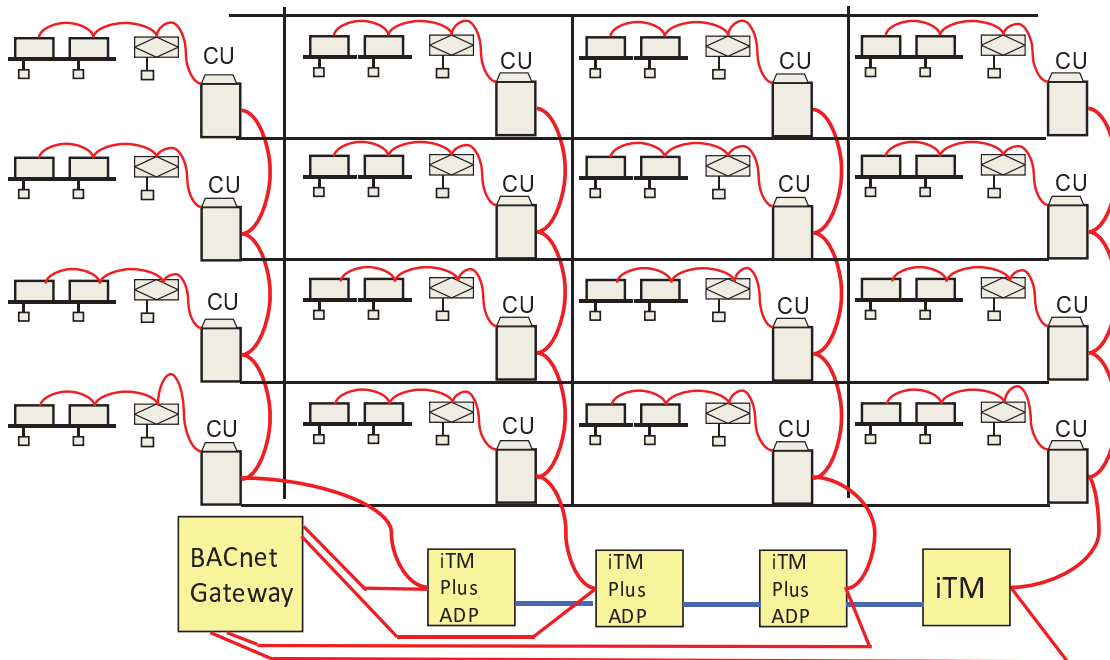
# 1. iTM Wiring



# 2. iTM and Plus Adaptor Wiring



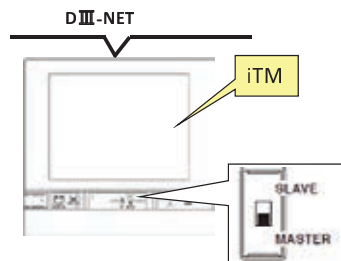
### 3. *iTM* and BACnet Wiring



### 4. **Configure DIII-NET Master/Slave Controller**

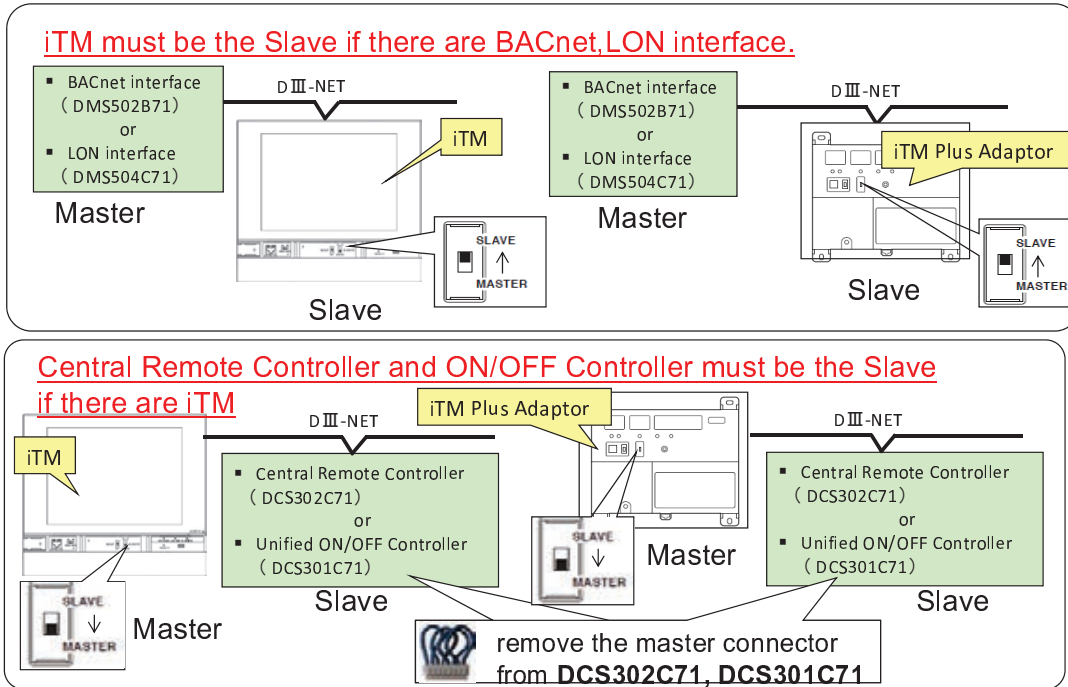
iTM or BACnet/LON Interface should be a DIII-NET Master with the following table.

	iTM	BACnet/LON IF
iTM only	Master	n/a
BACnet IF + iTM	Slave	Master
LON IF + iTM	Slave	Master



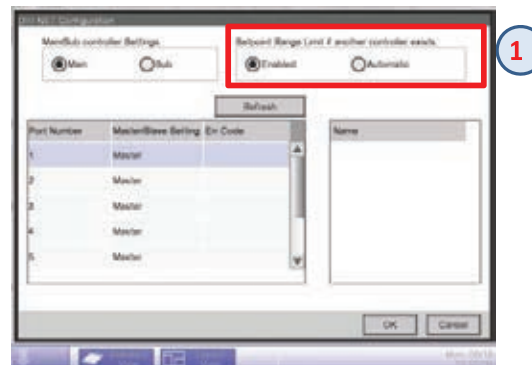
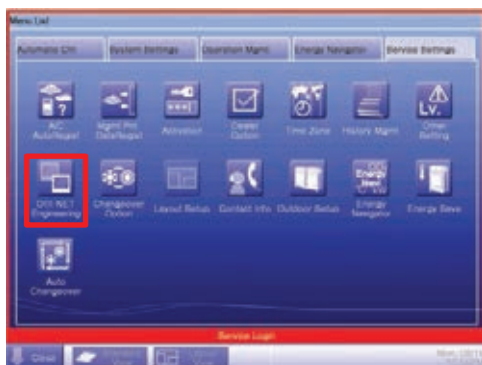
If there are other multi-zone controllers, such as Centralized Controller and/or On/Off Controller, the master connector (blue Jumper) should be removed.

# Master/Slave Setting



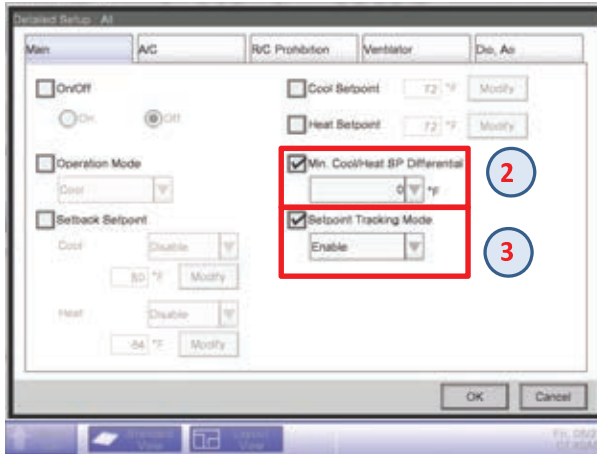
# iTM v2.0 and BACnet/Lon

- When the either the BACnet or Lon interfaces are connected to the iTM with v2.0 the following settings should be made:
  1. Enable the setpoint range limitation (Automatic default setting) under the DIII-Net Engineering menu

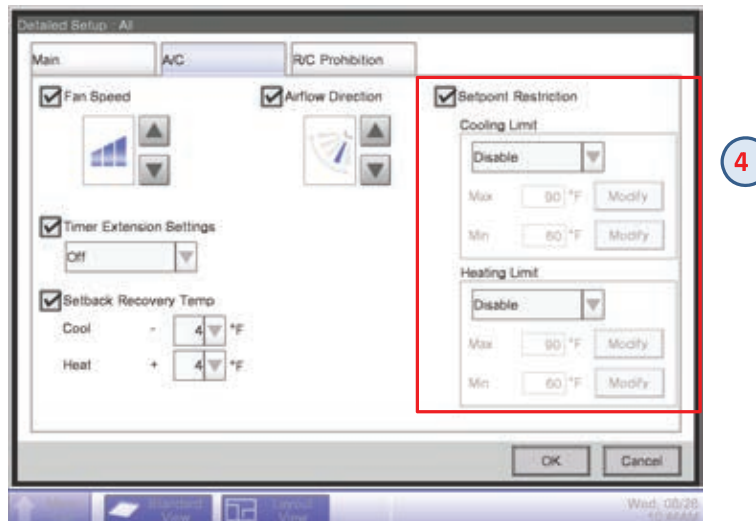


Cont'd...

- To lock the iTM into single setpoint:
  2. Set the setpoint differential to 0°F
  3. Enable the Setpoint Tracking mode



4. Disable the Setpoint Restriction for cool and heat limits





COMFORT FOR LIFE

*Thank You*



## ***iTouch Manager Installation and Commissioning Guide***

- 1. Introduction***
- 2. Installation***
- 3. Commissioning***
- 4. Control Functions***
- 5. Commissioning Options***
- 6. Auxiliary Device Control***

## **COMMISSIONING**

- 1. Before start of commissioning**
- 2. Basic Commissioning Flow from iTM Touch Screen**

- 1. Before start of commissioning**
  - I. Get project information**
  - II. Design Control method of the Project (Area, Group addressing)**
  - III. Get latest version software**



## ***I. Get project information***

Please get the following information from Xpress.

- ***Project drawing***
- ***VRV system information***
  - ***Number of Outdoor Units***
  - ***Number of Indoor units***
- ***Network information***
- ***Control requirements***

## ***II. Design Control method of the Project***

- 1. Design Group Addressing Method***
- 2. Design Control Area Hierarchy***

### **III. Get latest version software**

**Latest version-up tool and presetting tool will be provided by Technical Support Center to qualified Technicians only. Same process as the ITC.**

- **All requests will require, minimum 24 hours for processing**
- **Send request to:**  
**techsupport@daikinac.com**

- 1. Latest Version-up Tool**
- 2. Latest Presetting Tool**

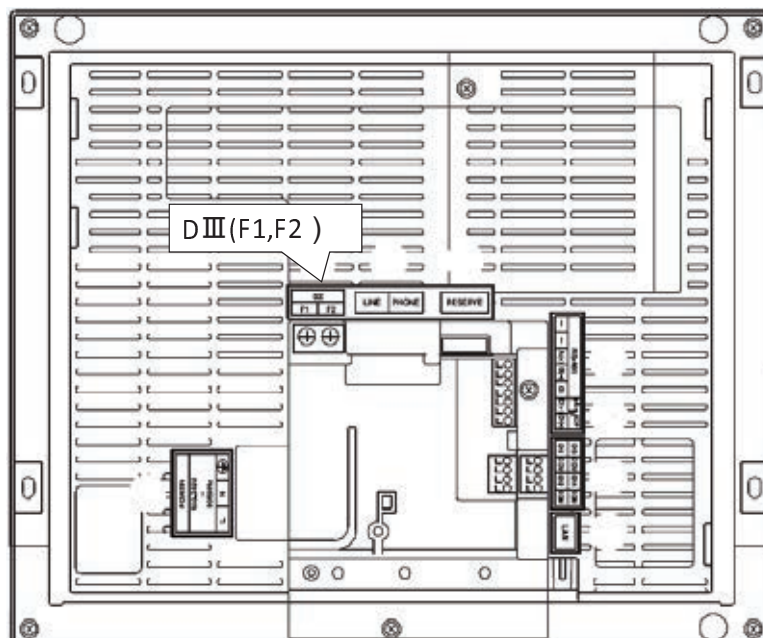
## **2. Basic Commissioning Flow from iTM Touch Screen**

- I. Configure Basic items**
- II. Configure Hardware**
- III. Assign Group Addressing to the indoor units**
- IV. Register Indoor unit from iTM**
- V. Configure Management Points**
- VI. Configure Area**
- VII. Configure Network**
- VIII. Configure Layout View**

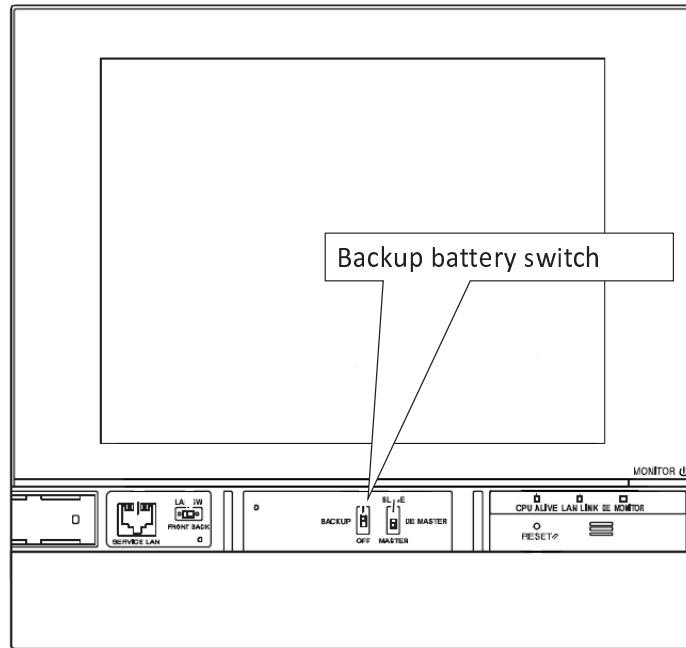
## I. Configure Hardware

1. Check DIII-NET wiring and connections
2. Turn ON Battery Back-up switch
3. Configure DIII-NET Master/Slave Controller
4. Turn Power ON
5. Calibrate Touch Screen

### 1. Check DIII-NET wiring and connections

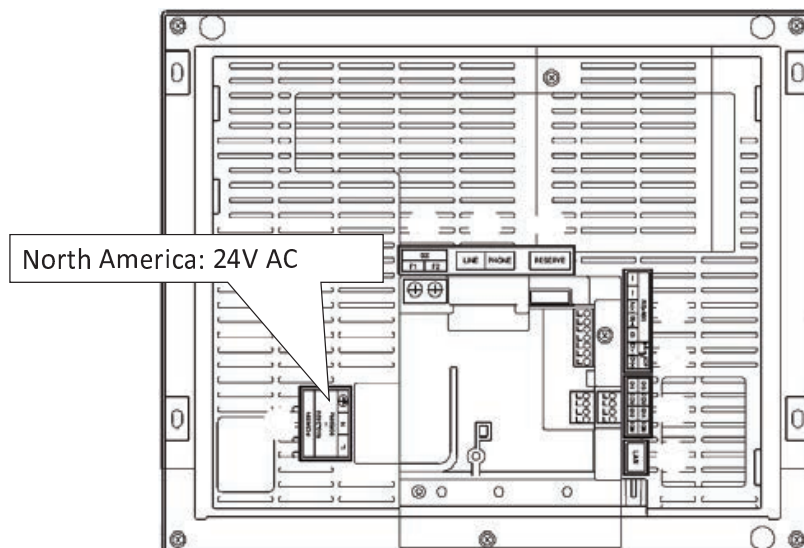


## 2. Turn ON Battery Back-up switch



## 3. Turn Power ON

- Check the 24 VAC connection
- Turn the 24 VAC power supply ON



# Upgrading the iTM to v2.0



- On a newly installed iTM, complete the upgrade procedure before configuring the iTM
- If upgrading a previously installed iTM (version 1.0x)
  - Record any license activation keys previously installed
  - Record all network settings (ex. IP address, subnet mask, default gateway, email settings)
  - Create a backup file of all data
  - Verify all group addresses configured on the system
    - Have a list of all group addresses and their to room names (ex. 1-01 is office 102)
  - If the floor layout view is used
    - Verify and record the location of all indoor unit icons on the floor plan
- **Upgrading from v1.0x to v2.0 will delete/clear ALL data/configurations previous set in the iTM**
  - **Group addresses can be restored by auto registration automatically**
  - Upgrading from v1.0x to v2.0 requires a complete re-commissioning of previously commissioned iTM's
- The PresetLauncher tool for v1.0x will not work with v2.0
  - You must use the v2.0 PresetLauncher Tool once the upgrade is completed

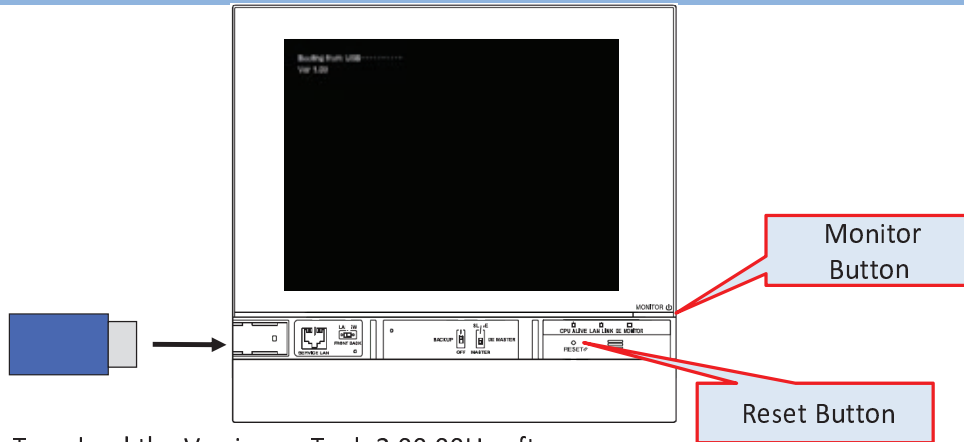
# Installing iTM Firmware



1. Open Versionup Tool\_2.00.00U Folder

2. Copy all files to an empty USB drive

Name	Type	Completed size	Revised	Size	Rate	Date modified
install	Folder					
daikinyesd	Out File	2,240 KB	No	24,288 KB	47%	3/10/2013 4:20 PM
esd.bin	Out File	1,076 KB	No	1,180 KB	91%	3/10/2013 3:56 PM
install.exe	Out File	3 KB	No	6 KB	45%	4/16/2013 4:03 PM

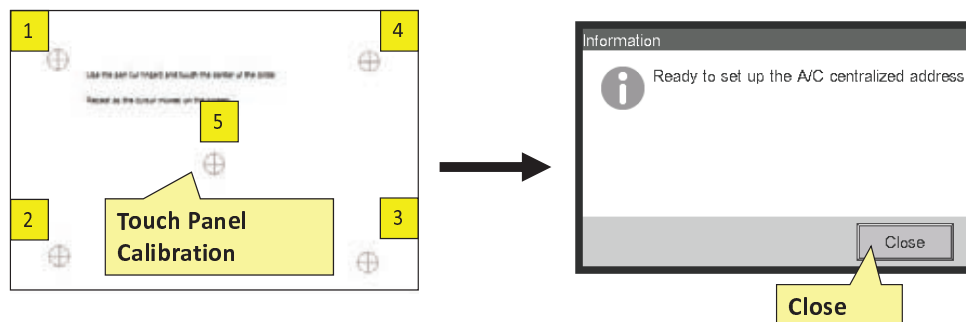


To upload the Versionup Tool\_2.00.00U software:

- Hold the monitor button down
- At the same time press the reset button then release it while continuing to hold the Monitor button down.
- The display will go black
- When the words “Booting from USB...” appear release the Monitor button
- The iTM will then upload the software, follow on screen prompts to complete the process

## 4. Calibrate Touch Screen

After power on, follow the instruction on the screen to calibrate it.



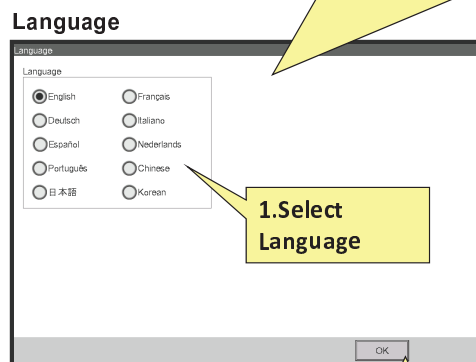
## II. *Configure Basic items*

1. *Language*
2. *Date, Time and Temperature formats and Icon Color*
3. *Time Zone*
4. *Time, Date, Daylight Savings Time (DST)*

### 1. *Language*

Locale(System Setting)

This screen appears after Touch panel calibration.



1.Select Language

2.OK

## 2. Date, Time and Temperature formats and Icon Color

This screen appears after selecting Language

### Locale

Locale

Language: English

Date Display: DDMMYYYY

Time Display:  24h  12h

Celsius/Fahrenheit:  °C  °F

Decimal Point / CSV Separation:  Dot (.) / Comma (,)  Comma (,) / Semicolon (;)

Icon Color:  Start  Start

1. Set up items depending on the region

2.OK

## 3. Time Zone

### Time zone(Service Setting)

Time Zone Settings

Time Zone

- GMT+04:30 Kabul
- GMT+05:00 Islamabad, Karachi, Tashkent
- GMT+05:30 Mumbai, New Delhi
- GMT+06:00 Almaty, Dhaka, Colombo
- GMT+07:00 Bangkok, Hanoi, Jakarta
- GMT+08:00 Singapore, Perth, Beijing, Hong Kong
- GMT+09:00 Seoul, Yakutsk, Tokyo
- GMT+09:30 Adelaide, Darwin
- GMT+10:00 Vladivostok, Sydney, Guam, Hobart

1. Select the time zone of the region.

2.OK



### 3. Time, Date, Daylight Savings Time (DST)

Time/DST(System Setting)

The screenshot shows the 'Time/DST Setup' screen. A callout '1. Modify' points to the 'Modify' button next to the 'Date/Time' field. A callout '2. Set up Date/Time' points to the date and time input fields in a sub-menu. A callout '3. OK' points to the 'OK' button in the sub-menu. A callout '4. Select Enable or Disable. If enabled, select Start date and End date. (US/Canada DST: 2<sup>nd</sup> Sunday in March to 1<sup>st</sup> Sunday in November)' points to the 'Activation' section. A callout '5. OK' points to the 'OK' button at the bottom of the main menu.

### III. Assign Group Addressing to the indoor units

III. Assign group addresses to indoor units, using remote controllers



## IV. Register Indoor unit

### A/C (indoor unit) Auto Register (Service Setting)

The Number of air conditioners which are assigned a DIII-NET address are displayed.

Confirmation Dialog of Restart

Confirm  
 ? Settings have been changed.  
 Reboot now to enable new settings?

Refresh

1.OK

2.Yes

Refresh to reload the up-to-date information.

## V. Configure Management Points (in Service settings Tab)

Service login is necessary for Service Settings

Menu List(Normal mode)

1.Press 1 - 4

2.Input password for Service login.  
 "daikin"

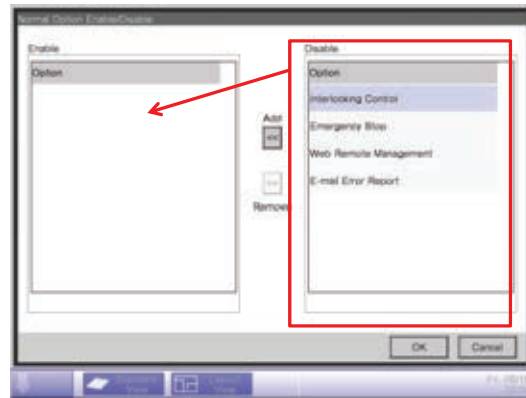
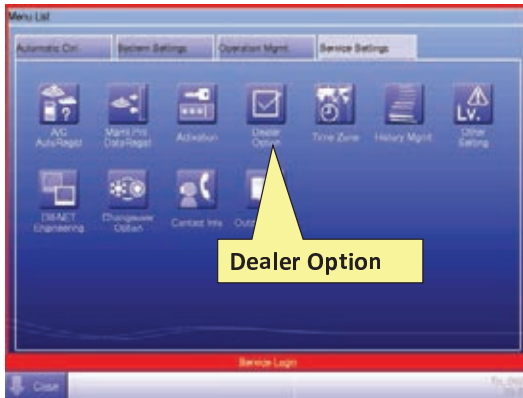
3.Service Settings Tab appears

# Dealer Options



Dealer Option need to be enable in order for the desired function to operate

- Functions must be moved from the disabled column to the enabled column using the [Add] button



# Dealer Options



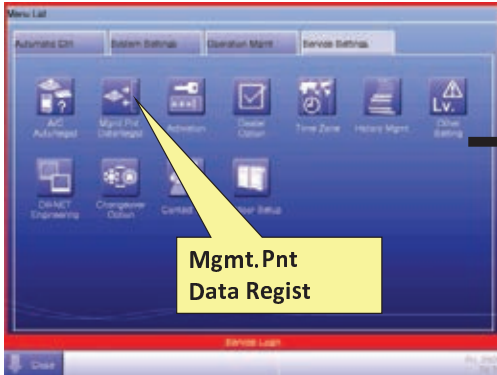
Function	Description	Option
Interlock Control	<ul style="list-style-type: none"> <li>• Up to 500 programs can be registered</li> <li>• Not only on/off status but also error detection, operation mode change and analog value can be used as triggers</li> <li>• Time interval is available for trigger detection condition</li> <li>• Setpoint shift, fan speed, setpoint restriction, timer extension, setback can be set for actions</li> </ul>	Enable if Applicable
Emergency Stop	<ul style="list-style-type: none"> <li>• Up to 31 programs can be registered</li> <li>• Target of emergency stop equipment can be registered</li> <li>• Manual release is available</li> </ul>	Enable if Applicable
Web Remote management	<ul style="list-style-type: none"> <li>• Enable Web Access</li> <li>• Not only monitor &amp; operation but also automatic control, system configuration, etc. are available on Web</li> </ul>	Enable if Applicable
Email Error Report	<ul style="list-style-type: none"> <li>• Up to 10 E-mail addresses can be registered</li> <li>• Target management points can be registered to E-mail address</li> </ul>	Enable if Applicable

# Mgmt Point Registration

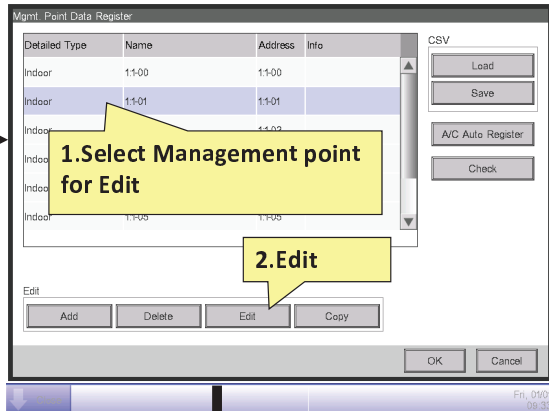


Configure/Edit Management Points (in Service Setting Tab)

## Menu List (Service Setting)



## Mgmt. Point Data Register

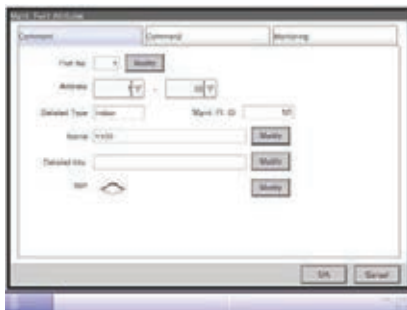


Attributes setup screen(see next page)

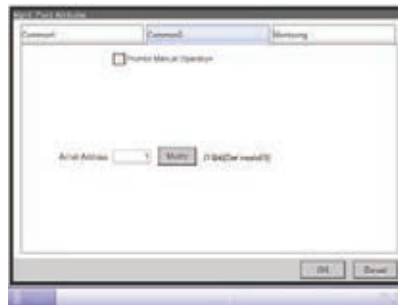


## Indoor unit Attributes setup screen

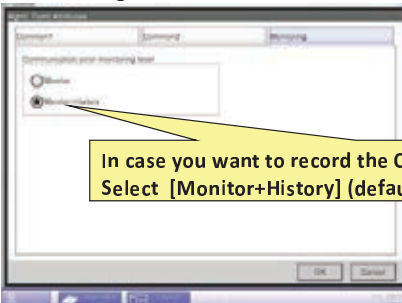
### Common1



### Common2



### Monitoring



In case you want to record the Communication Error as History, Select [Monitor+History] (default)

Register Management point data

**Mgmt. Point Data Register**

Detailed Type	Name	Address	Info
Indoor	11-03	11-03	
Indoor	11-04	11-04	
Indoor	11-05	11-05	
Indoor	12-01	12-01	
Indoor	12-02	12-02	
Ventilator	11-10	11-10	

CSV: Load, Save, A/C Auto Register, Check

Edit: Add, Delete, Edit, Copy

OK, Cancel

Confirmation Dialog for Restart

Confirm: Main unit will be rebooted after saving edited content. Do you want to proceed?

Yes, No

OK, Yes

## VI. Configure Area

Configure Area according to the hierarchy design which was done before commissioning

Area(System Setting)

Select Menu List on Top screen that appears after restarting iTM unit.

To create new Areas at the top level select "Top" and press the [Create] button

**Menu List(System setting)**

**Area Setup**

Name	Level	No. of Area	No. of Mgmt. Points
Top	1	1	0
All	1	1	0
Indoor	2	0	8

Edit: Create, Delete, Mgmt. Points Selection, Attributes, Move

CSV: Save, Load

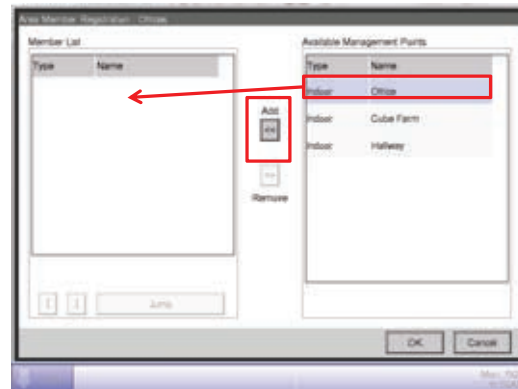
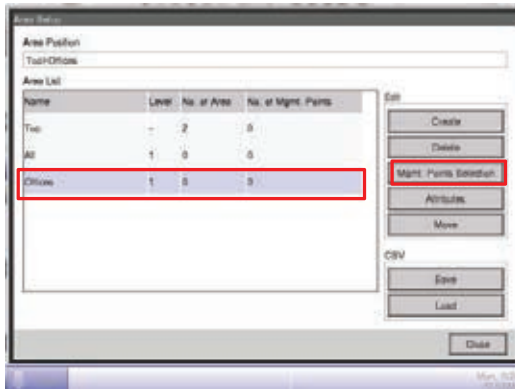
Close

# Area Configuration



Once the Area has been created group(s) need to be registered to the Area.

- Select the [Mgmt Points Registration] button to add groups to the Area
- Select group assignment from the list of available management points
- Use the [Add] button to add groups to the Area



## VII. Configure Network

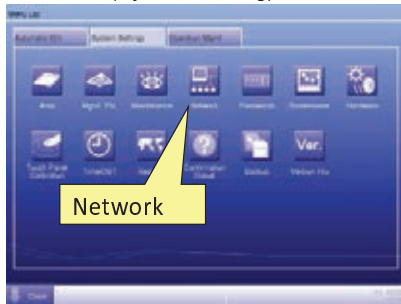
1. *IP addresses*
2. *Email information*

# 1. IP addresses

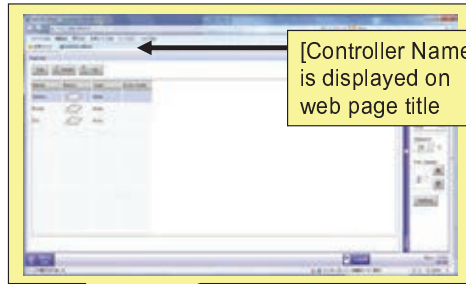
Ask the network administrator of the customer to supply the Network information (IP address(static), subnet mask, Default Gateway, DNS address) and port number before configuring Network settings.

## Network settings

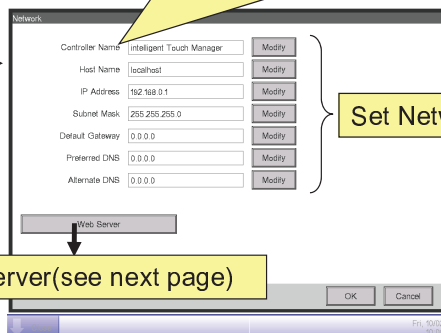
Menu List(System setting)



Network



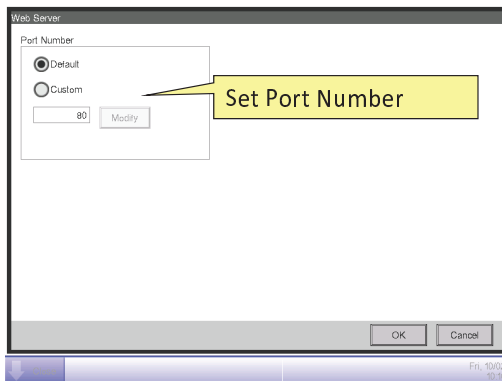
[Controller Name] is displayed on web page title



Set Network

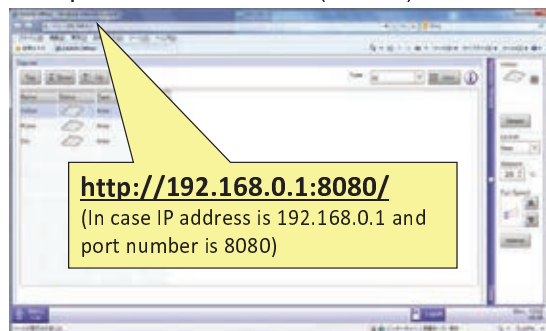
Set Web Server(see next page)

## Web Server



Set Port Number

Port Number is necessary in URL, if port number is not 80(default).



**http://192.168.0.1:8080/**  
(In case IP address is 192.168.0.1 and port number is 8080)

## Connect Network cable

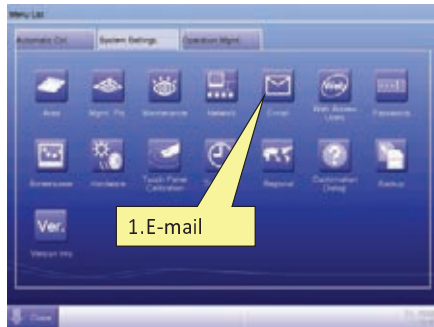
### Caution

The conflict of IP Address occurs if iTM's IP address is the same as customer's PC.  
You must set IP Address correctly that is assigned by customer before you connect iTM to Customer's network.

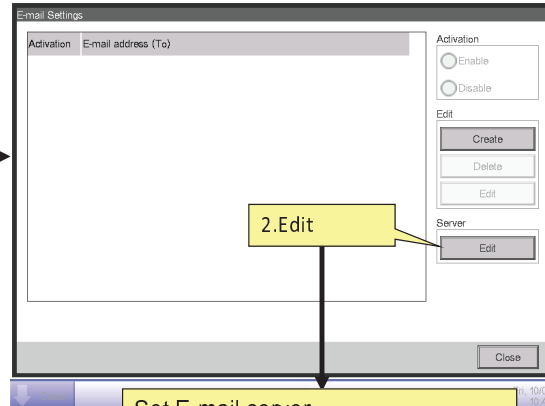
## 2. Email information

### Set E-mail Server

Menu List(System Setting)

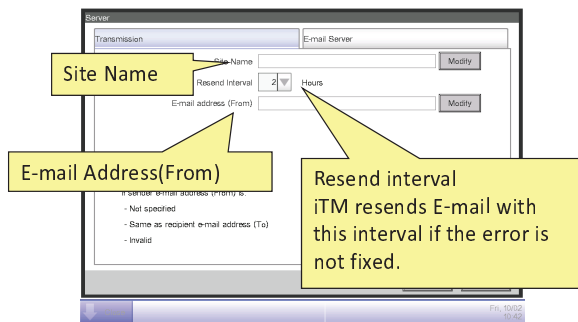


E-mail Settings



Set E-mail server  
(see next page)

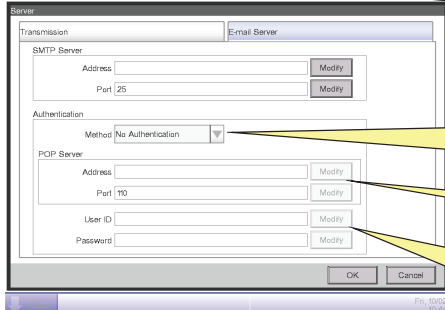
### Set alert mail sender information



#### E-mail

From: **itm@daikin.co.jp** ← E-mail Address(From)  
 To: user012@daikin.co.jp ← Site Name  
 Subject: Fault occurs(SiteA)  
 01/13 14:11 Office1 A9  
 01/13 14:10 Office2 E0  
 Remaining mails: 2

### Set E-Mail server information



Ask the Network administrator of customer-side about these settings.

Method  
 [No Authentication]  
 [POP Before SMTP]  
 [SMTP-AUTH]

Set POP Server for [POP Before SMTP]

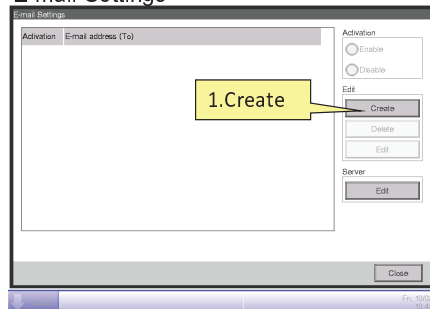
Set User ID, Password for [POP Before SMTP]  
 [SMTP-AUTH]



## Add E-mail address and E-mail alert targets

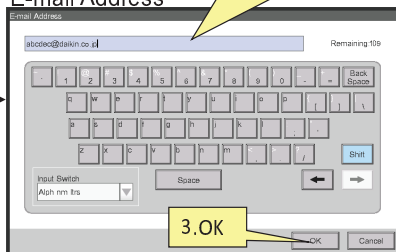
### Add E-mail address

#### E-mail Settings

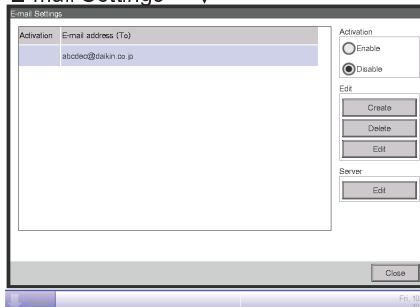


#### E-mail Address

2. Set E-mail address

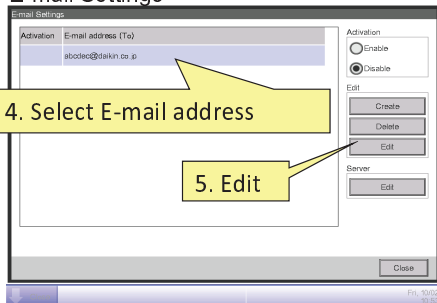


#### E-mail Settings

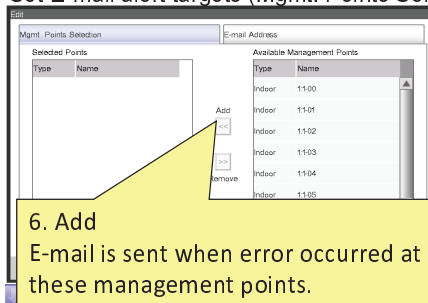


## Set E-mail alert targets

#### E-mail Settings



#### Set E-mail alert targets (Mgmt. Points Selection Tab)



#### Trial mail

From: iTM@daikin.co.jp

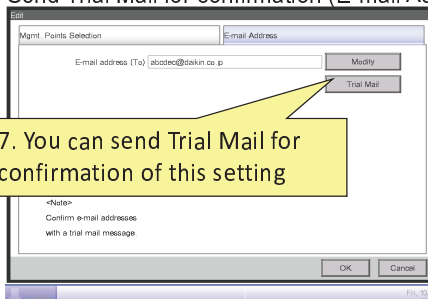
To: user012@daikin.co.jp

Subject: Trial mail (SiteA)

This is trial mail

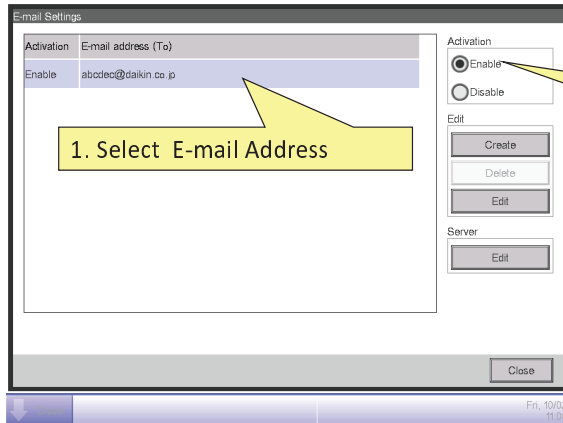
Site Name: SiteA

#### Send Trial Mail for confirmation (E-mail Address Tab)



## Enabling E-mail

### E-mail Settings



Activation	E-mail address (To)
Enable	abodec@daikin.co.jp

Enable  
 Disable

Edit  
 Create  
 Delete  
 Edit

Server  
 Edit

Close

2. Select Enable for starting E-mail alert

1. Select E-mail Address

## Exercise 1

- Performing the Initial Settings

## VIII. Configure Layout View

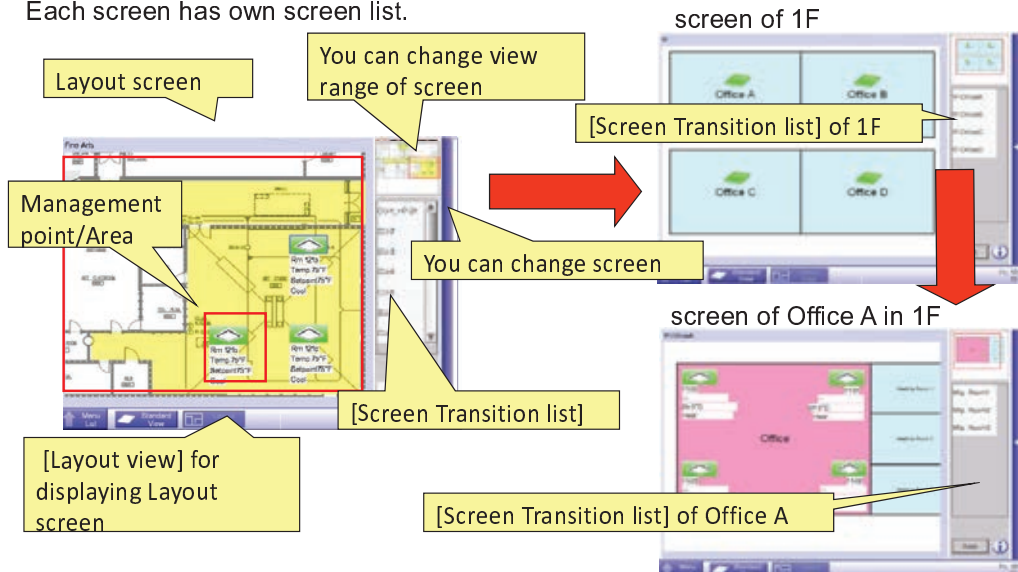
- ① What is Layout Screen?
- ② Specification of Layout screen
- ③ Installation Overview
- ④ Setting Procedure

### Appendix

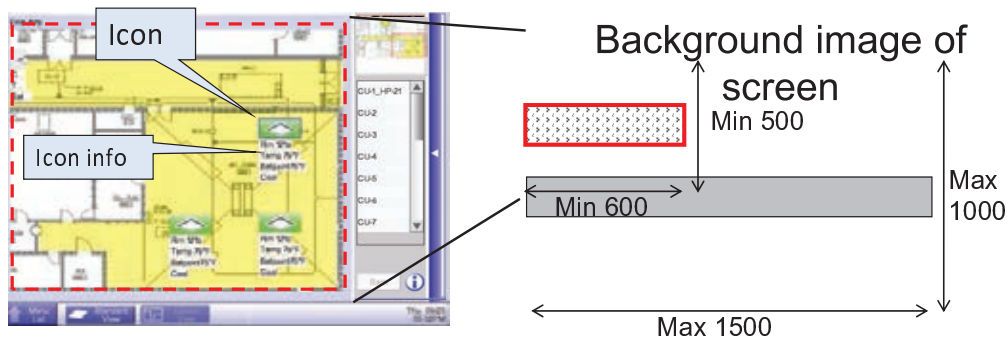
- A1. How to get Layout data from iTM
- A2. How to load full Project data which is including Layout data

## ① What is Layout screen?

Customer can monitor and operate the Management point/Area on layout screen.  
 The Icon and its information are displayed on layout screen.  
 The layout screen is changed when you select screen name in Screen Transition list.  
 Each screen has own screen list.



## ② Specification of Layout screen

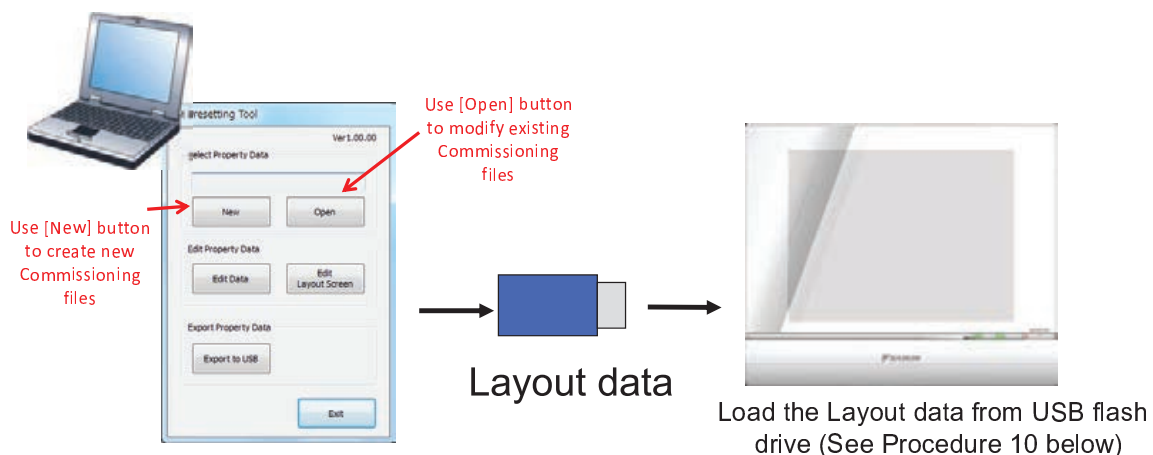


Item	Spec
Screen	Max 60 screens can be registered
	The screen name must be unique in all screens. Max 20 characters
Background image of screen	JPEG (Max 500 Kbytes per an image)
	600 pixel(width) × 500 pixel(height) to 1500 pixel × 1000 pixel
Icon of Area/Management point	Max 100 icons per a screen
Icon info(Auxiliary Information)	Max 300 information per a screen

## ③ Installation Overview



The layout data can only be configured with Pre-engineering tool on a PC  
Then the layout data can be imported to iTM by using a USB flash drive



### Pre-engineering tool

Make Layout data (See Procedure 1-8 below)  
Copy the Layout data to USB flash drive (See Procedure 9 below)

# ④ Setting Procedure



Start

Work on PC

1. Prepare the JPEG file of Background from CAD data of building

2. Start Layout setting tool

Use Pre-engineering tool (Service login is necessary for Layout screen settings) to make Layout data.

1. Service Login

Click ① ~ ⑤ and input password (daikin) for Service login, then Layout button appears.

Select Project data folder on PC to open

Note: If you don't have project data on PC, see Appendix A1.

Layout setting tool (see next page)

# Layout setting tool on PC



You can edit Layout screen here.

You can change the view range of this screen

Registered screen list of this project. You can select Layout screen to edit.

You can add/modify/delete screen.

You can preview the Layout screen that will be displayed on iTM.

Selected Layout screen is displayed. You can make a layout of icon and icon info here.

Screen Transition List of currently selected Layout screen

You can add/delete Management points/Area onto layout screen and arrange the location of them.

Work on PC

### 3. Register Layout screen

Add a new screen and register it to this project.

1. [Add] new screen

Screen name and background image can be changed by [Screen Settings] button any time.

2. Create screen name

3. Select JPEG file for background image

4. OK

Work on PC

### 4. Add Management point/Area

You can put icon and icon info onto layout screen.

1. Select screen

2. [Add] Area/Mng point

3. Select Areas/Management points to put onto screen (Max 20 Areas/Management points can be selected at once) - use [Ctrl] / [Shift] key to select multiple lines

4. Display Information To choose which information is displayed (see next page)

5. OK

6. The selected Icon and icon info are displayed on the screen

### Set display information for indoor

Display Information Settings

Indoor

- Icon
- Name
- Room Temperature
- Setpoint
- Operation Mode

OK Cancel

If you mark the check, its information is displayed on screen

### Set display information for VAM

Display Information Settings

HRV

- Icon
- Name
- Operation Mode

OK Cancel

### Set display information for Di/Dio

Display Information Settings

Dio

- Icon
- Name

OK Cancel

### Set display information for Analog

Display Information Settings

Analog

- Icon
- Name
- Analog Value

OK Cancel

### Set display information for Pulse

Display Information Settings

Pulse

- Icon
- Name
- Amount Used

OK Cancel

### Set display information for Area

Display Information Settings

Area

- Icon
- Name

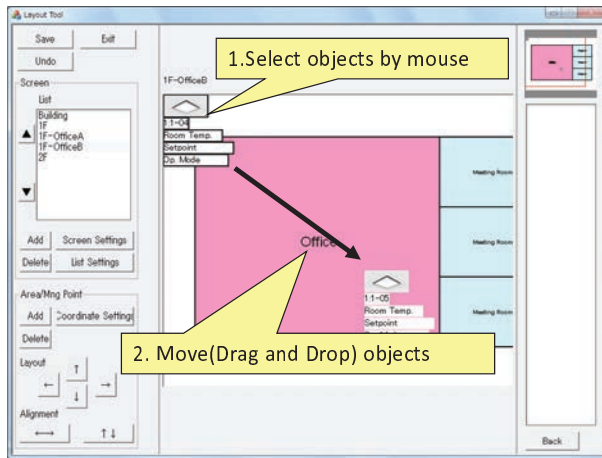
OK Cancel

Work on PC

**5. Move the icon and icon info to correct place**

**[Method 1] : Drag and Drop**

You can move the icon and icon info by using Drag and Drop of mouse operation.



How to select multiple objects

**[Method1]**  
 1. press left button of mouse at ①  
 2. move mouse to ②  
 3. release left button

**[Method2]**  
 1. click A  
 2. press [Ctrl] key and click B  
 3. press [Ctrl] key and click C

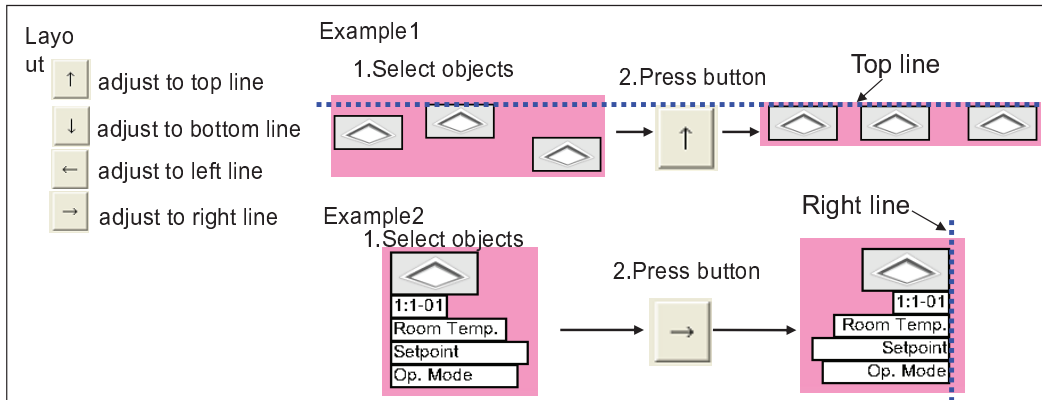
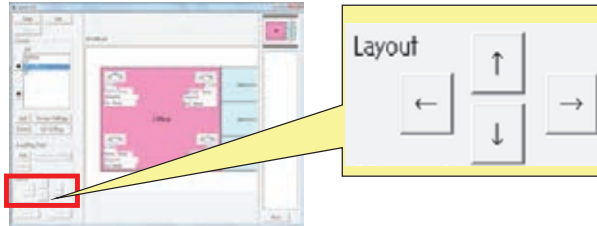
**[Method 2] : Coordinate Setting**

You can set coordinate of selected objects



### [Method 3] : Adjusting

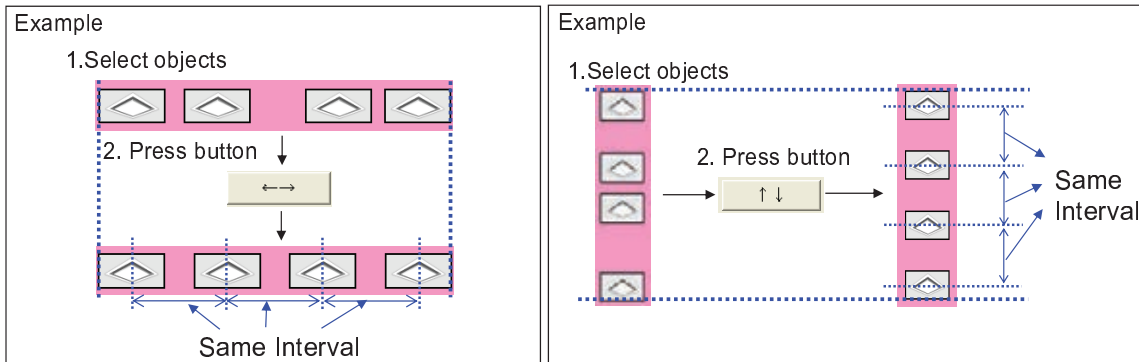
You can adjust the location of selected objects



You can adjust the location of selected objects



### Alignment



Work on PC

### 6. Set up Screen Transition list of selected layout screen

You can register screens where you can transit from currently selected screen.

1. Select screen

2. [List Settings]

3. Set up screen list

add to list/  
remove from list

change order of list

4. OK

The top screen of registered screens list will be displayed on initial Layout screen of iTM at startup.

Registered screens are displayed in this screen transition list

Work on PC

### 7. Save Layout data in Project data folder

Save

### 8. Finish Layout data tool

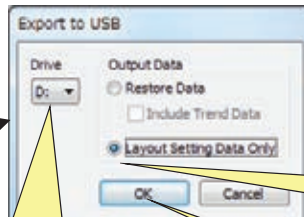
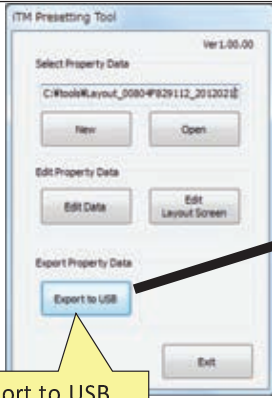
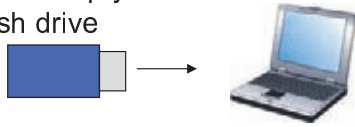
Exit

Work on PC

9. Copy Layout data to USB flash drive

Created Layout data has to be copied to USB flash drive for installation to iTM.

Insert empty USB flash drive



Note:  
see Appendix A2  
about Restore data

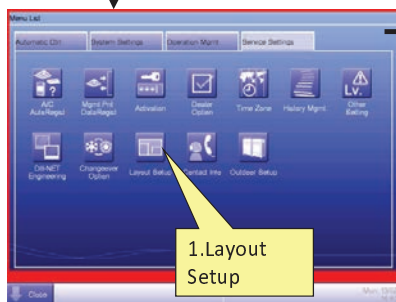
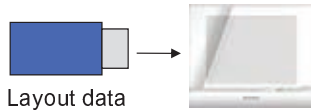
3. Select  
[Layout Setting Data Only]

4. OK

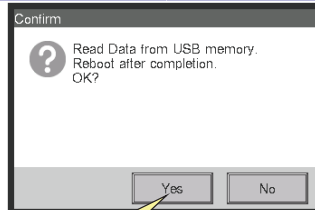
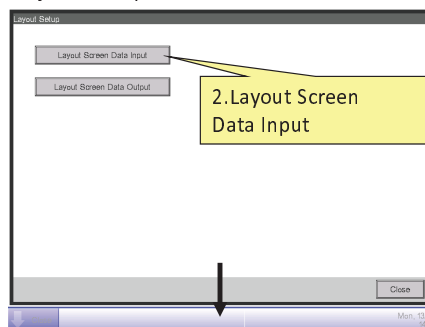
Work on iTM

10. Load Layout data to iTM from USB flash drive

Insert USB flash drive



Layout Setup



Note: In case Layout data have been not installed once. Layout Setup icon is not shown on service settings even if you logon service mode. You need to input the special password (daikindaikin) for layout setup.

End

## Exercise 2

- Floor Plan Creation



## Appendix

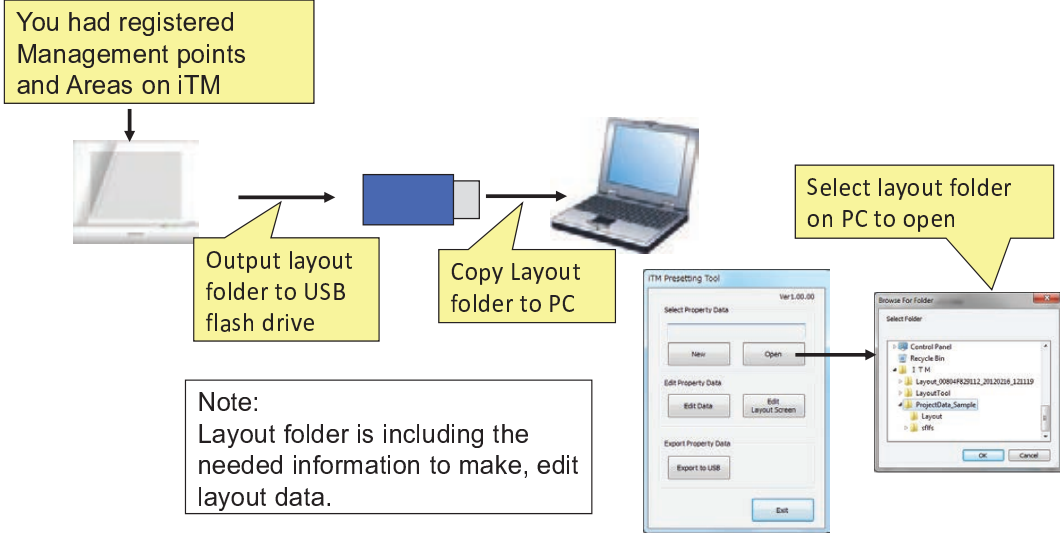


# A1. How to get Layout data from iTM



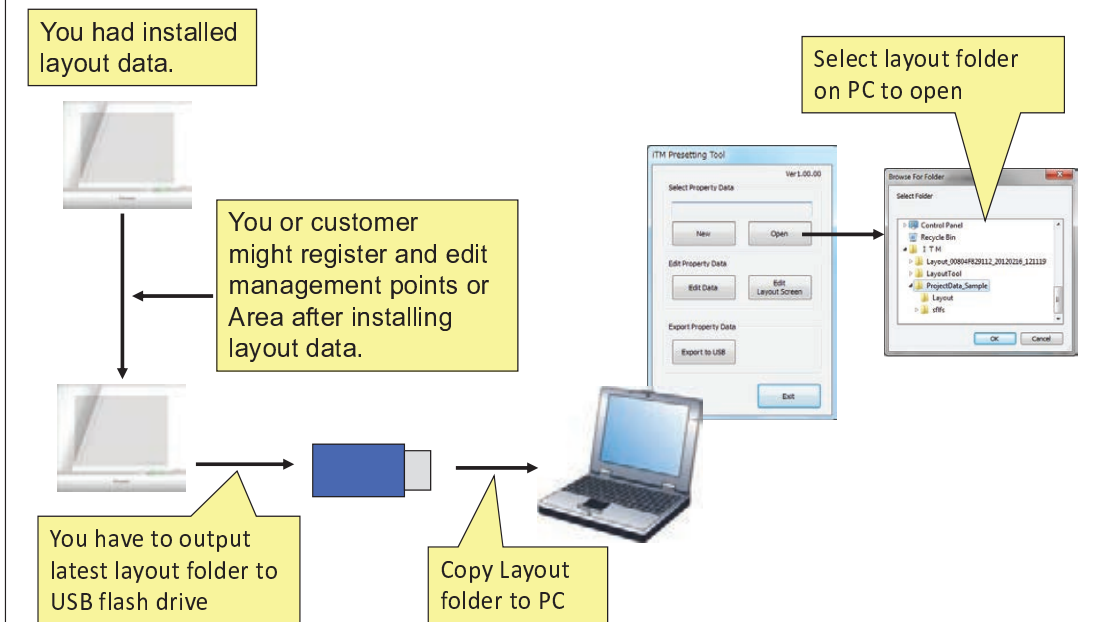
## [Situation1]

In case you installed without Pre-engineering tool, you don't have the project data on PC. You can get layout folder from iTM to make layout data.

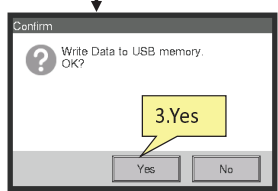
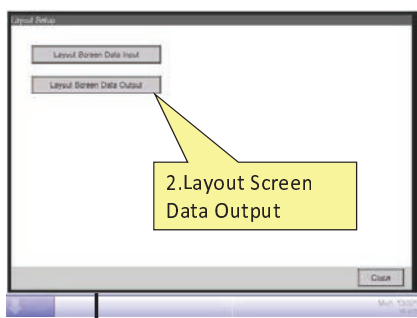
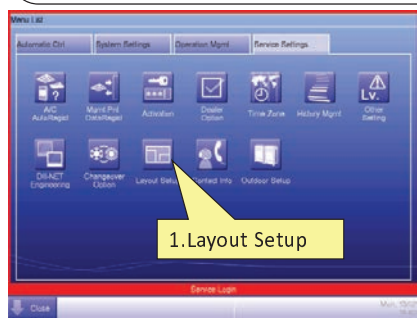
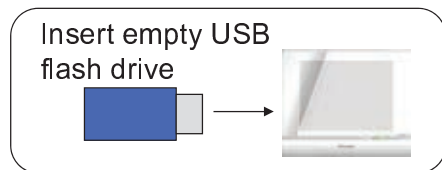


## [Situation2]

In case you want to edit layout data, you have to get latest layout folder for editing.

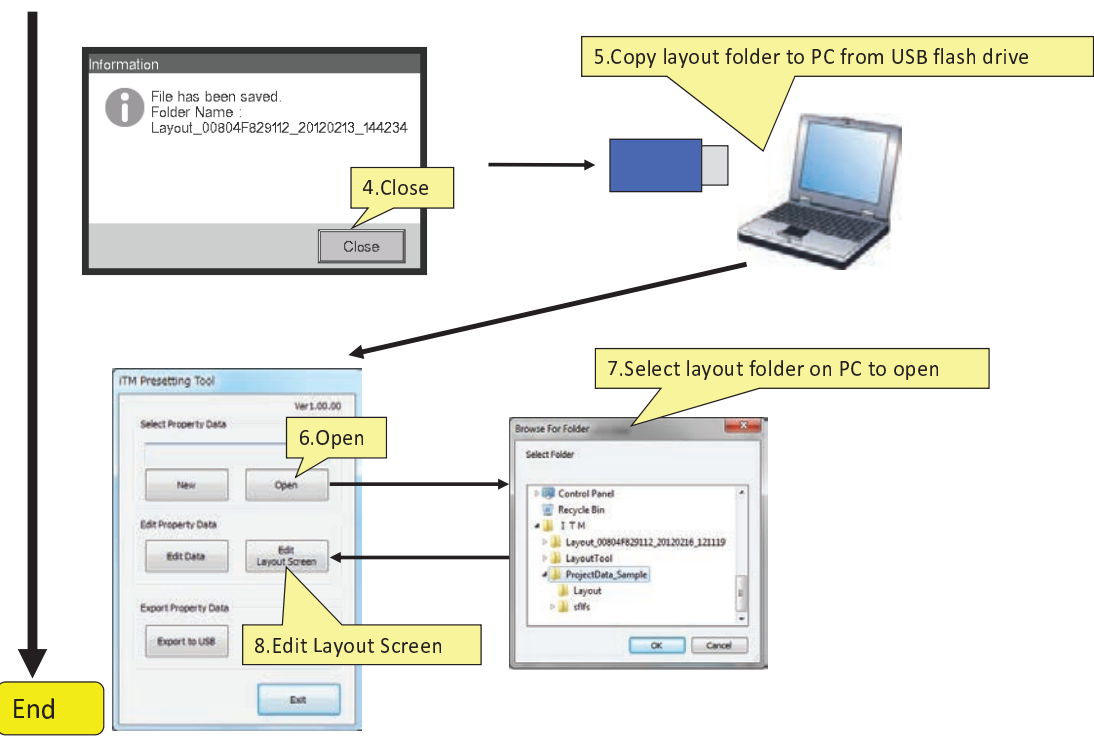


**Start** Procedure of getting Layout data from iTM



Note:  
 [Situation 1] In case Layout data have not been installed once. Layout Setup button is not shown on service settings even if you logon service mode. You need to input the special password for layout setup.  
 [Situation 2] Layout Setup button is shown by service mode normally if you had already installed layout data.

→ see next page



## A2. How to load full Project data which include Layout data

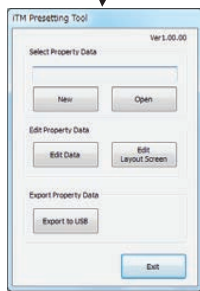


[Situation]

In case you make project data which includes management points, areas, automatic controls, etc. with Pre-engineering tool.

Output Restore data If you want to load full project data which include layout data.

You make project data and layout data.



Output Restore data to USB flash drive



Load Restore data

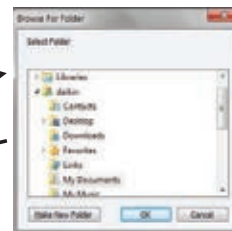
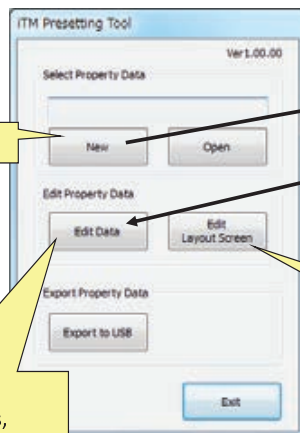


Note:  
Restore data is full project data. it is including layout data too.



Start

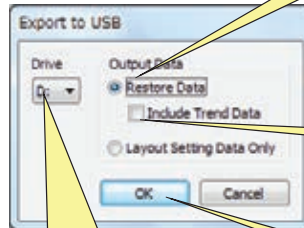
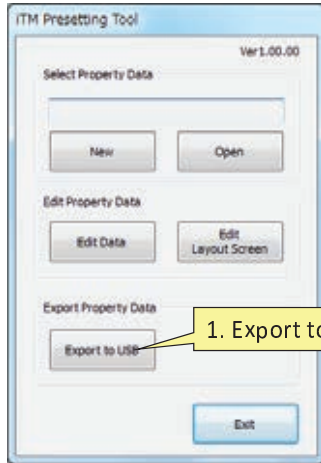
Create project data and make layout data by Pre-engineering tool.



2. Edit Data  
Edit Management points,  
Area, Automatic control, etc.

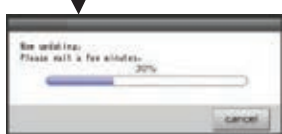
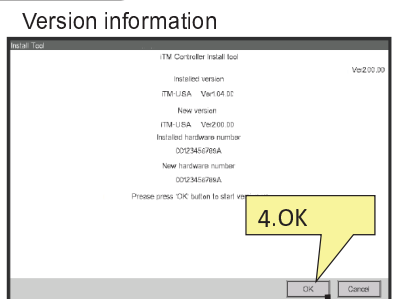
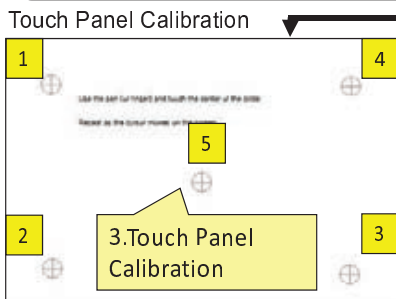
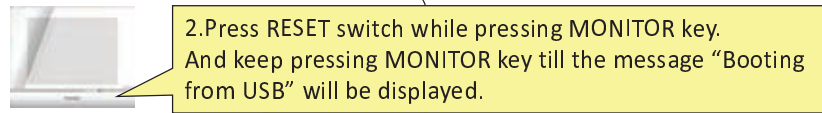
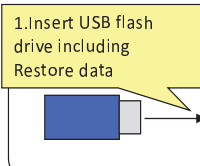
3. Edit Layout Screen  
Edit screen name, background  
image, screen transition list, etc.

Make Restore data after editing Layout data



Note  
Don't use Restore data when you want to load only layout data into iTM.

Load Restore data into iTM



End





COMFORT FOR LIFE

*Thank You*



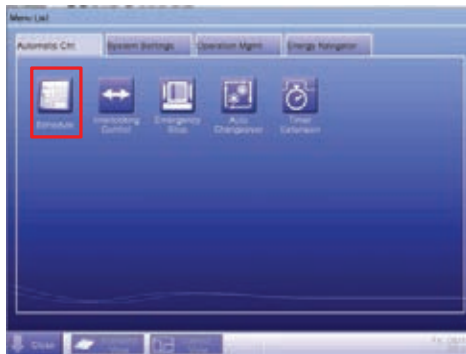
## ***iTouch Manager Installation and Commissioning Guide***

- 1. Introduction***
- 2. Installation***
- 3. Commissioning***
- 4. Control Functions***
- 5. Commissioning Options***
- 6. Auxiliary Device Control***

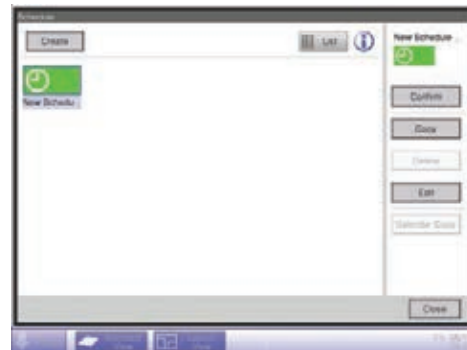
## CONTROL FUNCTION

1. **Schedule**
2. **Setback**
3. **Timer Extension (Unoccupied override)**
4. **Auto changeover**
5. **Emergency Stop**
6. **Interlock**
7. **Temperature Limit**

## 1. Schedule



Menu List

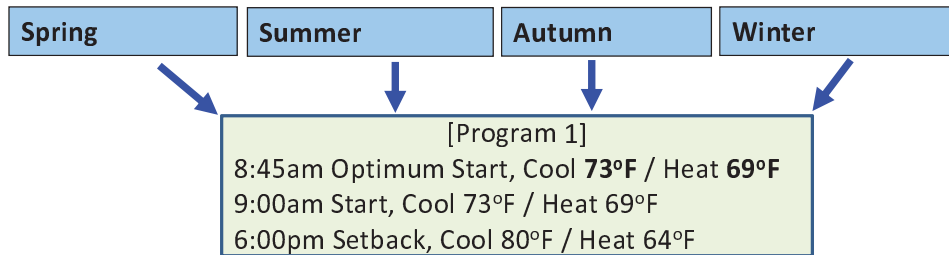


Schedule

# Schedule control for a year



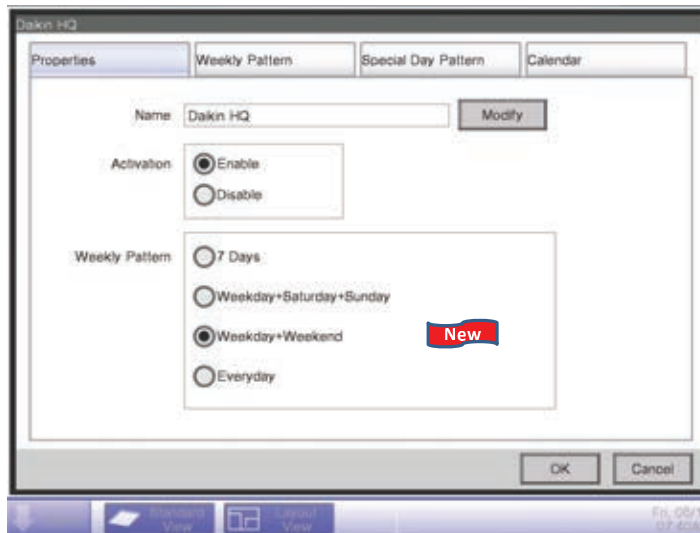
Independent Cool and Heat setpoints and Independent Setback setpoints allow for one schedule to be set to run year round



# Scheduling

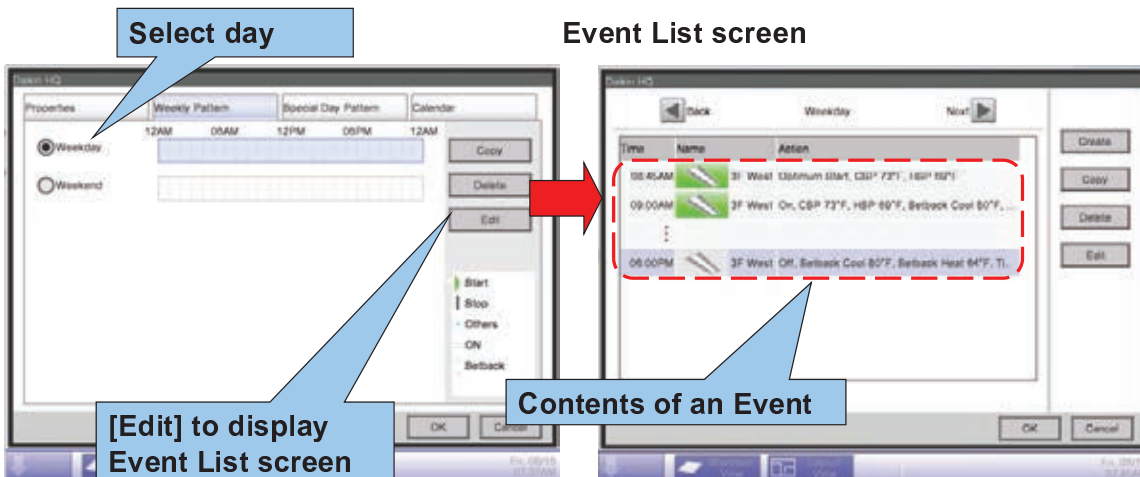


- Up to 100 schedule programs can be created
- 7 day , 5 + 2 (Weekday + Weekend), 5 + 1 + 1 (Weekday + Saturday + Sunday), 1 (Everyday)



# Weekly pattern

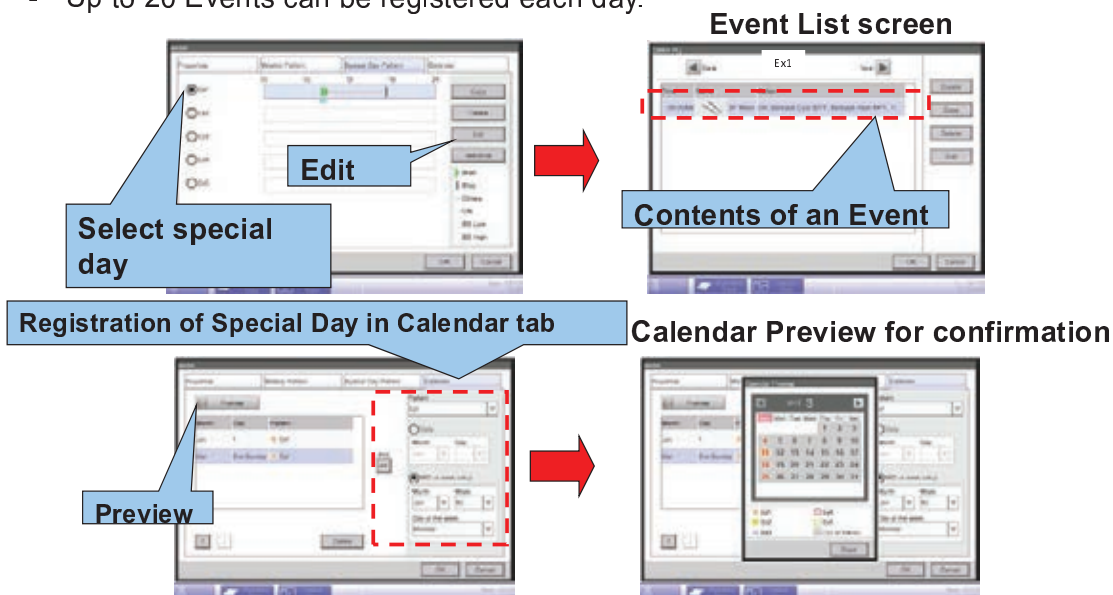
- 7 day , 5 + 2 (Weekday + Weekend), 5 + 1 + 1 (Weekday + Saturday + Sunday), 1 (Everyday)
  - Up to 20 Events can be registered each day.



# Special Day pattern

Special Day (such as holiday)

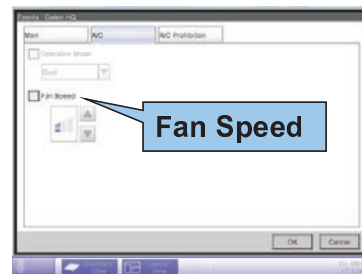
- Up to 5 Special Day patterns (Ex1-Ex5) can be registered.
- Up to 20 Events can be registered each day.



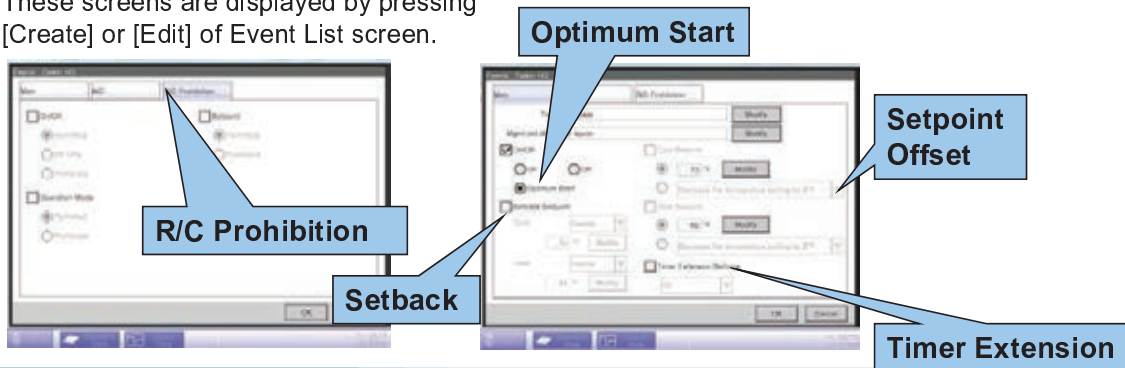
## Event of Schedule

Event is Not only Start/Stop, Setpoint, Operation Mode.  
The following actions are also available.

- Optimum Start
- Setback
- Timer Extension
- Setpoint offset
- R/C Prohibition
- Fan Speed

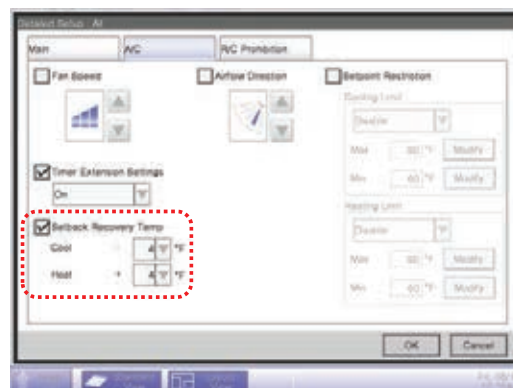
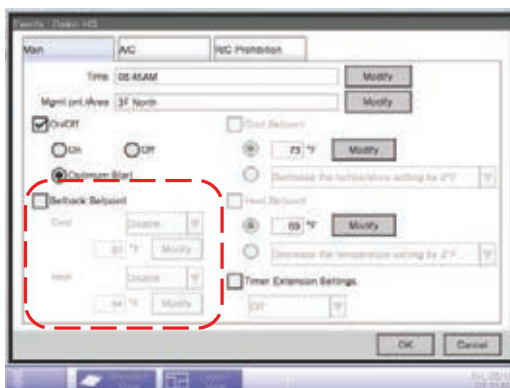


These screens are displayed by pressing [Create] or [Edit] of Event List screen.



## 2. Setback

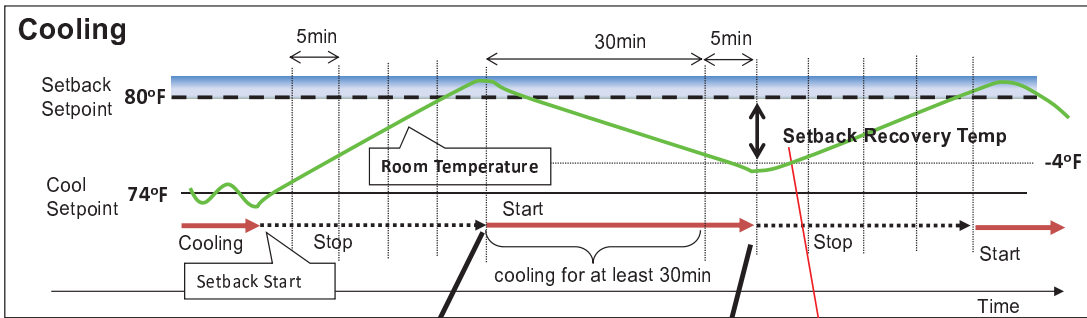
- The setback for iTM v2.0 provides independent setback setpoints for cooling and heating
- By default the setback setpoints are disabled and can be enabled by the schedule, interlock, and settings features
  - The default setback for cooling is 80°F (configurable)
  - The default setback for heating is 64°F (configurable)
  - Independent Setback Recovery Temp for cooling (-4°F default) and heating (+4°F default)
    - Configurable from 2°F – 10°F



# Detail of Setback Control (Cooling)

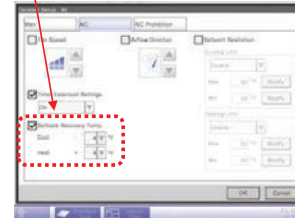


Setback controls as follows.



### Decision of cooling start

- Decision time is every 5 min
- Condition  
Room temperature  $\geq$  Setback Setpoint



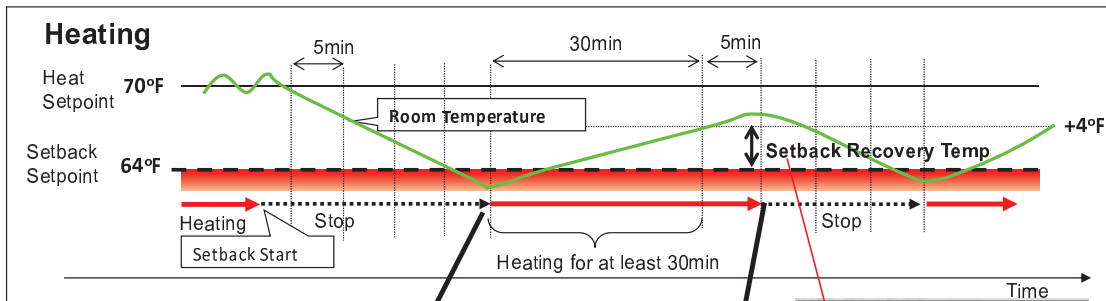
### Decision of stop

- Decision time is every 5 min after 30 min from the time cooling starts.
- Condition  
Room temperature  $\leq$  Setback Setpoint - Setback Recovery Temp



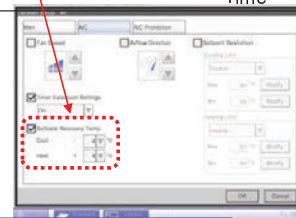
# Detail of Setback Control (Heating)

Setback controls as follows.



### Decision to start heating

- Decision time is every 5 min after stop
- Condition  
Room temperature  $\leq$  Setback Setpoint

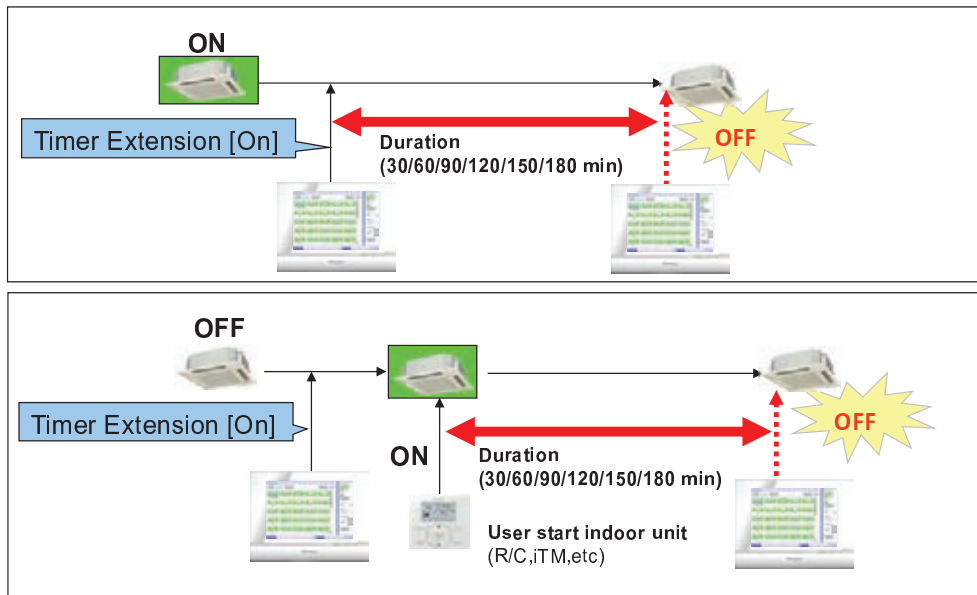


### Decision to stop indoor unit operation

- Decision time is every 5 min after 30 min from the time heating starts.
- Condition  
Room temperature  $\geq$  Setback Setpoint + Setback Recovery Temp

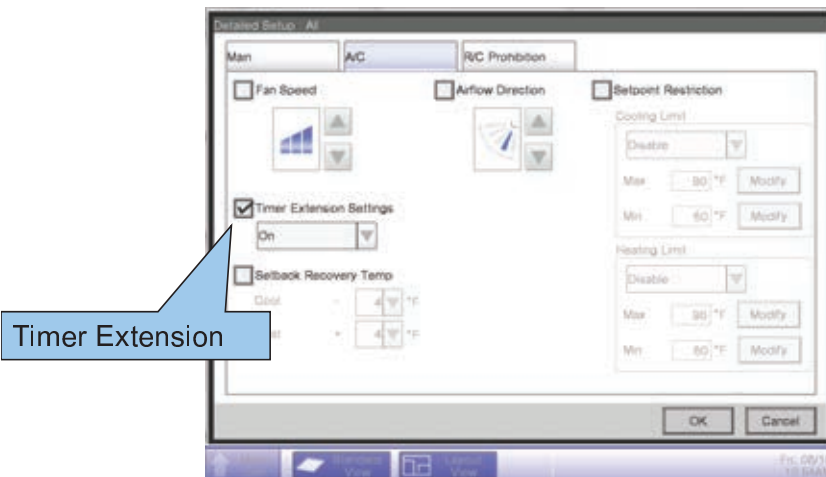
### 3. Timer Extension (Unoccupied Override)

Stop indoor units automatically after selected duration.  
Duration is selectable from 30, 60, 90, 120, 150, 180Min



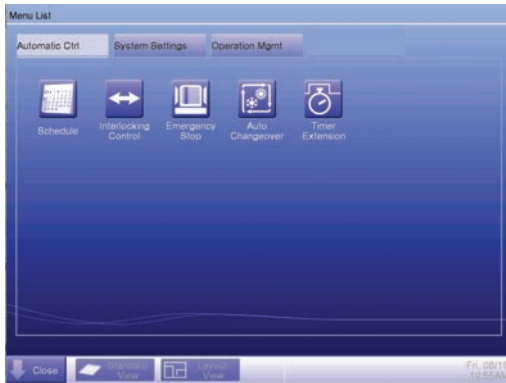
#### ***Timer Extension Must be Turned ON to Operate during the unoccupied period***

- Indoor unit should be turned off
- When schedule turns indoor units on timer extension (On setting) does not carry through to the occupied period
  - Timer extension must be turned On during the occupied period to operate

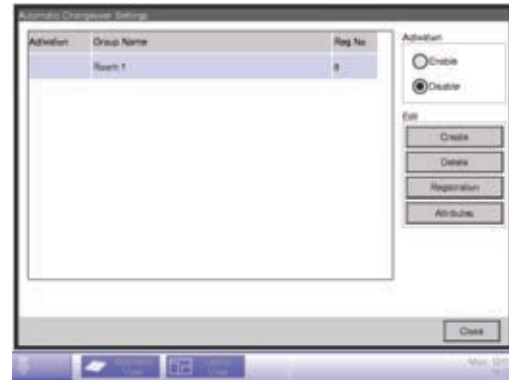




### 3. Auto changeover



Menu List



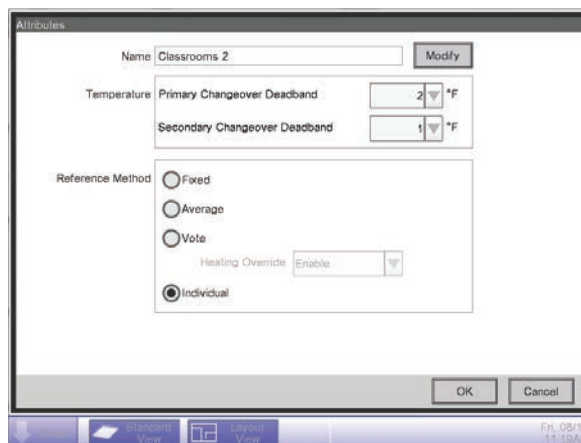
Automatic changeover

## iTC v2.0 – Auto-changeover



### Attributes

- The Attributes selection allows:
  - The user to set the Primary Changeover deadband (PCd) and the Secondary Changeover deadband (SCd) change over value
  - Select the Changeover method
    - This must be done before configuring the changeover groups.



- iTM can manage Auto-changeover of indoor units in the Changeover Group

Configuration Type	Changeover evaluated by	Changeover affects to	Good for	
			Heat Pump	Heat Recovery
Individual	Room temperature and setpoints of the individual indoor unit group in the Area	Individual indoor unit group in the changeover group		✓
Fixed	Room temperature and setpoints of the representative unit (first registered unit) in the Area	All indoor unit groups in the changeover group	✓	✓
Vote	Allows users to configure the system changeover based upon weighted priority (weighted demand configurable)		✓	✓
Averaging	Room temperature and setpoints of the average of all indoor unit groups in the Area (weighted demand configurable)		✓	✓

[Fixed method]

Group name	First Floor Office			
Indoor unit (Representative model = Indoor unit 1)	Indoor unit 1 (Changeover Master Unit)	Indoor unit 2	Indoor unit 3	Indoor unit 4
Primary Changeover Deadband	2°F (adjustable 1-4°F)			
Secondary Changeover Deadband	1°F (adjustable 1-4°F)			
Heat Orver Ride	—			
Reference Method	[Fixed]			

[Individual method]

Group name	Hotel Guest Rooms			
Indoor unit	Indoor unit 1 (Changeover Master Unit)	Indoor unit 2 (Changeover Master Unit)	Indoor unit 3 (Changeover Master Unit)	Indoor unit 4 (Changeover Master Unit)
Primary Changeover Deadband	2°F (adjustable 1-4°F)			
Secondary Changeover Deadband	1°F (adjustable 1-4°F)			
Heat Orver Ride	—			
Reference Method	[Individual]			

[Average method]

Group name	Common Areas			
Indoor unit	Indoor unit 1 (Changeover Master Unit)	Weight 3	Indoor unit 2	Weight 1
	Indoor unit 3	Weight 1	Indoor unit 4	Weight 1
Primary Changeover Deadband	2°F (adjustable 1-4°F)			
Secondary Changeover Deadband	1°F (adjustable 1-4°F)			
Heat Orver Ride	—			
Reference Method	[Average]			

[Vote method]

Group name	Second Floor Offices			
Indoor unit	Indoor unit 1 (Changeover Master Unit)	Weight 3	Indoor unit 2	Weight 1
	Indoor unit 3	Weight 1	Indoor unit 4	Weight 1
Primary Changeover Deadband	2°F (adjustable 1-4°F)			
Secondary Changeover Deadband	1°F (adjustable 1-4°F)			
Heating Override	Enable			
Reference Method	[Vote]			

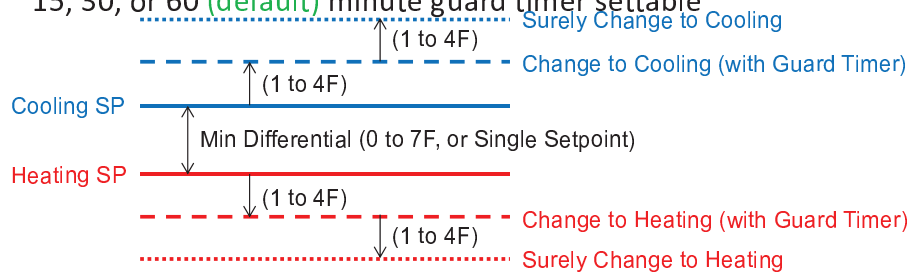


- Example settings for each changeover method
- A **weighted demand** can be assigned to each indoor unit group when the **Average** or **Vote** changeover methods are selected

# iTM v2.0 - Auto-changeover



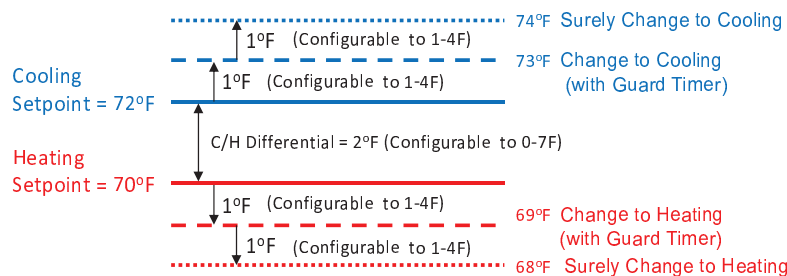
- Automatic changeover in Heat Pump and Heat Recovery Systems
  - Available for Changeover methods Individual, Fixed, and Averaging
  - At 1°F above cooling or 1°F below heating setpoint (default)
    - Configurable between 1°F – 4°F (improved)
  - Another 1°F above cooling or 1°F below heating changeover points immediate changeover ignoring guard timer (new)
    - Configurable between 1°F – 4°F (new)
  - Guard timer to prevent frequent mode change (improved)
    - 15, 30, or 60 (default) minute guard timer settable



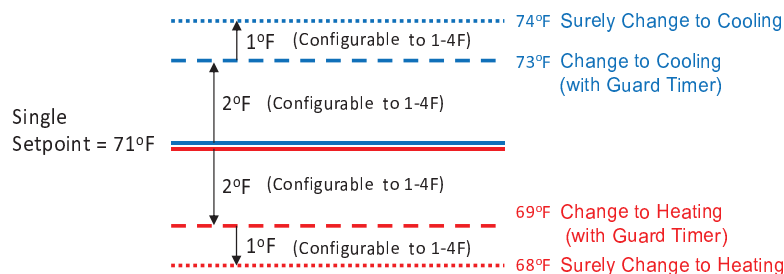
# iTM v2.0 - Auto-changeover



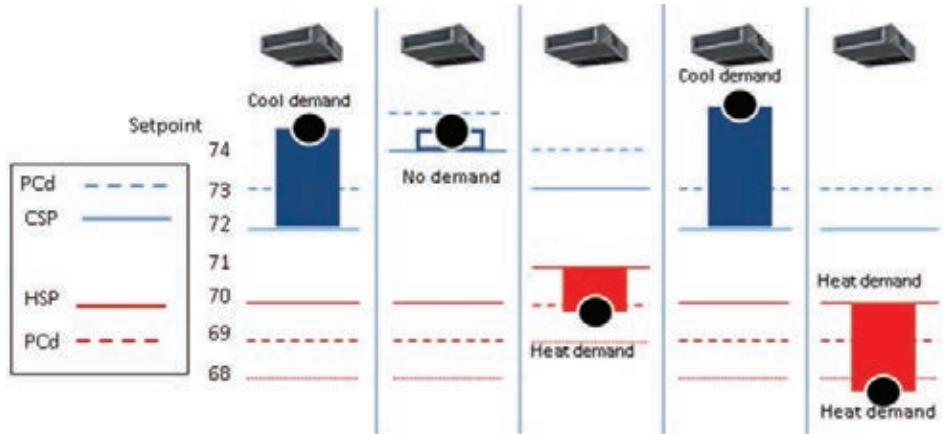
## Example #1 = Dual Setpoints



## Example #2 = Single Setpoint

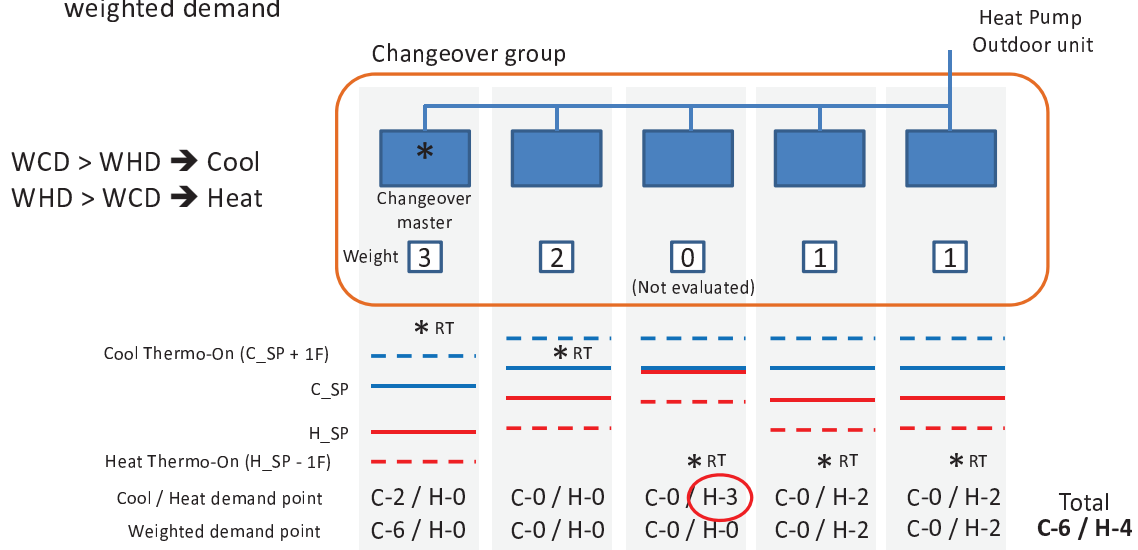


- The Vote method changes the operation mode comparing total cooling demand with total heating demand
  - The Vote Method allows users to configure the system changeover based upon weighted priority
  - Ideal for Heat Pump or under the BS unit in Heat Recovery systems where rooms may have varying loads
  - The setpoints can be different in each indoor unit within the changeover group. The demand is calculated based on the setpoints in comparison to room temperature for each indoor unit.
  - The demand within the Primary Changeover deadband (PCd) is considered as no demand.
  - Guard timer applies



## Weighted Demand

- A weight (0 to 3) can be configured for each indoor unit and is multiplied by the degree difference between the room temperature and setpoint to calculate the weighted demand



**Note:** Guard timer initiated after changeover to prevent frequent mode change (15, 30, 60 (default) min. )

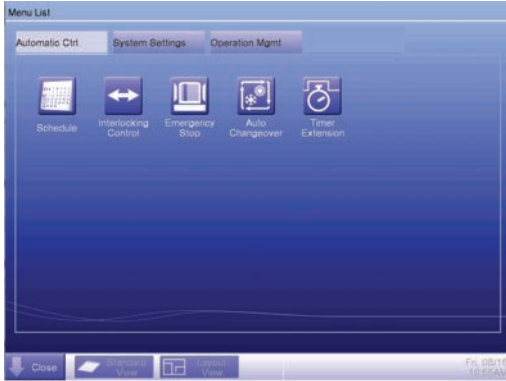
## Heat Override

- The Vote methods supports a Heat Override
  - Prioritizes switching to the heating mode if at least one room temperature falls below the secondary heat changeover point (heat setpoint minus the secondary changeover deadband) even if the total cooling demand is greater than the total heating demand

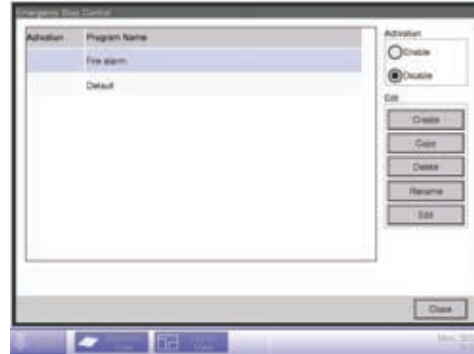
## Exercise 3

### Monitor/Operation/Scheduling

# 4. Emergency Stop



Menu List

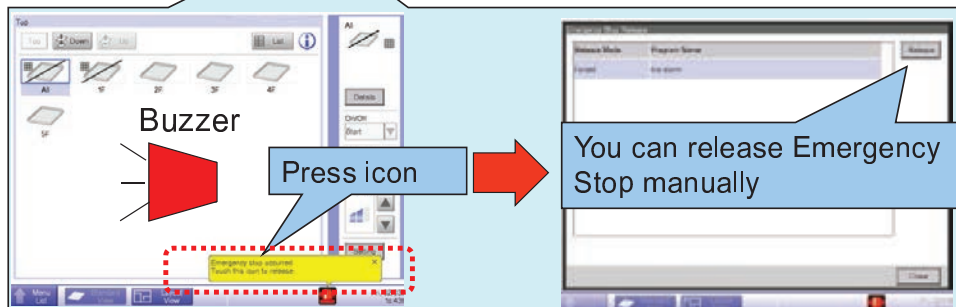
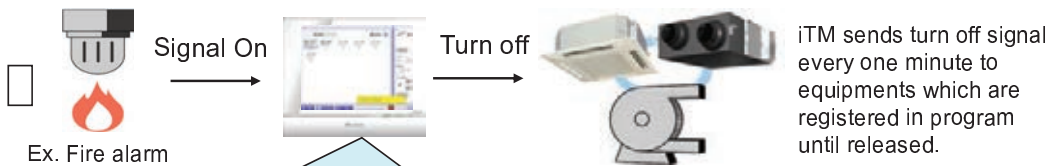


Emergency stop

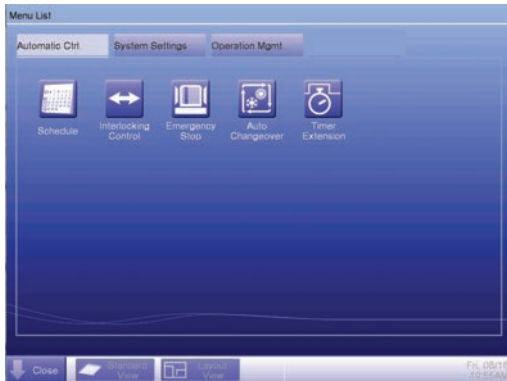
# Emergency Stop



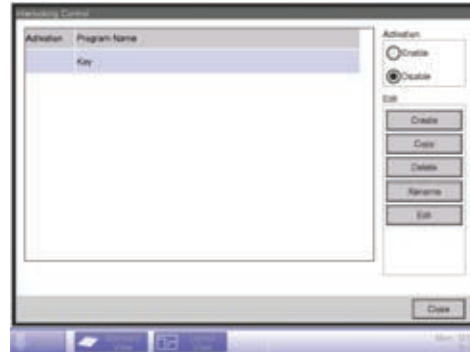
Up to 31 Emergency Stop Programs can be registered.  
When Emergency stop signal comes, iTM turns off equipment automatically according to your registered programs.  
You can know the occurrence of Emergency stop by Buzzer and icon.



# 5. Interlock



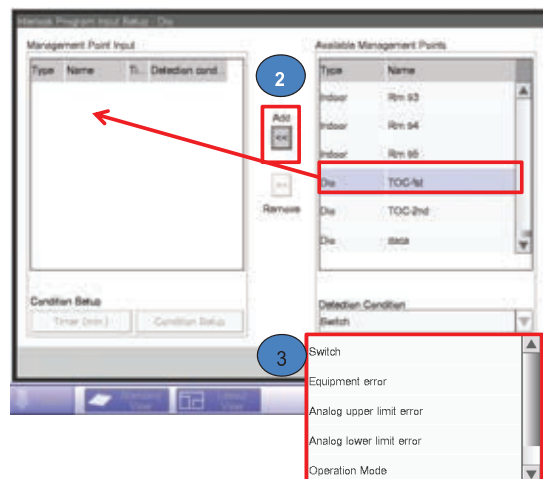
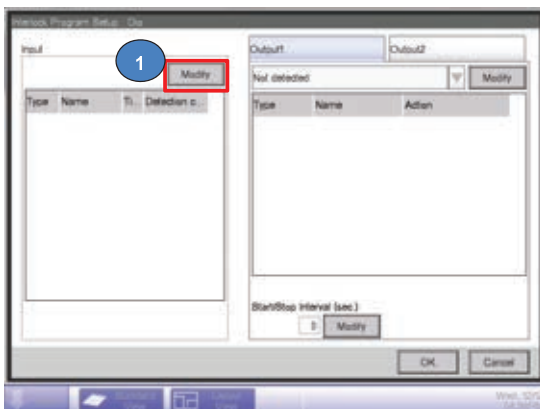
Menu List



Interlocking control



- First select the interlock trigger (indoor unit, DOAS, damper, occupancy sensor, etc) from the Available Management Points list and move it to the Management Point Input list using the Add button
- Select the Detection Condition for the interlock from the drop down list



Output 1 determines the first action of the interlock

Press the Modify button to select the target of the interlock

The Action Setup is used to configure the action to the target units

Move the selected interlock target to the Events list

Available Management Points/Area

Type	Name
Area	All
Area	Indoor
Area	Dis
Area	Analog
Area	1st Flr East
Area	...

Events

Type	Name	Action
Area	1st Flr East	Start, T...

Select the Input condition from the dropdown list

Repeat the setup process for Output 2 to reverse the interlock setting for the target unit

Interlock Program Setup - 1st Flr East TOR

Output

At least one input becomes valid

Not detected

All inputs become valid

At least one input becomes invalid

All inputs become invalid

Start/Step Interval (sec)

0

Modify

OK

Cancel

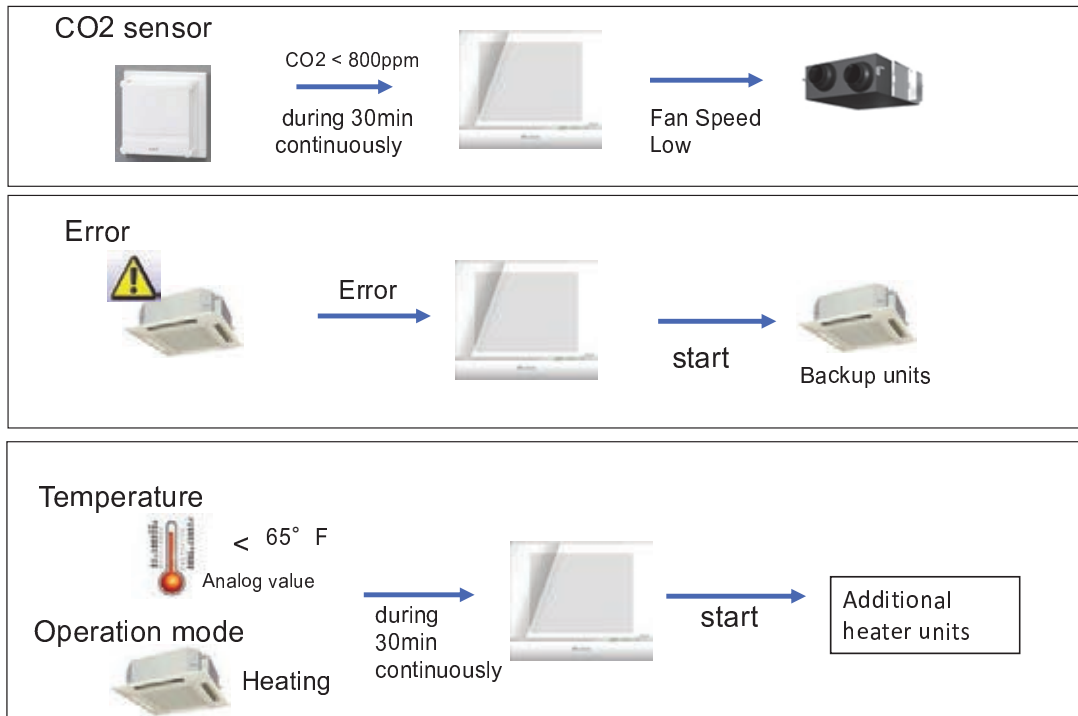
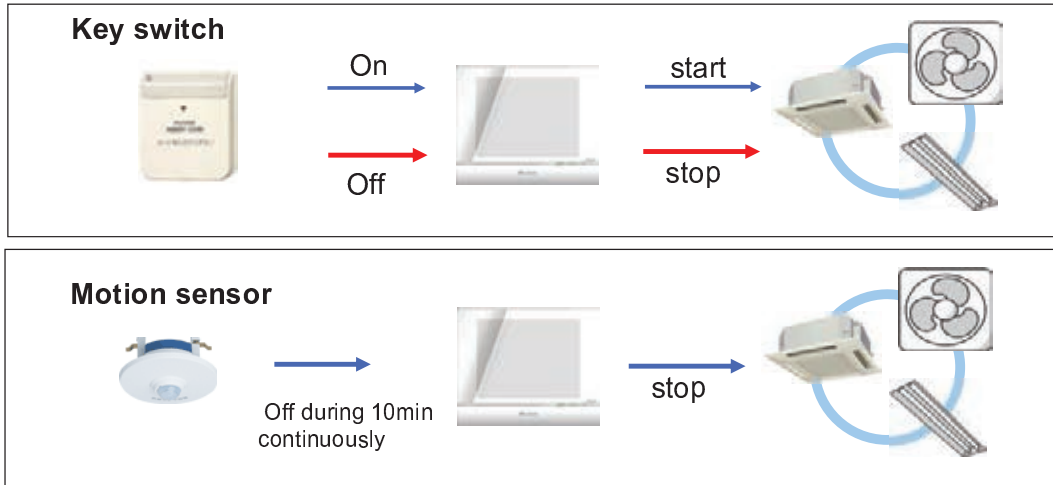


Up to 500 programs can be registered.

Not only Interlocking with Start/Stop status.

-Interlocking with analog value, error, operation mode is also available.

-The input timer can be used as trigger of interlocking control.



## Exercise 4

# Interlock Control



COMFORT FOR LIFE

*Thank You*



**DAIKIN**

COMFORT FOR LIFE

***iTouch Manager  
Installation and Commissioning Guide***

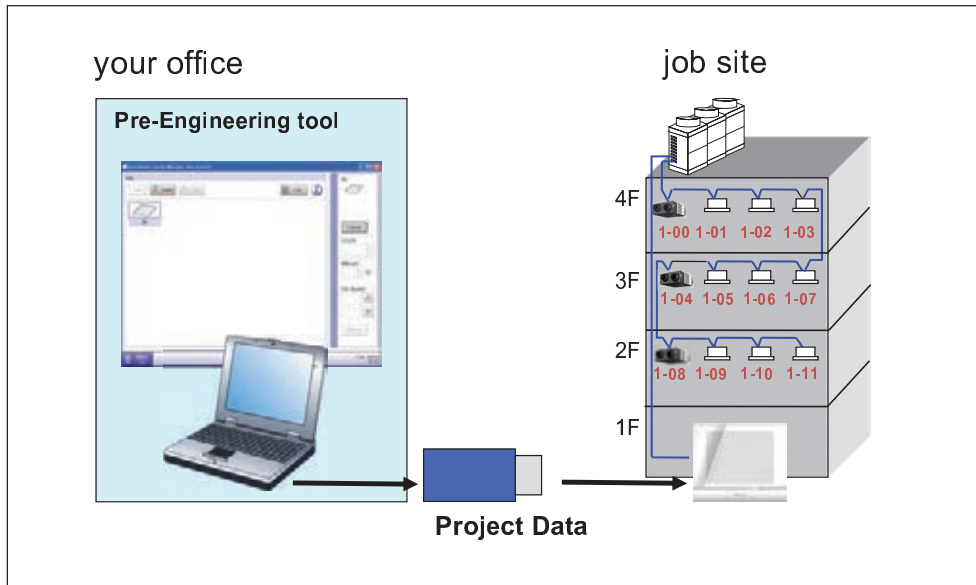
- 1. Introduction***
- 2. Installation***
- 3. Commissioning***
- 4. Control Functions***
- 5. Commissioning Options***
- 6. Auxiliary Device Control***

## **COMMISSIONING OPTIONS**

- 1. *Using Preset Tool***
- 2. *Web Access for commissioning***
- 3. *Editing .CSV File for Management Point***

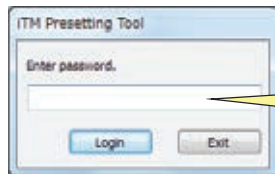
### **1. *Using Preset tool***

Pre-setting with **Pre-Engineering tool on PC at your office** .  
**You can lessen the work at job site, such as installing iTM in a large new project.**



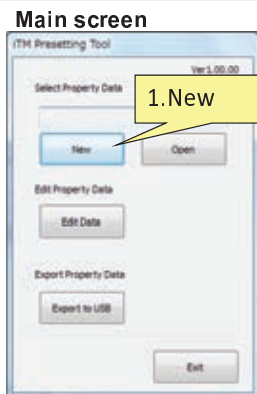
## Preset Tool on PC at Office

1. Start iTM Pre-Engineering tool



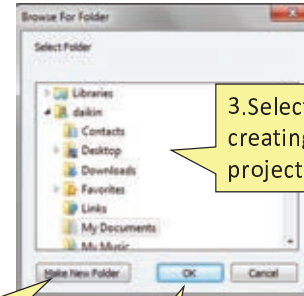
Enter the password (daikinus) and Login.

2. Create new Project Data



1. New

Create New Folder dialog



3. Select Folder for creating new project data

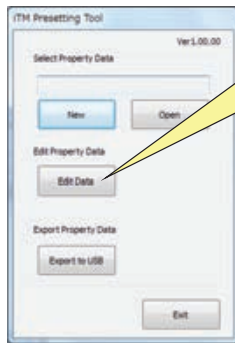
2. Make New Folder

4. OK

3. Open iTM preview screen to edit Project Data

iTM preview screen allows you to make similar settings as with iTM unit.

Main screen



Click Edit Data button to start up iTM preview screen.

iTM preview screen



Menu List

Menu List(Service Setting)



Menu List(System Setting)



4. Locale(System Setting)

5. Time zone(Service Setting)

6. Time/DST (System Setting)

Set DST, but Date/Time is not included in Project Data.

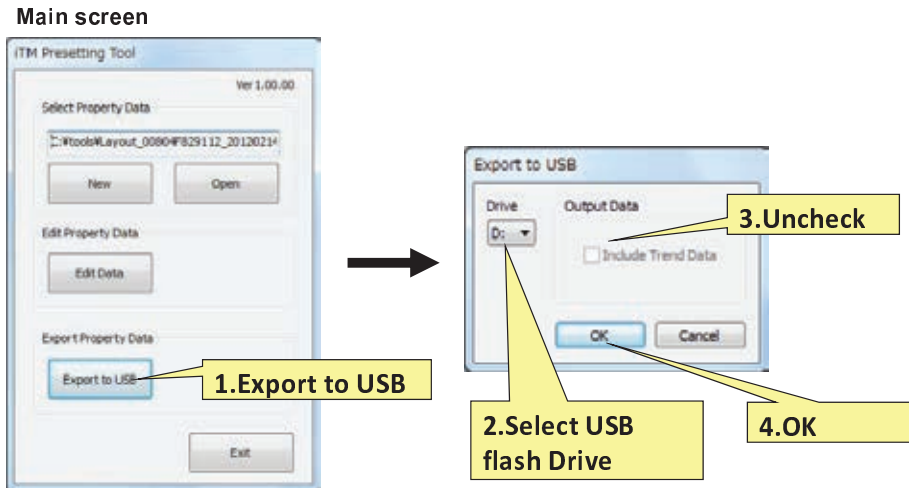
7. Contact Information(Service Setting)

8. Management point (Service Setting)

if auto registration was done at job site and you got a CSV file from iTM, (explained in section 3, "Editing .CSV File for Management Point ") you can lessen the work to register management points.

9. Area (System Setting)

## 10. Save Project Data to USB flash drive

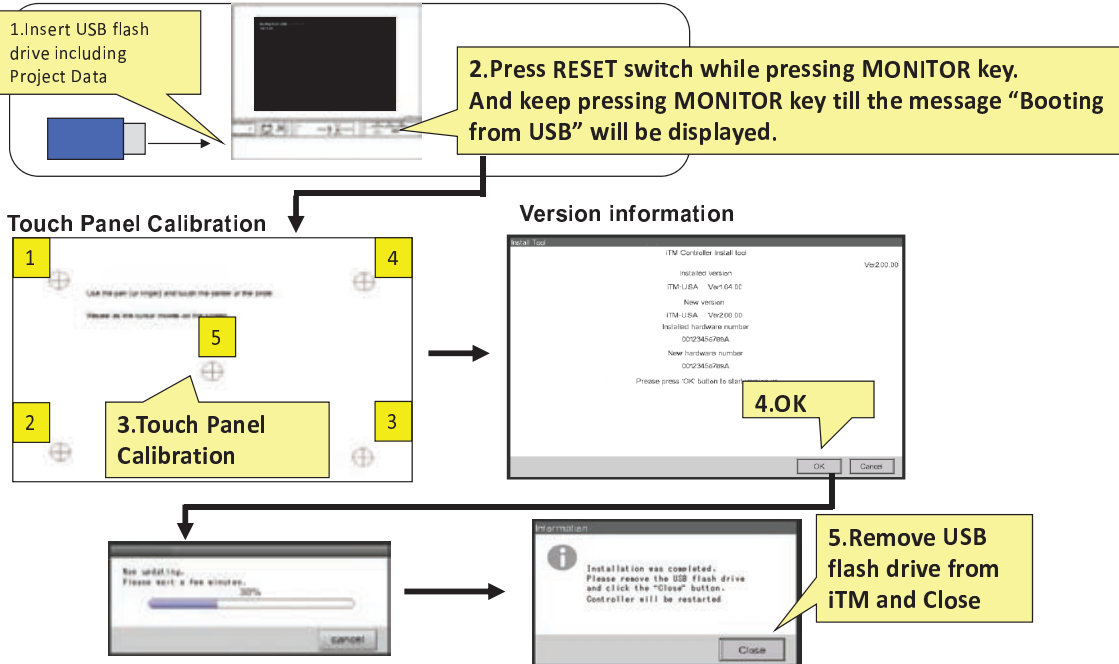


## Setup at job site (Load Project Data)

1-6 are same procedure as Basic commissioning

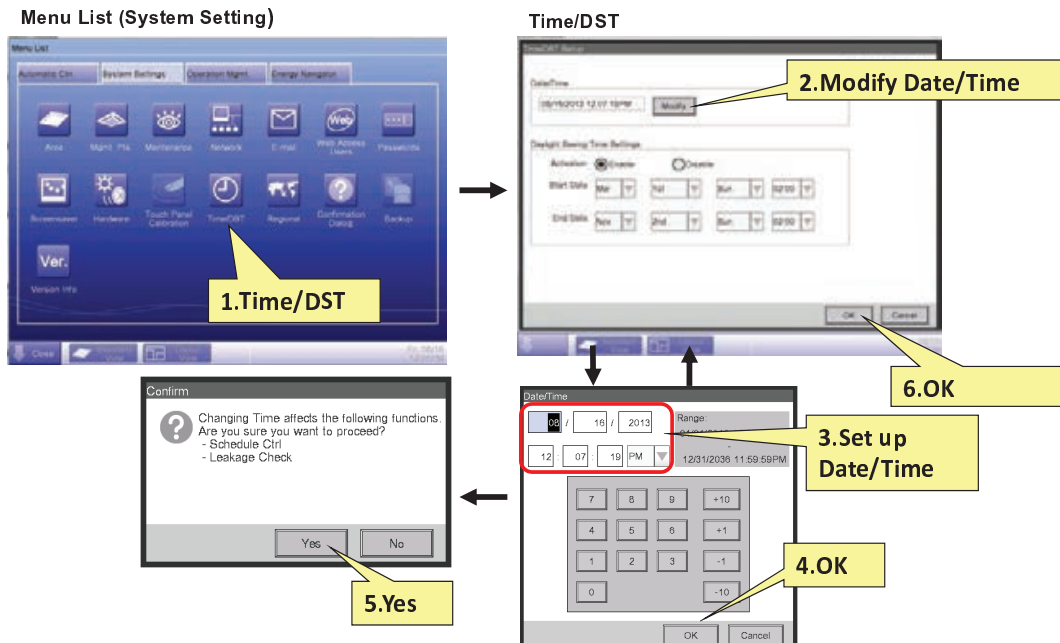
1. [iTM] Set Master/Slave
2. [iTM] Backup battery switch ON
3. D III -NET wiring
4. [iTM] Power ON
5. Touch panel calibration
6. Assign D III -Address with Remote Controller

## 7. Load Project Data to iTM



## 8. Date/Time(System Setting)

Select Menu List on Top screen that appears after Loading Project Data and Restarting iTM.





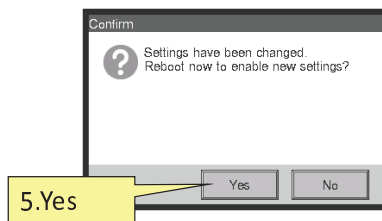
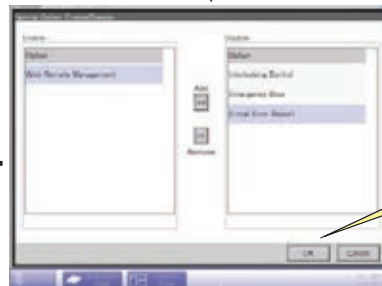
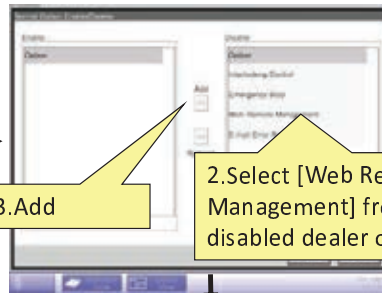
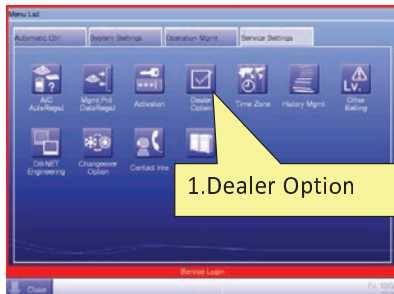
## 2. Web Access for commissioning

### Web access user Settings

for login from Web Browser

#### 1. Register Web access function as available option

Menu List (Service Setting)



## 2. Register the login user(General users, Administrators)

Menu List(System Setting)

Web Access Users

Create

User Setup  
(see next page)

## Web Manager/Admin

- For web access
  - There is no default Admin user name and password for web access
  - User name and password must be set up for Manager/Admin
    - Up to 4 Manager/Admin users can be set up
    - All 4 Managers/Admin users can use the web access at the same time
  - Up to 60 general users can be set up
    - Only 16 users can have web access at the same time

Name	Type
admin a	Manager
admin b	Manager
tenant1	User

User Name: Admin  
Password: \*\*\*\*\*  
Type:  Manager  User  
Managed Area: \_\_\_\_\_  
Screen Management:  Screens

**User Setup**

User Name: New User00 [Modify]  
Password: [Modify]  
Type:  Manager  User  
Managed Area: [Modify]  
Screen Management: 0 Screens [Modify]

**Setting for General User**

**Managed Area**

Select Area to permit General user to access in Standard view  
(Only Level 1 Areas are displayed in this list except [All] Areas which are created automatically by iTM)

**Screen Management**

Add Layout screen to permit General user to access in Layout view.  
(Only one screen can be registered)

**<User Type>**  
If you select [Manager], this user is registered as Administrator. Administrator can access all Areas and Layout screens.  
If you select [User], this user is registered as General User. General User can access only Managed Areas and Managed screens you set.

## Exercise 5

# General User Setup



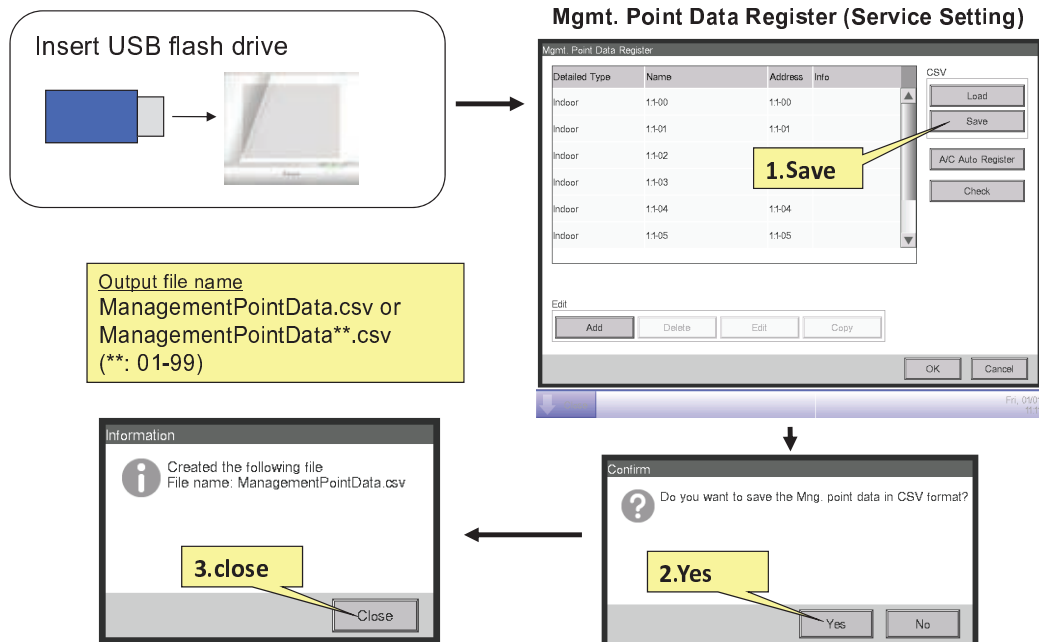
***From the Laptop/PC Follow the same procedure as in Basic Commissioning***

### ***3. Editing .CSV File for Management Point***

The 1-11 are same procedure as Basic commissioning

- 1.[iTM] Set Master/Slave
- 2.[iTM] Backup battery switch ON
- 3.D3-NET wiring
- 4.[iTM] Power ON
- 5.Touch panel calibration
6. Assign DIII-Address with Remote Controller
7. Locale(System Setting)
8. Time zone(Service Setting)
9. Time/DST(System Setting)
- 10.A/C (Indoor unit) Auto Register
11. Contact Information(Service Setting)

## 12. Output CSV file with management point data



### 13. Edit CSV file and create Management point data



CSV File

Port No, D3Address, Icon were already set by A/C (indoor unit) Auto Register.

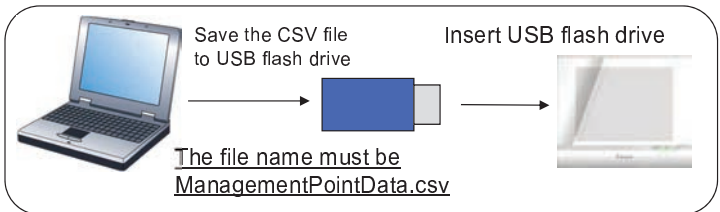
Mng. point CSV-file iTM Ver.1	AVAILABLE POIN	123									
IN-H	POINTID	NAME	DETAILEDINFO	PROHIBITOP	PORTNO	ADDRESS1	ADDRESS2	ICON	ANADDR	COMMONLV	
IN-D	115	Indoor01		0	1	1	0	100	1	1	
IN-D	116	Indoor02		0	1	1	1	100	1	1	
IN-D	117	Indoor03		0	1	1	2	100	1	1	
OUT-H	POINTID	NAME	DETAILEDINFO	PORTNO	ADDRESS1	ICON					
HRV-H	POINTID	NAME	DETAILEDINFO	PROHIBITOP	PORTNO	ADDRESS1	ADDRESS2	ICON	COMMONLV	VMODE	

**Do NOT change Management point ID**

**Management Name**

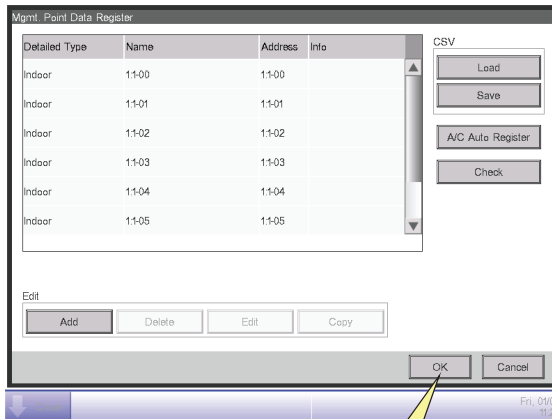
- Management point name must be unique in all management points
- Max 12 Characters

### 14. Load edited CSV file



#### Mgmt. Point Data Register (Service Setting)

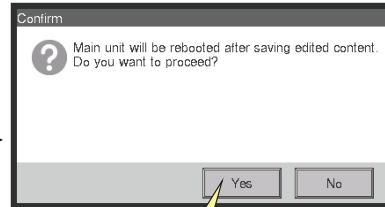
3. After checking the list on each tab (Add, Modify, Modification Failed, No change), Close to return to Mgmt. Point Data Register screen.



4.OK



### Confirmation Dialog for Restart



5.Yes

## 15. Area(System Setting)

See iTM user's manual about Area Setup



*Thank You*



**DAIKIN**

COMFORT FOR LIFE

***iTouch Manager  
Installation and Commissioning Guide***

- 1. Introduction***
- 2. Installation***
- 3. Commissioning***
- 4. Control Functions***
- 5. Commissioning Options***
- 6. Auxiliary Device Control***



# Monitor/Control via I/O Units

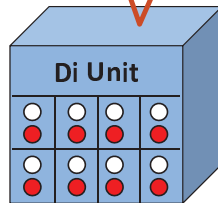


## Digital Input (DEC101A51-US2)

## Digital Input/Output unit (DEC102A51-US2)

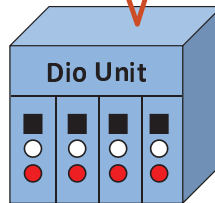
- Equipment is controlled like an indoor unit
  - On / Off based monitoring / controlling
  - One DIII-Net address is consumed for each set for third party equipment

DIII-Net line



8 sets of  
○ Status input  
● Alarm input

For  
• On/Off Status from any equipment



4 sets of  
■ Output  
○ Status input  
● Alarm input

For  
• Fan  
• Damper  
• Light  
• AHU etc

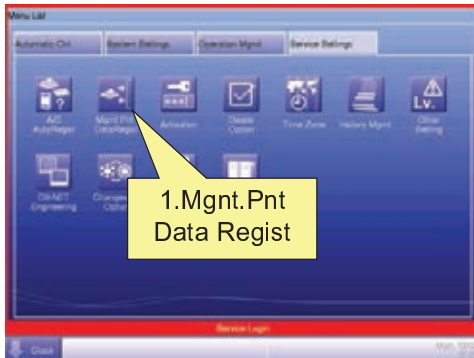


Di or Dio Unit

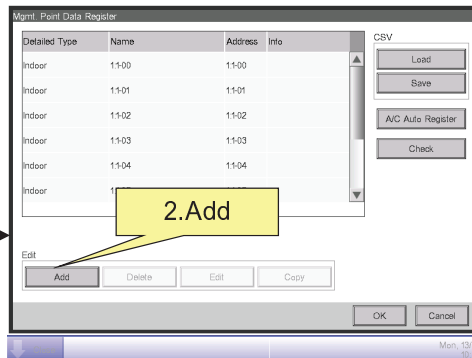
# Di/Dio Management Point Registration



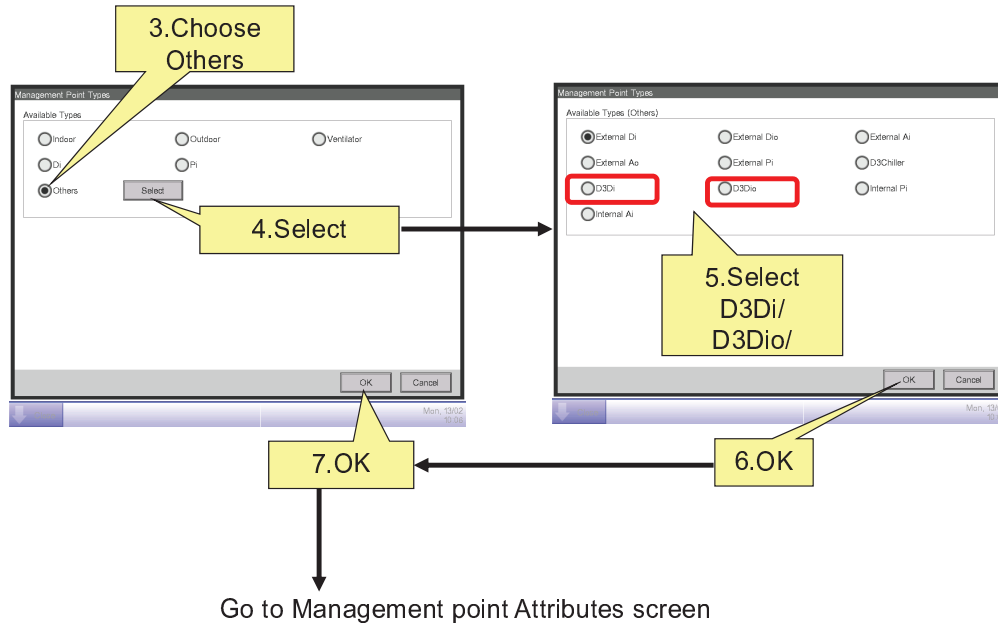
Menu List(Service Setting)



Mgmt. Point Data Register



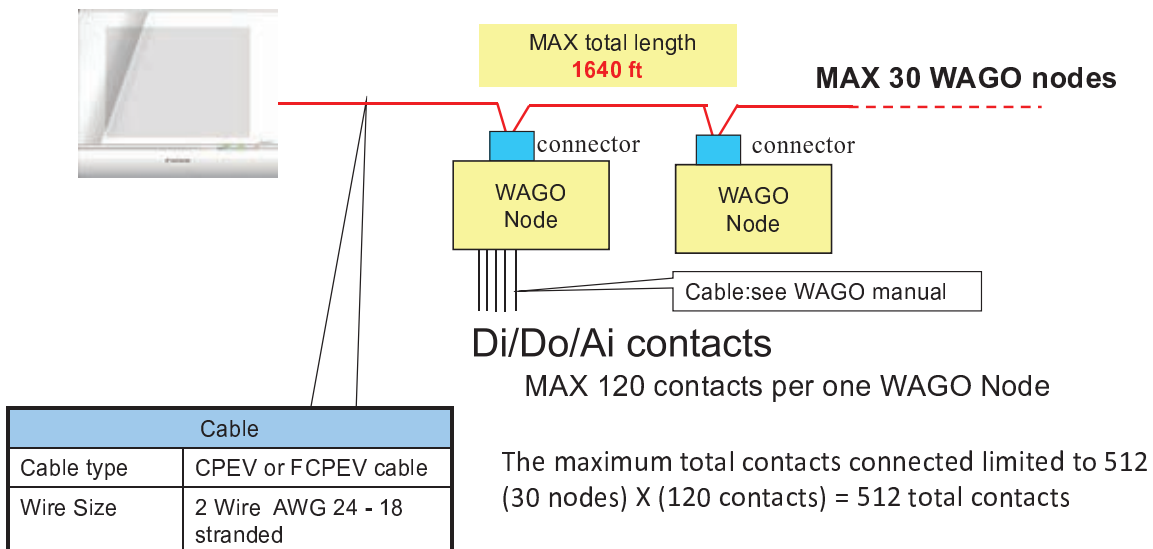
# Di/Dio Management Point Registration



## iTM & WAGO



- The WAGO module provides Di, Do, and Ai capabilities for connecting non-Daikin equipment into the DIII-NET system



# WAGO Specifications



24 VDC  
Power Supply  
Unit



Connector



Bus Coupler



Di, Do, Ai, Ao,  
End Modules

	Item	Note	Model
Required	Daikin iTM Basic Kit	Power Supply Unit 24 VDC, Connector Module, Bus Coupler, End Module	TBD
Di	2 Channel Di Module		TBD
	4 Channel Di Module		TBD
Do	2 Channel Do Module		TBD
Ai	2 Channel Ai Module	4-20 mA, ±10 VDC, 20k Thermistor	TBD
Ao	2 Channel Ao Module	4-20 mA, 0-10 VDC	TBD

# WAGO Overview

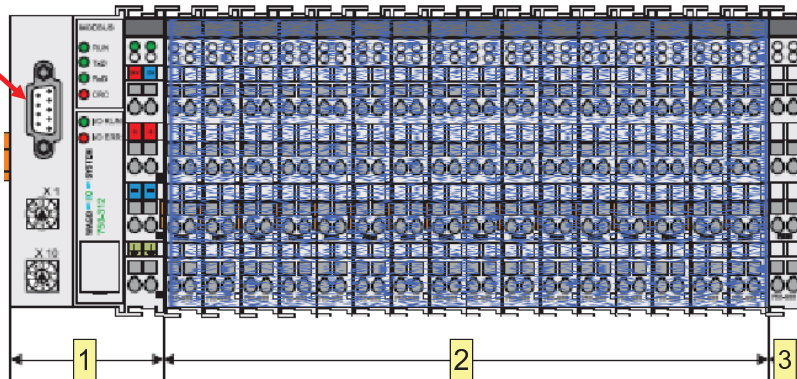


- The WAGO consists of a power supply, BUS coupler, I/O modules, and an end module

Connector(Model:750-960)



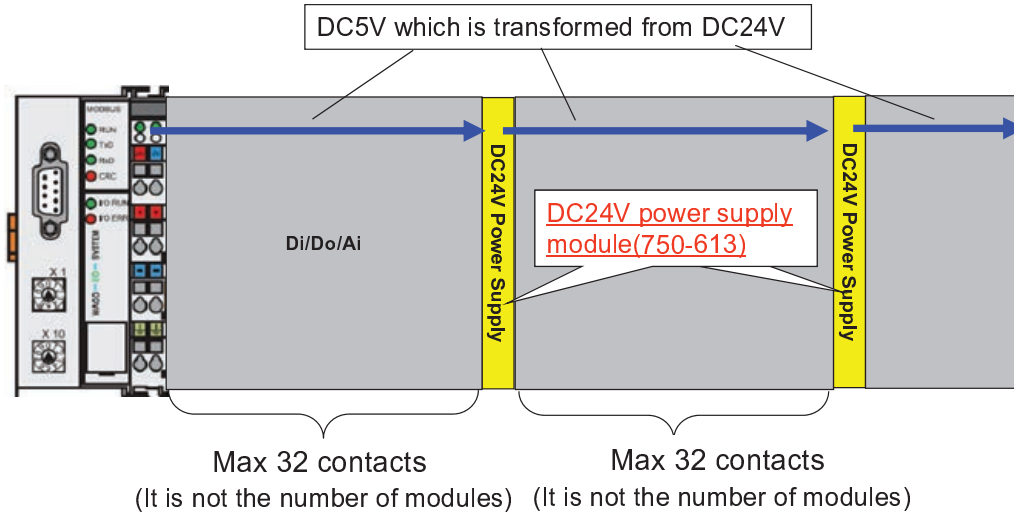
Power Supply Unit  
(Model:787-712)



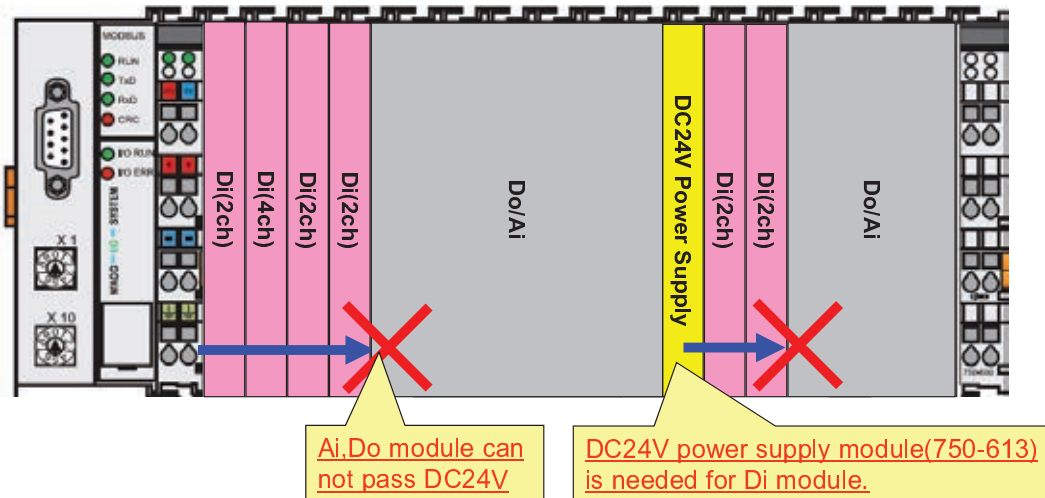
- BUS Coupler  
(Model:750-315/000-002/K190-6442)
- I/O modules(Di,Do,Ai module)  
**Up to 120 contacts**  
(It is not the number of modules)
- End module  
(Model:750-600)

## DC24V Power Supply module (750-613)

- BUS Coupler needs DC24V from DC24V Power Supply unit (787-712).
- BUS Coupler can supply DC5V up to 32 contacts.
- DC24V Power Supply module(750-613) must be inserted at every 32 contacts.



- Di module needs DC24V.but Ai, Do module can not pass DC24V to next module.
- The DC24V power supply module(750-613) must be inserted, if the Di module is located at the next to Ai, Do module.



# WAGO I/O Module Management Point



- Project requirements will dictate which I/O modules will be required

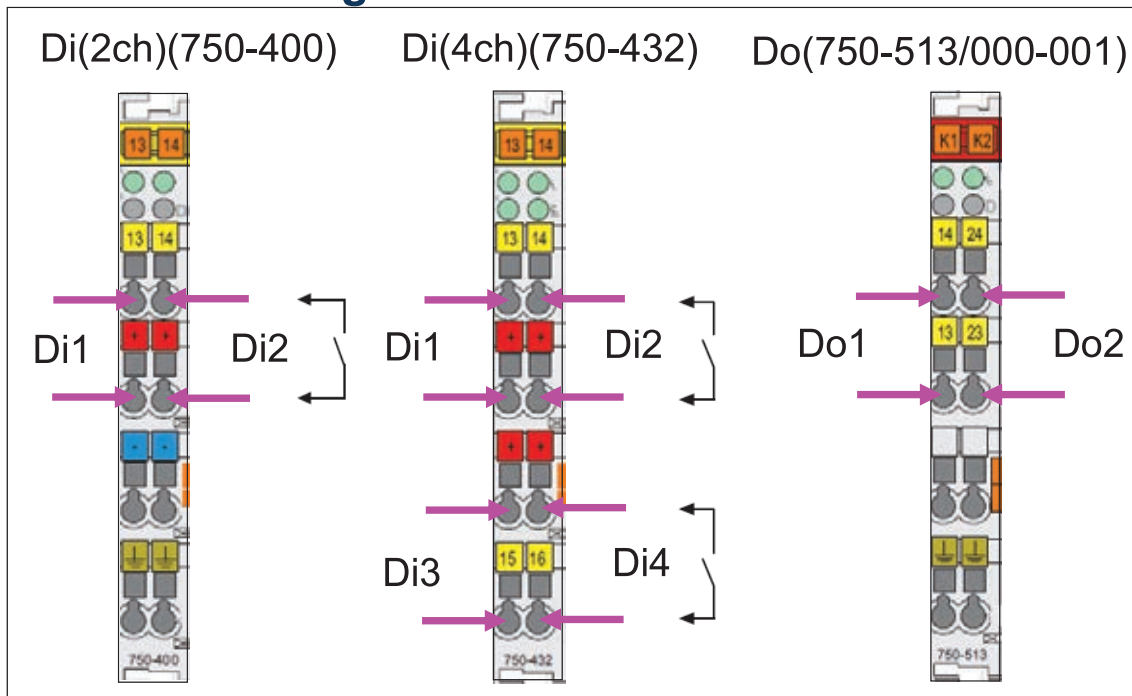
Management point type	Purpose	Required I/O module and the number of contacts			
		Di	Do	Ai	Ao
External Di	On/Off monitor	1 contact			
	Error monitor	1 contact(*)			
External Dio (output: constant contact)	On/Off monitor	1 contact(*)			
	Error monitor	1 contact(*)			
	On/Off operation(output)		1 contact		
External Dio (output: instantaneous contact)	On/Off monitor	1 contact(*)			
	Error monitor	1 contact(*)			
	On operation(output)		1 contact		
	Off operation(output)		1 contact		
External Ai	Analog monitor			1 contact	
External Ao	Analog operation				1 contact

(\*) : If the monitoring is not needed, these contacts are not required.

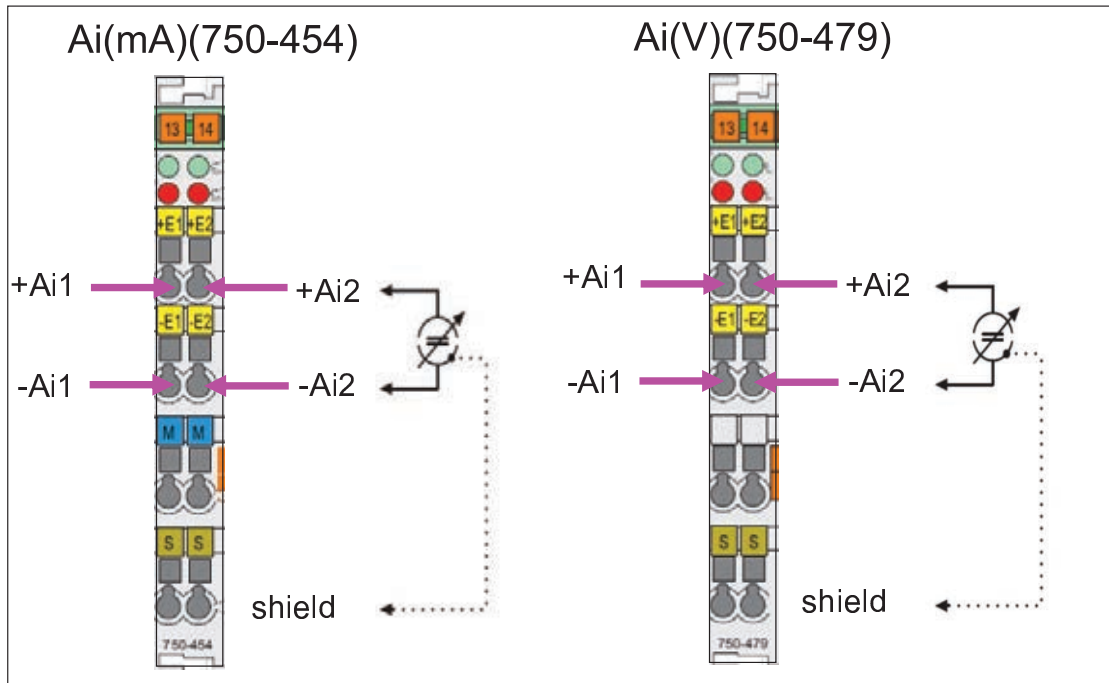
# WAGO I/O Module



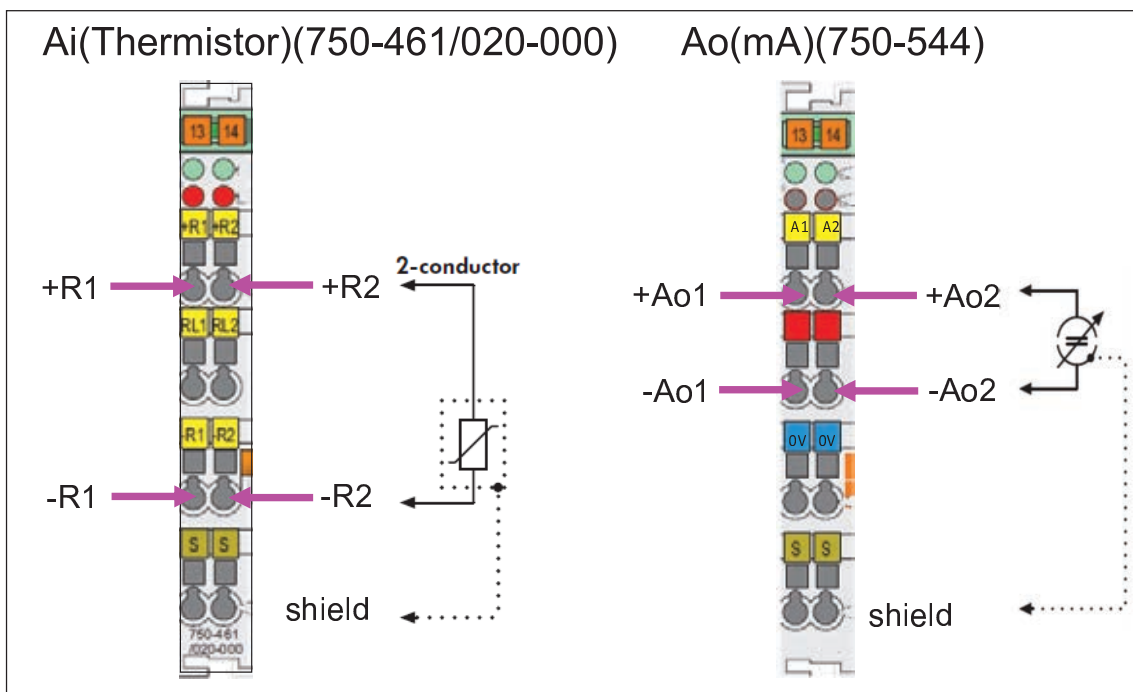
## Wiring I/O module and contacts



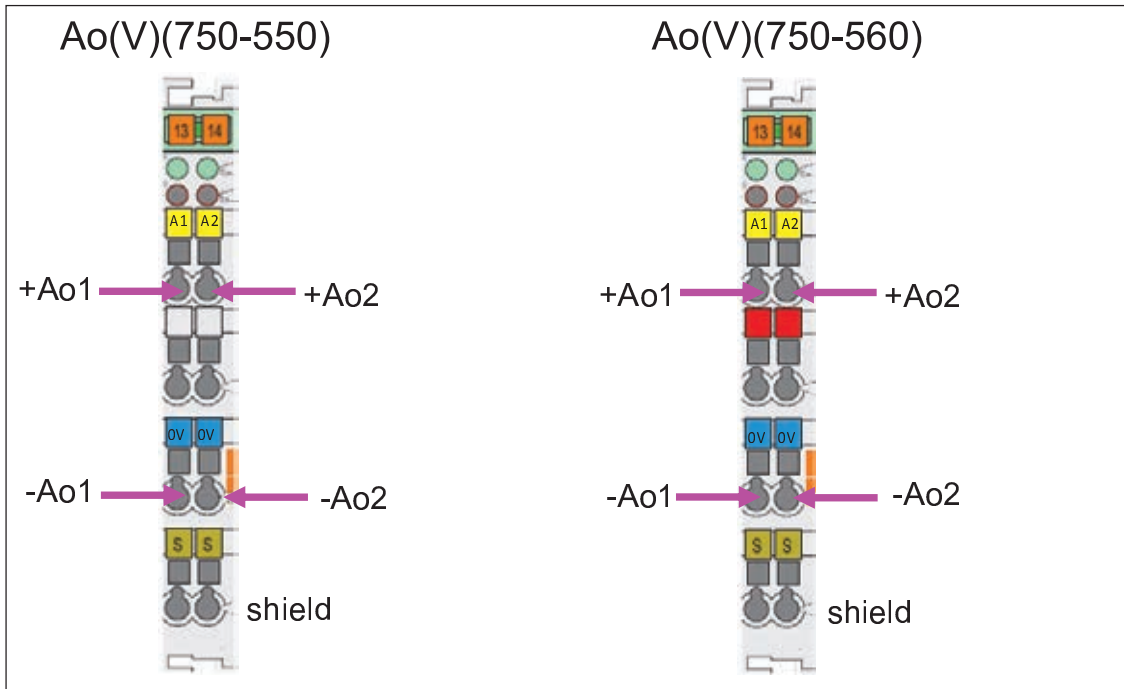
# WAGO I/O Module



# WAGO I/O Module



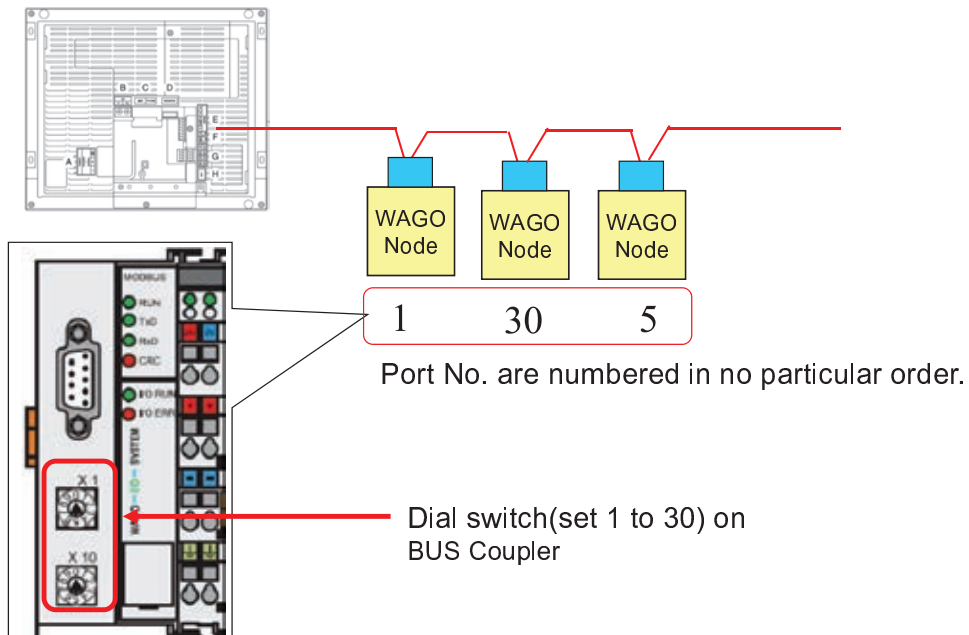
# WAGO I/O Module



# WAGO Node Port Number



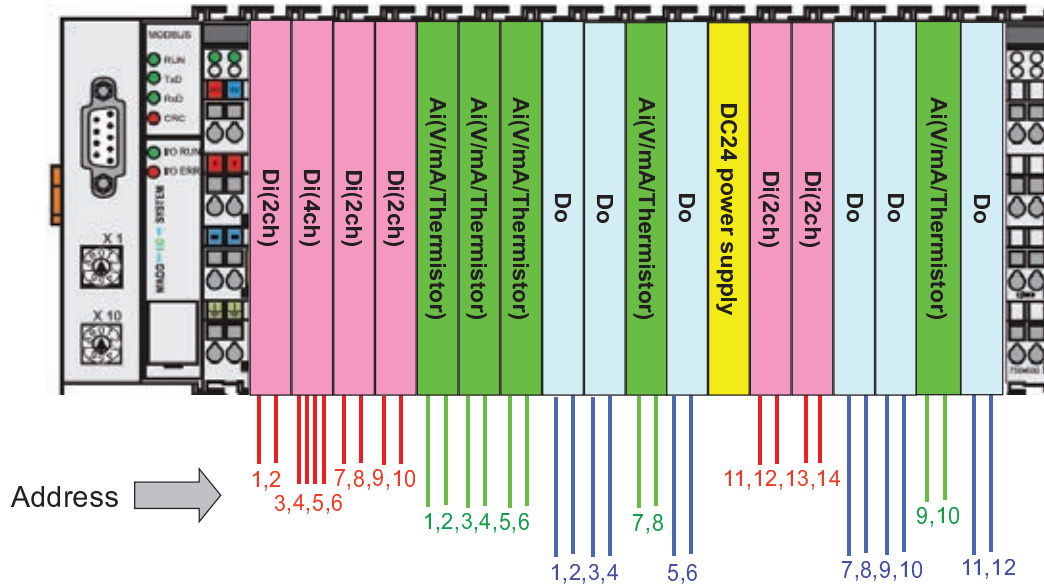
- The Port number must be 1 to 30 and unique at every WAGO Node.



# WAGO I/O Module Addressing



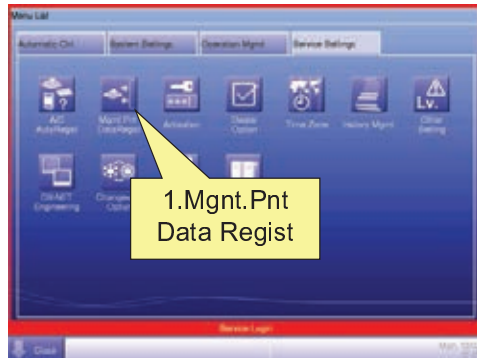
- Address is decided by location of I/O module.
- Address is counted by module type.



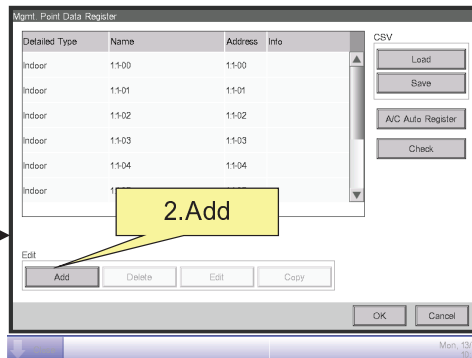
# WAGO Management Point Registration



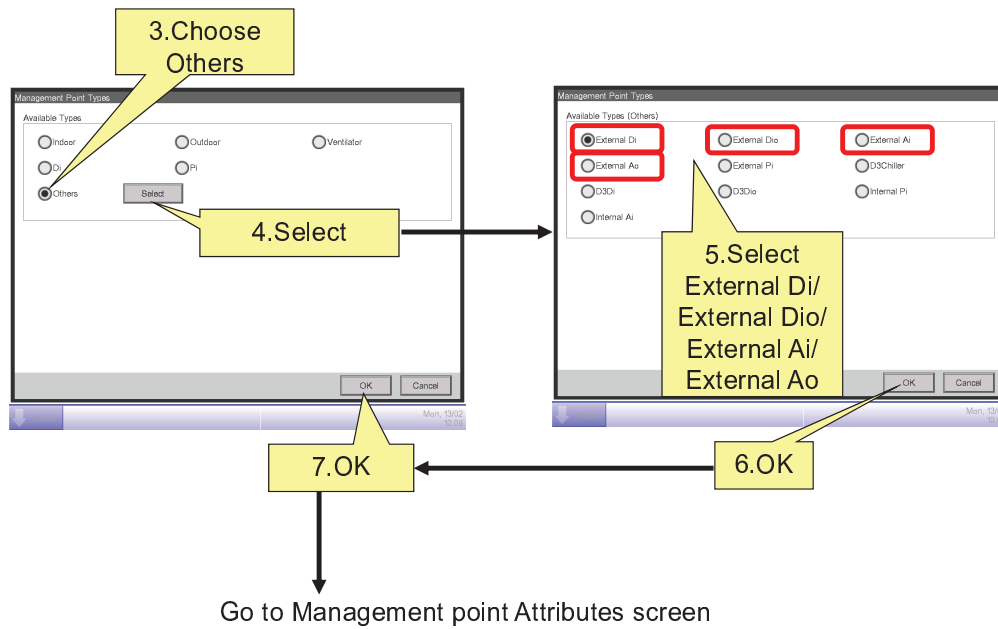
Menu List(Service Setting)



Mgmt. Point Data Register







*Thank You*