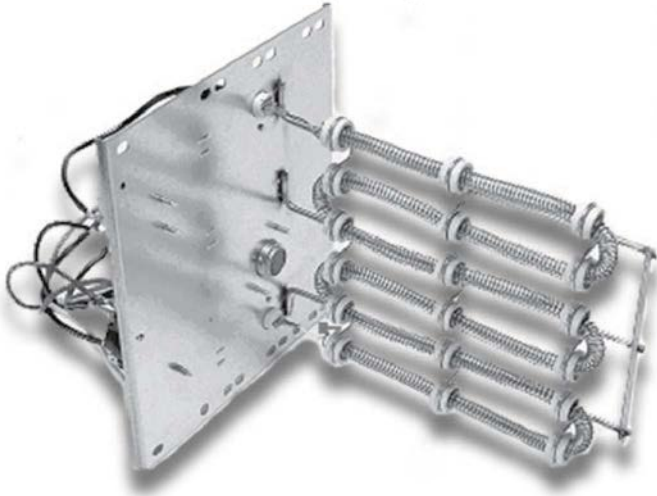




HKR / HKA / HKP / HKS

ELECTRIC HEAT KITS FOR AIR HANDLERS AND PACKAGED ELECTRIC UNITS



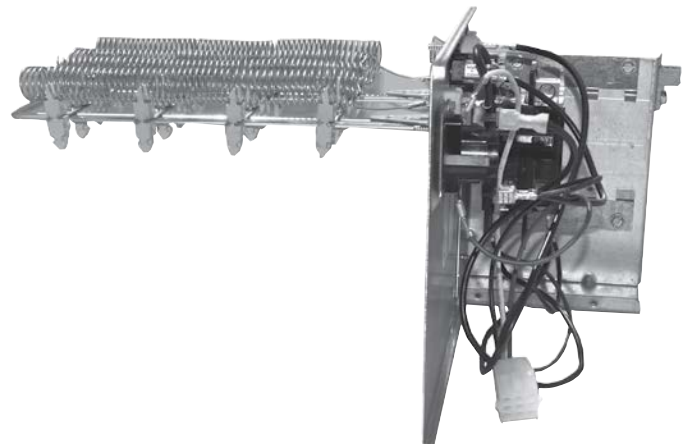
The Daikin brand HKR electric heat kits are for use with Daikin brand air handlers and modular blowers. The HKS heat kits are designed for use with packaged electric/heat pump units. These versatile heat kits are designed for easy installation in the field.

Contents

DVPVC.....	3
DVPTC.....	4
ASPT.....	6
ASUF.....	8
ARPT.....	9
ARUF.....	11
MBVC.....	13
MBR.....	14
DP13CM.....	15
DP14CH.....	16
DP13CH.....	17
DP15HH.....	18
DP14HH.....	19
DP13HM.....	20
DP13HH.....	21

Standard Features

- Sequencers for better temperature control
- Multiple branch circuit capability
- Completely assembled and tested
- Control circuitry arranged to readily permit staging
- Factory-installed circuit breakers available on specific models (See Electrical Data)
- Fuse link secondary high-temperature limit control
- Plug-in wiring harness for ease of installation into air handler
- Rust-resistant nickel chromium heat elements
- ETL Listed



* Complete warranty details available from your local dealer or at www.daikincomfort.com.

NOMENCLATURE

		HKR	*	-05	*	A			
		1	2	3	4,5	11			
Unit Type							Revisions		
HKR	Air Handlers & Packaged Units					Engineering Revisions			
HKA	Air Handlers								
HKP	Packaged Units								
Phase							Circuit Breaker		
None	Single-Phase					None	Single- or 3-Phase Kit; No Circuit Breaker		
3	Three-Phase					C	Single-Phase Kit w/ Circuit Breaker		
Heating Capacity @ 240 Volts									
5	4.75 kW	15	14.25 to 15.00 kW						
8	7.00 kW	20	19.00 to 19.60 kW						
10	9.50 kW								

		HKS	X	03	X	A	AA			
		1	2	3	4	5	6,7			
Unit Type							Revisions			
HKS	Heat Kit for Air Handlers					Engineering Revisions				
Phase							Phase			
X	No circuit breaker					A Single Phase 208 V				
C	Circuit Breaker					B Single Phase 240 V				
Heating Capacity @ 240 Volts							C Single Phase 208/240 V			
03	3.0 kW							D Three Phase 208 V		
05	4.5 kW							E Three Phase 240 V		
06	6.0 kW							F Three Phase 208/240 V		
08	8.0 kW							G Three Phase 460 V		
10	9.6 kW							Cabinet Size (MAX)		
15	14.4 kW							C C Cabinet		
19	19.2 k@ wth 150F limit							D D Cabinet		
20	19.2 kW with 170F limit							X All Cabinet Sizes		
25	25.0 kW									

HEATING kW CORRECTION FACTOR

SUPPLY VOLTAGE	240	230	220	210	208
CORRECTION FACTOR	1.00	0.92	0.84	0.77	0.75

Multiply the 240-volt heating capacity by correction factors.



AIR HANDLER ELECTRICAL DATA — DVPVC

MODEL & HEAT KIT USAGE	CIRCUIT 1			CIRCUIT 2			SINGLE-POINT KIT	
	Amps	MCA ¹	MOP ²	Amps	MCA ¹	MOP ²	MCA ¹	MOP ²
DV24PVCC14A*	0.0/0.0	4.9/4.9	15/15	---	---	---	---	---
HKS*03XC*	10.8/12.5	18/21	20/25	---	---	---	---	---
HKS*05XC*	17.3/20.0	27/30	30/30	---	---	---	---	---
HKS*06XC*	21.7/25.0	32/36	35/40	---	---	---	---	---
HKS*08XC*	28.9/33.3	41/47	45/50	---	---	---	---	---
HKS*10XC*	34.7/40.0	48/55	50/60	---	---	---	---	---
HKSC15*##	34.7/40.0	48/55	50/60	17.3/20.0	22/25	25/25	70/80	70/80
DV36PVCD14A*	0.0/0.0	6.5/6.5	15/15	---	---	---	---	---
HKS*03XC*	10.8/12.5	20/22	20/25	---	---	---	---	---
HKS*05XC*	17.3/20.0	28/32	30/35	---	---	---	---	---
HKS*06XC*	21.7/25.0	34/38	35/40	---	---	---	---	---
HKS*08XC*	28.9/33.3	43/48	45/50	---	---	---	---	---
HKS*10XC*	34.7/40.0	50/57	50/60	---	---	---	---	---
HKSC15*##	34.7/40.0	50/57	50/60	17.3/20.0	22/25	25/25	72/82	80/90
HKSC20D##	34.7/40.0	50/57	50/60	34.7/40	43/50	45/50	93/107	100/110
HKSC15XF*	0.0/0.0	6.5/6.5	15/15	30.0/34.6	38/43	40/45	---	---
HKSC20XF*	0.0/0.0	6.5/6.5	15/15	37.5/43.3	47/54	50/60	---	---
DV48PVCD14A*	0.0/0.0	6.5/6.5	15/15	---	---	---	---	---
HKS*03XC*	10.8/12.5	20/22	20/25	---	---	---	---	---
HKS*05XC*	17.3/20.0	28/32	30/35	---	---	---	---	---
HKS*06XC*	21.7/25.0	34/38	35/40	---	---	---	---	---
HKS*08XC*	28.9/33.3	43/48	45/50	---	---	---	---	---
HKS*10XC*	34.7/40.0	50/57	50/60	---	---	---	---	---
HKSC15*##	34.7/40.0	50/57	50/60	17.3/20.0	22/25	25/25	72/82	80/90
HKSC20D##	34.7/40.0	50/57	50/60	34.7/40	43/50	45/50	93/107	100/110
HKSC15XF*	0.0/0.0	6.5/6.5	15/15	30.0/34.6	38/43	40/45	---	---
HKSC20XF*	0.0/0.0	6.5/6.5	15/15	37.5/43.3	47/54	50/60	---	---
DV60PVCD14A*	0.0/0.0	8.6/8.6	15/15	---	---	---	---	---
HKS*03XC*	10.8/12.5	22/24	25/25	---	---	---	---	---
HKS*05XC*	17.3/20.0	30.3/34	35/35	---	---	---	---	---
HKS*06XC*	21.7/25.0	36/40	40/40	---	---	---	---	---
HKS*08XC*	28.9/33.3	45/50.3	45/60	---	---	---	---	---
HKS*10XC*	34.7/40.0	52/59	60/60	---	---	---	---	---
HKSC15*##	34.7/40.0	52/59	60/60	17.3/20	22/25	25/25	74/84	80/90
HKSC20D##	34.7/40.0	52/59	60/60	34.7/40.0	43/50	45/50	95/109	100/110
HKSC15XF*	0.0/0.0	8.6/8.6	15/15	30.0/34.6	38/43	40/45	---	---
HKSC20XF*	0.0/0.0	8.6/8.6	15/15	37.5/43.3	47/54	50/60	---	---
HKSC25DC*	52.0/60.0	74/84	80/90	35/40	43/50	45/50	117/134	125/150

¹ Minimum Circuit Ampacity (Heater Amps + Motor Amps) X 1.25

² Maximum Overcurrent Protection = 2.25 X Motor Amps + Heater Amps

^ Circuit 1: Single-phase for Air Handlers Circuit 2: Three-phase for HKR3 Heater Kits

* Revision level that may or may not be designated

C = Circuit Breaker Option

— indicates Not Required

HKA meets the new UL1995 requirements for 15 and 20KW heaters

AIR HANDLER ELECTRICAL DATA — DVPTC

MODEL & HEAT KIT USAGE	CIRCUIT 1			CIRCUIT 2			SINGLE-POINT KIT	
	HEATER AMPS	MCA ¹	MOP ²	HEATER AMPS	MCA ¹	MOP ²	MCA ¹	MOP ²
DVPTC24B14A*	0.0/0.0	4.9/4.9	15/15	---	---	---	---	---
HKS*03XC*	10.8/12.5	18/21	20/25	---	---	---	---	---
HKS*05XC*	17.3/20.0	27/30	30/30	---	---	---	---	---
HKS*06XC*	21.7/25.0	32/36	35/40	---	---	---	---	---
HKS*08XC*	28.9/33.3	41/47	45/50	---	---	---	---	---
HKS*10XC*	34.7/40.0	48/55	50/60	---	---	---	---	---
DVPTC30C14A*	0.0/0.0	4.9/4.9	15/15	---	---	---	---	---
HKS*03XC*	10.8/12.5	18/21	20/25	---	---	---	---	---
HKS*05XC*	17.3/20.0	27/30	30/30	---	---	---	---	---
HKS*06XC*	21.7/25.0	32/36	35/40	---	---	---	---	---
HKS*08XC*	28.9/33.3	41/47	45/50	---	---	---	---	---
HKS*10XC*	34.7/40.0	48/55	50/60	---	---	---	---	---
DVPTC36C14A*	0.0/0.0	6.5/6.5	15/15	---	---	---	---	---
HKS*03XC*	10.8/12.5	20/22	20/25	---	---	---	---	---
HKS*05XC*	17.3/20.0	28/32	30/35	---	---	---	---	---
HKS*06XC*	21.7/25.0	34/38	35/40	---	---	---	---	---
HKS*08XC*	28.9/33.3	43/48	45/50	---	---	---	---	---
HKS*10XC*	34.7/40.0	50/57	50/60	---	---	---	---	---
HKSC15*##	34.7/40.0	50/57	50/60	17.3/20.0	22/25	25/25	72/82	80/90
HKSC19C##	34.7/40.0	50/57	50/60	34.7/40	43/50	45/50	93/107	100/110
HKSC15XF*	0.0/0.0	6.5/6.5	15/15	30.0/34.6	38/43	40/45	---	---
DVPTC48C14A*	0.0/0.0	6.5/6.5	15/15	---	---	---	---	---
HKS*03XC*	10.8/12.5	20/22	20/25	---	---	---	---	---
HKS*05XC*	17.3/20.0	28/32	30/35	---	---	---	---	---
HKS*06XC*	21.7/25.0	34/38	35/40	---	---	---	---	---
HKS*08XC*	28.9/33.3	43/48	45/50	---	---	---	---	---
HKS*10XC*	34.7/40.0	50/57	50/60	---	---	---	---	---
HKSC15*##	34.7/40.0	50/57	50/60	17.3/20.0	22/25	25/25	72/82	80/90
HKSC19C##	34.7/40.0	50/57	50/60	34.7/40	43/50	45/50	93/107	100/110
HKSC15XF*	0.0/0.0	6.5/6.5	15/15	30.0/34.6	38/43	40/45	---	---
DVPTC42D14A*	0.0/0.0	6.5/6.5	15/15	---	---	---	---	---
HKS*03XC*	10.8/12.5	20/22	20/25	---	---	---	---	---
HKS*05XC*	17.3/20.0	28/32	30/35	---	---	---	---	---
HKS*06XC*	21.7/25.0	34/38	35/40	---	---	---	---	---
HKS*08XC*	28.9/33.3	43/48	45/50	---	---	---	---	---
HKS*10XC*	34.7/40.0	50/57	50/60	---	---	---	---	---
HKSC15*##	34.7/40.0	50/57	50/60	17.3/20.0	22/25	25/25	72/82	80/90
HKSC20D##	34.7/40.0	50/57	50/60	34.7/40	43/50	45/50	93/107	100/110
HKSC15XF*	0.0/0.0	6.5/6.5	15/15	30.0/34.6	38/43	40/45	---	---
HKSC20XF*	0.0/0.0	6.5/6.5	15/15	37.5/43.3	47/54	50/60	---	---

¹ Minimum Circuit Ampacity @ 208 / 240 V

² Maximum Overcurrent Protection Device @ 208 / 240V

^ Heat Kit requires three-phase power supply

* Revision level that may or may not be designated

C = Circuit breaker option

— indicates Not Required

NOTES

- All HKR ampacities noted above include air handler motor amps, excluding three-phase models.
- HKA meets the new UL1995 requirements for 15 and 20KW heaters; HKR-21C* is Obsolete; no replacement

AIR HANDLER ELECTRICAL DATA — DVPTC (CONT.)

MODEL & HEAT KIT USAGE	CIRCUIT 1			CIRCUIT 2			SINGLE-POINT KIT	
	HEATER AMPS	MCA ¹	MOP ²	HEATER AMPS	MCA ¹	MOP ²	MCA ¹	MOP ²
DVPTC48D14A*	0.0/0.0	6.5/6.5	15/15	---	---	---	---	---
HKS*03XC*	10.8/12.5	20/22	20/25	---	---	---	---	---
HKS*05XC*	17.3/20.0	28/32	30/35	---	---	---	---	---
HKS*06XC*	21.7/25.0	34/38	35/40	---	---	---	---	---
HKS*08XC*	28.9/33.3	43/48	45/50	---	---	---	---	---
HKS*10XC*	34.7/40.0	50/57	50/60	---	---	---	---	---
HKSC15*##	34.7/40.0	50/57	50/60	17.3/20.0	22/25	25/25	72/82	80/90
HKSC20D#*	34.7/40.0	50/57	50/60	34.7/40	43/50	45/50	93/107	100/110
HKSC15XF*	0.0/0.0	6.5/6.5	15/15	30.0/34.6	38/43	40/45	---	---
HKSC20XF*	0.0/0.0	6.5/6.5	15/15	37.5/43.3	47/54	50/60	---	---
HKSC25DC*	52.0/60.0	72/82	80/90	34.7/40.0	43/50	45/50	115/132	125/150
DVPTC60D14A*	0.0/0.0	8.6/8.6	15/15	---	---	---	---	---
HKS*03XC*	10.8/12.5	22/24	25/25	---	---	---	---	---
HKS*05XC*	17.3/20.0	30/34	35/35	---	---	---	---	---
HKS*06XC*	21.7/25.0	36/40	40/40	---	---	---	---	---
HKS*08XC*	28.9/33.3	45/50	45/60	---	---	---	---	---
HKS*10XC*	34.7/40.0	52/59	60/60	---	---	---	---	---
HKSC15*##	34.7/40.0	52/59	60/60	17.3/20	22/25	25/25	74/84	80/90
HKSC20D#*	34.7/40.0	52/59	60/60	34.7/40.0	43/50	45/50	95/109	100/110
HKSC15XF*	0.0/0.0	8.6/8.6	15/15	30.0/34.6	38/43	40/45	---	---
HKSC20XF*	0.0/0.0	8.6/8.6	15/15	37.5/43.3	47/54	50/60	---	---
HKSC25DC*	52.0/60.0	74/84	80/90	35/40	43/50	45/50	117/134	125/150

¹ Minimum Circuit Ampacity @ 208 / 240 V

² Maximum Overcurrent Protection Device @ 208 / 240V

^ Heat Kit requires three-phase power supply

* Revision level that may or may not be designated

C = Circuit breaker option

— indicates Not Required

NOTES

- All HKR ampacities noted above include air handler motor amps, excluding three-phase models.
- HKA meets the new UL1995 requirements for 15 and 20KW heaters; HKR-21C* is Obsolete; no replacement

AIR HANDLER ELECTRICAL DATA — ASPT

MODEL & HEAT KIT USAGE	CIRCUIT 1			CIRCUIT 2			SINGLE-POINT KIT	
	HEATER AMPS	MCA ¹	MOP ²	HEATER AMPS	MCA ¹	MOP ²	MCA ¹	MOP ²
ASPT24B14AC	0 / 0	3/3	15 / 15	---	---	---	---	---
HKS*03XC*	10.8 / 12.5	17 / 19	20 / 20	---	---	---	--	--
HKS*05XC*	17.3 / 20.0	25 / 28	25 / 30	---	---	---	--	--
HKS*06XC*	21.7 / 25.0	30 / 34	35 / 35	---	---	---	--	--
HKS*08XC*	28.9 / 33.3	39 / 45	40 / 45	---	---	---	--	--
HKS*10XC*	34.7 / 40.0	46 / 53	50 / 60	---	---	---	--	--
HKSC15*##	34.7 / 40.0	46 / 53	50 / 60	17.3 / 20	22 / 25	25 / 25	68 / 78	70 / 80
ASPT30C14AB	0 / 0	3.9 / 3.9	15 / 15	---	---	---	--	--
HKS*03XC*	10.8 / 12.5	17 / 20	20 / 20	---	---	---	--	--
HKS*05XC*	17.3 / 20.0	26 / 29	30 / 30	---	---	---	--	--
HKS*06XC*	21.7 / 25.0	31 / 35	35 / 40	---	---	---	--	--
HKS*08XC*	28.9 / 33.3	40 / 46	40 / 50	---	---	---	--	--
HKS*10XC*	34.7 / 40.0	47 / 54	50 / 60	---	---	---	--	--
HKSC15*##	34.7 / 40.0	47 / 54	50 / 60	17.3 / 20	22 / 25	25 / 25	69 / 79	70 / 80
ASPT36C14AC	0 / 0	4/4	15 / 15	---	---	---	--	--
HKS*03XC*	10.8 / 12.5	17 / 20	20 / 20	---	---	---	--	--
HKS*05XC*	17.3 / 20.0	26 / 29	30 / 30	---	---	---	--	--
HKS*06XC*	21.7 / 25.0	31 / 35	40 / 40	---	---	---	--	--
HKS*08XC*	28.9 / 33.3	40 / 46	40 / 50	---	---	---	--	--
HKS*10XC*	34.7 / 40.0	47 / 54	50 / 60	---	---	---	--	--
HKSC15*##	34.7 / 40.0	47 / 54	50 / 60	17.3 / 20	22 / 25	25 / 25	69 / 79	70 / 80
HKSC19*##	34.7 / 40.0	47 / 54	50 / 60	34.7 / 40	43 / 50	45 / 50	91 / 104	100 / 110
HKSC15XF*	0/0	4/4	15/15	30/34.6	38/43	40/50	--	--
HKSC20XF*	0/0	4/4	15/15	38/43	47/54	50/60	--	--
ASPT42C14	0 / 0	4/4	15 / 15	---	---	---	--	--
HKS*03XC*	10.8 / 12.5	17 / 20	20 / 20	---	---	---	--	--
HKS*05XC*	17.3 / 20.0	26 / 29	30 / 30	---	---	---	--	--
HKS*06XC*	21.7 / 25.0	31 / 35	40 / 40	---	---	---	--	--
HKS*08XC*	28.9 / 33.3	40 / 46	40 / 50	---	---	---	--	--
HKS*10XC*	34.7 / 40.0	47 / 54	50 / 60	---	---	---	--	--
HKSC15*##	34.7 / 40.0	47 / 54	50 / 60	17.3 / 20	22 / 25	25 / 25	69 / 79	70 / 80
HKSC19*##	34.7 / 40.0	47 / 54	50 / 60	34.7 / 40	43 / 50	45 / 50	91 / 104	100 / 110
HKSC15XF*	0/0	4/4	15/15	30/34.6	38/43	40/45	--	--
HKSC20XF*	0/0	4/4	15/15	38/43	47/54	50/60	--	--

¹ Minimum Circuit Ampacity (Heater Amps + Motor Amps) X 1.25

² Maximum Overcurrent Protection = 2.25 X Motor Amps + Heater Amps

^ Circuit 1: Single-phase for Air Handlers Circuit 2: Three-phase for HKR3 Heater Kits

* Revision level that may or may not be designated

C = Circuit Breaker Option

— indicates Not Required

AIR HANDLER ELECTRICAL DATA — ASPT (CONT.)

MODEL & HEAT KIT USAGE	CIRCUIT 1			CIRCUIT 2			SINGLE-POINT KIT	
	HEATER AMPS	MCA ¹	MOP ²	HEATER AMPS	MCA ¹	MOP ²	MCA ¹	MOP ²
ASPT48C14AD	0 / 0	7/7	15 / 15	---	---	---	--	--
HKS*03XC*	10.8 / 12.5	20.3 / 22	25 / 25	---	---	---	--	--
HKS*05XC*	17.3 / 20.0	28 / 32	30 / 35	---	---	---	--	--
HKS*06XC*	21.7 / 25.0	34 / 38	40 / 40	---	---	---	--	--
HKS*08XC*	28.9 / 33.3	43 / 48	45 / 50	---	---	---	--	--
HKS*10XC*	34.7 / 40.0	50.1 / 57	60 / 60	---	---	---	--	--
HKSC15*##	34.7 / 40.0	50.1 / 57	60 / 60	17.3 / 20	22 / 25	25 / 25	72 / 82	80 / 90
HKSC19*##	34.7 / 40.0	50.1 / 57	60 / 60	34.7 / 40	43 / 50	45 / 50	93 / 107	100 / 110
HKSC15XF*	0/0	8/8	15/15	30/34.6	38/44	40/50	--	--
HKSC20XF*	0/0	8/8	15/15	38/43	47/54	50/60	--	--
ASPT42D14	0 / 0	6/6	15 / 15	---	---	---	--	--
HKS*03XC*	10.8 / 12.5	20 / 22	20 / 25	---	---	---	--	--
HKS*05XC*	17.3 / 20.0	28 / 31	30 / 35	---	---	---	--	--
HKS*06XC*	21.7 / 25.0	33 / 37	35 / 40	---	---	---	--	--
HKS*08XC*	28.9 / 33.3	42 / 48	45 / 50	---	---	---	--	--
HKS*10XC*	34.7 / 40.0	49 / 56	50 / 60	---	---	---	--	--
HKSC15*##	34.7 / 40.0	49 / 56	50 / 60	17.3 / 20	22 / 25	25 / 25	71 / 81	80 / 90
HKSC20*##	34.3 / 39.6	49 / 56	50 / 60	34.7 / 40	43 / 50	45 / 50	93 / 106	100 / 110
HKSC15XF*	0/0	6/6	15/15	30/34.6	38/44	40/50	--	--
HKSC20XF*	0/0	6/6	15/15	38/43	47/54	50/60	--	--
ASPT48D14AD	0 / 0	8/8	15 / 15	---	---	---	--	--
HKS*03XC*	10.8 / 12.5	22 / 24	25 / 25	---	---	---	--	--
HKS*05XC*	17.3 / 20.0	30 / 33	30 / 35	---	---	---	--	--
HKS*06XC*	21.7 / 25.0	35.4 / 40	40 / 40	---	---	---	--	--
HKS*08XC*	28.9 / 33.3	44 / 50	45 / 50	---	---	---	--	--
HKS*10XC*	34.7 / 40.0	52 / 58	60 / 60	---	---	---	--	--
HKSC15*##	34.7 / 40.0	52 / 58	60 / 60	17.3 / 20	22 / 25	25 / 25	73 / 83	80 / 90
HKSC20*##	34.3 / 39.6	52 / 58	60 / 60	34.7 / 40	43 / 50	45 / 50	95 / 108	100 / 110
HKSC15XF*	0/0	8/8	15/15	30/34.6	38/43	40/45	--	--
HKSC20XF*	0/0	8/8	15/15	38/43	47/54	50/60	--	--
HKSC25*##	52 / 60	73 / 83	80 / 90	34.7 / 40	43 / 50	45 / 50	117 / 133	125 / 150
ASPT60D14AC	0 / 0	8.3 / 8.3	15 / 15	---	---	---	--	--
HKS*03XC*	10.8 / 12.5	22 / 24	25 / 25	---	---	---	--	--
HKS*05XC*	17.3 / 20.0	30 / 33	30 / 35	---	---	---	--	--
HKS*06XC*	21.7 / 25.0	35.4 / 40	40 / 40	---	---	---	--	--
HKS*08XC*	28.9 / 33.3	44 / 50	45 / 50	---	---	---	--	--
HKS*10XC*	34.7 / 40.0	52 / 58	60 / 60	---	---	---	--	--
HKSC15*##	34.7 / 40.0	52 / 58	60 / 60	17.3 / 20	22 / 25	25 / 25	73 / 83	80 / 90
HKSC20*##	34.3 / 39.6	52 / 58	60 / 60	34.7 / 40	43 / 50	45 / 50	95 / 108	100 / 110
HKSC15XF*	0/0	8.3 / 8.3	15/15	30/34.6	38/43	40/45	--	--
HKSC20XF*	0/0	8.3 / 8.3	15/15	38/43	47/54	50/60	--	--
HKSC25*##	52 / 60	73 / 83	80 / 90	34.7 / 40	43 / 50	45 / 50	117 / 133	125 / 150

¹ Minimum Circuit Ampacity (Heater Amps + Motor Amps) X 1.25

² Maximum Overcurrent Protection = 2.25 X Motor Amps + Heater Amps

^ Circuit 1: Single-phase for Air Handlers Circuit 2: Three-phase for HKR3 Heater Kits

* Revision level that may or may not be designated

C = Circuit Breaker Option

— indicates Not Required

AIR HANDLER ELECTRICAL DATA — ASUF

MODEL & HEAT KIT USAGE	CIRCUIT 1			CIRCUIT 2			SINGLE-POINT KIT	
	HEATER AMPS	MCA ¹	MOP ²	HEATER AMPS	MCA ¹	MOP ²	MCA ¹	MOP ²
ASUF29B14AB	0 / 0	3 / 3	15 / 15	---	---	---	---	---
HKS*03XC*	10.8 / 12.5	17/19	20 / 20	---	---	---	--	--
HKS*05XC*	17.3 / 20.0	25/28	25 / 30	---	---	---	--	--
HKS*06XC*	21.7 / 25.0	30.2 / 34	35 / 35	---	---	---	--	--
HKS*08XC*	28.9 / 33.3	39 / 45	40 / 45	---	---	---	--	--
HKS*10XC*	34.7 / 40.0	46 / 53	50 / 60	---	---	---	--	--
HKSC15*##	34.7 / 40.0	46 / 53	50 / 60	17.3 / 20	22 / 25	25 / 25	68 / 78	70 / 80
ASUF39C14AB	0 / 0	4 / 4	15 / 15	---	---	---	--	--
HKS*03XC*	10.8 / 12.5	17 / 20	20 / 20	---	---	---	--	--
HKS*05XC*	17.3 / 20.0	26 / 29	30 / 30	---	---	---	--	--
HKS*06XC*	21.7 / 25.0	31 / 35.2	35 / 40	---	---	---	--	--
HKS*08XC*	28.9 / 33.3	40 / 46	40/ 50	---	---	---	--	--
HKS*10XC*	34.7 / 40.0	47 / 54	50 / 60	---	---	---	--	--
HKSC15*##	34.7 / 40.0	47 / 54	50 / 60	17.3 / 20	22 / 25	25 / 25	69 / 79	70 / 80
HKSC19*##	34.3 / 40.0	47 / 54	50 / 60	34.7 / 40	43 / 50	45 / 50	91 / 104	100 / 110
HKSC15XF*	0/0	4 / 4	15/15	30/34.6	38/43	40/45	--	--
HKSC20XF*	0/0	4 / 4	15/15	37/43	47/54	50/60	--	--
ASUF49C14AC	0 / 0	7 / 7	15 / 15	---	---	---	--	--
HKS*03XC*	10.8 / 12.5	20 / 22	25 / 25	---	---	---	--	--
HKS*05XC*	17.3 / 20.0	28 / 32	30 / 35	---	---	---	--	--
HKS*06XC*	21.7 / 25.0	34 / 38	35 / 40	---	---	---	--	--
HKS*08XC*	28.9 / 33.3	43 / 48	45 / 50	---	---	---	--	--
HKS*10XC*	34.7 / 40.0	50.1 / 57	60 / 60	---	---	---	--	--
HKSC15*##	34.7 / 40.0	50.1 / 57	60 / 60	17.3 / 20	22 / 25	25 / 25	72 / 82	80 / 90
HKSC19C##	34.3 / 40.0	50.1 / 57	60 / 60	34.7 / 40	43 / 50	45 / 50	93 / 107	100 / 110
HKSC15XF*	0/0	7 / 7	15/15	30/34.6	38/43	40/50	--	--
HKSC20XF*	0/0	7 / 7	15/15	37/43	47/54	50/60	--	--
ASUF59D14AD	0 / 0	8 / 8	15 / 15	---	---	---	--	--
HKS*03XC*	10.8 / 12.5	22 / 24	25 / 25	---	---	---	--	--
HKS*05XC*	17.3 / 20.0	30 / 33	30 / 35	---	---	---	--	--
HKS*06XC*	21.7 / 25.0	35.4 / 40	40 / 40	---	---	---	--	--
HKS*08XC*	28.9 / 33.3	44 / 50	45 / 50	---	---	---	--	--
HKS*10XC*	34.7 / 40.0	52 / 58	60 / 60	---	---	---	--	--
HKSC15*##	34.7 / 40.0	52 / 58	60 / 60	17.3 / 20	22 / 25	25 / 25	73 / 83	80 / 90
HKSC20D##	34.3 / 39.6	52 / 58	60 / 60	34.7 / 40	43 / 50	45 / 50	95 / 108	100 / 110
HKSC15XF*	0/0	8 / 8	15/15	30/34.6	38 / 43	40 / 45	--	--
HKSC20XF*	0/0	8 / 8	15/15	38/43	47/54	50 / 60	--	--
HKSC25DC*	52/60	73/83	80/90	34.7/40	43/50	45/50	117 / 133	125 / 150

¹ Minimum Circuit Ampacity (Heater Amps + Motor Amps) X 1.25

² Maximum Overcurrent Protection = 2.25 X Motor Amps + Heater Amps

^ Circuit 1: Single-phase for Air Handlers Circuit 2: Three-phase for HKR3 Heater Kits

* Revision level that may or may not be designated

C = Circuit Breaker Option

— indicates Not Required

AIR HANDLER ELECTRICAL DATA — ARPT

MODEL & HEAT KIT USAGE	CIRCUIT 1			CIRCUIT 2			SINGLE-POINT KIT	
	HEATER AMPS	MCA ¹	MOP ²	HEATER AMPS	MCA ¹	MOP ²	MCA ¹	MOP ²
ARPT18B14AC	0/0	2.4/2.4	15/15	---	---	---	---	---
HKS*03XC*	10.8/12.5	16/18	20/20	---	---	---	---	---
HKS*05XC*	17.3/20	24/27	25/30	---	---	---	---	---
HKS*06XC*	21.7/25	29/34	30/35	---	---	---	---	---
HKS*08XC*	28.9/33.3	38/44	40/45	---	---	---	---	---
HKS*10XC*	34.7/40	46/52	50/60	---	---	---	---	---
ARPT24B14AC	0/0	2.4/2.4	15/15	---	---	---	---	---
HKS*03XC*	10.8/12.5	16/18	20/20	---	---	---	---	---
HKS*05XC*	17.3/20	24/27	25/30	---	---	---	---	---
HKS*06XC*	21.7/25	29/34	30/35	---	---	---	---	---
HKS*08XC*	28.9/33.3	38/44	40/45	---	---	---	---	---
HKS*10XC*	34.7/40	46/52	50/60	---	---	---	---	---
HKSC15*##	34.7/40	46/52	50/60	17.3/20	22/25	25/25	67/77	70/80
ARPT30B14AC	0/0	2.4/2.4	15/15	---	---	---	---	---
HKS*03XC*	10.8/12.5	16/18	20/20	---	---	---	---	---
HKS*05XC*	17.3/20	24/27	25/30	---	---	---	---	---
HKS*06XC*	21.7/25	29/34	30/35	---	---	---	---	---
HKS*08XC*	28.9/33.3	38/44	40/45	---	---	---	---	---
HKS*10XC*	34.7/40	46/52	50/60	---	---	---	---	---
HKSC15*##	34.7/40	46/52	50/60	17.3/20	22/25	25/25	67/77	70/80
ARPT36C14AC	0/0	4/4	15/15	---	---	---	---	---
HKS*03XC*	10.8/12.5	17/20	20/20	---	---	---	---	---
HKS*05XC*	17.3/20	26/29	30/30	---	---	---	---	---
HKS*06XC*	21.7/25	31/35.1	35/40	---	---	---	---	---
HKS*08XC*	28.9/33.3	40/46	45/50	---	---	---	---	---
HKS*10XC*	34.7/40	47/54	50/60	---	---	---	---	---
HKSC15*##	34.7/40	47/54	50/60	17.3/20	22/25	25/25	69/79	70/80
HKSC19C#*	34.7/40	47/54	50/60	34.7/40	43/50	45/50	91/104	100/110
HKSC15XF*	0/0	4/4	15/15	30/34.6	38/43	40/45	---	---
HKSC20XF*	0/0	4/4	15/15	38/43	47/54	50/60	---	---

¹ Minimum Circuit Ampacity (Heater Amps + Motor Amps) X 1.25

² Maximum Overcurrent Protection = 2.25 X Motor Amps + Heater Amps

* Revision level that may or may not be designated

— indicates Not Required

AIR HANDLER ELECTRICAL DATA — ARPT (CONT.)

MODEL & HEAT KIT USAGE	CIRCUIT 1			CIRCUIT 2			SINGLE-POINT KIT	
	HEATER AMPS	MCA ¹	MOP ²	HEATER AMPS	MCA ¹	MOP ²	MCA ¹	MOP ²
ARPT36D14AC	0/0	4/4	15/15	---	---	---	---	---
HKS*03XC*	10.8/12.5	17/19	20/20	---	---	---	---	---
HKS*05XC*	17.3/20	25/29	30/30	---	---	---	---	---
HKS*06XC*	21.7/25	31/35	35/40	---	---	---	---	---
HKS*08XC*	28.9/33.3	40/45.4	40/50	---	---	---	---	---
HKS*10XC*	34.7/40	47/54	50/60	---	---	---	---	---
HKSC15*##	34.7/40	47/54	50/60	17.3/20	22/25	25/25	69/79	70/80
HKSC20D##	34.7/40	47/54	50/60	34.7/40	43/50	45/50	90/104	100/110
HKSC15XF*	0/0	4/4	15/15	30/34.6	38/43	40/45	---	---
HKSC20XF*	0/0	4/4	15/15	38/43	47/54	50/60	---	---
ARPT42D14AC	0/0	4/4	15/15	---	---	---	---	---
HKS*03XC*	10.8/12.5	18/20	20/20	---	---	---	---	---
HKS*05XC*	17.3/20	26/29	30/30	---	---	---	---	---
HKS*06XC*	21.7/25	31/36	35/40	---	---	---	---	---
HKS*08XC*	28.9/33.3	40.5/46	45/50	---	---	---	---	---
HKS*10XC*	34.7/40	48/54	50/60	---	---	---	---	---
HKSC15*##	34.7/40	48/54	50/60	17.3/20	22/25	25/30	69/79	70/80
HKSC20D##	34.7/40	48/54	50/60	34.7/40	43/50	45/50	91/104	100/110
HKSC15XF*	0/0	4/4	15/15	30/34.6	38/43	40/50	---	---
HKSC20XF*	0/0	4/4	15/15	38/43	47/54	50/60	---	---
ARPT48D14AC	0/0	4/4	15/15	---	---	---	---	---
HKS*03XC*	10.8/12.5	18/20	20/20	---	---	---	---	---
HKS*05XC*	17.3/20	26/29	30/30	---	---	---	---	---
HKS*06XC*	21.7/25	31/36	35/40	---	---	---	---	---
HKS*08XC*	28.9/33.3	40.5/46	45/50	---	---	---	---	---
HKS*10XC*	34.7/40	48/54	50/60	---	---	---	---	---
HKSC15*##	34.7/40	48/54	50/60	17.3/20	22/25	25/25	69/79	70/80
HKSC20D##	34.7/40	48/54	50/60	34.7/40	43/50	45/50	91/104	100/110
HKSC15XF*	0/0	4/4	15/15	30/34.6	38/43	40/45	---	---
HKSC20XF*	0/0	4/4	15/15	38/43	47/54	50/60	---	---
ARPT60D14AC	0/0	6/6	15/15	---	---	---	---	---
HKS*03XC*	10.8/12.5	19/21	20/25	---	---	---	---	---
HKS*05XC*	17.3/20	27/31	30/35	---	---	---	---	---
HKS*06XC*	21.7/25	33/37	35/40	---	---	---	---	---
HKS*08XC*	28.9/33.3	42/47	45/50	---	---	---	---	---
HKS*10XC*	34.7/40	49/56	50/60	---	---	---	---	---
HKSC15*##	34.7/40	49/56	50/60	17.3/20	22/25	25/25	71/81	80/90
HKSC20D##	34.7/40	49/56	50/60	34.7/40	43/50	45/50	92/106	100/110
HKSC15XF*	0/0	6/6	15/15	30/34.6	38/43	40/45	---	---
HKSC20XF*	0/0	6/6	15/15	38/43	47/54	50/60	---	---
HKSC25DC*	52/60	71/81	80/90	35/40	43/50	45/50	114/131	125/150

¹ Minimum Circuit Ampacity (Heater Amps + Motor Amps) X 1.25

² Maximum Overcurrent Protection = 2.25 X Motor Amps + Heater Amps

* Revision level that may or may not be designated

— indicates Not Required

AIR HANDLER ELECTRICAL DATA — ARUF

MODEL & HEAT KIT USAGE	CIRCUIT 1			CIRCUIT 2			SINGLE-POINT KIT	
	HEATER AMPS	MCA ¹	MOP ²	HEATER AMPS	MCA ¹	MOP ²	MCA ¹	MOP ²
ARUF18B14AB	0/0	2.4/2.4	15/15	---	---	---	---	---
HKS*03XC*	10.8/12.5	16/18	20/20	---	---	---	---	---
HKS*05XC*	17.3/20	24/27	25/30	---	---	---	---	---
HKS*06XC*	21.7/25	29/34	30/35	---	---	---	---	---
HKS*08XC*	28.9/33.3	38/44	40/45	---	---	---	---	---
HKS*10XC*	34.7/40	46/52	50/60	---	---	---	---	---
ARUF24B14CA	0/0	2.4/2.4	15/15	---	---	---	---	---
HKS*03XC*	10.8/12.5	16/18	20/20	---	---	---	---	---
HKS*05XC*	17.3/20	24/28	25/30	---	---	---	---	---
HKS*06XC*	21.7/25	29/34	30/35	---	---	---	---	---
HKS*08XC*	28.9/33.3	38/44	40/45	---	---	---	---	---
HKS*10XC*	34.7/40	46/52	50/60	---	---	---	---	---
ARUF30B14AC	0/0	2.4/2.4	15/15	---	---	---	---	---
HKS*03XC*	10.8/12.5	16/18	20/20	---	---	---	---	---
HKS*05XC*	17.3/20	24/27	25/30	---	---	---	---	---
HKS*06XC*	21.7/25	29/34	30/35	---	---	---	---	---
HKS*08XC*	28.9/33.3	38/44	40/45	---	---	---	---	---
HKS*10XC*	34.7/40	46/52	50/60	---	---	---	---	---
HKSC15*##	34.7/40	46/53	50/60	17.3/20	22/25	25/25	67/79	70/80
ARUF30C14BB	0/0	4/4	15/15	---	---	---	---	---
HKS*03XC*	10.8/12.5	17/19	20/20	---	---	---	---	---
HKS*05XC*	17.3/20	25.4/29	30/30	---	---	---	---	---
HKS*06XC*	21.7/25	31/35	35/35	---	---	---	---	---
HKS*08XC*	28.9/33.3	40/45.4	40/50	---	---	---	---	---
HKS*10XC*	34.7/40	47/54	50/60	---	---	---	---	---
HKSC15*##	34.7/40	47/54	50/60	17.3/20	22/25	25/25	69/79	70/80
HKSC19C#*	34.7/40	47/54	50/60	34.7/40	43/50	45/50	90.4/104	100/110
HKSC15XF*	0/0	4/4	15/15	30/34.6	38/43	40/45	---	---
HKSC20XF*	0/0	4/4	15/15	38/43	47/54	50/60	---	---

¹ Minimum Circuit Ampacity (Heater Amps + Motor Amps) X 1.25

² Maximum Overcurrent Protection = 2.25 X Motor Amps + Heater Amps

* Revision level that may or may not be designated

C = Circuit Breaker Option (CA is for 208V and CB is for 240V)

--- indicates Not Required

AIR HANDLER ELECTRICAL DATA — ARUF (CONT.)

MODEL & HEAT KIT USAGE	CIRCUIT 1			CIRCUIT 2			SINGLE-POINT KIT	
	HEATER AMPS	MCA ¹	MOP ²	HEATER AMPS	MCA ¹	MOP ²	MCA ¹	MOP ²
ARUF36C14BC	0/0	4/4	15/15	---	---	---	---	---
HKS*03XC*	10.8/12.5	17/19	20/20	---	---	---	---	---
HKS*05XC*	17.3/20	25.4/29	30/30	---	---	---	---	---
HKS*06XC*	21.7/25	31/35	35/35	---	---	---	---	---
HKS*08XC*	28.9/33.3	40/45.4	40/50	---	---	---	---	---
HKS*10XC*	34.7/40	47/54	50/60	---	---	---	---	---
HKSC15**	34.7/40	47/54	50/60	17.3/20	22/25	25/25	69/79	70/80
HKSC19C#*	34.7/40	47/54	50/60	34.7/40	43/50	45/50	90.4/104	100/110
HKSC15XF*	0/0	4/4	15/15	30/34.6	38/43	40/45	---	---
HKSC20XF*	0/0	4/4	15/15	38/43	47/54	50/60	---	---
ARUF42C14AD	0/0	3.8/3.8	15/15	---	---	---	---	---
HKS*03XC*	10.8/12.5	17/20	20/20	---	---	---	---	---
HKS*05XC*	17.3/20	26/29	30/30	---	---	---	---	---
HKS*06XC*	21.7/25	31/35.1	35/40	---	---	---	---	---
HKS*08XC*	28.9/33.3	40/46	40/50	---	---	---	---	---
HKS*10XC*	34.7/40	47/54	50/60	---	---	---	---	---
HKSC15**	34.7/40	47/54	50/60	17.3/20	22/25	25/25	69/79	70/80
HKSC19C#*	34.7/40	47/54	50/60	34.7/40	43/50	45/50	91/104	100/110
HKSC15XF*	0/0	4/4	15/15	30/34.6	38/43	40/45	---	---
HKSC20XF*	0/0	4/4	15/15	38/43	47/54	50/60	---	---
ARUF48D14AC	0/0	4/4	15/15	---	---	---	---	---
HKS*03XC*	10.8/12.5	18/20	20/20	---	---	---	---	---
HKS*05XC*	17.3/20	26/29	30/30	---	---	---	---	---
HKS*06XC*	21.7/25	31/36	35/40	---	---	---	---	---
HKS*08XC*	28.9/33.3	40/46	45/50	---	---	---	---	---
HKS*10XC*	34.7/40	48/54	50/60	---	---	---	---	---
HKSC15**	34.7/40	48/54	50/60	17.3/20	22/25	25/25	69/79	70/80
HKSC20D#*	34.7/40	48/54	50/60	34.7/40	43/50	45/50	91/104	100/110
HKSC15XF*	0/0	4/4	15/15	30/34.6	38/43	40/45	---	---
HKSC20XF*	0/0	4/4	15/15	38/43	47/54	50/60	---	---
ARUF60D14AA	0/0	5.8/5.8	15/15	---	---	---	---	---
HKS*03XC*	10.8/12.5	19/21	20/25	---	---	---	---	---
HKS*05XC*	17.3/20	27/31	30/35	---	---	---	---	---
HKS*06XC*	21.7/25	33/37	35/40	---	---	---	---	---
HKS*08XC*	28.9/33.3	42/48	45/50	---	---	---	---	---
HKS*10XC*	34.7/40	49/56	50/60	---	---	---	---	---
HKSC15**	34.7/40	49/56	50/60	17.3/20	22/25	25/25	71/81	80/90
HKSC20D#*	34.7/40	49/56	50/60	34.7/40	44/50	45/50	92/106	100/110
HKSC15XF*	0/0	5.8/5.8	15/15	30/34.6	38/43	40/45	---	---
HKSC20XF*	0/0	5.8/5.8	15/15	38/43	47/54	50/60	---	---
HKSC25DC*	52/60	71/81	80/90	35/40	43/50	45/50	114/131	125/150

¹ Minimum Circuit Ampacity (Heater Amps + Motor Amps) X 1.25

² Maximum Overcurrent Protection = 2.25 X Motor Amps + Heater Amps

* Revision level that may or may not be designated

C = Circuit Breaker Option (CA is for 208V and CB is for 240V)

--- indicates Not Required

AIR HANDLER ELECTRICAL DATA — MBVC

MODEL & HEAT KIT USAGE	CIRCUIT 1			CIRCUIT 2			SINGLE-POINT KIT	
	HEATER AMPS	MCA ¹	MOP ²	HEATER AMPS	MCA ¹	MOP ²	MCA ¹	MOP ²
MBVC1200AA-1A*	0 / 0	4.3 / 4.3	15 / 15	---	---	---	---	---
HKR-03*	10.8 / 12.5	17.8 / 19.9	20 / 20	---	---	---	---	---
HKR-05* / 05C*	17.2 / 19.8	25.7 / 29.0	30 / 30	---	---	---	---	---
HKR-06*	21.7 / 25.0	31.3 / 35.5	35 / 40	---	---	---	---	---
HKR-08* / -08C*	25.3 / 29.2	35.8 / 40.7	40 / 45	---	---	---	---	---
HKR-10* / -10C*	34.3 / 39.6	47.1 / 53.7	50 / 60	---	---	---	---	---
HKA-15C*	34.3 / 39.6	47.1 / 53.7	50 / 60	17.2 / 19.8	21.4 / 24.7	25 / 25	69/79	70 / 80
MBVC1600AA-1A*	0 / 0	6.3 / 6.3	15 / 15	---	---	---	---	---
HKR-03*	10.8 / 12.5	19.8 / 21.9	20 / 25	---	---	---	---	---
HKR-05* / 05C*	17.2 / 19.8	27.7 / 31.0	30 / 35	---	---	---	---	---
HKR-06*	21.7 / 25.0	33.3 / 37.5	35 / 40	---	---	---	---	---
HKR-08* / -08C*	25.3 / 29.2	37.8 / 42.7	40 / 45	---	---	---	---	---
HKR-10* / -10C*	34.3 / 39.6	49.1 / 55.7	50 / 60	---	---	---	---	---
HKA-15C*	34.3 / 39.6	49.1 / 55.7	50 / 60	17.2 / 19.8	21.4 / 24.7	25 / 25	71/81	80 / 90
MBVC2000AA-1A*	0 / 0	5.8 / 5.8	15 / 15	---	---	---	---	---
HKR-03*	10.8 / 12.5	19.3 / 21.4	20 / 25	---	---	---	---	---
HKR-05* / 05C*	17.2 / 19.8	27.2 / 30.5	30 / 35	---	---	---	---	---
HKR-06*	21.7 / 25.0	32.8 / 37.0	35 / 40	---	---	---	---	---
HKR-08* / -08C*	25.3 / 29.2	37.3 / 42.2	40 / 45	---	---	---	---	---
HKR-10* / -10C*	34.3 / 39.6	48.6 / 55.2	50 / 60	---	---	---	---	---
HKA-15C*	34.3 / 39.6	48.6 / 55.2	50 / 60	17.2 / 19.8	21.4 / 24.7	25 / 25	70/80	70 / 90
HKA-20C*	34.3 / 39.6	48.6 / 55.2	50 / 60	34.3 / 39.6	42.9 / 49.5	45 / 50	92/105	100 / 110

¹ Minimum Circuit Ampacity @ 208 / 240 V

² Maximum Overcurrent Protection Device @ 208 / 240 V

* Revision level that may or may not be designated

C = Circuit Breaker Option (HKA meets the new UL1995 requirements for 15 and 20KW heaters)

^ Heat Kit requires three-phase power supply

— indicates Not Required

Note: All HKR ampacities noted above include air handler motor amps, excluding three-phase models.

AIR HANDLER ELECTRICAL DATA — MBR

MODEL & HEAT KIT USAGE	CIRCUIT 1			CIRCUIT 2			SINGLE-POINT KIT	
	HEATER AMPS	MCA ¹	MOP ²	HEATER AMPS	MCA ¹	MOP ²	MCA ¹	MOP ²
MBR0800AA-1 **	0 / 0	1.9 / 1.9	15 / 15	---	---	---	---	---
HKR-03*	10.8 / 12.5	15.4 / 18	20 / 20	---	---	---	---	---
HKR-05* / 05C*	17.2 / 19.8	23 / 27	25 / 30	---	---	---	---	---
HKR-06*	21.7 / 25.0	29 / 33	30 / 35	---	---	---	---	---
HKR-08* / -08C*	25.3 / 29.2	33 / 38	35 / 40	---	---	---	---	---
HKR-10* / -10C*	34.3 / 39.6	45 / 51	45 / 60	---	---	---	---	---
MBR1200AA-1 **	0 / 0	3.0 / 3.0	15 / 15	---	---	---	---	---
HKR-03*	10.8 / 12.5	17 / 19	20 / 20	---	---	---	---	---
HKR-05* / 05C*	17.2 / 19.8	24 / 28	25 / 30	---	---	---	---	---
HKR-06*	21.7 / 25.0	30.1 / 34	35 / 40	---	---	---	---	---
HKR-08* / -08C*	25.3 / 29.2	35 / 39	35 / 40	---	---	---	---	---
HKR-10* / -10C*	34.3 / 39.6	46 / 52	50 / 60	---	---	---	---	---
HKA-15C*	34.3 / 39.6	46 / 52	50 / 60	17.2 / 19.8	21 / 25	25 / 25	67/77	70 / 80
HKA-20C*	34.3 / 39.6	46 / 52	50 / 60	34.3 / 39.6	43 / 49	45 / 50	89/102	90 / 110
^HKR3-15*	0 / 0	3.0 / 3.0	15 / 15	31.3 / 36.1	39 / 45.1	40 / 50	---	---
^HKR3-20*	0 / 0	3.0 / 3.0	15 / 15	40.7 / 46.9	51 / 59	60 / 60	---	---
MBR1600AA-1 **	0 / 0	3.8 / 3.8	15 / 15	---	---	---	---	---
HKR-03*	10.8 / 12.5	17 / 19	20 / 20	---	---	---	---	---
HKR-05* / 05C*	17.2 / 19.8	25.2 / 28	30 / 30	---	---	---	---	---
HKR-06*	21.7 / 25.0	31 / 35	35 / 35	---	---	---	---	---
HKR-08* / -08C*	25.3 / 29.2	35.3 / 40.2	40 / 45	---	---	---	---	---
HKR-10* / -10C*	34.3 / 39.6	47 / 53	50 / 60	---	---	---	---	---
HKA-15C*	34.3 / 39.6	47 / 53	50 / 60	17.2 / 19.8	21 / 25	25 / 25	68/78	70 / 80
HKA-20C*	34.3 / 39.6	47 / 53	50 / 60	34.3 / 39.6	43 / 49	45 / 50	90/103	90 / 110
^HKR3-15*	0 / 0	3.8 / 3.8	15 / 15	31.3 / 36.1	39 / 45.1	60 / 60	---	---
^HKR3-20*	0 / 0	3.8 / 3.8	15 / 15	40.7 / 46.9	51 / 59	60 / 60	---	---
MBR2000AA-1 **	0 / 0	4.9 / 4.9	15 / 15	---	---	---	---	---
HKR-03*	10.8 / 12.5	18 / 21	20 / 25	---	---	---	---	---
HKR-05* / 05C*	17.2 / 19.8	26 / 30	30 / 35	---	---	---	---	---
HKR-06*	21.7 / 25.0	32 / 36	35 / 40	---	---	---	---	---
HKR-08* / -08C*	25.3 / 29.2	36 / 41	40 / 45	---	---	---	---	---
HKR-10* / -10C*	34.3 / 39.6	48 / 54	50 / 60	---	---	---	---	---
HKA-15C*	34.3 / 39.6	48 / 54	50 / 60	17.2 / 19.8	21 / 25	25 / 25	69/79	70 / 80
HKA-20C*	34.3 / 39.6	48 / 54	50 / 60	34.3 / 39.6	43 / 49	45 / 50	91/104	100 / 110
^HKR3-15*	0 / 0	4.9 / 4.9	15 / 15	31.3 / 36.1	39 / 45.1	40 / 50	---	---
^HKR3-20*	0 / 0	4.9 / 4.9	15 / 15	40.7 / 46.9	51 / 59	60 / 60	---	---

¹ Minimum Circuit Ampacity @ 208 / 240 V

² Maximum Overcurrent Protection Device @ 208 / 240 V

* Revision level that may or may not be designated

C = Circuit Breaker Option (HKA meets the new UL1995 requirements for 15 and 20KW heaters)

^ Heat Kit requires three-phase power supply

— indicates Not Required

Note: All HKR ampacities noted above include air handler motor amps, excluding three-phase models.

ELECTRICAL DATA FOR DP13CM PACKAGED UNITS (BLOWER ONLY, HEAT MODE)

MODEL AND HEAT KIT USAGE	CIRCUIT #1		CIRCUIT #2		SINGLE-POINT KIT		ACTUAL KW / BTU@ 240V
	MCA ¹	MOP ²	MCA ¹	MOP ²	MCA ¹	MOP ²	
DP13CM3641A*	1.9	---	---	---	--	--	---
HKR-05*, HKR-05C*	21 / 25	25 / 25	---	---	25	40	4.75 / 16,200
HKR-08*, HKR-08C*	32 / 36	35 / 40	---	---	34 / 39	40 / 40	7.0 / 23,800
HKR-10*, HKR-10C*	43 / 49	45 / 50	---	---	45 / 52	60 / 60	9.5 / 32,400
HKP-15C*	43 / 49	45 / 50	21 / 25	25 / 25	66 / 76	70 / 80	14.25 / 48,600
DP13CM4841A*	7.3	---	---	---	--	--	---
HKR-05*, HKR-05C*	21 / 25	25 / 25	---	---	32	50	4.75 / 16,200
HKR-08*, HKR-08C*	32 / 36	35 / 40	---	---	38 / 40	50	7.0 / 23,800
HKR-10*, HKR-10C*	43 / 49	45 / 50	---	---	49 / 56	60 / 60	9.5 / 32,400
HKP-15C*	43 / 49	45 / 50	21 / 25	25 / 25	70 / 80	80 / 90	14.25 / 48,600
HKP-20C	43 / 49	45 / 50	43 / 49	45 / 50	92 / 105	100 / 110	19.0 / 64,800
DP13CM6041A*	9.5	---	---	---	--	--	---
HKR-05*, HKR-05C*	21 / 25	25 / 25	---	---	42	60	4.75 / 16,200
HKR-08*, HKR-08C*	32 / 36	35 / 40	---	---	42	60	7.0 / 23,800
HKR-10*, HKR-10C*	43 / 49	45 / 50	---	---	51 / 58	60 / 60	9.5 / 32,400
HKP-15C*	43 / 49	45 / 50	21 / 25	25 / 25	72 / 82	80 / 90	14.25 / 48,600
HKP-20C	43 / 49	45 / 50	43 / 49	45 / 50	93 / 107	100 / 110	19.0 / 64,800

¹ Minimum Circuit Ampacity @ 208 / 240 V

² Maximum Overcurrent Protection Device @ 208 / 240 V

* Revision level that may or may not be designated

C = Circuit breaker option

^ Heat Kit requires three-phase power supply

Note: HKP-15C* and HKP-20C* replace HKR-15C and HKR-20C respectively to meet new UL1995 requirements.

ELECTRICAL DATA FOR DP14CH PACKAGED UNITS (BLOWER ONLY, HEAT MODE)

MODEL AND HEAT KIT USAGE	CIRCUIT #1		CIRCUIT #2		SINGLE-POINT KIT		ACTUAL KW / BTU@ 240V
	MCA ¹	MOP ²	MCA ¹	MOP ²	MCA ¹	MOP ²	
DP14CH2441A*	1.9	---	---	---	--	--	---
HKR-05*, HKR-05C*	21 / 25	25 / 25	---	---	24 / 27	30 / 30	4.75 / 16,200
HKR-08*, HKR-08C*	32 / 36	35 / 40	---	---	33 / 38	40 / 40	7 / 23,800
HKR-10*, HKR-10C*	43 / 49	45 / 50	---	---	45 / 51	60 / 60	9.5 / 32,400
DP14CH3041A*	2.3	---	---	---	--	--	---
HKR-05*, HKR-05C*	21 / 25	25 / 25	---	---	24 / 27	30 / 30	4.75 / 16,200
HKR-08*, HKR-08C*	32 / 36	35 / 40	---	---	34 / 39	40 / 40	7 / 23,800
HKR-10*, HKR-10C*	43 / 49	45 / 50	---	---	45 / 52	60 / 60	9.5 / 32,400
HKP-15C*	43 / 49	45 / 50	21 / 25	25 / 25	67 / 77	70 / 80	14.25 / 48,600
DP14CH3641A*	2.3	---	---	---	--	--	---
HKR-05*, HKR-05C*	21 / 25	25 / 25	---	---	24 / 27	40 / 40	4.75 / 16,200
HKR-08*, HKR-08C*	32 / 36	35 / 40	---	---	34 / 39	40 / 40	7 / 23,800
HKR-10*, HKR-10C*	43 / 49	45 / 50	---	---	45 / 52	60 / 60	9.5 / 32,400
HKP-15C*	43 / 49	45 / 50	21 / 25	25 / 25	67 / 77	70 / 80	14.25 / 48,600
DP14CH4241A*	3.6	---	---	---	--	--	---
HKR-05*, HKR-05C*	21 / 25	25 / 25	---	---	27	40 / 40	4.75 / 16,200
HKR-08*, HKR-08C*	32 / 36	35 / 40	---	---	34 / 39	40 / 40	7 / 23,800
HKR-10*, HKR-10C*	43 / 49	45 / 50	---	---	46 / 52	60 / 60	9.5 / 32,400
HKP-15C*	43 / 49	45 / 50	21 / 25	25 / 25	68 / 78	70 / 80	14.25 / 48,600
HKP-20C	43 / 49	45 / 50	43 / 49	45 / 50	90 / 103	90 / 110	19.0 / 64,800
DP14CH4841A*	3.6	---	---	---	--	--	---
HKR-05*, HKR-05C*	21 / 25	25 / 25	---	---	29	45	4.75 / 16,200
HKR-08*, HKR-08C*	32 / 36	35 / 40	---	---	34 / 40	45	7 / 23,800
HKR-10*, HKR-10C*	43 / 49	45 / 50	---	---	46 / 53	60 / 60	9.5 / 32,400
HKP-15C*	43 / 49	45 / 50	21 / 25	25 / 25	68 / 78	70 / 80	14.25 / 48,600
HKP-20C	43 / 49	45 / 50	43 / 49	45 / 50	90 / 103	90 / 110	19.0 / 64,800
DP14CH6041A*	7.5	---	---	---	--	--	---
HKR-05*, HKR-05C*	21 / 25	25 / 25	---	---	37.3	60	4.75 / 16,200
HKR-08*, HKR-08C*	32 / 36	35 / 40	---	---	37/40	60	7 / 23,800
HKR-10*, HKR-10C*	43 / 49	45 / 50	---	---	48 / 54	60 / 60	9.5 / 32,400
HKP-15C*	43 / 49	45 / 50	21 / 25	25 / 25	70 / 80	80 / 90	14.25 / 48,600
HKP-20C	43 / 49	45 / 50	43 / 49	45 / 50	92 / 105	100 / 110	19.0 / 64,800

¹ Minimum Circuit Ampacity @ 208 / 240 V

² Maximum Overcurrent Protection Device @ 208 / 240 V

* Revision level that may or may not be designated

C = Circuit breaker option

^ Heat Kit requires three-phase power supply

NOTE: HKP-15C* and HKP-20C* replace HKR-15C and HKR-20C respectively to meet new UL1995 requirements.

ELECTRICAL DATA FOR DP13CH PACKAGED UNITS (BLOWER ONLY, HEAT MODE)

MODEL AND HEAT KIT USAGE	CIRCUIT #1		CIRCUIT #2		SINGLE-POINT KIT		ACTUAL KW / BTU@ 240V
	MCA ¹	MOP ²	MCA ¹	MOP ²	MCA ¹	MOP ²	
DP13CH2441A*	1.9	---	---	---	--	--	---
HKR-05*, HKR-05C*	21 / 25	25 / 25	---	---	24 / 27	25 / 30	4.75 / 16,200
HKR-08*, HKR-08C*	32 / 36	35 / 40	---	---	33 / 38	35 / 40	7 / 23,800
HKR-10*, HKR-10C*	43 / 49	45 / 50	---	---	45 / 51	50 / 60	9.5 / 32,400
DP13CH3041A*	2.3	---	---	---	--	--	---
HKR-05*, HKR-05C*	21 / 25	25 / 25	---	---	24 / 27	30 / 30	4.75 / 16,200
HKR-08*, HKR-08C*	32 / 36	35 / 40	---	---	34 / 39	40 / 40	7 / 23,800
HKR-10*, HKR-10C*	43 / 49	45 / 50	---	---	45 / 52	60 / 60	9.5 / 32,400
HKP-15C*	43 / 49	45 / 50	21 / 25	25 / 25	67 / 77	70 / 80	14.25 / 48,600
DP13CH3641A*	2.3	---	---	---	--	--	---
HKR-05*, HKR-05C*	21 / 25	25 / 25	---	---	24 / 27	40 / 40	4.75 / 16,200
HKR-08*, HKR-08C*	32 / 36	35 / 40	---	---	34 / 39	40 / 40	7 / 23,800
HKR-10*, HKR-10C*	43 / 49	45 / 50	---	---	45 / 52	60 / 60	9.5 / 32,400
HKP-15C*	43 / 49	45 / 50	21 / 25	25 / 25	67 / 77	70 / 80	14.25 / 48,600
DP13CH4241A*	3.6	---	---	---	--	--	---
HKR-05*, HKR-05C*	21 / 25	25 / 25	---	---	27	40 / 40	4.75 / 16,200
HKR-08*, HKR-08C*	32 / 36	35 / 40	---	---	34 / 39	40 / 40	7 / 23,800
HKR-10*, HKR-10C*	43 / 49	45 / 50	---	---	46 / 52	60 / 60	9.5 / 32,400
HKP-15C*	43 / 49	45 / 50	21 / 25	25 / 25	68 / 78	70 / 80	14.25 / 48,600
HKP-20C	43 / 49	45 / 50	43 / 49	45 / 50	90 / 103	90 / 110	19.0 / 64,800
DP13CH4841A*	3.6	---	---	---	--	--	---
HKR-05*, HKR-05C*	21 / 25	25 / 25	---	---	29	45	4.75 / 16,200
HKR-08*, HKR-08C*	32 / 36	35 / 40	---	---	34 / 40	45	7 / 23,800
HKR-10*, HKR-10C*	43 / 49	45 / 50	---	---	46 / 53	60 / 60	9.5 / 32,400
HKP-15C	43 / 49	45 / 50	21 / 25	25 / 25	68 / 78	70 / 80	14.25 / 48,600
HKP-20C	43 / 49	45 / 50	43 / 49	45 / 50	90 / 103	90 / 110	19.0 / 64,800
DP13CH6041A*	7.5	---	---	---	--	--	---
HKR-05*, HKR-05C*	21 / 25	25 / 25	---	---	40	60	4.75 / 16,200
HKR-08*, HKR-08C*	32 / 36	35 / 40	---	---	40	60	7 / 23,800
HKR-10*, HKR-10C*	43 / 49	45 / 50	---	---	48 / 54	60 / 60	9.5 / 32,400
HKP-15C	43 / 49	45 / 50	21 / 25	25 / 25	70 / 80	80 / 90	14.25 / 48,600
HKP-20C	43 / 49	45 / 50	43 / 49	45 / 50	92 / 105	100 / 110	19.0 / 64,800

¹ Minimum Circuit Ampacity @ 208 / 240 V

² Maximum Overcurrent Protection Device @ 208 / 240 V

* Revision level that may or may not be designated

C = Circuit breaker option

^ Heat Kit requires three-phase power supply

NOTE: HKP-15C* and HKP-20C* replace HKR-15C and HKR-20C respectively to meet new UL1995 requirements.

ELECTRICAL DATA FOR DP15HM PACKAGED UNITS (BLOWER ONLY, HEAT MODE)

MODEL AND HEAT KIT USAGE	CIRCUIT #1		CIRCUIT #2		SINGLE-POINT KIT		ACTUAL KW / BTU@ 240V
	MCA ¹	MOP ²	MCA ¹	MOP ²	MCA ¹	MOP ²	
DP15HM2441A*	5.4	---	---	---	--	--	---
HKR-05*, HKR-05C*	21 / 25	25 / 25	---	---	46	50	4.75 / 16,200
HKR-08*, HKR-08C*	32 / 36	35 / 40	---	---	58	60	7.0 / 23,800
HKR-10*, HKR-10C*	43 / 49	45 / 50	---	---	71	80	9.5 / 32,400
DP15HM3041A*	5.4	---	---	---	--	--	---
HKR-05*, HKR-05C*	21 / 25	25 / 25	---	---	48	50	4.75 / 16,200
HKR-08*, HKR-08C*	32 / 36	35 / 40	---	---	60	60	7.0 / 23,800
HKR-10*, HKR-10C*	43 / 49	45 / 50	---	---	73	80	9.5 / 32,400
HKP-15C*	43 / 49	45 / 50	21 / 25	25 / 25	97	100	14.25 / 48,600
DP15HM3641A*	5.4	---	---	---	--	--	---
HKR-05*, HKR-05C*	21 / 25	25 / 25	---	---	51	60	4.75 / 16,200
HKR-08*, HKR-08C*	32 / 36	35 / 40	---	---	63	70	7.0 / 23,800
HKR-10*, HKR-10C*	43 / 49	45 / 50	---	---	76	80	9.5 / 32,400
HKP-15C*	43 / 49	45 / 50	21 / 25	25 / 25	101	110	14.25 / 48,600
DP15HM4341A*	3.6	---	---	---	--	--	---
HKR-05*, HKR-05C*	21 / 25	25 / 25	---	---	51	60	4.75 / 16,200
HKR-08*, HKR-08C*	32 / 36	35 / 40	---	---	63	70	7.0 / 23,800
HKR-10*, HKR-10C*	43 / 49	45 / 50	---	---	76	80	9.5 / 32,400
HKP-15C*	43 / 49	45 / 50	21 / 25	25 / 25	101	110	14.25 / 48,600
DP15HM4941A*	3.6	---	---	---	--	--	---
HKR-05*, HKR-05C*	21 / 25	25 / 25	---	---	56	70	4.75 / 16,200
HKR-08*, HKR-08C*	32 / 36	35 / 40	---	---	67	80	7.00 / 23,800
HKR-10*, HKR-10C*	43 / 49	45 / 50	---	---	80	90	9.50 / 32,400
HKP-15C*	43 / 49	45 / 50	21 / 25	25 / 25	105	110	14.25 / 48,600
HKP-20C*	43 / 49	45 / 50	43 / 49	45 / 50	132	150	19.0 / 64,800
DP15HM6041A*	8.8	---	---	---	--	--	---
HKR-05*, HKR-05C*	21 / 25	25 / 25	---	---	67	80	4.75 / 16,200
HKR-08*, HKR-08C*	32 / 36	35 / 40	---	---	79	90	7.0 / 23,800
HKR-10*, HKR-10C*	43 / 49	45 / 50	---	---	92	100	9.5 / 32,400
HKP-15C*	43 / 49	45 / 50	21 / 25	25 / 25	116	125	14.25 / 48,600
HKP-20C*	43 / 49	45 / 50	43 / 49	45 / 50	144	150	19.0 / 64,800

¹ Minimum Circuit Ampacity @ 208 / 240 V

² Maximum Overcurrent Protection Device @ 208 / 240 V

* Revision level that may or may not be designated

C = Circuit breaker option

^ Heat Kit requires three-phase power supply

Note: HKP-15C* and HKP-20C* replace HKR-15C and HKR-20C respectively to meet new UL1995 requirements.

ELECTRICAL DATA FOR DP14HH PACKAGED UNITS (BLOWER ONLY, HEAT MODE)

MODEL AND HEAT KIT USAGE	CIRCUIT #1		CIRCUIT #2		SINGLE-POINT KIT		ACTUAL KW / BTU@ 240V
	MCA ¹	MOP ²	MCA ¹	MOP ²	MCA ¹	MOP ²	
DP14HH2441A*	1.9	---	---	---	--	--	---
HKR-05*, HKR-05C*	21 / 25	25 / 25	---	---	43	50	4.75 / 16,200
HKR-08*, HKR-08C*	32 / 36	35 / 40	---	---	55	60	7 / 23,800
HKR-10*, HKR-10C*	43 / 49	45 / 50	---	---	68	70	9.5 / 32,400
DP14HH3041A*	2.3	---	---	---	--	--	---
HKR-05*, HKR-05C*	21 / 25	25 / 25	---	---	45	50	4.75 / 16,200
HKR-08*, HKR-08C*	32 / 36	35 / 40	---	---	57	60	7 / 23,800
HKR-10*, HKR-10C*	43 / 49	45 / 50	---	---	70	80	9.5 / 32,400
HKP-15C*	43 / 49	45 / 50	21 / 25	25 / 25	95	100	14.25 / 48,600
DP14HH3641A*	2.3	---	---	---	--	--	---
HKR-05*, HKR-05C*	21 / 25	25 / 25	---	---	49	60	4.75 / 16,200
HKR-08*, HKR-08C*	32 / 36	35 / 40	---	---	61	70	7 / 23,800
HKR-10*, HKR-10C*	43 / 49	45 / 50	---	---	74	80	9.5 / 32,400
HKP-15C*	43 / 49	45 / 50	21 / 25	25 / 25	98	100	14.25 / 48,600
DP14HH4241A*	3.6	---	---	---	--	--	---
HKR-05*, HKR-05C*	21 / 25	25 / 25	---	---	51	60	4.75 / 16,200
HKR-08*, HKR-08C*	32 / 36	35 / 40	---	---	63	70	7 / 23,800
HKR-10*, HKR-10C*	43 / 49	45 / 50	---	---	76	80	9.5 / 32,400
HKP-15C*	43 / 49	45 / 50	21 / 25	25 / 25	101	110	14.25 / 48,600
HKP-20C*	43 / 49	45 / 50	43 / 49	45 / 50	128	150	19.0 / 64,800
DP14HH4841A*	3.6	---	---	---	--	--	---
HKR-05*, HKR-05C*	21 / 25	25 / 25	---	---	54	60	4.75 / 16,200
HKR-08*, HKR-08C*	32 / 36	35 / 40	---	---	66	70	7 / 23,800
HKR-10*, HKR-10C*	43 / 49	45 / 50	---	---	79	80	9.5 / 32,400
HKP-15C*	43 / 49	45 / 50	21 / 25	25 / 25	103	110	14.25 / 48,600
HKP-20C*	43 / 49	45 / 50	43 / 49	45 / 50	131	150	19.0 / 64,800
DP14HH6041A*	7.5	---	---	---	--	--	---
HKR-05*, HKR-05C*	21 / 25	25 / 25	---	---	62	80	4.75 / 16,200
HKR-08*, HKR-08C*	32 / 36	35 / 40	---	---	74	90	7 / 23,800
HKR-10*, HKR-10C*	43 / 49	45 / 50	---	---	87	100	9.5 / 32,400
HKP-15C*	43 / 49	45 / 50	21 / 25	25 / 25	112	125	14.25 / 48,600
HKP-20C*	43 / 49	45 / 50	43 / 49	45 / 50	139	150	19.0 / 64,800

¹ Minimum Circuit Ampacity @ 208 / 240 V

² Maximum Overcurrent Protection Device @ 208 / 240 V

* Revision level that may or may not be designated

C = Circuit breaker option

^ Heat Kit requires three-phase power supply

Note: HKP-15C* and HKP-20C* replace HKR-15C and HKR-20C respectively to meet new UL1995 requirements.

ELECTRICAL DATA FOR DP13HM PACKAGED UNITS (BLOWER ONLY, HEAT MODE)

MODEL AND HEAT KIT USAGE	CIRCUIT #1		CIRCUIT #2		SINGLE-POINT KIT		ACTUAL KW / BTU@ 240V
	MCA ¹	MOP ²	MCA ¹	MOP ²	MCA ¹	MOP ²	
DP13HM2441A*	1.9	---	---	---	--	--	---
HKR-05*, HKR-05C*	21 / 25	25 / 25	---	---	44	50	4.75 / 16,200
HKR-08*, HKR-08C*	32 / 36	35 / 40	---	---	55	60	7.0 / 23,800
HKR-10*, HKR-10C*	43 / 49	45 / 50	---	---	68	70	9.5 / 32,400
DP13HM3041A*	1.9	---	---	---	--	--	---
HKR-05*, HKR-05C*	21 / 25	25 / 25	---	---	48	50	4.75 / 16,200
HKR-08*, HKR-08C*	32 / 36	35 / 40	---	---	59	60	7.0 / 23,800
HKR-10*, HKR-10C*	43 / 49	45 / 50	---	---	72	80	9.5 / 32,400
HKP-15C*	43 / 49	45 / 50	21 / 25	25 / 25	97	100	14.25 / 48,600
DP13HM3641A*	1.9	---	---	---	--	--	---
HKR-05*, HKR-05C*	21 / 25	25 / 25	---	---	50	60	4.75 / 16,200
HKR-08*, HKR-08C*	32 / 36	35 / 40	---	---	62	70	7.0 / 23,800
HKR-10*, HKR-10C*	43 / 49	45 / 50	---	---	75	80	9.5 / 32,400
HKP-15C*	43 / 49	45 / 50	21 / 25	25 / 25	100	100	14.25 / 48,600
DP13HM4241A*	3.6	---	---	---	--	--	---
HKR-05*, HKR-05C*	21 / 25	25 / 25	---	---	52	60	4.75 / 16,200
HKR-08*, HKR-08C*	32 / 36	35 / 40	---	---	63	70	7.0 / 23,800
HKR-10*, HKR-10C*	43 / 49	45 / 50	---	---	76	80	9.5 / 32,400
HKP-15C*	43 / 49	45 / 50	21 / 25	25 / 25	101	110	14.25 / 48,600
DP13HM4841A*	7.3	---	---	---	--	--	---
HKR-05*, HKR-05C*	21 / 25	25 / 25	---	---	59	70	4.75 / 16,200
HKR-08*, HKR-08C*	32 / 36	35 / 40	---	---	71	80	7.0 / 23,800
HKR-10*, HKR-10C*	43 / 49	45 / 50	---	---	84	90	9.5 / 32,400
HKP-15C*	43 / 49	45 / 50	21 / 25	25 / 25	109	110	14.25 / 48,600
HKP-20C*	43 / 49	45 / 50	43 / 49	45 / 50	136	150	19.0 / 64,800
DP13HM6041A*	9.5	---	---	---	--	--	---
HKR-05*, HKR-05C*	21 / 25	25 / 25	---	---	67	80	4.75 / 16,200
HKR-08*, HKR-08C*	32 / 36	35 / 40	---	---	78	90	7.0 / 23,800
HKR-10*, HKR-10C*	43 / 49	45 / 50	---	---	91	100	9.5 / 32,400
HKP-15C*	43 / 49	45 / 50	21 / 25	25 / 25	116	125	14.25 / 48,600
HKP-20C*	43 / 49	45 / 50	43 / 49	45 / 50	144	150	19.0 / 64,800

¹ Minimum Circuit Ampacity @ 208 / 240 V

² Maximum Overcurrent Protection Device @ 208 / 240 V

* Revision level that may or may not be designated

C = Circuit breaker option

^ Heat Kit requires three-phase power supply

NOTE: HKP-15C* and HKP-20C* replace HKR-15C and HKR-20C respectively to meet new UL1995 requirements.

ELECTRICAL DATA FOR DP13HH PACKAGED UNITS (BLOWER ONLY, HEAT MODE)

MODEL AND HEAT KIT USAGE	CIRCUIT #1		CIRCUIT #2		SINGLE-POINT KIT		ACTUAL KW / BTU@ 240V
	MCA ¹	MOP ²	MCA ¹	MOP ²	MCA ¹	MOP ²	
DP13HH2441A*	1.9	---	---	---	--	--	---
HKR-05*, HKR-05C*	21 / 25	25 / 25	---	---	43	50	4.75 / 16,200
HKR-08*, HKR-08C*	32 / 36	35 / 40	---	---	55	60	7 / 23,800
HKR-10*, HKR-10C*	43 / 49	45 / 50	---	---	68	70	9.5 / 32,400
DP13HH3041A*	2.3	---	---	---	--	--	---
HKR-05*, HKR-05C*	21 / 25	25 / 25	--	--	45	50	4.75 / 16,200
HKR-08*, HKR-08C*	32 / 36	35 / 40	--	--	57	60	7 / 23,800
HKR-10*, HKR-10C*	43 / 49	45 / 50	--	--	70	80	9.5 / 32,400
HKP-15C*	43 / 49	45 / 50	21 / 25	25 / 25	95	100	14.25 / 48,600
DP13HH3641A*	2.3	---	---	---	--	--	---
HKR-05*, HKR-05C*	21 / 25	25 / 25	---	---	49	60	4.75 / 16,200
HKR-08*, HKR-08C*	32 / 36	35 / 40	---	---	61	70	7 / 23,800
HKR-10*, HKR-10C*	43 / 49	45 / 50	---	---	74	80	9.5 / 32,400
HKP-15C*	43 / 49	45 / 50	21 / 25	25 / 25	98	100	14.25 / 48,600
DP13HH4241A*	3.6	---	---	---	--	--	---
HKR-05*, HKR-05C*	21 / 25	25 / 25	--	--	51	60	4.75 / 16,200
HKR-08*, HKR-08C*	32 / 36	35 / 40	--	--	63	70	7 / 23,800
HKR-10*, HKR-10C*	43 / 49	45 / 50	--	--	76	80	9.5 / 32,400
HKP-15C*	43 / 49	45 / 50	21 / 25	25 / 25	101	110	14.25 / 48,600
HKP-20C*	43 / 49	45 / 50	43 / 49	45 / 50	128	150	19.0 / 64,800
DP13HH4841A*	3.6	---	---	---	--	--	---
HKR-05*, HKR-05C*	21 / 25	25 / 25	---	---	54	60	4.75 / 16,200
HKR-08*, HKR-08C*	32 / 36	35 / 40	---	---	66	70	7 / 23,800
HKR-10*, HKR-10C*	43 / 49	45 / 50	---	---	79	80	9.5 / 32,400
HKP-15C*	43 / 49	45 / 50	21 / 25	25 / 25	103	110	14.25 / 48,600
HKP-20C*	43 / 49	45 / 50	43 / 49	45 / 50	131	150	19.0 / 64,800
DP13HH6041A*	7.5	---	---	---	--	--	---
HKR-05*, HKR-05C*	21 / 25	25 / 25	---	---	65	80	4.75 / 16,200
HKR-08*, HKR-08C*	32 / 36	35 / 40	---	---	77	90	7 / 23,800
HKR-10*, HKR-10C*	43 / 49	45 / 50	---	---	90	100	9.5 / 32,400
HKP-15C*	43 / 49	45 / 50	21 / 25	25 / 25	114	125	14.25 / 48,600
HKP-20C*	43 / 49	45 / 50	43 / 49	45 / 50	142	150	19.0 / 64,800

¹ Minimum Circuit Ampacity @ 208 / 240 V

² Maximum Overcurrent Protection Device @ 208 / 240 V

* Revision level that may or may not be designated

C = Circuit breaker option

^ Heat Kit requires three-phase power supply

NOTE: HKP-15C* and HKP-20C* replace HKR-15C and HKR-20C respectively to meet new UL1995 requirements.

NOTES

NOTES
