

ARPT SERIES

MULTI-POSITION,
 MULTI-SPEED AIR HANDLER

WITH INTERNAL TXV AND PSC MOTOR

2 TO 5 TONS



Contents

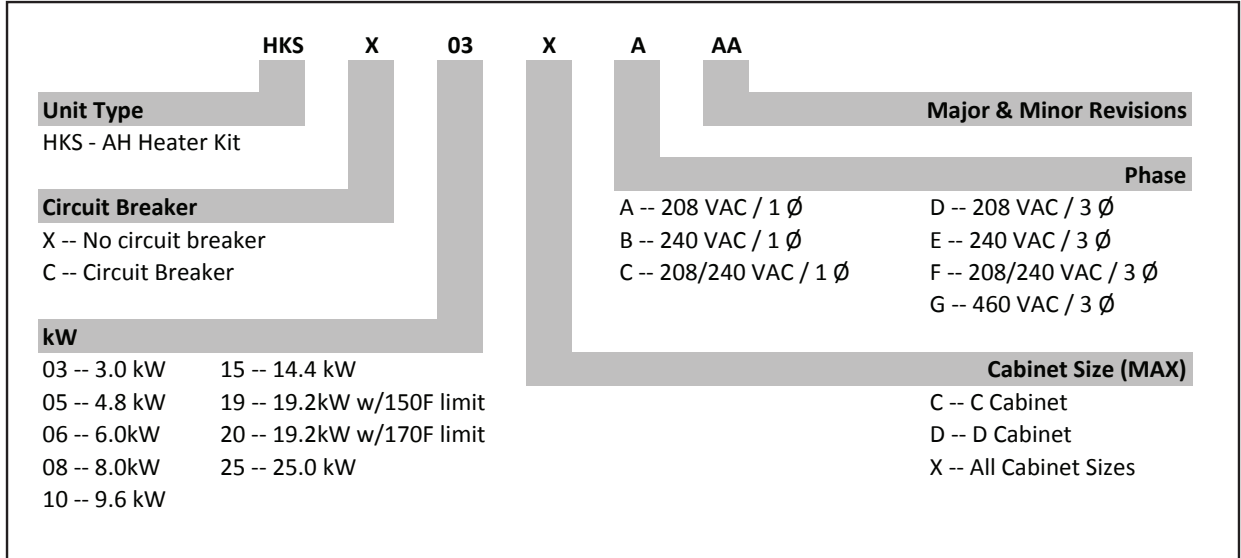
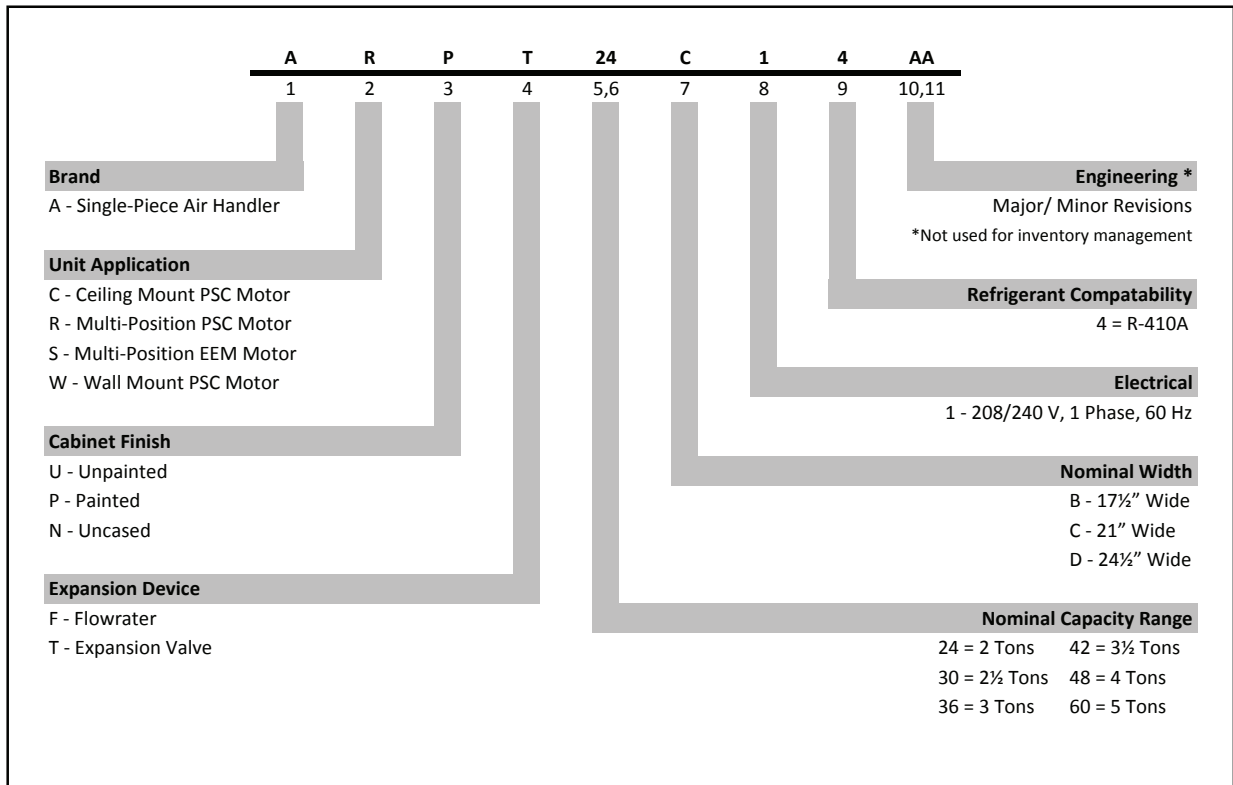
Air Handler Nomenclature	2
Heater Kit Nomenclature	2
Product Specifications	3
Dimensions	4
Airflow Data	5
Heat Kit Data.....	6
Wiring Diagram	8
Accessories	11

Product Features

- Internal factory-installed thermal expansion valves for cooling and heat pump applications
- Direct drive, multi-speed PSC blower motor
- All-aluminum evaporator coil
- Coil mounting track for quick repositioning
- Cabinet air leakage less than 2.0% at 1.0 inch H₂O when tested in accordance with ASHRAE standard 193
- Cabinet air leakage less than 1.4% at 0.5 inch H₂O when tested in accordance with ASHRAE standard 193
- 3 kW – 25 kW electric heater kits
- AHRI certified; ETL listed
- 3 kW – 25 kW electric heater kits
- Rigid SmartFrame™ Cabinet
- Horizontal or vertical configuration capabilities
- 21" depth for easier attic access
- DecaBDE-free thermoplastic drain pan with secondary drain connections
- Screw-less sides and back helps to reduce condensation when installed in humid locations
- Foil-faced insulation covers the internal casing to reduce cabinet condensation
- Galvanized, leather grain-embossed finish
- Glue-less cabinet insulation retention
- Tool-less filter access

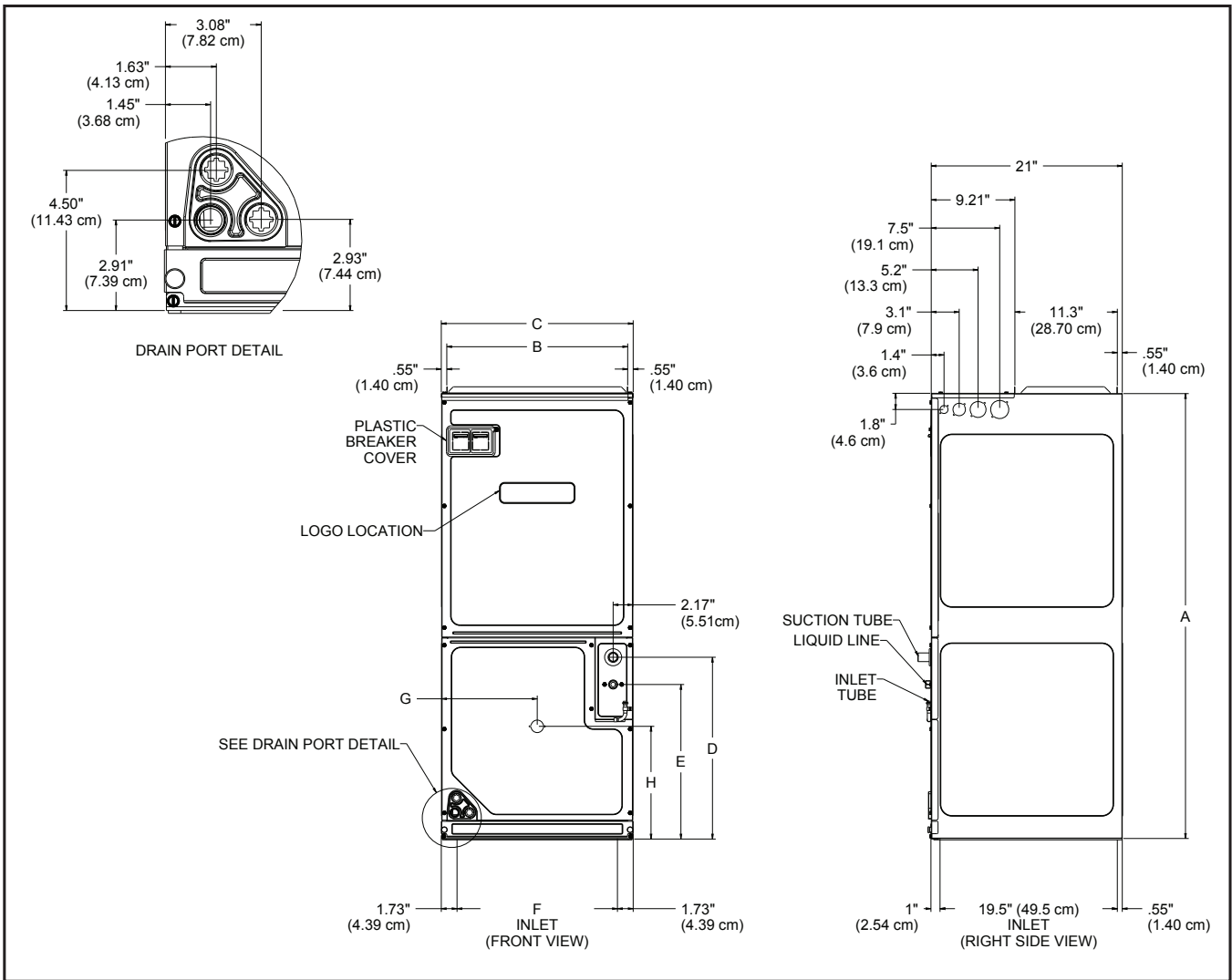


* Complete warranty details available from your local dealer or at www.amana-hac.com. To receive the 10-Year Parts Limited Warranty, online registration must be completed within 60 days of installation. Online registration is not required in California or Québec.



	ARPT 24B14*	ARPT 30B14*	ARPT 36C14*	ARPT 36D14*	ARPT 42D14*	ARPT 48D14*	ARPT 60D14*
NOMINAL RATINGS							
Cooling (BTU/h)	24,000	30,000	36,000	36,000	42,000	48,000	60000
BLOWER							
Diameter	9½"	9½"	10⅝"	10⅝"	10⅝"	12"	12"
Width	6"	6"	8"	10⅝"	10⅝"	10⅝"	10⅝"
COIL CONNECTIONS							
Liquid	⅜"	⅜"	⅜"	⅜"	⅜"	⅜"	⅜"
Suction	¾"	¾"	⅞"	⅞"	⅞"	⅞"	⅞"
Coil Drain Connect (FPT)	¾"	¾"	¾"	¾"	¾"	¾"	¾"
ELECTRICAL DATA							
Voltage	208/230	208/230	208/230	208/230	208/230	208/230	208/230
Min Circuit Ampacity	3/3	3/3	4/4	4/4	5/5	5/5	6/6
Max. Overcurrent Device (Amps)	15/15	15/15	15/15	15/15	15/15	15/15	15/15
Minimum VAC	197	197	197	197	197	197	197
Maximum VAC	253	253	253	253	253	253	253
Blower Motor							
Full Load Amps (FLA)	1.9	1.9	3.1	3.0	3.5	3.5	4.6
Horsepower (HP)	⅓	⅓	⅓	½	½	½	¾
SHIP WEIGHT (LBS.)	99	110	130	130	147	157	159

NOTE: Minimum Circuit Ampacity (MCA) and Maximum Overcurrent Protection (MOP) for blower without supplemental heat installed.
Refer to unit nameplate and/or Heat Kit Data for specification with approved accessory heaters installed.



MODEL	A"	B"	C"	D"	E"	F"	G"	H"
ARPT24B14*	45	16 ³ / ₈	17 ¹ / ₂	18	15	14 ¹ / ₄	8 ⁷ / ₈	12
ARPT30B14*	45	16 ³ / ₈	17 ¹ / ₂	18	15	14 ¹ / ₄	8 ⁷ / ₈	12
ARPT36C14*	49	20	21	20	17	17 ³ / ₄	10 ¹ / ₂	12 ³ / ₈
ARPT36D14*	58	23 ³ / ₈	24 ¹ / ₂	28 ¹ / ₄	25 ¹ / ₄	21 ¹ / ₄	12 ³ / ₈	12 ³ / ₈
ARPT42D14*	58	23 ³ / ₈	24 ¹ / ₂	28 ¹ / ₄	25 ¹ / ₄	21 ¹ / ₄	12 ³ / ₈	12 ³ / ₈
ARPT48D14*	58	23 ³ / ₈	24 ¹ / ₂	28 ¹ / ₄	25 ¹ / ₄	21 ¹ / ₄	12 ³ / ₈	12 ³ / ₈
ARPT60D14*	58	23 ³ / ₈	24 ¹ / ₂	28 ¹ / ₄	25 ¹ / ₄	21 ¹ / ₄	12 ³ / ₈	12 ³ / ₈

MODEL	BLOWER SPEED	STATIC PRESSURE (IN W.C) AIRFLOW (CFM)						
		0.1	0.2	0.3	0.4	0.5	0.6	0.7
ARPT24B14	High	1,185	1,125	1,065	1,010	985	910	780
	Medium	900	850	825	785	715	670	610
	Low	630	605	560	525	495	445	355
ARPT30B14	High	1,145	1,085	1,020	950	900	845	765
	Medium	870	820	775	745	705	655	580
	Low	615	585	565	535	490	435	345
ARPT36C14	High	1,580	1,515	1,445	1,395	1,345	1,240	1,155
	Medium	1,385	1,350	1,300	1,250	1,170	1,095	1,005
	Low	1,260	1,205	1,175	1,105	1,040	975	865
ARPT36D14	High	1,815	1,770	1,705	1,640	1,555	1,450	1,355
	Medium	1,580	1,525	1,485	1,420	1,350	1,275	1,165
	Low	1,220	1,180	1,140	1,085	1,030	950	865
ARPT42D14	High	1,990	1,915	1,810	1,765	1,690	1,585	1,435
	Medium	1,655	1,605	1,555	1,480	1,295	1,200	1,060
	Low	1,480	1,420	1,350	1,290	1,185	1,100	1,045
ARPT48D14	High	1,960	1,905	1,845	1,780	1,715	1,645	1,570
	Medium	1,600	1,545	1,495	1,435	1,360	1,290	1,215
	Low	1,395	1,340	1,280	1,220	1,150	1,090	1,020
ARPT60D14	High	2,205	2,140	2,080	2,010	1,945	1,870	1,795
	Medium	1,985	1,935	1,865	1,815	1,755	1,695	1,635
	Low	1,600	1,555	1,505	1,455	1,405	1,345	1,295

NOTES

- The chart is for information only. For satisfactory operation, external static pressure must not exceed value shown on rating plate.
- Use the CFM adjustment factors of .98 for horizontal left, .95 for horizontal right & .96 for downflow orientations.
- Airflow data indicated is at 230V without air filter in place.
- Shaded area indicates ranges in excess of maximum recommended design external static pressure.

HEAT KIT DATA

MODELS	CIRCUIT 1			CIRCUIT 2			SINGLE-POINT KIT	
	AMPS	MCA ¹	MOP ²	AMPS	MCA ¹	MOP ²	MCA ¹	MOP ²
ARPT24B14AC	0/0	2.4/2.4	15/15	---	---	---	---	---
HKS*03XC*	10.8/12.5	16/18	20/20	---	---	---	---	---
HKS*05XC*	17.3/20	24/27	25/30	---	---	---	---	---
HKS*06XC*	21.7/25	29/34	30/35	---	---	---	---	---
HKS*08XC*	28.9/33.3	38/44	40/45	---	---	---	---	---
HKS*10XC*	34.7/40	46/52	50/60	---	---	---	---	---
HKSC15*##	34.7/40	46/52	50/60	17.3/20	22/25	25/25	67/77	70/80
ARPT30B14AC	0/0	2.4/2.4	15/15	---	---	---	---	---
HKS*03XC*	10.8/12.5	16/18	20/20	---	---	---	---	---
HKS*05XC*	17.3/20	24/27	25/30	---	---	---	---	---
HKS*06XC*	21.7/25	29/34	30/35	---	---	---	---	---
HKS*08XC*	28.9/33.3	38/44	40/45	---	---	---	---	---
HKS*10XC*	34.7/40	46/52	50/60	---	---	---	---	---
HKSC15*##	34.7/40	46/52	50/60	17.3/20	22/25	25/25	67/77	70/80
ARPT36C14AC	0/0	4/4	15/15	---	---	---	---	---
HKS*03XC*	10.8/12.5	17/20	20/20	---	---	---	---	---
HKS*05XC*	17.3/20	26/29	30/30	---	---	---	---	---
HKS*06XC*	21.7/25	31/35.1	35/40	---	---	---	---	---
HKS*08XC*	28.9/33.3	40/46	45/50	---	---	---	---	---
HKS*10XC*	34.7/40	47/54	50/60	---	---	---	---	---
HKSX15XF*	0/0	4/4	15/15	30.0/34.6	38/43	40/45	---	---
HKSX20XF*	0/0	4/4	15/15	38/43	47/54	50/60	---	---
HKSC15*##	34.7/40	47/54	50/60	17.3/20	22/25	25/25	69/79	70/80
HKSC19C##	34.7/40	47/54	50/60	34.7/40	43/50	45/50	91/104	100/110
HKSC15XF*	0/0	4/4	15/15	30/34.6	38/43	40/45	---	---
HKSC20XF*	0/0	4/4	15/15	38/43	47/54	50/60	---	---
ARPT36D14AC	0/0	4/4	15/15	---	---	---	---	---
HKS*03XC*	10.8/12.5	17/19	20/20	---	---	---	---	---
HKS*05XC*	17.3/20	25/29	30/30	---	---	---	---	---
HKS*06XC*	21.7/25	31/35	35/35	---	---	---	---	---
HKS*08XC*	28.9/33.3	40/45.4	40/50	---	---	---	---	---
HKS*10XC*	34.7/40	47/54	50/60	---	---	---	---	---
HKSX15XF*	0/0	4/4	15/15	30/34.6	38/43	40/45	---	---
HKSX20XF*	0/0	4/4	15/15	38/43	47/54	50/60	---	---
HKSC15*##	34.7/40	47/54	50/60	17.3/20	22/25	25/25	69/79	70/80
HKSC20D##	34.7/40	47/54	50/60	34.7/40	43/50	45/50	90/104	100/110
HKSC15XF*	0/0	4/4	15/15	30/34.6	38/43	40/45	---	---
HKSC20XF*	0/0	4/4	15/15	38/43	47/54	50/60	---	---

HEATING KW CORRECTION FACTOR

SUPPLY VOLTAGE	240	230	220	210	208
CORRECTION FACTOR	1.00	0.92	0.84	0.77	0.75

Multiply the 240-volt heating capacity by correction factors.

MODELS	CIRCUIT 1			CIRCUIT 2			SINGLE-POINT KIT	
	AMPS	MCA ¹	MOP ²	AMPS	MCA ¹	MOP ²	MCA ¹	MOP ²
ARPT42D14AC	0/0	4/4	15/15	---	---	---	---	---
HKS*03XC*	10.8/12.5	18/20	20/20	---	---	---	---	---
HKS*05XC*	17.3/20	26/29	30/30	---	---	---	---	---
HKS*06XC*	21.7/25	31/36	35/40	---	---	---	---	---
HKS*08XC*	28.9/33.3	40.5/46	45/50	---	---	---	---	---
HKS*10XC*	34.7/40	48/54	50/60	---	---	---	---	---
HKSX15XF*	0/0	4/4	15/15	30/34.6	38/43	40/45	---	---
HKSX20XF*	0/0	4/4	15/15	38/43	47/54	50/60	---	---
HKSC15*##	34.7/40	48/54	50/60	17.3/20	22/25	25/30	69/79	70/80
HKSC20D##	34.7/40	48/54	50/60	34.7/40	43/50	45/50	91/104	100/110
HKSC15XF*	0/0	4/4	15/15	30/34.6	38/43	40/50	---	---
HKSC20XF*	0/0	4/4	15/15	38/43	47/54	50/60	---	---
ARPT48D14AC	0/0	4/4	15/15	---	---	---	---	---
HKS*03XC*	10.8/12.5	18/20	20/20	---	---	---	---	---
HKS*05XC*	17.3/20	26/29	30/30	---	---	---	---	---
HKS*06XC*	21.7/25	31/36	35/40	---	---	---	---	---
HKS*08XC*	28.9/33.3	40.5/46	45/50	---	---	---	---	---
HKS*10XC*	34.7/40	48/54	50/60	---	---	---	---	---
HKSX15XF*	0/0	4/4	15/15	30/34.6	38/43	40/45	---	---
HKSX20XF*	0/0	4/4	15/15	38/43	47/54	50/60	---	---
HKSC15*##	34.7/40	48/54	50/60	17.3/20	22/25	25/25	69/79	70/80
HKSC20D##	34.7/40	48/54	50/60	34.7/40	43/50	45/50	91/104	100/110
HKSC15XF*	0/0	4/4	15/15	30/34.6	38/43	40/45	---	---
HKSC20XF*	0/0	4/4	15/15	38/43	47/54	50/60	---	---
ARPT60D14AC	0/0	6/6	15/15	---	---	---	---	---
HKS*03XC*	10.8/12.5	19/21	20/25	---	---	---	---	---
HKS*05XC*	17.3/20	27/31	30/35	---	---	---	---	---
HKS*06XC*	21.7/25	33/37	35/40	---	---	---	---	---
HKS*08XC*	28.9/33.3	42/47	45/50	---	---	---	---	---
HKS*10XC*	34.7/40	49/56	50/60	---	---	---	---	---
HKSX15XF*	0/0	6/6	15/15	30/34.6	38/43	40/45	---	---
HKSX20XF*	0/0	6/6	15/15	38/43	47/54	50/60	---	---
HKSC15*##	34.7/40	49/56	50/60	17.3/20	22/25	25/25	71/81	80/90
HKSC20D##	34.7/40	49/56	50/60	34.7/40	43/50	45/50	92/106	100/110
HKSC15XF*	0/0	6/6	15/15	30/34.6	38/43	40/45	---	---
HKSC20XF*	0/0	6/6	15/15	38/43	47/54	50/60	---	---
HKSC25DC*	52/60	71/81	80/90	35/40	43/50	45/50	114/131	125/150

All ampacities noted above include air handler motor amps

Circuit 1: Single-phase for Air Handlers / Circuit 2: Three-phase for HKR3 Heater Kits

¹ Minimum Circuit Ampacity (Heater Amps + Motor Amps) X 1.25

² Maximum Overcurrent Protection = 2.25 X Motor Amps + Heater Amps

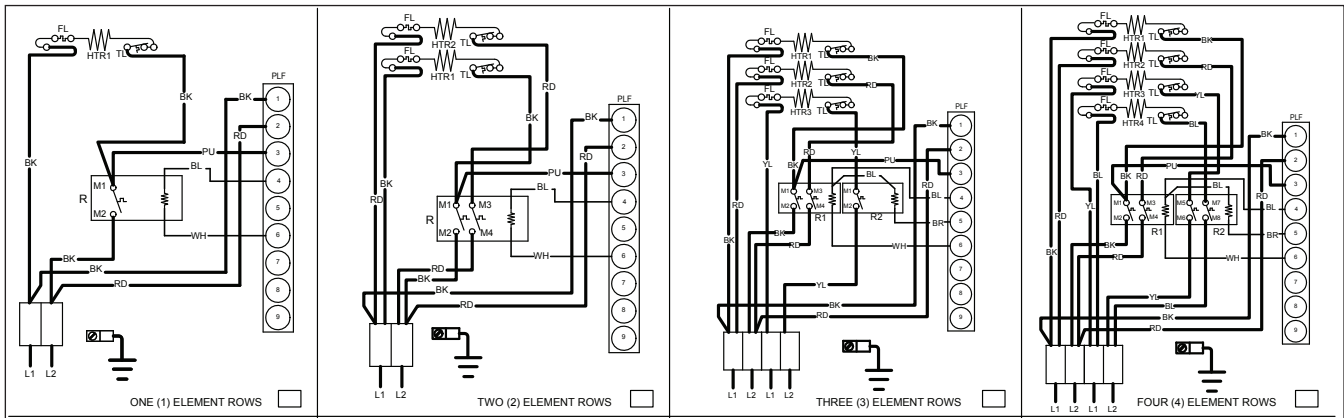
* Revision level that may or may not be designated

-C = Circuit Breaker Option

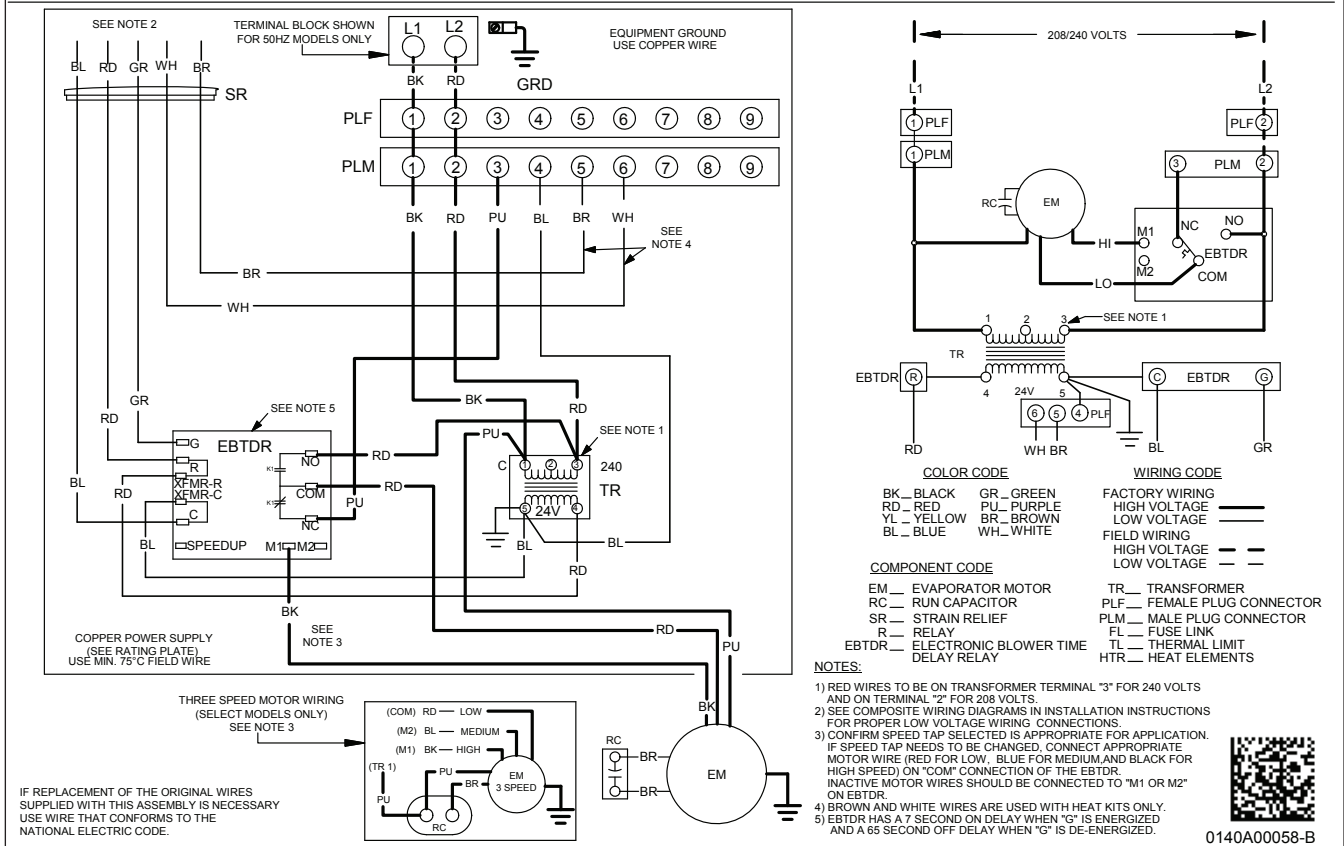
-- indicates Not Required

- Only applicable when HKA kits are included in table
HKA meets the new UL1995 requirements for 15 and 2kW heaters
- MBVC and MBR models

WIRING DIAGRAM – AIR HANDLER



NOTE: WHEN INSTALLING HEATER KIT, ENSURE SPEED TAP IS NOT BELOW MINIMUM BLOWER SPEED (MBS) SPECIFIED FOR THE AIR HANDLER/HEATER KIT COMBINATION ON THIS UNIT'S SERIAL PLATE. AFTER INSTALLING OPTIONAL HEAT KIT, MARK A "X" IN THE PROVIDED ABOVE. MARK ACCORDING TO THE NUMBER OF HEATER ELEMENT ROWS INSTALLED. NO MARK INDICATES NO HEAT KIT INSTALLED. 5 ELEMENT ROWS DATA SUPPLIED WITH HEATER KIT.

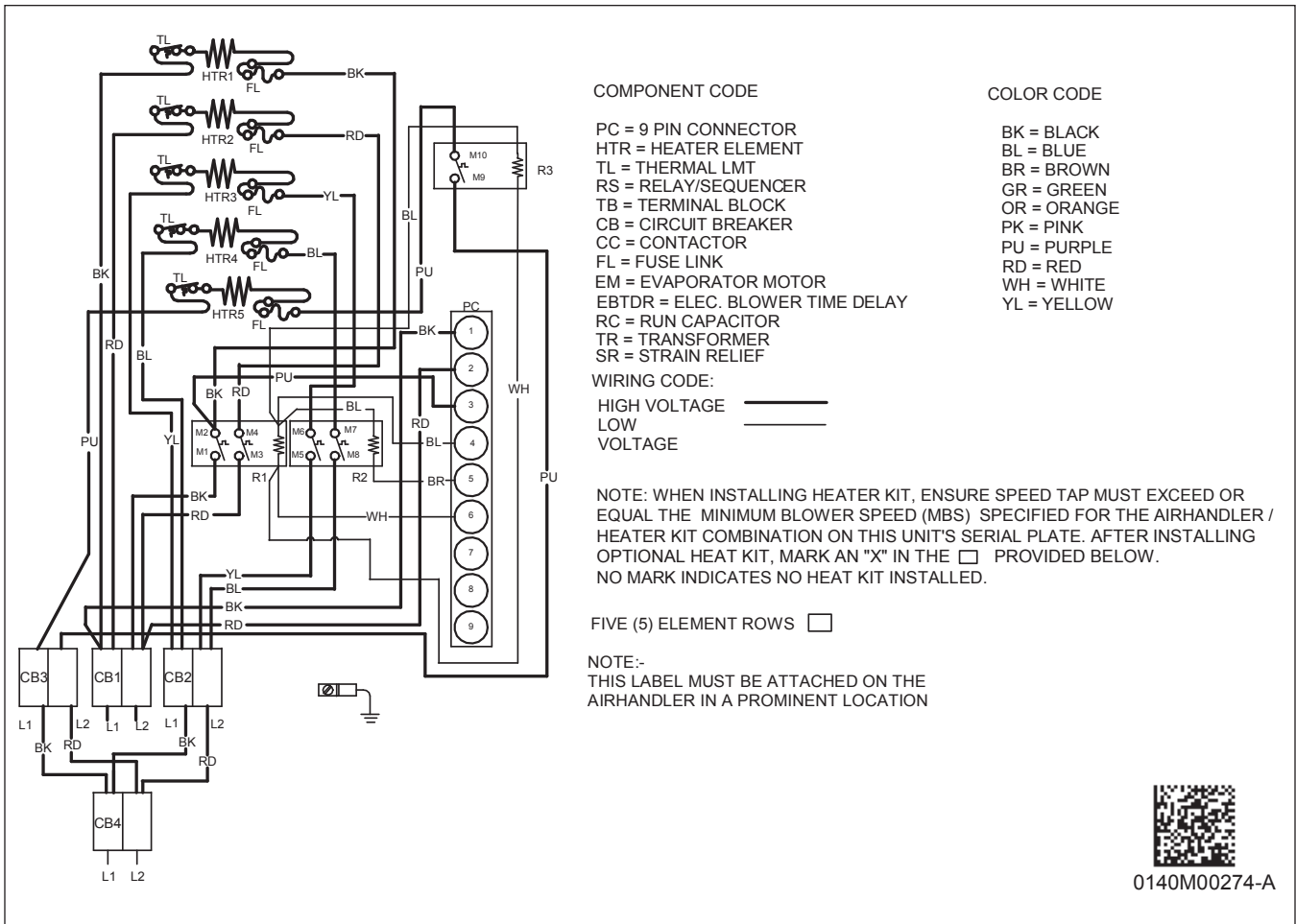


Note: The five element, 25 kW heater kit is not SHOWN ABOVE.

Wiring is subject to change. Always refer to the wiring diagram on the unit for the most up-to-date wiring.

WARNING

High Voltage: Disconnect all power before servicing or installing this unit. Multiple power sources may be present. Failure to do so may cause property damage, personal injury, or death.

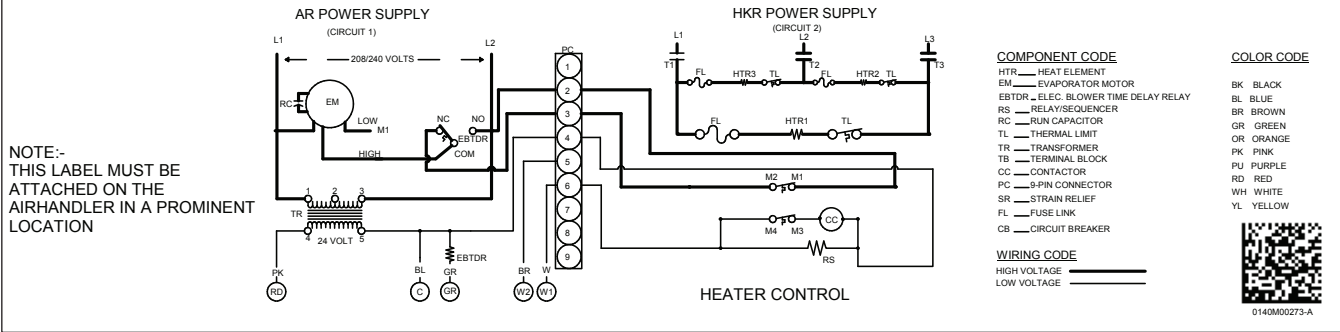
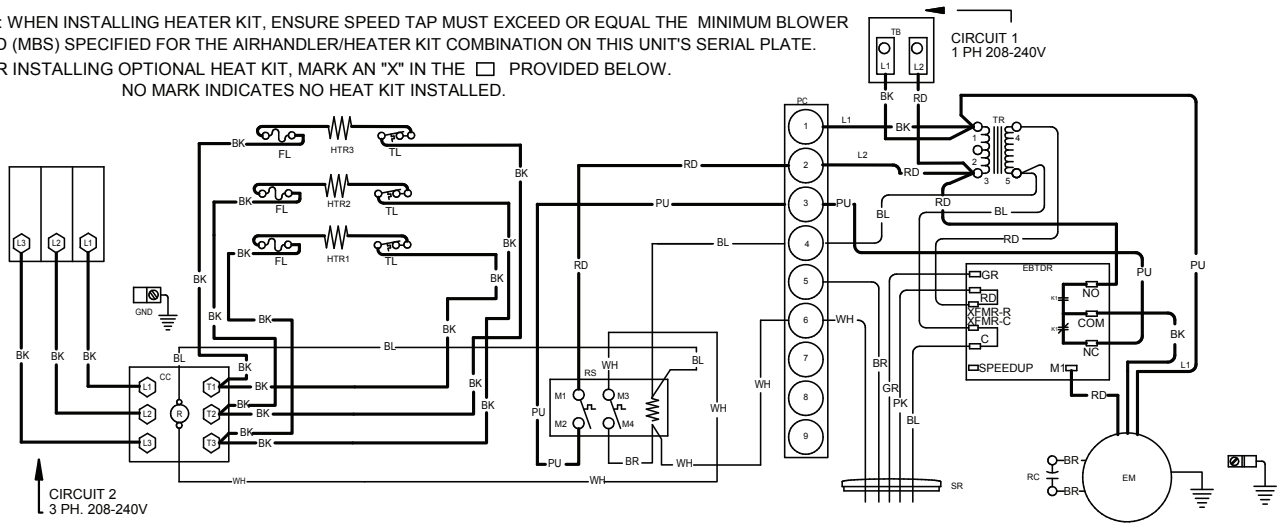


Wiring is subject to change. Always refer to the wiring diagram on the unit for the most up-to-date wiring.

	WARNING	<p>High Voltage: Disconnect all power before servicing or installing this unit. Multiple power sources may be present. Failure to do so may cause property damage, personal injury, or death.</p>	
--	----------------	--	--

WIRING DIAGRAM – THREE-PHASE HEATER KIT

NOTE: WHEN INSTALLING HEATER KIT, ENSURE SPEED TAP MUST EXCEED OR EQUAL THE MINIMUM BLOWER SPEED (MBS) SPECIFIED FOR THE AIRHANDLER/HEATER KIT COMBINATION ON THIS UNIT'S SERIAL PLATE. AFTER INSTALLING OPTIONAL HEAT KIT, MARK AN "X" IN THE PROVIDED BELOW. NO MARK INDICATES NO HEAT KIT INSTALLED.



NOTE:- THIS LABEL MUST BE ATTACHED ON THE AIRHANDLER IN A PROMINENT LOCATION



Wiring is subject to change. Always refer to the wiring diagram on the unit for the most up-to-date wiring.

WARNING	High Voltage: Disconnect all power before servicing or installing this unit. Multiple power sources may be present. Failure to do so may cause property damage, personal injury, or death.	
----------------	---	--

DOWNFLOW INSULATION KIT

DPI-B	DPI-C	DPI-D
ARPT24B14**	ARPT36C14**	ARPT36D14**
ARPT30B14**		ARPT42D14**
		ARPT48D14**
		ARPT60D14**

FILTERS

CHASSIS	PART #	SIZE
B	ALFH16201E	16.0" x 20.0"
C	ALFH1912201E	19.5" x 20.0"
D	ALFH20231E	23.0" x 20.0"

