

A legacy of indoor comfort

Get Comfortable.  
It's an Amana® brand.



Amana is a registered trademark of Maytag Corporation or its related companies and is used under license. All rights reserved.

## Experience the legacy of indoor comfort and an American original.

Homeowners have been relying on premium, long-lasting **Amana** brand products since 1934, when Amana, Iowa, native George Foerstner accepted the challenge of building a dependable beverage cooler. Amana successfully met that challenge and, two years later, the company introduced another innovative product that soon became indispensable for commercial establishments such as grocery stores and restaurants — the walk-in beverage cooler, also known as the cold storage locker.

Branching out from the refrigeration field, the company soon became an American institution in the design and manufacture of a wide array of innovative commercial and residential appliances that have virtually revolutionized the quality of our lives. Among these products were the **Amana Radarange**®, the

first portable counter-top microwave oven, as well as a top-quality line of heating and cooling products.

The residents of Amana, Iowa, began a long history of pioneering and craftsmanship, and that spirit continues today in the manufacturing of quality **Amana** brand heating and

**1934**  
 Amana® brand is founded by George Foerstner in Middie Amana, Iowa.



**1947**  
 Manufactured the first DeepFreeze® upright freezer for the home.



**1949**  
 Introduced the first side-by-side refrigerator.

**1954**  
 Amana becomes the first to patent a self-defrost refrigerator.



**1954**  
 Amana's version of the room air conditioner is introduced.

**1957**  
 First bottom-freezer refrigerator.



**1967**  
 Brought the first consumer microwave to the market. The Radarange® microwave.



air conditioning products. From the technology behind our distinct heat exchanger to the inclusion of high-quality filter driers in each of our air conditioners and heat pumps, we remain committed to Amana's legacy of providing homeowners with heating and cooling products that are built to last.



The craftsmanship that goes into every **Amana** brand HVAC product is reflected in the outstanding limited warranty\* coverage. From the technology behind the stainless steel

tubular heat exchanger design to the inclusion of high-quality parts and components installed in all of our air conditioners and heat pumps, we remain committed to the **Amana** brand's legacy of providing you with heating and cooling products that are built to last.

Repeatedly recognized as the brand behind some of the most energy-efficient gas furnaces, **Amana** heating and air conditioning brand products are designed, engineered, and assembled in the United States.

**1997**

Goodman purchased Amana's heating and air conditioning business unit



**2015**

Daikin introduces inverter technology into Amana brand premium cooling products



**2016**

Texas Technology Park commenced operations just outside of Houston, Texas.



**2018**

**ComfortBridge™** technology is introduced and factory-installed in select gas furnaces and air handlers



**1986**

Amana invents revolutionary tubular heat exchanger for gas furnaces.



**2012**

Daikin Industries, Ltd acquired Goodman Global Group, Inc.

\* Complete warranty details available from your local dealer or at [www.amana-hac.com](http://www.amana-hac.com).

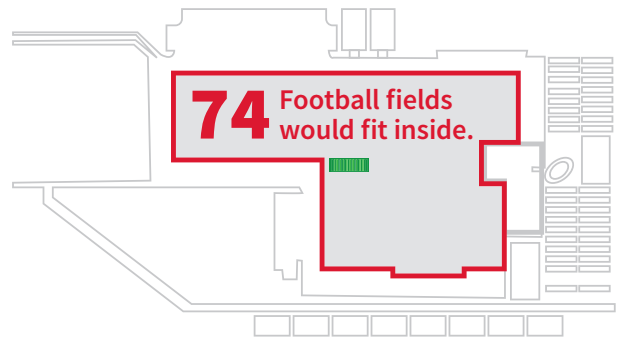




## American Pride

Our commitment to designing, engineering, and assembling our products in the United States is deeper than ever. Our Texas Technology Park campus, located in Waller, Texas, just outside Houston, consolidates design, engineering, testing, manufacturing, and logistics. The facility has over 4 million square feet under one roof and is one of the largest manufacturing facilities in North America.

In a business atmosphere where it is common for companies to move manufacturing outside of the United States, we have invested right here at home. This ensures that customers will get high-quality products with great availability; designed, engineered, and assembled with American Pride





## Outstanding limited warranty\* protection

The craftsmanship that goes into every **Amana** brand HVAC product is reflected in each product's outstanding limited warranty\* coverage. From the technology behind the stainless-steel tubular heat exchanger design to the inclusion of high-quality parts and components installed in all of our air conditioners and heat pumps, we remain committed to the **Amana** brand's legacy of providing you with heating and cooling products that are built to last.



If the compressor or heat exchanger ever fails, a new unit will be provided to the original purchaser of the central air conditioning system as long as they live in the same single-family residence. This premium warranty is offered on our high-efficiency condensers and furnaces\*.



If the compressor ever fails, a new compressor will be provided to the original purchaser of the central air conditioning system as long as they live in the same single-family residence. This outstanding warranty is offered on our high-efficiency package units\*.



If the heat exchanger ever fails, a new heat exchanger will be provided to the original purchaser of the central air conditioning system as long as they live in the same single-family residence. This outstanding warranty is offered on our high-efficiency package units\*.



Included on all **Amana** brand residential equipment regardless of SEER or AFUE rating\*.

\* Complete warranty details are available from your local dealer or at [www.amana-hac.com](http://www.amana-hac.com). To receive the Lifetime Unit Replacement Limited Warranty, the Lifetime Compressor Limited Warranty, Lifetime Heat Exchanger Limited Warranty (in each case, good for as long as you own your home), and 10-Year Parts Limited Warranty, online registration must be completed within 60 days of installation. Online registration is not required in California or Quebec.

### Extended Service Plans

In addition to the Amana brand's limited parts warranty\* coverage, you can also get the Asure™ Extended Service Plan. An Asure Extended Service Plan gives you the peace-of-mind that you won't be faced with unexpected repair or part replacement costs for your heating and air conditioning system. We give you comfort, knowing you and your family won't have to endure any long periods without heating or cooling – you're covered!

The Asure Extended Service Plan complements the standard limited parts warranty by providing labor coverage and additional years of parts coverage, based on the plan selected. Your Asure dealer can provide you with details on the different coverage options available.

### What does the plan cover?

The Asure Extended Service Plan provides extended coverage for all functional parts of your newly-installed Amana brand air conditioning and heating equipment. If a repair is needed, an authorized Asure dealer will respond promptly and make repairs with quality **Amana** specific parts. With Asure coverage, your continued comfort is guaranteed.







# Indoor comfort that can help to deliver low energy costs and high-efficiency performance

## SEER and AFUE: Acronyms well worth knowing

SEER or Seasonal Energy Efficiency Ratio is an industry standard for evaluating the performance of central air conditioners. Simply put, the higher the SEER rating the more energy efficient the unit. Likewise, AFUE or Annual Fuel Utilization Efficiency is the means of determining gas furnace performance. The higher the AFUE % the less fuel is wasted in achieving your desired comfort setting. These performance measurements are critical in recognizing and evaluating the benefits of high-efficiency indoor comfort systems.

## The logic behind buying ahead of the curve

In the days since your old HVAC system was installed, technology improvements aimed at the higher energy efficiency rating have drastically elevated the performance of indoor comfort systems. Standards for performance (SEER and AFUE) have seen a corresponding upward trajectory. Impactful innovations such as variable-speed fans, Inverter technology compressors, and heat exchanger technology have ushered in a new era of HVAC operation with **Amana** brand's efficient air conditioners, heat pumps, and furnaces.

### Compressor Technology

The compressor is the heart of your air conditioning or heat pump system. It is what creates the cooling capacity for your system. With today's technology, compressors can be single-stage, multi-stage, or inverter/variable speed.

Traditionally compressors have been single-stage which means the compressor runs full on or off. Multi-stage compressors, like two-stage compressors, are like having two units, a small one and a large one. This means you will be saving energy during those times that your house does not need the full capacity of the unit.

Inverter or variable-speed compressor technology allows the unit to run at virtually any speed between 30% to 100%. This means even more energy savings because the unit will run at the speed required to deliver the right amount of cooling required by you and your home.

### Fan Motor Technology

The motors that drive the fans contained in your comfort system are available in three types: PSC, EEM, and ECM. The PSC motor is the standard or typical motor that has been in use since the 1800s. As you might imagine, this is the least efficient of the motor types and only operates at one speed. The EEM or X13 or constant torque motor is an upgrade in energy efficiency above the PSC motor plus it offers better performance with increasing duct pressure. However, it essentially also operates at one speed.

The ECM or variable speed motor is the best of the three motor types offering optimum energy efficiency and the ability to deliver the right amount of airflow needed. These fan motors are commonly used in premium systems featuring multi-stage and inverter compressors and two-stage or modulating furnace gas valves.

### Furnace and Gas Valve Technology

The gas valve in a gas furnace is what determines how much gas the furnace burns at any point. Gas valves are available in three types; single-stage, two-stage, and modulating.

The single-stage gas valve operates either completely on or off. The two-stage gas valve can operate fully on, partially on, or off, making it an energy saving and comfort improvement over the single-stage.

The most efficient and comfortable gas valve is the modulating gas valve. The modulating gas valve operates like a water faucet and can vary the gas flow and operate at the optimum position to deliver the right amount of heat you and your home need.



## Amana brand air conditioners: Indoor comfort that can help deliver low energy costs and high-efficiency performance

**Amana** brand central air conditioning systems are designed to be perfect for any home. Even on the hottest days of the year, they can keep a home cool and comfortable. Don't choose between performance, durability, and optimum cooling comfort. Install an **Amana** brand air conditioner and get all three. As you review the various Amana brand air conditioners, remember that higher SEER numbers reflect the more energy-efficient systems. For the greatest energy-efficiency savings, select an air conditioning system with the highest SEER rating.



### Air Conditioning Systems

#### Distinguishing features\*

- ✓ Up to 24.5 SEER efficiency
- ✓ **ComfortAlert™** diagnostics
- ✓ Compressor sound cover
- ✓ Sound-reducing control top
- ✓ Chlorine-free R-410A refrigerant
- ✓ Super-efficient condenser motor
- ✓ Steel louver coil guard
- ✓ Select models feature Inverter compressor technology
- ✓ Select models feature **ComfortBridge™** technology
- ✓ ...and more!

\* Not all features are available on all models



## Amana brand heat pumps: Providing indoor heating and cooling comfort year-round

Enjoy year-round indoor comfort with **Amana** brand heat pumps. These units provide both cooling and heating comfort from a single system. High-efficiency heat pumps can lower the cost of keeping a home completely comfortable all year compared to lower SEER/HSPF units. The **Amana** brand offers a full line of heat pump systems, so you are certain to find the perfect system to fit any budget. For the greatest energy-efficiency savings, select a heat pump system with the highest SEER and HSPF ratings.

The **Amana** brand offers a rugged set of features across the entire heat pump line too.



### Heat Pumps

#### Distinguishing features\*

- ✓ Up to 21 SEER efficiency, up to 10 HSPF
- ✓ **ComfortAlert™** diagnostics
- ✓ Compressor sound cover
- ✓ High-efficiency scroll compressor
- ✓ Liquid line accumulator
- ✓ Crankcase heater
- ✓ Discharge muffler
- ✓ Chlorine-free R-410A refrigerant
- ✓ Steel louver coil guard
- ✓ Select models feature Inverter compressor technology
- ✓ Select models feature **Comfortbridge™** technology
- ✓ ...and more!

\* Not all features are available on all models



## Ramp up with modulating multi-speed and variable-speed gas furnaces

**Amana** brand gas furnaces can deliver warm, money-saving indoor comfort year after year to any home. Modulating, variable and multi-speed furnaces can provide enhanced indoor comfort by slowly ramping up to the thermostat setting rather than simply turning on at full speed. This alleviates the ‘cold air blow’ often associated with single-speed furnaces.

Without question, one of the most critical parts of any gas furnace is the heat exchanger. That’s why we have invested so much time designing, engineering and manufacturing a heat exchanger that is efficient and has a long service life.

We still have one of our early tubular heat exchanger-fitted furnaces in rapid cycle testing. It has been cycled approximately three million times. Now you know why we are confident with the limited warranties\*\* we offer.

**Amana** brand engineers pioneered and perfected a tubular heat exchanger design. You see, not all tubular designs are created equal. The **Amana** brand’s stainless steel dual-diameter heat exchanger has the benefit of exceptional materials and cutting-edge technologies that makes it amazingly durable.



### Gas Furnaces

#### Distinguishing features\*

- ✓ Distinct tubular heat exchanger design
- ✓ Energy-efficient variable-speed and multi-speed
- ✓ Select models feature **Comfortbridge™** technology
- ✓ Silicon nitride igniter
- ✓ Super-efficient blower motors
- ✓ Self-diagnostic control board
- ✓ A full line of 80% AFUE gas furnaces and up to 98% AFUE performance
- ✓ ...and more!

\* Not all features are available on all models

\*\* Complete warranty details available from your local dealer or at [www.amana-hac.com](http://www.amana-hac.com).





## Packaged Systems: Self-contained all-in-one systems designed for energy-efficient performance

Packaged systems sit on the ground or rooftop outside your home and deliver quiet indoor cooling and heating performance\* from a single, self-contained unit. We have a full range of packaged units to meet your needs regardless of where you live. Packaged units are a great option as a replacement to an existing unit or for new construction.

### Air Conditioners

**Amana** brand packaged air conditioners deliver the quiet, indoor cooling of an electric air conditioner.

### Heat Pumps

Similarly, **Amana** brand packaged heat pumps operate as an air conditioner during warm weather, and in the winter deliver heat pump-generated warmth.

### Gas/Electric

An **Amana** brand packaged gas/electric unit offers the cooling comfort of an electric air conditioner and the heating benefits of a gas furnace, complete with our **Amana** brand tubular heat exchanger.

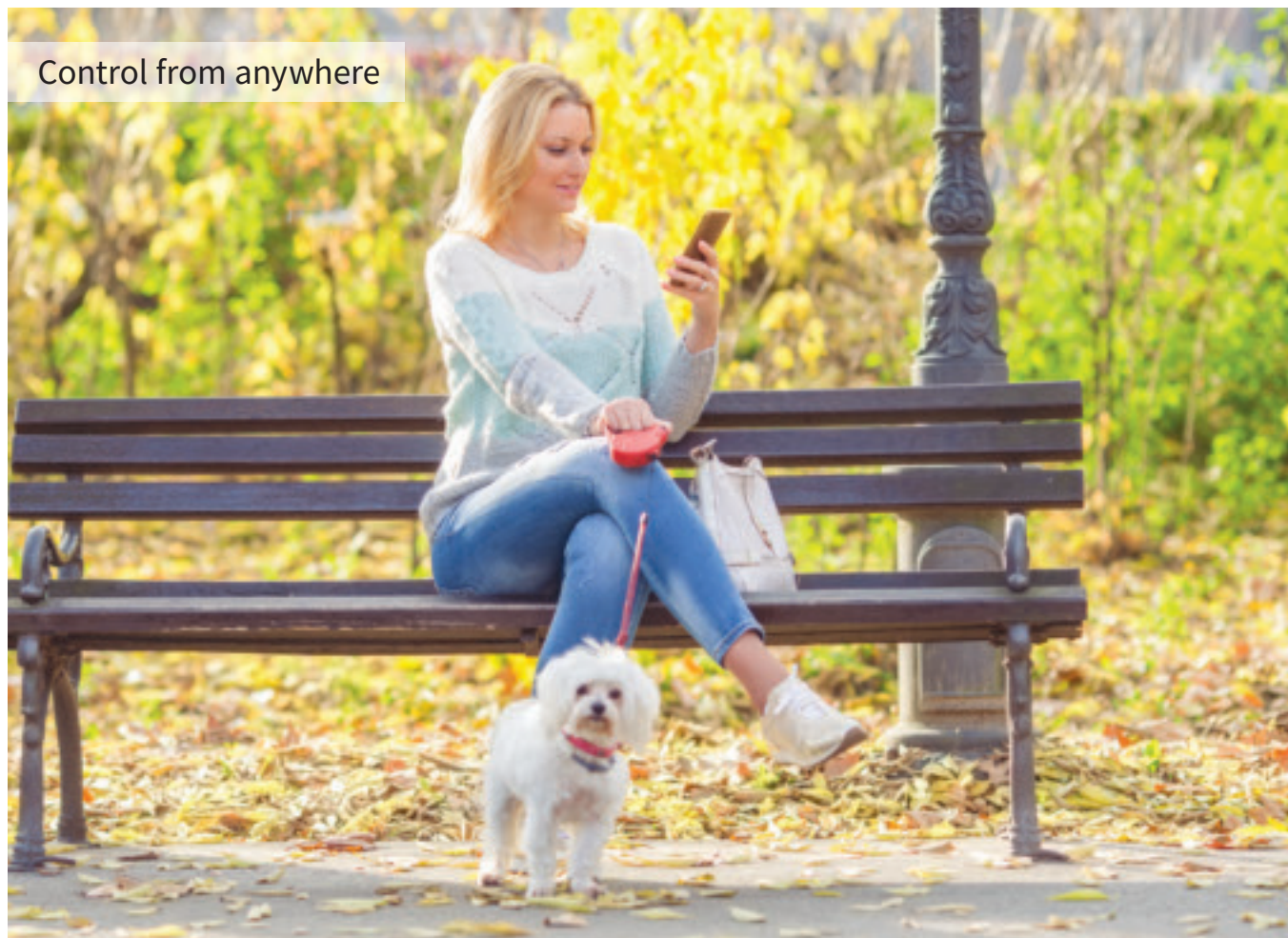
### Dual-Fuel

A dual-fuel packaged unit delivers year-round comfort regardless of the temperature outdoors. For cooling, this system operates as an electric air conditioner. For heating, a dual-fuel unit can automatically determine the most efficient fuel source from electric or gas to economically maintain your preselected level of comfort. Our **Amana** brand dual-fuel packaged unit also features our distinctive tubular heat exchanger.

\* Availability of heating options varies based on packaged unit type.



Control from anywhere



## Get control with ComfortBridge technology

Quite often, installing a new heating and cooling system means that you'll be getting an expensive new thermostat or HVAC control system that works only with that specific system. But, what if you like your current thermostat or control system or if it's seamlessly connected to your smart home components? **ComfortBridge** technology is designed to alleviate your concerns.

### What is ComfortBridge technology?

The revolutionary **ComfortBridge** technology is factory-installed into select gas furnaces and air handlers to help your entire HVAC system cost-effectively operate at peak performance — providing consistent energy-efficient home comfort. Simply put, the system's communicating technology that is typically located in a thermostat was moved from the wall and securely placed into the HVAC equipment!

### How does it work?

Rather than installing the communicating technology circuit board in the thermostat (which is connected to an inside wall in a home), the **ComfortBridge** technology circuit board is securely installed in the indoor unit of the heating and cooling

system. Upon installation, it receives a simple signal from the thermostat and intelligently distributes operational messages between the indoor and outdoor components of a central heating and cooling system. This 'off-the-wall' technology allows you more options, more benefits, and more intelligent control.

**ComfortBridge** technology works differently than most central heating and cooling systems. Many systems may limit homeowners to one specific and perhaps expensive smart thermostat or control system. HVAC equipment with **ComfortBridge** technology features a communicating circuit board designed to work seamlessly with many thermostats. Keep your current single-stage thermostat or upgrade to the 'latest and greatest' smart home thermostat. After proper installation and initial set up, the basic temperature functions of your thermostat or HVAC control system remain the same – the highly responsive and groundbreaking **ComfortBridge** technology takes care of the rest.

### How does ComfortBridge technology benefit you?

The **ComfortBridge** technology smart algorithm gathers HVAC system performance data and uses it to automatically make adjustments that may reduce the amount of energy used to heat or cool your home. And, you're not locked into one specific thermostat just because you installed a new HVAC system. The versatility of **ComfortBridge** technology gives you options.





## Easing the pain of unplanned expenses

No one wants to hear those fateful words, “It’s time to replace your central heating and cooling system.” Yet, like the seasons outdoors, change is inevitable. No matter its longevity, every heating and cooling system sooner or later must be replaced. The good news is the **Amana** brand not only offers a wide range of dependable home comfort systems to meet your exacting needs; your local dealer likely offers convenient, attractive financing options readily available to qualified homeowners.

### Base your decision on comfort, not budget.

It should be no surprise that heating and cooling technology has advanced rapidly in recent years. A modern, high-efficiency HVAC system can provide enhanced indoor comfort and less energy consumption. This can result in real, tangible returns when you invest in a high-efficiency **Amana** brand system, especially when compared to your old unit or today’s base-efficiency units.

With a nominal incremental increase in the monthly payment, you could purchase a high-efficiency **Amana** brand indoor comfort system that will do more than ensure years of reliable indoor comfort. You can realize uncompromising comfort throughout your home, recurring savings on your monthly energy bill compared to base-efficiency units, and ultimately a potential increase in the value of your home.

### Ask your dealer about consumer financing\*

There are financing options that can fit almost any budget when investing in a new indoor comfort system. Many options include low monthly payments with competitive interest rates without a required down payment. For lasting comfort and energy savings, you can see why it might be wise to invest in a high-efficiency **Amana** brand indoor comfort system with higher performance ratings now, so that you can reap the rewards of your foresight for years to come.

\* The Consumer Financing application and approval process is separately administered by the institution chosen by the dealer.



## A legacy of quality

To help demonstrate the legacy of quality that's associated with the **Amana** brand of heating and cooling systems, simply visit at [www.amana-hac.com/reviews](http://www.amana-hac.com/reviews). Read the reviews\* provided by homeowner's who are currently enjoying energy- efficient home comfort. Simply stated, the facts speak for themselves.

### ASXC18

★★★★★ 5.0

#### Excellent Equipment!

Upgraded our system due to a dying older system. Love the new equipment. The electric bill fell by ALOT! – **Jonathon R**

★★★★★ 5.0

#### So Quiet!

2 stage, only way to go! Very quiet. You can have a conversation while standing next to it. – **STsuperman**



### AMSS96

★★★★★ 5.0

#### Great Limited Warranty!

I had been nursing an aging unit and it was finally time to admit defeat. After much research, and multiple comparisons I decided on the **Amana** unit. I replaced all of the components, and am very pleased with the performance. The warranty on the components is untouchable, and I even qualified for additional rebates from my local utility supplier. The prices for the level of efficiency is difficult to beat.

- **Dustan Duren**



### APH16H

★★★★★ 5.0

#### Great Value!

Awesome unit and the BEST warranty. I bought this unit to replace an older unit for a rental property I recently purchased and I'm pleased with the cost, and compatibility of upgrading the unit. This is a great value for my investment and would recommend this unit to anyone!

– **Mr. Fixit**



\* We use the industry leader in homeowner reviews, BazaarVoice, to administer and validate the reviews you see on the website. This means reviews are directly from homeowners, with checks to prevent fabrication, modification, or fraudulent activities. To see how BazaarVoice authenticates reviews, please visit <http://www.bazaarvoice.com/legal/authenticity-policy/>.



AMANA IS SOCIAL!



Like us on **Facebook!**  
[facebook.com/AmanaHVAC](https://facebook.com/AmanaHVAC)



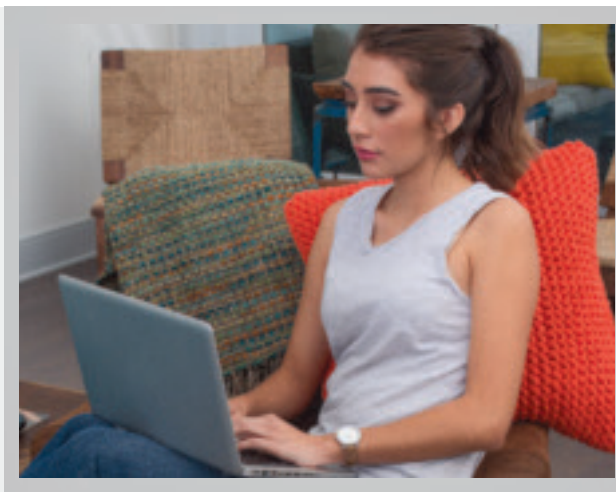
Follow us on **Twitter!**  
[twitter.com/Amana\\_HVAC](https://twitter.com/Amana_HVAC)

**Amana** brand products average **4.7 out of 5** stars in homeowner satisfaction with thousands of reviews captured on **Amana** brand Heating and Air Conditioning products.

**Don't just take our word for it...**

See the reviews on

[www.amana-hac.com/reviews](https://www.amana-hac.com/reviews).



[www.amana-hac.com](https://www.amana-hac.com)

Our continuing commitment to quality products may mean a change in specifications without notice. © 2018 Goodman Company, L.P. Amana is a registered trademark of Maytag Corporation or its related companies and is used under license. All rights reserved.

PM-AAPRIDE 08-18