

GPG14M AND GPG16M
PACKAGED GAS/ELECTRIC UNITS

DESIGNED WITH SMART SPEED™ TECHNOLOGY

UP TO 16 SEER, 81% AFUE

Multi-Position Installation



Air Conditioning & Heating



Thank goodness
for Goodman.®



At Goodman, we believe in American dependability. Units are designed, engineered and assembled in the U.S.A.





Goodman is one of the biggest names in cooling, heating and energy-efficient home comfort. That's because Goodman lives up to its name in a big way, with time-tested energy-efficient technology, highly-durable materials and spot-on manufacturing. So, no matter where you live or whether your home is small or large, Goodman probably has a solution to help keep your home comfortable.

Goodman will keep you cool as a cucumber.

The best packaged system is the kind you don't have to worry about. It comes on the moment you need it and then runs quietly and efficiently all year long. The **Goodman** GPG14M and GPG16M units are loaded with features designed to provide outstanding performance for years to come. We use advanced techniques and materials so you know the cozy, even temperature you feel in every corner of your home is an energy-efficient trend that's here to stay for many years.

Don't let high utility bills make you lose your cool.

Our complete line of packaged systems are priced to help add comfort to your budget from a local independent Goodman dealer. And that's only the beginning. We want you to smile every time you open your utility bill, so we design energy-efficient technology into our units.

Taking pride in our company heritage.

Goodman brand heating and cooling systems are designed to provide refreshingly affordable and energy-efficient indoor comfort solutions using advanced technology. But the company ultimately adheres to some old-fashioned values too. Goodman believes in the integrity of the American worker. That's why **Goodman** brand heating and cooling systems are designed, engineered and assembled in the United States.

Experience reliable indoor comfort for everyone in your home season after season.





A LOT GOES INTO EVERY GOODMAN BRAND GPG14M AND GPG16M PACKAGED UNITS

The art of precision

Efficient Cooling Capacity – 5 millimeter (select models) refrigeration grade premium copper tubing and aluminum fin condenser coil configuration delivers outstanding heat transfer properties.

All-Aluminum Evaporator Coil – A single metal solution that is designed for enhanced durability and performance.

Goodman packaged units provide you with reliable, energy-efficient and affordable indoor comfort.

Smart Speed™ Technology – Designed to automatically adjust the speed of the compressor and condensing fan motor based on cooling demand – full, 100% capacity for extreme temperatures, and reduced capacity for milder days. A system with **Smart Speed** technology may lower your energy costs when compared to a single-speed unit that only runs at 100% on or 100% off.

Heavy-Gauge Galvanized Steel Enclosure with Powder-Paint Finish – Protects your system from extreme outdoor elements.

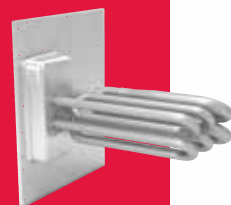
Fully-Insulated Blower Compartment – Designed for quiet performance. Panels are conveniently located to provide easy access.

Self-Contained Packaged Unit – Designed for multi-position installation.

MODEL	SEER	AFUE	EER	CAPACITY
GPG14M	14	81%	11	2 to 5 Ton
GPG16M	Up to 16	81%	12	2 to 5 Ton

COMPONENT UPGRADE OFFERS BETTER PERFORMANCE

The aluminized steel, tubular primary heat exchanger featured in **Goodman** brand packaged units is likely the most essential component in a packaged unit's performance. This distinctive heat exchanger employs wrinkle-bend technology which was developed to deliver extraordinary durability and long-term reliability.



When your current packaged unit breaks, it's good to know that your local, independent **Goodman** brand contractor has financing options available to help defray what might be considered an emergency purchase for your home.

Thank goodness for **Goodman**®



COUNT ON OUTSTANDING LIMITED WARRANTY* PROTECTION

2 YEAR **UNIT REPLACEMENT LIMITED WARRANTY***

20 YEAR **HEAT EXCHANGER LIMITED WARRANTY***

10 YEAR **PARTS LIMITED WARRANTY***

* Complete warranty details available from your local dealer or at www.goodmanmfg.com. To receive the 2-Year Unit Replacement Limited Warranty, 20-Year Heat Exchanger Limited Warranty (good for as long as you own your home), and 10-Year Parts Limited Warranty, online registration must be completed within 60 days of installation. Online registration is not required in California or Quebec.



PERFORMANCE

UP TO
16.0
SEER

UP TO
81%
AFUE

The 81% AFUE rating on this packaged unit means that 81 cents of every energy dollar warms your home. The Department of Energy (DOE) established the AFUE (Annual Fuel Utilization Efficiency) system to calculate the annual operating cost of residential packaged units.

Independent, dependable, courteous, prompt, honest, highly-skilled and respectful of you and your home. That's why all the time homeowners say,

"These guys are good – really good."



Why does Goodman have such a large fan base?

Many of your neighbors may have discovered that a reliable and energy-efficient home comfort system doesn't have to cost a fortune. **Goodman** brand whole-house systems feature many of the latest and greatest money-saving technology benefits that we can offer. They are designed and engineered to run quietly and pretty much worry-free.

EXTENDED SERVICE PLANS AVAILABLE

For even greater peace-of-mind, ask your dealer or visit our website at www.goodmanmfg.com for more details about AsureSM, an affordable Parts and/or Labor Extended Service Plan for your entire Goodman brand HVAC system.

AsureSM
EXTENDED SERVICE PLAN

Ask your dealer for full details.

**ONCE YOU CHOOSE THE *GOODMAN BRAND*,
YOU'LL PROBABLY BE A FAN FOR LIFE.**



YOU COULD BECOME ONE, TOO!

Just go to
www.goodmanmfg.com/reviews

and find out why you'll say
"Thank goodness for Goodman®."

GOODMAN IS SOCIAL!



Like us on **Facebook!**
facebook.com/GoodmanMfg



Follow us on **Twitter!**
twitter.com/Goodman_Mfg

ComfortBridge™
technology

HVAC Communicating Control

ComfortBridge technology offers off-the-wall smart communicating systems capable of customizing energy-efficient performance, use of any single-stage thermostat, and more.



www.comfortbridge.com

CLEAN COMFORT®
INDOOR AIR ESSENTIALS

Pure. Clean. Air.

Indoor comfort in your home is about more than just adjusting the temperature on the thermostat. Many homeowners overlook the need for necessary components and systems that can improve the indoor air you breathe.



www.cleancomfort.com



GOODMAN – A MEMBER OF DAIKIN GROUP

Daikin Industries, Ltd. (DIL) is a global Fortune 1000 company. It is a worldwide leader for residential and commercial HVAC. DIL is engaged primarily in the development, manufacture, sale, and aftermarket support of heating, ventilation, air conditioning and refrigeration equipment, refrigerants and other chemicals, as well as oil hydraulic products. DIL is headquartered in Osaka, Japan.

The company provides innovative, premium quality indoor climate management solutions to meet the changing needs of residential, commercial, and industrial customers.

For installation in California's South Coast Air Quality Management District (SCAQMD) only: This furnace does not meet the SCAQMD Rule 1111 NOx emission limit (14 ng/J), and thus is subject to a mitigation fee of up to \$450. This furnace is not eligible for the Clean Air Furnace Rebate Program: www.CleanAirFurnaceRebate.com.



Additional Information

Before purchasing this appliance, read important information about its estimated annual energy consumption, yearly operating cost, or energy efficiency rating that is available from your retailer.

Goodman®

a member of **DAIKIN** group

Our continuing commitment to quality products may mean a change in specifications without notice. © 2020 Goodman Manufacturing Company, L.P. Houston, Texas • USA
www.goodmanmfg.com

CB-GPG14M-16M 2-20

