

# Franklin®

Air Conditioning & Heating

Up to 98% AFUE Performance

ComfortBridge™ Communicating Technology compatible

HIGH-EFFICIENCY, MODULATING VARIABLE-SPEED  
UPFLOW/HORIZONTAL GAS FURNACE

## AMVM97



RELIABILITY, EFFICIENCY AND AVAILABILITY

**QUALITY YOU CAN DEPEND ON**



# AMVM97

## Franklin® brand Gas Furnace VARIABLE-SPEED MODULATING MOTOR

### COMFORT. SAVINGS. PERFORMANCE.

#### Enjoy the comfort and efficiency

The **Franklin** brand AMVM97 High-Efficiency Gas Furnace with modulating gas valve and a variable-speed circulating blower provides efficient and economical performance. Unlike single-stage gas furnaces that operate 'all on' or 'all off,' a **Franklin** brand modulating gas furnace typically runs at the lowest possible speed to precisely maintain a constant, steady temperature in your home. A modulating gas furnace optimizes its heating output to maximize indoor comfort and lower energy costs.

When operating at low-speed levels, your **Franklin** brand gas furnace consumes less energy to keep your home comfortable. In addition, the 98% AFUE rating on this gas furnace means that 98 cents of every \$1.00 of heating energy expense warms your home. Some older central heating systems are rated at 60% AFUE. The Department of Energy (DOE) established the AFUE (Annual Fuel Utilization Efficiency) system to calculate the annual operating cost of residential gas furnaces.

### Precise comfort and value

When selecting a gas furnace for your home, you are often searching to find the best combination for an ideal level of home comfort. You want to find a gas furnace that offers exceptional, dependable, and stable performance for many, many years. Most importantly, you want the best value possible. Faced with the decision to find a trustworthy and reliable gas furnace that delivers quiet, energy-saving operation and outstanding long-term value, the **Franklin** brand AMVM97 Modulating Gas Furnace may be your best option. Whether it's the coldest day of the year or any day of the year, with the **Franklin** AMVM97 Gas Furnace you'll enjoy comfort and savings.

Talk to your **Franklin** brand dealer about opportunities to optimize the efficiency of your new unit.

### Quality engineering

ComfortBridge™  
technology



**ComfortBridge** off-the-wall communicating technology constantly monitors the performance of a high-efficiency heating and cooling system. As **ComfortBridge** communicating technology gathers data, it uses it to make automatic adjustments, as needed; to use the minimum amount of energy required to create consistent and comfortable indoor heating and cooling.



# VALUE AND QUALITY

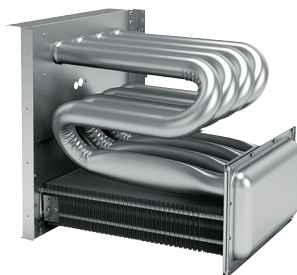
## AMVM97 IMPRESSIVE FEATURES AND BENEFITS

### The heart of comfort

The award-winning design of the primary heat exchanger in the **Franklin** brand AMVM97 Modulating Gas Furnace is unique. It's constructed from tubular aluminized-steel.

Furthermore, the use of wrinkle-bend technology results in an extremely durable heat exchanger.

A heat exchanger often is considered the essential component of any gas furnace. Additionally, this gas furnace has a stainless-steel secondary heat exchanger. This combination offers one of the best levels of reliability, durability, and efficiency you'll find within the **Franklin** brand.



### Outstanding warranty\* protection



\* Complete warranty details available from your local dealer or at [FranklinHVACSystems.com](http://FranklinHVACSystems.com). To receive the Lifetime Unit Replacement Limited Warranty, Lifetime Heat Exchanger Limited Warranty (in each case good for as long as you own your home), 10-Year Unit Replacement Limited Warranty and 10-Year Parts Limited Warranty, online registration must be completed within 60 days of installation. Online registration is not required in California or Quebec.

### Additional information

Before purchasing this appliance, read important information about its estimated annual energy consumption, yearly operating cost, or energy efficiency rating that is available from your retailer.

- **Stainless-Steel Tubular Primary Heat Exchanger** – Unique tubular stainless-steel construction formed using wrinkle bend technology results in an extremely durable heat exchanger. Paired with a stainless-steel secondary heat exchanger, this combination provides reliability, durability and efficiency.
- **Efficient and Quiet Variable-Speed Circulator Motor** – Provides quiet system startup and shutdown with highly efficient performance.
- **Durable Silicon Nitride Igniter** – Eliminates the need for an energy-wasting pilot light.
- **Self Calibrating Modulating Gas Valve** – Auto-configures for each installation.
- **Quiet, Variable-Speed, Induced-Draft Blower** – Provides precise control and enhanced energy efficient performance as compared to a natural draft furnace.
- **Continuous Air Circulation** – Provides added filtration and keeps air moving throughout your home to help maintain comfort.
- **Self-Diagnostic Control Board** – Continuously monitors the system for consistent, reliable operation, stores last diagnostic codes in memory; and indicates condition through a 7 segment display for quick troubleshooting.
- **Heavy-Gauge Steel Cabinet** – Durable finish resists corrosion and protects essential components.
- **Thermally Insulated Cabinet** – The fully-insulated cabinet means air leakage of less than 2% to maximize heat transfer efficiency and lower blower noise.



# Never heard of the Franklin brand?

We're not surprised.

Many homeowners are not aware of the brand or efficiency level of their heating and cooling system. As long as the system is operating and providing reliable heating and cooling everything is fine. Then one day the system stops working. And that's the same day that homeowners briefly reacquaint themselves with their heating and cooling unit!

You may not have heard about the **Franklin** brand of residential heating and cooling systems because the brand is not a nationally advertised brand. In addition, most homeowners purchase a central heating and cooling system just once or twice in their lifetime. Even though you may not have heard of the **Franklin** brand you can rest assured that all **Franklin** brand products are hard working, and are designed to deliver energy-efficient performance for many, many years.

Your local heating and cooling contractor has access to many brands that they can offer, so when they recommend the **Franklin** brand you should know that they have determined that this brand is the best for you, your family and your home.



For complete information on the **Franklin** brand, be certain to visit:

**[FranklinHVACSystems.com](http://FranklinHVACSystems.com)**

Can no longer be installed in California's South Coast Air Quality Management District (SCAQMD) on or after October 1, 2019.