

# Franklin<sup>®</sup>

Air Conditioning & Heating

Up to 96% AFUE Performance

TWO-STAGE GAS VALVE, HIGH-EFFICIENCY, MULTI-SPEED  
ECM DOWNFLOW/HORIZONTAL GAS FURNACE

## GCEC96



RELIABILITY, EFFICIENCY AND AVAILABILITY

**QUALITY YOU CAN DEPEND ON**



## Franklin® brand Gas Furnace MULTI-SPEED ECM MOTOR

**COMFORT.  
SAVINGS.  
PERFORMANCE.**

### Enjoy the comfort and efficiency

The Franklin brand GCEC96 High-Efficiency Gas Furnace with two-stage heating and a multi-speed circulating blower provides efficient and economical performance. Unlike single-stage gas furnaces that operate 'all on' or 'all off,' a Franklin brand multi-speed gas furnace offers various levels of operation to meet your indoor heating needs. Depending on energy-efficiency and insulating variables of your home, your home may require full capacity to reach your desired interior temperature during frigid, cold days, or a slower speed to maintain the warm, comfortable temperature that your home needs.

When operating at low-speed levels, your Franklin brand gas furnace consumes less energy to keep your home comfortable. The 96% AFUE rating on this gas furnace means that up to 96 cents of every \$1.00 of heating energy expense warms your home. Some older central heating systems are rated at 60% AFUE.

### A comfortable value

When selecting a gas furnace for your home, you are often searching to find the best combination for an ideal level of home comfort. You want to find a gas furnace that offers exceptional, dependable, and stable performance for many, many years. Most importantly, you want the best value possible. Faced with the decision to find a trustworthy and reliable gas furnace that delivers quiet, energy-saving operation and outstanding long-term value, the Franklin brand GCEC96 Gas Furnace may be your best option. The gas furnace in your home provides not only heating comfort, but it operates with your central air conditioner to deliver cool comfort, too. So, your final choice is doubly beneficial. Whether it's the coldest day of the year or any day of the year, with the Franklin brand GCEC96 Gas Furnace you'll enjoy comfort and value.

**Talk to your Franklin brand dealer about opportunities to optimize the efficiency of your new unit.**

### Quiet you can count on

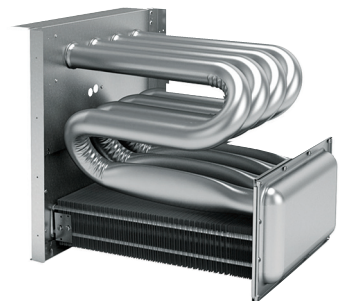
The components of your Franklin brand GCEC96 Furnace including the multi-speed blower and two-stage gas valve have been specially selected to reduce the noise levels common in single-speed furnaces without these features.

Finally, we house these components in a fully insulated, heavy-gauge steel cabinet. The result... quiet comfort.

### The heart of comfort

**The award-winning design of the primary heat exchanger in the Franklin brand GCEC96 is distinctive. It's constructed from tubular aluminized-steel.**

Furthermore, the use of wrinkle-bend technology results in an extremely durable heat exchanger. A heat exchanger often is considered the essential component of any gas furnace. Additionally, this gas furnace has a stainless-steel secondary heat exchanger. This combination offers one of the best levels of reliability, durability, and efficiency you'll find within the Franklin brand.



# VALUE AND QUALITY

## GCEC96 IMPRESSIVE FEATURES AND BENEFITS

### Outstanding warranty protection



\* Complete warranty details available from your local dealer or at [FranklinHVACSystems.com](http://FranklinHVACSystems.com). To receive the 10-Year Unit Replacement Limited Warranty, Lifetime Heat Exchanger Limited Warranty (good for as long as you own your home), and 10-Year Parts Limited Warranty, online registration must be completed within 60 days of installation. Online registration is not required in California or Quebec.

### Additional information

Before purchasing this appliance, read important information about its estimated annual energy consumption, yearly operating cost, or energy efficiency rating that is available from your retailer.



- **Aluminized Steel Tubular Primary Heat Exchanger** – Distinctive tubular aluminized steel construction formed using wrinkle-bend technology results in an extremely durable heat exchanger. Paired with a stainless-steel secondary heat exchanger, this combination provides reliability, durability and efficiency.
- **Two-Stage Gas Valve** – Reduces energy needed during moderate demand to deliver outstanding comfort and efficiency as compared to single-stage gas valves.
- **Multi-Speed ECM Motor** – Automatically adjusts airflow to match comfort needs, reduces energy consumption and system noise as compared to single-stage motors.
- **Durable 110-Volt Silicon Nitride Igniter** – Eliminates the need for an energy-wasting pilot light.
- **Quiet, Two-Speed, Induced-Draft Blower** – Provides precise control and enhanced energy-efficient performance as compared to a natural draft furnace.
- **Self-Diagnostic Control Board** – Continuously monitors the system for consistent, reliable operation, stores last diagnostic codes in memory; and indicates condition through a flashing LED for quick troubleshooting.
- **Thermally-Insulated Cabinet** – The fully insulated cabinet means air leakage of less than 2% to maximize the heat transfer efficiency and lower blower noise.



# Never heard of the Franklin brand?

We're not surprised.

Many homeowners are not aware of the brand or efficiency level of their heating and cooling system. As long as the system is operating and providing reliable heating and cooling everything is fine. Then one day the system stops working. And that's the same day that homeowners briefly reacquaint themselves with their heating and cooling unit!

You may not have heard about the **Franklin** brand of residential heating and cooling systems because the brand is not a nationally advertised brand. In addition, most homeowners purchase a central heating and cooling system just once or twice in their lifetime. Even though you may not have heard of the **Franklin** brand you can rest assured that all **Franklin** brand products are hard working, and are designed to deliver energy-efficient performance for many, many years.

Your local heating and cooling contractor has access to many brands that they can offer, so when they recommend the **Franklin** brand you should know that they have determined that this brand is the best for you, your family and your home.



For complete information on the **Franklin** brand, be certain to visit:

**[FranklinHVACSystems.com](http://FranklinHVACSystems.com)**

Can no longer be installed in California's South Coast Air Quality Management District (SCAQMD) on or after October 1, 2019.