

Franklin®

Air Conditioning & Heating

Up to 96% AFUE Performance

HIGH-EFFICIENCY, MULTI-SPEED ECM
DOWNFLOW/HORIZONTAL GAS FURNACE

GCES96



RELIABILITY, EFFICIENCY AND AVAILABILITY

QUALITY YOU CAN DEPEND ON



GCES96

Franklin® brand Multi-Speed ECM Gas Furnace HIGH-EFFICIENCY

COMFORT. SAVINGS. PERFORMANCE.

Enjoy the comfort and efficiency

Energy efficiency is key to controlling the cost of heating your home. This furnace's 96% AFUE rating means 96 cents of every \$1.00 of heating energy expense warms your home. Some older central heating systems rate at 60% AFUE, meaning only 60 cents of every \$1.00 of heating energy expense warms your home. The remaining 40 cents is lost energy – wasteful and expensive.

Reliability and long life

The heart of any furnace is the heat exchanger. Our aluminized-steel tubular heat exchanger and stainless-steel recuperative coil have been tested to industry standards.

For further safety and reliability, we also include a quiet, efficient hot surface igniter that helps ensure safe start-ups and maximum igniter life.

For reliable warmth and money-saving energy efficiency.

As a homeowner, you try to find a balance between your family's comfort and your monthly energy costs. To meet those needs, we've developed the **Franklin** brand GCES96 High-Efficiency Multi-Speed ECM Gas Furnace. What should you expect from your **Franklin** brand GCES96 High-Efficiency Single-Stage Gas Furnace? How about a superior combination of performance, efficiency and affordability? That's just what you'll get with the **Franklin** brand. Whether it's the coldest day of the year or any day of the year, with the **Franklin** brand GCES96 Gas Furnace you'll enjoy comfort and value.

Talk to your Franklin brand dealer about opportunities to optimize the efficiency of your new unit.

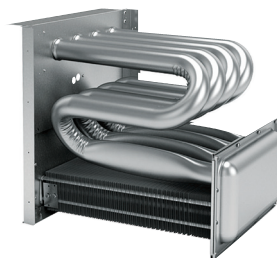
Quiet you can count on

Your **Franklin** brand GCES96 Furnace uses a multi-speed blower motor and sound-isolated blower assembly to reduce the noise levels common in other furnaces without these features. Add an insulated, heavy-gauge steel cabinet, and the result is... quiet comfort.

Unmatched combination of performance, efficiency and affordability. That's just what you'll get with **Franklin**.

The heart of comfort

The award-winning design of the primary heat exchanger in the Franklin brand GCES96 Gas Furnace is unique. It's constructed from tubular aluminized-steel.



Furthermore, the use of wrinkle-bend technology results in an extremely durable heat exchanger. A heat exchanger often is considered the essential component of any gas furnace. Additionally, this gas furnace has a stainless-steel secondary heat exchanger. This combination offers one of the best levels of reliability, durability, and efficiency you'll find within the **Franklin** brand.

VALUE AND QUALITY

GCES96 IMPRESSIVE FEATURES AND BENEFITS

Outstanding warranty* protection



* Complete warranty details available from your local dealer or at FranklinHVACSystems.com. To receive the 10-Year Unit Replacement Limited Warranty, Lifetime Heat Exchanger Limited Warranty (good for as long as you own your home), and 10-Year Parts Limited Warranty, online registration must be completed within 60 days of installation. Online registration is not required in California or Quebec.

Additional information

Before purchasing this appliance, read important information about its estimated annual energy consumption, yearly operating cost, or energy efficiency rating that is available from your retailer.



- **Aluminized Steel Tubular Primary Heat Exchanger** – Distinctive tubular aluminized steel construction formed using wrinkle-bend technology results in an extremely durable heat exchanger. Paired with a stainless-steel secondary heat exchanger, this combination provides reliability, durability and efficiency.
- **Efficient and Quiet Multi-Speed ECM Circulator Motor** – Provides quiet system startup and shutdown with highly-efficient performance.
- **Single-Stage Gas Valve** – Reduces energy needed during moderate demand to deliver outstanding comfort and efficiency as compared to natural draft furnaces.
- **Durable Silicon Nitride Igniter** – Eliminates the need for an energy-wasting pilot light.
- **Quiet, Single-Speed, Induced-Draft Blower** – Provides precise control and enhanced energy-efficient performance as compared to a natural draft furnace.
- **Self-Diagnostic Control Board** – Continuously monitors the system for consistent, reliable operation, stores last diagnostic codes in memory; and indicates condition through a dual 7-segment display for quick troubleshooting.
- **Thermally-Insulated Cabinet** – The fully insulated cabinet means air leakage of less than 2% to maximize the heat transfer efficiency and lower blower noise.

Never heard of the Franklin brand?

We're not surprised.

Many homeowners are not aware of the brand or efficiency level of their heating and cooling system. As long as the system is operating and providing reliable heating and cooling everything is fine. Then one day the system stops working. And that's the same day that homeowners briefly reacquaint themselves with their heating and cooling unit!

You may not have heard about the **Franklin** brand of residential heating and cooling systems because the brand is not a nationally advertised brand. In addition, most homeowners purchase a central heating and cooling system just once or twice in their lifetime. Even though you may not have heard of the **Franklin** brand you can rest assured that all **Franklin** brand products are hard working, and are designed to deliver energy-efficient performance for many, many years.

Your local heating and cooling contractor has access to many brands that they can offer, so when they recommend the **Franklin** brand you should know that they have determined that this brand is the best for you, your family and your home.



For complete information on the **Franklin** brand, be certain to visit:

FranklinHVACSystems.com

Can no longer be installed in California's South Coast Air Quality Management District (SCAQMD) on or after October 1, 2019.