

Franklin®

Air Conditioning & Heating

Up to 96% AFUE Performance
ComfortBridge™ Communicating Technology compatible

HIGH-EFFICIENCY, VARIABLE-SPEED ECM
UPFLOW/HORIZONTAL GAS FURNACE

GMVC96

PRECISE
COMFORT AND VALUE

RELIABILITY, EFFICIENCY AND AVAILABILITY

QUALITY YOU CAN DEPEND ON



GMVC96

Franklin® brand Gas Furnace VARIABLE-SPEED ECM MOTOR

COMFORT. SAVINGS. PERFORMANCE.

Enjoy the comfort and efficiency

The **Franklin** brand's GMVC96 High-Efficiency Gas Furnace with two-stage heating and a variable-speed circulating blower provides efficient and economical performance. Unlike single-stage gas furnaces that operate 'all on' or 'all off,' a **Franklin** brand variable-speed gas furnace typically runs up to 90% of the time in the low-speed capacity on most days. But when the temperature outside is frightfully cold, this furnace quietly ramps-up to high-speed capacity to deliver all the warm, comfortable heat your home needs.

When operating at low-speed levels, your **Franklin** brand gas furnace consumes less energy to keep your home comfortable. In addition, the 96% AFUE rating on this gas furnace means that 96 cents of every \$1.00 of heating energy expense warms your home. Some older central heating systems are rated at 60% AFUE. The Department of Energy (DOE) established the AFUE (Annual Fuel Utilization Efficiency) system to calculate the annual operating cost of residential gas furnaces.

Precise comfort and value

When selecting a gas furnace for your home, you are often searching to find the best combination for an ideal level of home comfort. You want to find a gas furnace that offers exceptional, dependable, and stable performance for many, many years. Most importantly, you want the best value possible. Faced with the decision to find a trustworthy and reliable gas furnace that delivers quiet, energy-saving operation and outstanding long-term value, the **Franklin** brand GMVC96 Gas Furnace may be your best option. Whether it's the coldest day of the year or any day of the year, with the **Franklin** GMVC96 Gas Furnace you'll enjoy comfort and savings.

Talk to your Franklin brand dealer about opportunities to optimize the efficiency of your new unit.

Quality engineering

ComfortBridge™
technology



ComfortBridge off-the-wall communicating technology

constantly monitors the performance of a high-efficiency heating and cooling system. As **ComfortBridge** communicating technology gathers data, it uses it to make automatic adjustments, as needed; to use the minimum amount of energy required to create consistent and comfortable indoor heating and cooling.



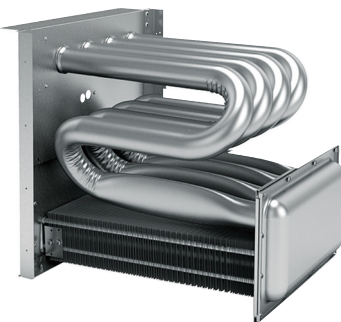
VALUE AND QUALITY

GMVC96 IMPRESSIVE FEATURES AND BENEFITS

The heart of comfort

The award-winning design of the primary heat exchanger in the Franklin brand GMVC96 is unique. It's constructed from tubular aluminized-steel.

Furthermore, the use of wrinkle-bend technology results in an extremely durable heat exchanger. A heat exchanger often is considered the essential component of any gas furnace. Additionally, this gas furnace has a stainless-steel secondary heat exchanger. This combination offers one of the best levels of reliability, durability, and efficiency you'll find within the Franklin brand.



Outstanding warranty* protection



* Complete warranty details available from your local dealer or at FranklinHVACSystems.com. To receive the Lifetime Heat Exchanger Limited Warranty (good for as long as you own your home), 10-Year Unit Replacement Limited Warranty and 10-Year Parts Limited Warranty, online registration must be completed within 60 days of installation. Online registration is not required in California or Quebec.

Additional information

Before purchasing this appliance, read important information about its estimated annual energy consumption, yearly operating cost, or energy efficiency rating that is available from your retailer.

- **Aluminized Steel Tubular Primary Heat Exchanger** – Distinctive tubular aluminized steel construction formed using wrinkle-bend technology results in an extremely durable heat exchanger. Paired with a stainless-steel secondary heat exchanger, this combination provides reliability, durability and efficiency.
- **Two-Stage Gas Valve** – Reduces energy needed during moderate demand to deliver outstanding comfort and efficiency as compared to single-stage gas valves.
- **ComfortBridge Technology** – Continuously monitors system performance for customized indoor comfort.
- **The CoolCloud™ HVAC app** – Enables qualified technicians to connect, configure and diagnose select HVAC systems quickly and accurately.
- **Durable Silicon Nitride Igniter** – Eliminates the need for an energy-wasting pilot light.
- **Quiet, Two-Stage, Induced-Draft Blower** – Provides precise control and enhanced energy-efficient performance as compared to a natural draft furnace.
- **Efficient and Quiet Variable-Speed ECM Circulator Motor** – Provides quiet system startup and shutdown with highly efficient performance.
- **Self-Diagnostic Control Board** – Continuously monitors the system for consistent, reliable operation, stores last diagnostic codes in memory; and indicates condition through a 7-segment display for quick troubleshooting.
- **Thermally-Insulated Cabinet** – The fully insulated cabinet means air leakage of less than 2% to maximize the heat transfer efficiency and lower blower noise.

Never heard of the Franklin brand?

We're not surprised.

Many homeowners are not aware of the brand or efficiency level of their heating and cooling system. As long as the system is operating and providing reliable heating and cooling everything is fine. Then one day the system stops working. And that's the same day that homeowners briefly reacquaint themselves with their heating and cooling unit!

You may not have heard about the **Franklin** brand of residential heating and cooling systems because the brand is not a nationally advertised brand. In addition, most homeowners purchase a central heating and cooling system just once or twice in their lifetime. Even though you may not have heard of the **Franklin** brand you can rest assured that all **Franklin** brand products are hard working, and are designed to deliver energy-efficient performance for many, many years.

Your local heating and cooling contractor has access to many brands that they can offer, so when they recommend the **Franklin** brand you should know that they have determined that this brand is the best for you, your family and your home.



For complete information on the **Franklin** brand, be certain to visit:

FranklinHVACSystems.com

Can no longer be installed in California's South Coast Air Quality Management District (SCAQMD) on or after October 1, 2019.