

Franklin[®]

Air Conditioning & Heating

Up to 80% AFUE Performance

SINGLE-STAGE ULTRA-LOW-NOX, MULTI-SPEED ECM,
UPFLOW/HORIZONTAL GAS FURNACE

GMES80-U



RELIABILITY, EFFICIENCY AND AVAILABILITY

QUALITY YOU CAN DEPEND ON



GMES80-U

Franklin® brand Single-Stage Ultra-Low-Nox, MULTI-SPEED ECM GAS FURNACE

COMFORT. SAVINGS. PERFORMANCE.

Enjoy the comfort and efficiency

As a homeowner, you want a cost-effective way to maintain a comfortable environment for your family. You've got it with the **Franklin** brand GMES80-U Multi-Speed Gas Furnace, which provides effective home heating at an affordable price.

Energy efficiency is key to controlling the cost of heating your home. This furnace's 80% AFUE rating means 80 cents of every \$1.00 of heating energy expense warms your home. Some older central heating systems rate at 60% AFUE, meaning only 60 cents of every \$1.00 of heating energy expense warms your home. The remaining 40 cents is lost energy - wasteful and expensive.

The heart of any furnace is the heat exchanger. Our aluminized-steel tubular heat exchanger has been tested to industry standards.

For further safety and reliability, your furnace has a durable hot surface igniter, and has integrated controls with diagnostics, plus a combination redundant gas valve and regulator.

A comfortable value

When selecting a gas furnace for your home, you are often searching to find the best combination for an ideal level of home comfort. You want to find a gas furnace that offers exceptional, dependable, and stable performance for many, many years. Most important you want the best value possible. Faced with the decision to find a trustworthy and reliable gas furnace that delivers quiet, energy-saving operation and outstanding long-term value, the **Franklin** brand GMES80-U Multi-Speed ECM Gas Furnace may be your best option. The gas furnace in your home provides not only heating comfort, but it operates with your central air conditioner to deliver cool comfort too. So, your final choice is doubly beneficial. Whether it's the coldest day of the year or any day of the year, with the **Franklin** brand GMES80-U Multi-Speed ECM Gas Furnace you'll enjoy comfort and value.

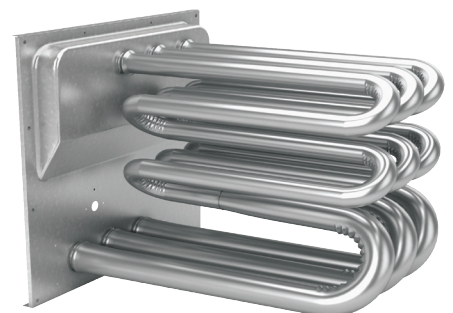
Talk to your Franklin brand dealer about opportunities to optimize the efficiency of your new unit.

Quiet you can count on

Your **Franklin** brand GMES80-U Gas Furnace uses a multi-speed blower motor and sound-isolated blower assembly to reduce the noise levels common in other furnaces without these features. Add an insulated, heavy-gauge steel cabinet and the result is quiet comfort.

The heart of comfort

The stainless steel, tubular primary heat exchanger featured in **Franklin** brand gas furnaces is likely the most essential component in a gas furnace's performance. This distinctive heat exchanger employs wrinkle-bend technology which was developed to deliver extraordinary durability and long-term reliability.



VALUE AND QUALITY

GMES80-U IMPRESSIVE FEATURES AND BENEFITS

Outstanding warranty* protection



* Complete warranty details available from your local dealer or at FranklinHVACSystems.com. To receive the Lifetime Heat Exchanger Limited Warranty (good for as long as you own your home), 2-Year Unit Replacement Limited Warranty and 10-Year Parts Limited Warranty, online registration must be completed within 60 days of installation. Online registration is not required in California or Quebec.

Additional information

Before purchasing this appliance, read important information about its estimated annual energy consumption, yearly operating cost, or energy efficiency rating that is available from your retailer.



Convenient 33 $\frac{3}{4}$ " height unit

- **Heavy-Duty 439 Stainless-Steel Heat Exchanger** – Distinctive steel construction formed using wrinkle-bend technology results in an extremely durable heat exchanger for reliability and efficiency.
- **Stainless-Steel Premix Burner** – Creates an optimal combination of fuel and oxygen resulting in clean combustion with low emissions output.
- **Multi-Speed ECM Motor** - Automatically adjusts airflow to match comfort needs, reduces energy consumption and system noise as compared to single-stage motors.
- **Durable Silicon Nitride Igniter** - Eliminates the need for an energy-wasting pilot light.
- **80% AFUE** - 80% of the energy from the fuel is effectively used to heat the home.
- **Sealed Combustion** - Provides quiet, enhanced energy-efficient performance by adding heat to your indoor air, not exchanging it with outdoor air.
- **Self-Diagnostic Pre-Programmed Control Board** – Continuously monitors the system for consistent, reliable operation, stores last diagnostic codes in memory and indicates condition through LED for quick troubleshooting.
- **Thermally-Insulated Cabinet** – The fully insulated cabinet means air leakage of less than 2% to maximize the heat transfer efficiency and lower blower noise.
- **Complies with California Regulations** – Ultra-low NOx emission output.

Available Models

GMES800403AU
GMES800603AU
GMES800604BU
GMES800804BU
GMES800805CU

Never heard of the Franklin brand?

We're not surprised.

Many homeowners are not aware of the brand or efficiency level of their heating and cooling system. As long as the system is operating and providing reliable heating and cooling everything is fine. Then one day the system stops working. And that's the same day that homeowners briefly reacquaint themselves with their heating and cooling unit!

You may not have heard about the **Franklin** brand of residential heating and cooling systems because the brand is not a nationally advertised brand. In addition, most homeowners purchase a central heating and cooling system just once or twice in their lifetime. Even though you may not have heard of the **Franklin** brand you can rest assured that all **Franklin** brand products are hard working, and are designed to deliver energy-efficient performance for many, many years.

Your local heating and cooling contractor has access to many brands that they can offer, so when they recommend the **Franklin** brand you should know that they have determined that this brand is the best for you, your family and your home.



For complete information on the **Franklin** brand, be certain to visit:

FranklinHVACSystems.com