

Franklin®

Air Conditioning & Heating

80% AFUE Performance

ENERGY EFFICIENT, MULTI-SPEED ECM
MULTI-POSITION GAS FURNACE

GMES80/GCES80



RELIABILITY, EFFICIENCY AND AVAILABILITY

QUALITY YOU CAN DEPEND ON



GMES80/GCES80

Franklin® brand Multi-Speed ECM Gas Furnace ENERGY-EFFICIENT

COMFORT. SAVINGS. PERFORMANCE.

Enjoy the comfort and efficiency

As a homeowner, you want a cost-effective way to maintain a comfortable environment for your family. You've got it with the **Franklin** brand GMES80/GCES80 Multi-Speed Gas Furnace, which provides effective home heating at an affordable price.

Energy efficiency is key to controlling the cost of heating your home. This furnace's 80% AFUE rating means 80 cents of every \$1.00 of heating energy expense warms your home. Some older central heating systems rate at 60% AFUE, meaning only 60 cents of every \$1.00 of heating energy expense warms your home. The remaining 40 cents is lost energy - wasteful and expensive.

The heart of any furnace is the heat exchanger. Our aluminized-steel tubular heat exchanger has been tested to industry standards.

For further safety and reliability, your furnace has a durable hot-surface igniter, and has integrated controls with diagnostics, plus a combination redundant gas valve and regulator.

A comfortable value

When selecting a gas furnace for your home, you are often searching to find the best combination for an ideal level of home comfort. You want to find a gas furnace that offers exceptional, dependable, and stable performance for many, many years. Most important you want the best value possible. Faced with the decision to find a trustworthy and reliable gas furnace that delivers quiet, energy-saving operation and outstanding long-term value, the **Franklin** brand GMES80/GCES80 Multi-Speed ECM Gas Furnace may be your best option. The gas furnace in your home provides not only heating comfort, but it operates with your central air conditioner to deliver cool comfort too. So, your final choice is doubly beneficial. Whether it's the coldest day of the year or any day of the year, with the **Franklin** brand GMES80/GCES80 Multi-Speed ECM Gas Furnace you'll enjoy comfort and value.

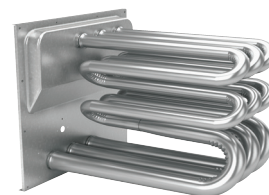
Talk to your Franklin brand dealer about opportunities to optimize the efficiency of your new unit.

Quiet you can count on

Your **Franklin** brand GMES80/GCES80 Gas Furnace uses a multi-speed blower motor and sound-isolated blower assembly to reduce the noise levels common in other furnaces without these features. Add an insulated, heavy-gauge steel cabinet and the result is quiet comfort.

The heart of comfort

The award-winning design of the primary heat exchanger in the Franklin brand GMES80/GCES80 Gas Furnace is unique. It's constructed from tubular aluminized-steel and formed into a dual diameter configuration.



Furthermore, the use of wrinkle-bend technology results in an extremely durable heat exchanger. A heat exchanger often is considered the essential component of any gas furnace. Additionally, this gas furnace has a stainless-steel secondary heat exchanger. This combination offers one of the best levels of reliability, durability, and efficiency you'll find within the **Franklin** brand.

VALUE AND QUALITY

GMES80/GCES80 IMPRESSIVE FEATURES AND BENEFITS

Outstanding warranty* protection



* Complete warranty details available from your local dealer or at FranklinHVACSystems.com. To receive the Lifetime Heat Exchanger Limited Warranty (good for as long as you own your home), 2-Year Unit Replacement Limited Warranty and 10-Year Parts Limited Warranty, online registration must be completed within 60 days of installation. Online registration is not required in California or Quebec.

Additional information

Before purchasing this appliance, read important information about its estimated annual energy consumption, yearly operating cost, or energy efficiency rating that is available from your retailer.



Convenient 33 $\frac{3}{4}$ " height unit

- **Distinctive, Heavy-Duty Heat Exchanger Technology** – Constructed from tubular aluminized-steel, the primary heat exchanger is designed for outstanding durability and heat transfer. The use of wrinkle bend technology maintains the wall strength of the tubular design and aids in the efficient transfer of heat.
- **Multi-Speed ECM Motor Supports Efficiency** - A quiet energy-efficient blower motor uses the lowest speed it can to help deliver precise temperature control in your home. Lower blower motor speeds require less energy consumption, which can help to lower utility bills, compared to single-speed blower motors.
- **Self-Diagnostic Control Board** – Silently and consistently monitors the gas furnace to ensure all furnace components are working properly and helps to achieve the energy-efficient performance too. Also, allows for quick troubleshooting when gas furnace needs maintenance.
- **Insulated Furnace Cabinet** –Even the metal walls of this gas furnace support energy-efficiency. A fully insulated cabinet helps to keep the heat inside the furnace and has less than a 2% air leakage rate. The insulation also assists with noise suppression when the furnace is operating.

Additionally, the **Franklin** brand GMES80/GCES80 Furnace models are designed to minimize NO_x emissions.

Never heard of the Franklin brand?

We're not surprised.

Many homeowners are not aware of the brand or efficiency level of their heating and cooling system. As long as the system is operating and providing reliable heating and cooling everything is fine. Then one day the system stops working. And that's the same day that homeowners briefly reacquaint themselves with their heating and cooling unit!

You may not have heard about the **Franklin** brand of residential heating and cooling systems because the brand is not a nationally advertised brand. In addition, most homeowners purchase a central heating and cooling system just once or twice in their lifetime. Even though you may not have heard of the **Franklin** brand you can rest assured that all **Franklin** brand products are hard working, and are designed to deliver energy-efficient performance for many, many years.

Your local heating and cooling contractor has access to many brands that they can offer, so when they recommend the **Franklin** brand you should know that they have determined that this brand is the best for you, your family and your home.



For complete information on the **Franklin** brand, be certain to visit:

FranklinHVACSystems.com

Can no longer be installed in California's South Coast Air Quality Management District (SCAQMD) on or after October 1, 2019.