



Up to 80% AFUE Performance  
ComfortBridge™ Communicating Technology compatible

VARIABLE-SPEED ECM GAS FURNACE

**GMVC80/GCVC80**



RELIABILITY, EFFICIENCY AND AVAILABILITY

**QUALITY YOU CAN DEPEND ON**



# GMVC80/GCVC80

## Franklin® brand Variable-Speed ECM Gas Furnace ENERGY-EFFICIENT

### COMFORT. SAVINGS. PERFORMANCE.

#### Enjoy the comfort and efficiency

As a homeowner, you try to find a balance between your family's comfort and your monthly energy costs. Introducing the **Franklin** brand GMVC80/GCVC80 Gas Furnace. It's one of the most impressive furnaces we make, and we built it with your comfort in mind.

**Franklin** brand's GMVC80/GCVC80 Gas Furnace with two-stage heating and a variable-speed circulating blower provides a total comfort home-heating alternative - efficiently and economically. This furnace's variable-speed circulating blower advances home comfort by reducing temperature swings and air stratification from floor to ceiling, which reduces operating costs compared to furnaces without these features. Unlike non variable-speed furnaces that run "all on" or "all off", a **Franklin** brand variable-speed furnace typically runs 90% of the time in the low-heat capacity on most days, but when the weather is very cold, ramps up to high-heat capacity so that your family stays warm and snug.

Your **Franklin** brand furnace uses a multi-speed induced draft blower motor and variable-speed circulating blower to reduce the noise levels common in other furnaces without these features. Since this unit typically runs in low-heat stage 90% of the time, the impact of the normal high-fire sound is eliminated up to 90% of the time. Add to that a fully insulated, heavy-gauge steel cabinet, and the result is... quiet comfort.

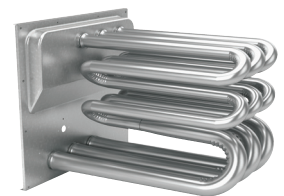
### A comfortable value

When selecting a gas furnace for your home, you are often searching to find the best combination for an ideal level of home comfort. You want to find a gas furnace that offers exceptional, dependable, and stable performance for many, many years. Most important, you want the best value possible. Faced with the decision to find a trustworthy and reliable gas furnace that delivers quiet, energy-saving operation and outstanding long-term value, the **Franklin** brand GMVC80/GCVC80 Variable-Speed ECM Gas Furnace may be your best option. The gas furnace in your home provides not only heating comfort, but it operates with your central air conditioner to deliver cool comfort, too. So, your final choice is doubly beneficial. Whether it's the coldest day of the year or any day of the year, with the **Franklin** brand GMVC80/GCVC80 Gas Furnace you'll enjoy comfort and value.

Talk to your **Franklin** brand dealer about opportunities to optimize the efficiency of your new unit.

### The heart of comfort

The award-winning design of the primary heat exchanger in the **Franklin** brand GMVC80/GCVC80 is unique. It's constructed from tubular aluminized-steel and formed into a dual diameter configuration.



Furthermore, the use of wrinkle-bend technology results in an extremely durable heat exchanger. A heat exchanger often is considered the essential component of any gas furnace. Additionally, this gas furnace has a stainless-steel secondary heat exchanger. This combination offers one of the best levels of reliability, durability, and efficiency you'll find within the **Franklin** brand.

# VALUE AND QUALITY

## GMVC80/GCVC80 IMPRESSIVE FEATURES AND BENEFITS

### Quality engineering



ComfortBridge off-the-wall communicating technology constantly monitors the performance of select heating and cooling systems. As ComfortBridge communicating technology gathers data, it uses it to make automatic adjustments, as needed; to use the minimum amount of energy required to create consistent and comfortable indoor heating and cooling.

### Outstanding warranty protection



\* Complete warranty details available from your local dealer or at [FranklinHVACSystems.com](http://FranklinHVACSystems.com). To receive the 10-Year Unit Replacement Limited Warranty, Lifetime Heat Exchanger Limited Warranty (good for as long as you own your home), and 10-Year Parts Limited Warranty, online registration must be completed within 60 days of installation. Online registration is not required in California or Quebec.

### Additional information

Before purchasing this appliance, read important information about its estimated annual energy consumption, yearly operating cost, or energy efficiency rating that is available from your retailer.

Convenient 33 $\frac{3}{8}$ " height unit



- **Heavy-Duty Aluminized-Steel Tubular Heat Exchanger** – Constructed from tubular aluminized steel, the primary heat exchanger is designed for outstanding durability and heat transfer. The use of wrinkle bend technology maintains the wall strength of the tubular design and aids in the efficient transfer of heat.
- **Two-Stage Gas Valve** – Reduces energy needed during moderate demand to deliver outstanding comfort and efficiency as compared to single-stage gas valves.
- **ComfortBridge Technology** – Continuously monitors system performance for customized indoor comfort.
- **The CoolCloud<sup>®</sup> HVAC app** – Enables qualified technicians to connect, configure and diagnose select HVAC systems quickly and accurately.
- **Durable Silicon Nitride Igniter** – This advanced energy-efficient technology eliminates the need for a traditional pilot light. The igniter is constructed for both strength and outstanding reliability.
- **Corrosion-Resistant Vent Variable-Speed ECM Blower** – Provides quiet system startup and shutdown with highly-efficient performance.
- **Self-Diagnostic Control Board** – Silently and consistently monitors the gas furnace to ensure all furnace components are working properly and helps to achieve the energy-efficient performance too. Also, allows for quick troubleshooting when gas furnace needs maintenance.
- **Insulated Furnace Cabinet** – Even the metal walls of this gas furnace support energy-efficiency. A fully insulated cabinet helps to keep the heat inside the furnace and has less than a 2% air leakage rate. The insulation also assists with noise suppression when the furnace is operating.



# Never heard of the Franklin brand?

We're not surprised.

Many homeowners are not aware of the brand or efficiency level of their heating and cooling system. As long as the system is operating and providing reliable heating and cooling everything is fine. Then one day the system stops working. And that's the same day that homeowners briefly reacquaint themselves with their heating and cooling unit!

You may not have heard about the **Franklin** brand of residential heating and cooling systems because the brand is not a nationally advertised brand. In addition, most homeowners purchase a central heating and cooling system just once or twice in their lifetime. Even though you may not have heard of the **Franklin** brand you can rest assured that all **Franklin** brand products are hard working, and are designed to deliver energy-efficient performance for many, many years.

Your local heating and cooling contractor has access to many brands that they can offer, so when they recommend the **Franklin** brand you should know that they have determined that this brand is the best for you, your family and your home.



For complete information on the **Franklin** brand, be certain to visit:

**[FranklinHVACSystems.com](http://FranklinHVACSystems.com)**

Can no longer be installed in California's South Coast Air Quality Management District (SCAQMD) on or after October 1, 2019.