

FranklinTM

Air Conditioning & Heating

RESIDENTIAL PRODUCT LINE CARD

12.24



BETTER
VALUE
AND COMFORT

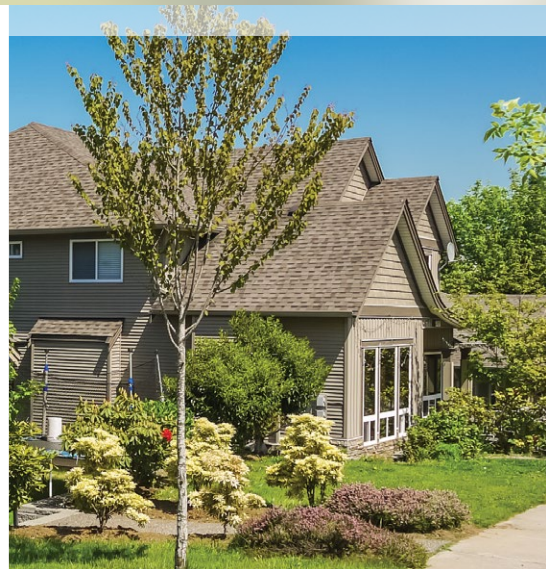
RELIABILITY, EFFICIENCY and AVAILABILITY

QUALITY YOU CAN DEPEND ON



Franklin[™]
Air Conditioning & Heating

QUALITY
YOU CAN DEPEND ON



Designed to be easy to sell, install and maintain, Franklin™ brand residential gas furnaces, air conditioners, heat pumps and packaged products are recognized for both their outstanding performance and value. Featuring the highly sought-after combination of quality and affordability, our full line of Franklin brand products are attractive to homeowners and dealers alike.

Why does the Franklin brand value proposition resonate so well with those who install and maintain our HVAC systems, as well as those who enjoy the indoor comfort they provide? We believe it's the unique blend of reliability, dependability, availability, efficiency, performance and price that we deliver.

For complete information on the Franklin brand, be certain to visit:

FranklinHVACSystems.com



Additional information

Before purchasing this appliance, read important information about its estimated annual energy consumption, yearly operating cost, or energy efficiency rating that is available from your retailer.

SPLIT SYSTEM AIR CONDITIONERS

MODEL					New R-32 Models				
	ASXV9	GSXV9	ASXC7	GSXC7	GXV6S	GLXS5B	GLXS4M	GLXS4B	GLXS3B
Refrigerant	R-410A	R-410A	R-410A	R-410A	R-32	R-32	R-32	R-32	R-32
Lifetime Compressor Limited Warranty*	N/A	●	N/A	●	●	N/A	N/A	N/A	N/A
Unit Replacement Limited Warranty*	Lifetime	10-Year	Lifetime	10-Year	10-Year	N/A	N/A	N/A	N/A
10-Year Parts Limited Warranty*	●	●	●	●	●	●	●	●	●
ComfortBridge™ Compatible	●	●	●	●	ComfortNet™ Only	N/A	N/A	N/A	N/A
SEER2	Up to 23.5	Up to 23.5	Up to 17.2	Up to 17.2	Up to 17.2	Up to 16.5	Up to 15.2	Up to 15.2	Up to 15
Compressor Type	INVERTER Variable-Speed Scroll and Swing	INVERTER Variable-Speed Scroll and Swing	Two-Stage High-Efficiency Scroll	High-Efficiency Two-Stage	INVERTER Variable-Speed Swing	High-Efficiency Scroll	Energy Efficient Scroll	Rotary 1.5-2.5 Scroll 3-5	Rotary 1.5-2.5 Scroll 3-5
ECM Condensing Unit Fan Motor	●	●	●	●	Digitally Commutated	Select Models	Select Models	Select Models	Select Models
High Density Compressor Sound Blanket	●	●	●	●	●	N/A	N/A	N/A	N/A
Factory-Installed Filter Drier	Field-Installed‡	Field-Installed‡	Factory Installed	●	Field-Installed‡	●	●	●	●

‡ Supplied with filter drier loose and requires field installation by contractor.

* Complete warranty details available from your local dealer/contractor or at FranklinHVACSystems.com. To receive the Lifetime Compressor Limited Warranty (good for as long as you own your home), Lifetime Unit Replacement Limited Warranty, (good for as long as you own your home), 10-Year Unit Replacement Limited Warranty and 10-Year Parts Limited Warranty, online registration must be completed within 60 days of installation. Online registration and some of the additional requirements are not required in Florida, California, or Québec. The duration of warranty coverages in Texas and Florida differs in some cases. Other limitations and exclusions apply; refer to complete warranty details for a full list of limitations and exclusions.

Communicating Control System keeps it simple



Ask your dealer for additional information or visit www.FranklinHVAC.com or www.ComfortBridge.com



ComfortBridge™ Technology Compatible

When your new air conditioner/heat pump is paired with a Franklin™ brand gas furnace with ComfortBridge technology, performance data from the split system is gathered and used to make automatic adjustments that may help reduce the amount of energy used to cool your home.

Always in pursuit of innovative ideas, our engineers have designed ComfortBridge technology to help your entire HVAC system cost-effectively operate at peak performance — providing consistent energy-efficient home comfort. ComfortBridge technology works with any single-stage thermostat to help create customized indoor comfort specifically for you and your family.

SPLIT SYSTEM HEAT PUMPS

MODEL					New R-32 Models					
	ASZV9	ASZC7	GSZV9	GSZC7	AZV7S	GZV7S	GZV6S	GLZS5B	GLZS4M	GLZS4B
Refrigerant	R-410A	R-410A	R-410A	R-410A	R-32	R-32	R-32	R-32	R-32	R-32
Lifetime Compressor Limited Warranty*	N/A	N/A	●	●	N/A	●	●	N/A	N/A	N/A
Unit Replacement Limited Warranty*	Lifetime	Lifetime	10-Year	10-Year	Lifetime	10-Year	10-Year	N/A	N/A	N/A
10-Year Parts Limited Warranty*	●	●	●	●	●	●	●	●	●	●
ComfortBridge™ Compatible	●	●	●	●	ComfortNet™ Only	ComfortNet™ Only	ComfortNet™ Only	N/A	N/A	N/A
SEER2	Up to 22.5	Up to 17.2	Up to 22.5	Up to 17.2	Up to 19.0	Up to 19	Up to 19	Up to 16	Up to 15.2	Up to 15.2
HSPF2	Up to 8.2	Up to 8.2	Up to 8.2	Up to 8.2	Up to 8.8	Up to 8.8	Up to 8.8	Up to 8.2	Up to 7.8	Up to 7.8
Compressor Type	High-Efficiency Variable-Speed Swing	High-Efficiency Two-Stage Scroll	High-Efficiency Variable-Speed Swing	High-Efficiency Two-Stage Scroll	High-Efficiency Variable-Speed Swing	High-Efficiency Variable-Speed Swing	High-Efficiency Variable-Speed Swing	High-Efficiency Scroll	Energy Efficient Scroll	Energy Efficient
SmartShift® Defrost Technology	Demand	Time/Temp	Demand	Time/Temp	Intelligent	Intelligent	Intelligent	Time/Temp	Time/Temp	Time/Temp
Factory-Installed Accumulator	●	●	●	●	●	●	●	●	●	●
Crankcase Heater	YES Internal to the compressor	●	YES Internal to the compressor	●	YES Internal to the compressor	YES Internal to the compressor	YES Internal to the compressor	●	●	●
Compressor Sound Blanket	High Density	High Density	High Density	High Density	High Density	High Density	High Density	N/A	N/A	Select Models
Factory-Installed Filter Drier	Field-Installed‡	Factory-Installed	Field-Installed‡	●	Factory Installed	Factory Installed	Factory Installed	●	N/A	N/A

‡ Supplied with filter drier loose and requires field installation by contractor.

* Complete warranty details available from your local dealer/contractor or at FranklinHVACSystems.com. To receive the Lifetime Compressor Limited Warranty (good for as long as you own your home), Lifetime Unit Replacement Limited Warranty, (good for as long as you own your home), 10-Year Unit Replacement Limited Warranty and 10-Year Parts Limited Warranty, online registration must be completed within 60 days of installation. Online registration and some of the additional requirements are not required in Florida, California, or Québec. The duration of warranty coverages in Texas and Florida differs in some cases. Other limitations and exclusions apply; refer to complete warranty details for a full list of limitations and exclusions.

Franklin™ brand heat pumps for performance you can count on

If you think that the performance of a heat pump is equal to the sum of its parts, then you'll be amazed by Franklin brand R-410A heat pumps. Franklin brand heat pumps contain these standard features:

- Crankcase Heater
- Suction Line Accumulator
- Discharge Muffler
- Compressor Sound Blanket (Select Models)
- Low Pressure/Loss of Charge Switch
- SmartShift® Defrost Technology



Our continuing commitment to quality products may mean a change in specification without notice.

GAS FURNACES

									New R-32 Models				
90+% AFUE	AMVM97**	ACVM97**	GMVM97	GCVM97	GMVC96	GCVC96	GMV596-U†	GM9596-U†	GR9T96	GD9T96	GR9S96	GD9S96	GR9S92
R-32 Ready?	With a Furnace Integration Kit	With a Furnace Integration Kit	With a Furnace Integration Kit	With a Furnace Integration Kit	With a Furnace Integration Kit	With a Furnace Integration Kit	With a Furnace Integration Kit	With a Furnace Integration Kit	YES	YES	YES	YES	YES
Will it work with an R-410A system?	YES	YES	YES	YES	YES	YES	YES	YES	Convertible	Convertible	Convertible	Convertible	Convertible
Lifetime Heat Exchanger Limited Warranty*	N/A	N/A	●	●	●	●	●	●	●	●	●	●	●
Unit Replacement Limited Warranty*	Lifetime	Lifetime	10-Year	10-Year	10-Year	10-Year	10-Year	10-Year	10-Year	10-Year	10-Year	10-Year	N/A
10-Year Parts Limited Warranty*	●	●	●	●	●	●	●	●	●	●	●	●	●
ComfortBridge™ Compatible	●	●	●	●	●	●	●	N/A	N/A	N/A	N/A	N/A	N/A
AFUE	Up to 97%	Up to 97%	Up to 97%	Up to 97%	Up to 96%	Up to 96%	Up to 96%	Up to 96%	Up to 96%	Up to 96%	Up to 97%	Up to 96%	Up to 92%
Gas Valve Type	Modulating	Modulating	Modulating	Modulating	Two Stage	Two Stage	Single Stage	Single Stage	Two Stage	Two Stage	Single Stage	Single Stage	Single Stage
Self-Diagnostics Control Board	●	●	●	●	●	●	●	●	●	●	●	●	●
Aluminized Steel Primary Heat Exchanger	N/A	N/A	●	●	●	●	●	●	●	●	●	●	●
Stainless Steel Tubular, Primary Heat Exchanger	●	●	N/A	N/A	N/A	N/A	Stainless Steel	Stainless Steel	N/A	N/A	N/A	N/A	N/A
Stainless Steel Secondary Heat Exchanger	●	●	●	●	●	●	●	●	●	●	●	●	●
Motor Type	Variable-Speed ECM	Variable-Speed ECM	Variable-Speed ECM	Variable-Speed ECM	Variable-Speed ECM	Variable-Speed ECM	Variable-Speed ECM	Multi-Speed ECM	Multi-Speed ECM	Multi-Speed ECM	Multi-Speed ECM	Multi-Speed ECM	Multi-Speed ECM
Silicon Nitride Igniter	●	●	●	●	●	●	●	●	●	●	●	●	●
Installation Options	Upflow Horizontal	Downflow Horizontal	Upflow Horizontal	Downflow Horizontal	Upflow Horizontal	Downflow Horizontal	Upflow Horizontal	Upflow Horizontal	Upflow Horizontal	Downflow Horizontal	Upflow Horizontal	Downflow Horizontal	Upflow Horizontal

* Complete warranty details available from your local dealer/contractor or at FranklinHVACSystems.com. To receive the Lifetime Heat Exchanger Limited Warranty (good for as long as you own your home), 10-Year Unit Replacement Limited Warranty and 10-Year Parts Limited Warranty, online registration must be completed within 60 days of installation. Online registration and some of the additional requirements are not required in Florida, California, or Québec. The duration of warranty coverages in Texas and Florida differs in some cases. Other limitations and exclusions apply; refer to complete warranty details for a full list of limitations and exclusions.

† Sold in California only. All Ultra-Low NOx models comply with the 14 ng/J emission limit specified in the South Coast Air Quality Management District (SCAQMD) Rule 1111 and San Joaquin Valley Air Pollution Control District (SJVAPCD) Rule 4905. Learn more at www.aqmd.gov and www.valleyair.org.

					New R-32 Models			
UP TO 80% AFUE	GMVC80	GCVC80	GMV580-U	GM9580-U	GR9T80	GD9T80	GR9S80	GD9S80
R-32 Ready?	With a Furnace Integration Kit	With a Furnace Integration Kit	With a Furnace Integration Kit	With a Furnace Integration Kit	YES	YES	YES	YES
Will it work with an R-410A system?	YES	YES	YES	YES	Convertible	Convertible	Convertible	Convertible
Lifetime Heat Exchanger Limited Warranty*	●	●	●	●	●	●	●	●
Unit Replacement Limited Warranty*	10-Year	10-Year	10-Year	N/A	10-Year	10-Year	N/A	N/A
10-Year Parts Limited warranty*	●	●	●	●	●	●	●	●
ComfortBridge™ Compatible	●	●	●	N/A	N/A	N/A	N/A	N/A
Self-Diagnostics Control Board	●	●	●	●	●	●	●	●
Aluminized Steel Tubular, Dual-Diameter Primary Heat Exchanger	●	●	N/A	N/A	●	●	●	●
Stainless Steel Tubular, Dual-Diameter Primary Heat Exchanger	N/A	N/A	Stainless Steel	Stainless Steel	N/A	N/A	N/A	N/A
Gas Valve Type	Two Stage	Two Stage	Single Stage	Single Stage	Two Stage	Two Stage	Single Stage	Single Stage
Motor Type	Variable-Speed ECM	Variable-Speed ECM	Variable-Speed ECM	Multi-Speed ECM (EEM)	Multi-Speed ECM (EEM)	Multi-Speed ECM (EEM)	Multi-Speed ECM (EEM)	Multi-Speed ECM (EEM)
Silicon Nitride Igniter Type	●	●	●	●	●	●	●	●
Installation Options	Upflow Horizontal	Downflow Horizontal	Upflow Horizontal	Upflow Horizontal	Upflow Horizontal	Downflow Horizontal	Upflow Horizontal	Downflow Horizontal

* Complete warranty details available from your local dealer/contractor or at FranklinHVACSystems.com. To receive the Lifetime Heat Exchanger Limited Warranty (good for as long as you own your home), 10-Year Unit Replacement Limited Warranty and 10-Year Parts Limited Warranty, online registration must be completed within 60 days of installation. Online registration and some of the additional requirements are not required in Florida, California, or Québec. The duration of warranty coverages in Texas and Florida differs in some cases. Other limitations and exclusions apply; refer to complete warranty details for a full list of limitations and exclusions.

† Sold in California only. All Ultra-Low NOx models comply with the 14 ng/J emission limit specified in the South Coast Air Quality Management District (SCAQMD) Rule 1111 and San Joaquin Valley Air Pollution Control District (SJVAPCD) Rule 4905. Learn more at www.aqmd.gov and www.valleyair.org.

AIR HANDLERS

MODELS	New R-32 Models						AMVE Multi-Position	MBVB MODULAR BLOWER	MBVK MODULAR BLOWER
	230V AHVE/ 230V AHVE*13 Multi-Position	115V AHVE/ 115V AHVE*03 Multi-Position	AMVT/ AMVT*13 Multi-Position	AMST/AMST*13 Multi-Position	AWST / AWST*13 WALL MOUNT	ACSF / ACST*13 Ceiling-Mount			
Refrigerant	R-410A / R-32 (230V AHVE*13 is R-32)	R-410A / R-32 (115V AHVE*03 is R-32)	R-410A / R-32 (AMVT*13 is R-32)	R-410A / R-32 (AMST*13 is R-32)	R-410A / R-32 (AWST*13 is R-32)	R-410A / R-32 (ACST*13 is R-32)	R-410A	R-410A	R-410A
Furnace Integration Kit required for R-32 compatibility	N/A	N/A	N/A	N/A	N/A	N/A	N/A	•	•
10-Year Parts Limited Warranty *	•	•	•	•	•	•	•	•	•
ComfortBridge™ Compatible	ComfortNet™ Only	ComfortNet™ Only	•	N/A	N/A	N/A	•	•	ComfortNet™ Only
ALL-ALUMINUM Evaporator Coil	•	•	•	•	•	•	•	N/A	N/A
Factory-Mounted TXVs	Factory-mounted EEV	Factory-mounted EEV	•	•	•	Factory-mounted TXV included on the ACST*13	Factory-mounted EEV	N/A	N/A
Tonnage	2 to 5 Ton	2 to 5 Ton	2 to 5 Ton	2 to 5 Ton	1 ½ to 3 Ton	1 ½ to 2 ½ Ton	2 to 5 Ton	1 ½ to 5 Ton	2 to 5 Ton
Motor Type	Variable-Speed ECM	Variable-Speed ECM	Variable-Speed ECM	9 Tap ECM	Multi-Speed ECM	Direct-Drive, Multi-Speed	Variable-Speed ECM	Variable-Speed ECM	Variable-Speed ECM
UL 60335 2-40 Compliant	•	•	•	•	•	•	•	•	•

* Complete warranty details available from your local dealer/contractor or at FranklinHVACSystems.com. To receive the 10-Year Parts Limited Warranty, online registration must be completed within 60 days of installation. Online registration and some of the additional requirements are not required in Florida, California, or Québec. The duration of warranty coverages in Texas and Florida differs in some cases. Other limitations and exclusions apply; refer to complete warranty details for a full list of limitations and exclusions.



COILS

MODELS	New R-32 Models						CHPF Cased	CAUFA/CAUF Uncased	CSCF Slab
	CAPEA/CAPE** / CAPEA*3**	CAPFA/CAPF / CAPFA*3	CHPTA/CHPT / CHPTA*3	CAPTA/CAPT / CAPTA*3	CHPE** / CHPEA*3**	CHPE** / CHPEA*3**			
Refrigerant	R-410A / R-32 (CAPEA*3** is R-32)	R-410A & R-22 / R-32 (CAPFA*3 is R-32)	R-410A / R-32 (CHPTA*3 is R-32)	R-410A / R-32 (CAPTA*3 is R-32)	R-410A / R-32 (CHPEA*3** is R-32)	R-410A	R-410A & R-22	R-410A & R-22	
10-Year Parts Limited Warranty*	•	•	•	•	•	•	•	•	
ALL-ALUMINUM Evaporator Coil	•	•	•	•	•	•	•	•	
AlumaFin7™ Coil	•	•	•	•	N/A	N/A	N/A	N/A	
Rust-Resistant, High-Temperature Thermoplastic Drain Pan	•	•	•	•	•	•	•	•	
Metering Device	EEV	Piston	TXV	TXV	EEV	Piston	Piston	Piston	
Other Features	Upflow, Downflow	Upflow, Downflow	Horizontal	Upflow, Downflow	Horizontal	Horizontal	Upflow, Downflow	Horizontal Slab	

* Complete warranty details available from your local dealer/contractor or at FranklinHVACSystems.com. To receive the 10-Year Parts Limited Warranty, online registration must be completed within 60 days of installation. Online registration and some of the additional requirements are not required in Florida, California, or Québec. The duration of warranty coverages in Texas and Florida differs in some cases. Other limitations and exclusions apply; refer to complete warranty details for a full list of limitations and exclusions.

** Compatible with Goodman SD side discharge inverter (GSXS6 and GSZS6) Amana brand S-series side discharge inverter (ASXS6 and ASZS6) outdoor unit. Modular blower MBVC**00 models are the ONLY ones compatible with the Goodman GTST Connected Thermostat and Amana brand S-series outdoors.

PACKAGED AIR CONDITIONERS

MODEL	GPCH3	GPCM3
10-Year Parts Limited Warranty*	●	●
R-410A Refrigerant	●	●
2023 Compliant	●	●
SEER2	13.4	13.4
Capacity (Tons)	2 to 5	2 to 5
Installation Option	Dedicated Horizontal	Multi Position
Energy-Efficient Compressor Type	●	●
Louvered Condenser Coil Protection	●	●
Heavy-Gauge Galvanized Steel Cabinet	●	●

* Complete warranty details available from your local dealer/contractor or at FranklinHVACSystems.com. To receive the 10-Year Parts Limited Warranty, online registration must be completed within 60 days of installation. Online registration and some of the additional requirements are not required in Florida, California, or Québec. The duration of warranty coverages in Texas and Florida differs in some cases. Other limitations and exclusions apply; refer to complete warranty details for a full list of limitations and exclusions.



Our continuing commitment to quality products may mean a change in specification without notice.

PACKAGED HEAT PUMPS

UNIT	GPHH5	GPHM5	GPHH3	GPHM3	GPDM3	GPGM5	GPGM3	GPUM3
20-Year Heat Exchanger Limited Warranty*	N/A	N/A	N/A	N/A	●	●	●	●
10-Year Parts Limited Warranty*	●	●	●	●	●	●	●	●
R-410A Refrigerant	●	●	●	●	●	●	●	●
2023 Compliant	●	●	●	●	●	●	●	●
SEER2	Up to 15.2	Up to 15.2	13.4	13.4	13.4	Up to 15.2	13.4	13.4
HSPF2/AFUE	6.7	6.7	6.7	6.7	6.7 81%	81%	81%	81%
Capacity (Tons)	2 to 5 Tons	2 to 5 Tons	2 to 5 Tons	2 to 5 Tons	2 to 4 Tons	2 to 5 Tons	2 to 5 Tons	2 to 5 Tons
Energy-Efficient Compressor Type	●	●	●	●	●	●	●	●
Heavy-Gauge Galvanized Steel Cabinet	●	●	●	●	●	●	●	●
Louvered Condenser Coil Protection	●	●	●	●	●	●	●	●
Tubular Heat Exchanger	N/A	N/A	N/A	N/A	Aluminized Steel Dual-Diameter Tubular Heat Exchanger	Aluminized Steel Dual-Diameter Tubular Heat Exchanger	Aluminized Steel Dual-Diameter Tubular Heat Exchanger	Aluminized Steel Dual-Diameter Tubular Heat Exchanger
Installation Option	Dedicated Horizontal	Multi-Position	Dedicated Horizontal	Multi-Position	Multi-Position	Multi-Position	Multi-Position	Multi-Position

* Complete warranty details available from your local dealer/contractor or at FranklinHVACSystems.com. To receive the 20-Year Heat Exchanger Limited Warranty (good for as long as you own your home), and 10-Year Parts Limited Warranty, online registration must be completed within 60 days of installation. Online registration and some of the additional requirements are not required in Florida, California, or Québec. The duration of warranty coverages in Texas and Florida differs in some cases. Other limitations and exclusions apply; refer to complete warranty details for a full list of limitations and exclusions.

† This furnace does not comply with the SCAQMD Rule 1111 nor the SJVAPCD Rule 4905 14 ng/J NOx emission limit and therefore is not eligible for installation in California's South Coast Air Quality Management District (SCAQMD) nor the San Joaquin Valley Air Pollution Control District (SJVAPCD).

†† This furnace complies with the SCAQMD Rule 1111 14ng/J NOx emission limit and therefore is eligible for installation in California's South Coast Air Quality Management District (SCAQMD) and San Joaquin Valley Air Pollution Control District (SJVAPCD).

Our continuing commitment to quality products may mean a change in specifications without notice.

© 2024 Goodman Manufacturing Company, L.P.