

Amana brand S-Series
Homeowner
Welcome Packet



Take Comfort.
It's an Amana brand.

Amana is a registered trademark of Maytag Corporation or its related companies and is used under license. All rights reserved.

Premium Amana
Brand Quality

Reliability and Performance
You Can Trust



WELCOME AND THANK YOU

Thank you for choosing the Amana brand *S-Series* Inverter system for your home. Your decision to invest in a state-of-the-art heating and air conditioning solution reflects a commitment to energy efficiency, ideal comfort, and innovative technology. The Amana brand *S-Series* system is designed for you: consistent temperatures, quiet operation, and energy efficiency. We believe

that this system will not only enhance the comfort of your home but also contribute positively to your overall energy consumption. As part of our ongoing commitment to excellence and customer satisfaction, we want to ensure you have a seamless experience with your new system. This welcome packet includes resources and services to help you make the best of your new system.

You may notice the Amana brand *S-Series* is different from a traditional cube style system...



Why does it run longer?

The Amana brand *S-Series* may operate for long periods, but this doesn't mean it is inefficient. In fact, with an inverter system, you'll benefit from outstanding efficiency. Inverter technology adjusts the compressor's speed and output to maintain your desired temperature precisely, helping limit energy waste. This results in a consistent indoor climate (comfort) and low overall energy consumption. You may see this reflected in your energy bill, despite the extended operation period because the inverter system uses the amount of energy required to keep you comfortable.

Why does it sound different?

The Amana brand *S-Series* outdoor unit sounds different because of its innovative inverter technology and variable-speed compressor, which enables the outdoor unit to operate quietly, as low as 45 dB(A) (in quiet mode). Unlike non-inverter systems that operate at full capacity by turning on and off, the Amana brand *S-Series* adjusts continuously, which allows the system to operate consistently at variable speeds, producing a peaceful sound inside and outside.

Why does it look different?

Although traditional cube style systems have provided comfort for years, some systems can be noisy and take up a large area of your lot. Our mission was clear: engineer a system that delivers consistent comfort in a compact, quiet package. The design of the *S-Series* allows for the outdoor unit to be installed as close to 4-inches to the wall of the building. It also has a minimal footprint to maximize space around your home.

Why do I need a Amana brand smart thermostat?

The Amana brand *S-Series* is a communicating system that requires purchasing a Amana brand communicating thermostat to produce total operation and efficiency. Your system becomes a symphony of indoor comfort, with the outdoor unit, indoor unit and thermostat working in harmony together. The Amana brand smart thermostat line of smart thermostats are designed to do that and more!



YOUR COMFORT IS OUR PRIORITY



We love our product and want to make sure you do too!

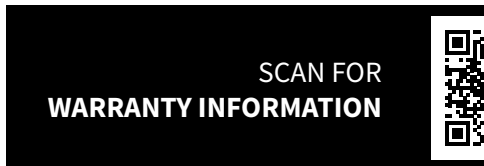
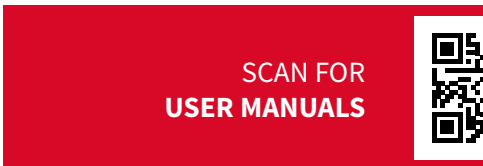
The Amana brand *S-Series* is backed by a 10-Year Parts Limited Warranty* and a 10-Year Unit Replacement Limited Warranty*! Also available are One-time Unit Replacement, and One-time Compressor limited warranties† for years 11 - 99 through an ASURE extended service plan.

Ask your local Amana Advantage contractor (who installed your unit) to help you start the warranty registration process.



* Complete warranty available from your local dealer or at www.amana-hac.com. To receive the 10-Year Parts Limited Warranty and/or 10-Year Unit Replacement Limited Warranty (good for as long as you own your home), online registration must be completed within 60 days of installation. Online registration is not required in California, Florida, or Québec. The duration of warranty coverages in Texas and Florida differs in some cases. Changes in law, regulations, or technology may result in an equivalent unit not being available. Other limitations and exclusions apply, refer to complete warranty details for full list of limitations and exclusions, as well as rights and obligations should an equivalent unit not be available.

† One-time Unit Replacement coverage and One-time Compressor Replacement coverage is available to the original homeowner for years 11-99 after the installation date through an ASURE Extended Service Plan. Complete details about the Extended Service Plan options available from your ASURE dealer.



HELPFUL TIPS FOR IDEAL COMFORT

✓ Things to do after the install:

	Check limited warranty details/needs - register or ask your dealer for support in warranty registration.
	Connect your thermostat to your home Wi-Fi to unlock additional benefits from your new smart HVAC system.
	Activate your access to the Amana brand <i>S-Series</i> homeowner app to your preferred mobile device.
	Download the Amana brand <i>S-Series</i> homeowner app - consider setting schedules for “home” and “away” modes.
	Consider activating your Cloud Services 365/24/7 remote monitoring package for additional peace of mind.

✓ Things to do monthly:

	Check indoor air filters
	Check your outdoor unit and clear away any debris, leaves, etc. that could be blocking airflow around the unit.
	Wash off the outdoor aluminium coil using a standard garden hose.
	Check vents, grilles, and registers throughout your home to make sure they are not blocked, and you are feeling airflow during system operation.
	Ensure drain line is not blocked
	Check monthly energy report via Amana brand <i>S-Series</i> App to check your energy usage is ensure your system is operating as expected.

✓ Things to do seasonally:

	Replace your indoor air filters
	Schedule routine maintenance with your Daikin Pro contractor.
	Check to ensure heat and cool mode is working effectively.
	Check program schedule
	Flush your outdoor drain lines

✓ Things to do biannually:

	Schedule tune-up with your Daikin Pro twice a year for ideal operation.
--	---

✓ Other things to consider:

	Make sure to save this brochure.
	Consider Indoor Air Quality (IAQ) products to help improve your indoor air quality with filtration, humidity control, and ventilation.
	Consider selecting a preventative maintenance plans that you dealer offers.
	Enjoy your home comfort for years to come!

**WE WANT TO HEAR FROM YOU:
TAKE A QUICK SURVEY BELOW.**

<https://bit.ly/FITReview>



BENEFITS OF INVERTER TECHNOLOGY



If you are like some homeowners, you might believe efficiency is simply how well your system maintains your preferred temperature. However, when we talk about efficiency, we are thinking more than achieving your desired comfort condition. The Amana brand *S-Series* was designed to deliver year-round home comfort and effective dehumidification, all with the efficient use of raw materials, compact size, and saving you money in low operational costs year after year.

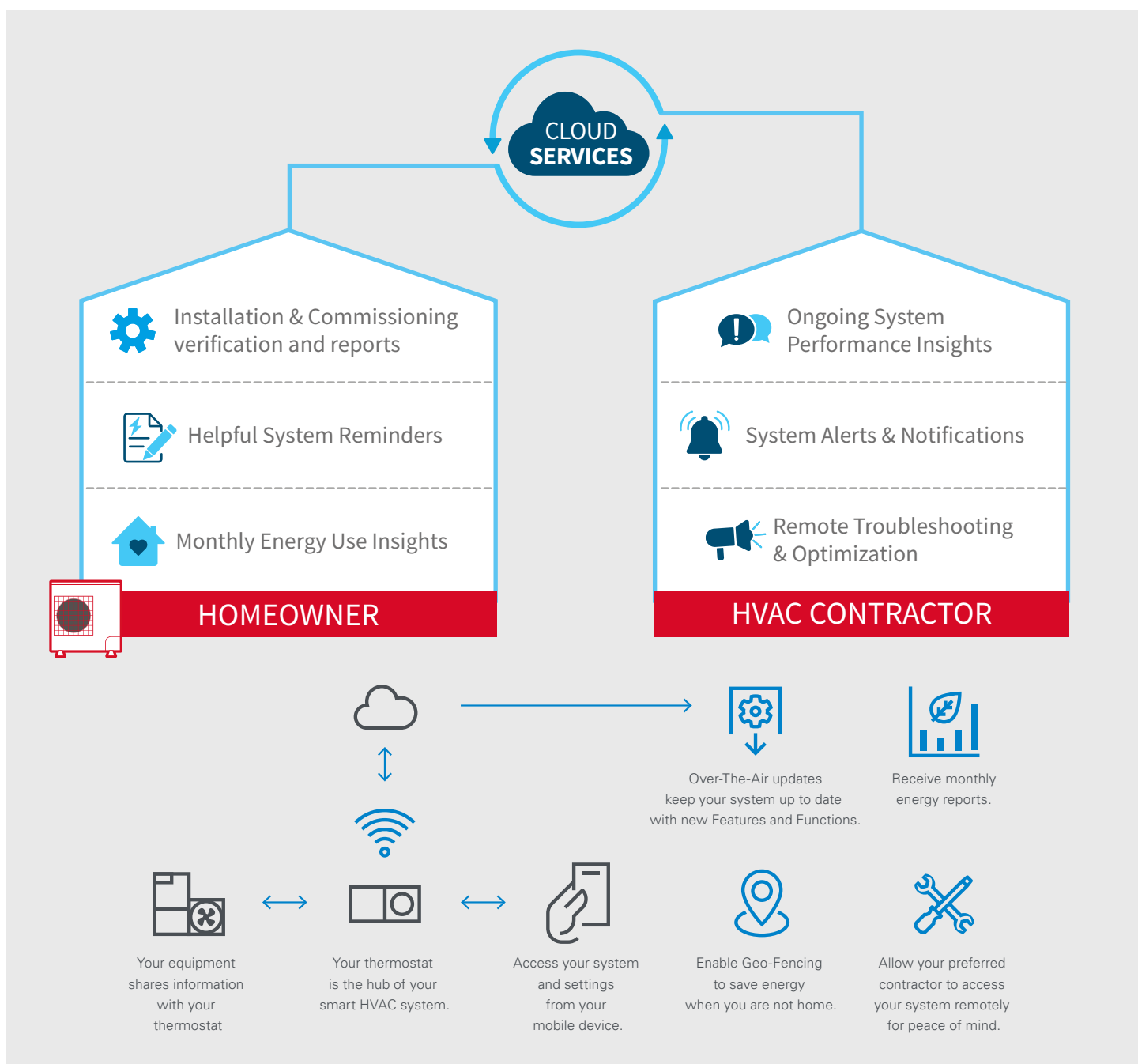


AMANA BRAND INVERTER TECHNOLOGY:

- **Cost Savings:** Overheating and overcooling caused by single- and two-stage systems can waste energy and may drive up energy bills. The Amana brand *S-Series* uses energy-saving technology to efficiently control motor speed within the unit's compressor, so just the right amount of energy is used to reach and maintain your set temperature.
- **Consistent Indoor Temperatures:** Temperature fluctuations and hot and cold drafts often associated with the ups and downs of non-inverter HVAC systems can cause discomfort. The Amana brand *S-Series* makes gradual adjustments in airflow to maintain stable temperatures and provide comfort that feels just right.
- **Balanced Humidity Levels:** Abrupt changes in temperature caused by single-stage systems can leave humidity levels unaddressed. The *S-Series* can maintain steady airflow at extended, energy-saving speeds—allowing for great humidity control and dehumidification in hot and humid climates.
- **Low Sound Levels:** Operating at fixed cycles with frequent starting and stopping can create abrupt sounds and loud noise. *S-Series* systems run at variable speeds, allowing for smooth and quiet operation and peaceful indoor/outdoor environments.
- **Long-Term Reliability:** Cycling on and off frequently may lead to increased strain on components like the compressor and motors. Amana brand inverter technology enables the *S-Series* to run continuously at variable speeds, reducing the wear and tear on parts—resulting in high durability, reliable performance, and long lifespan for the system.

CONNECTED WITH CLOUD COMFORT

Cloud Services connects your HVAC system to Amana brand cloud (Via internet connection), and when enabled by you, connects your system to your servicing contractor. You will enjoy peace of mind not only from, verification of system installation*, but from a 24/7 – 365 connection to Amana brand**, and the knowledge that your system performance is followed by Amana brand, and your servicing contractor has access to system health alerts, performance insights, diagnostics, and even remote access to your system(s) settings – with your approval. Unlock the benefits and peace of mind of connected HVAC today.



* *Quality Install* verifies system installation of Amana brand unitary inverter products

** Requires continuous internet connection

ASURE EXTENDED SERVICE PLAN

Asure

EXTENDED SERVICE PLAN

How Affordable is ASURE?

Isn't your comfort worth only pennies a day? ASURE eliminates the cost of unbudgeted system repairs. ASURE's got you covered today and for years into the future, no matter how much the cost of a service call may increase during that time.

Worry-free coverage.

An ASURE Extended Service Plan gives you the peace of mind that you won't be faced with unexpected repair or part replacement costs for your heating and air conditioning system. We give you comfort, knowing you and your family won't have to endure any long periods without heating or cooling – you're covered!

The ASURE Extended Service Plan complements the standard product limited warranty* by providing labor coverage and additional years of parts coverage, based on the plan selected. Your ASURE dealer can provide you with details on the different coverage options available.

What does the plan cover?

The ASURE Extended Service Plan provides extended coverage for all functional parts of your newly-installed Amana brand air conditioning and heating equipment. If a repair is needed, an authorized ASURE dealer will respond promptly and make repairs with quality Amana brand specific parts.

* Complete warranty details available from your local dealer or at www.Amana-hac.com.

Introducing the Amana brand smart thermostat*.



The Amana brand smart thermostat is compatible with all Amana brand communicating equipment. You and your family can control your indoor comfort with ease through the stylish capacitive touchscreen.

You will appreciate the feature-rich design and intuitive functionality the Amana brand smart thermostat enables the use of non-Amana branded comfort solutions such as humidifiers, external dehumidifiers, or secondary heat source

through an auxiliary output. The Amana brand smart thermostat is also compatible with the Amana brand home app for end-user control from your smart phone, as well as voice control compatibility with Amazon and Google smart devices (with Wi-Fi).

*The Amana brand smart thermostat is a ClimateTalk™ protocol device and is not compatible with ComfortBridge™. Amazon, Alexa, and all related logos are trademarks of Amazon.com, Inc. or its affiliates. Google, Google Assistant, and all related logos are trademarks of Google, or its affiliates.

SCAN TO DOWNLOAD THE
AMANA BRAND S-SERIES HOME APP:



SCAN FOR AMANA BRAND S-SERIES
THERMOSTAT RESOURCES:



DID YOU KNOW YOU MAY STILL BE ABLE
TO TAKE ADVANTAGE OF STATE AND
LOCAL REBATES?

Visit <https://www.amana-hac.com/resources/amana-rebates-center>
to see if you are eligible!





Amana brand products average 4.6 out of 5 stars in homeowner satisfaction with thousands of reviews captured on Amana brand Heating and Air Conditioning products*.

* Collected reviews from Bazaarvoice

Don't just take our word for it...

See the reviews on
www.amana-hac.com/reviews.

**IF YOU HAVE
QUESTIONS,
NEED HELP WITH
REPAIRS, OR GENERAL
SERVICE/SUPPORT:**

Contact your local
Amana brand contractor

FOR ADDITIONAL ASSISTANCE:

Contact our homeowner support team at homeownersupport@daikincomfort.com

ADDITIONAL INFORMATION

Before purchasing this appliance, read important information about its estimated annual energy consumption, yearly operating cost, or energy efficiency rating that is available from your retailer.

R32



A DAIKIN BRAND

Our continuing commitment to quality products may mean a change in specifications without notice.

© 2025 DAIKIN COMFORT TECHNOLOGIES NORTH AMERICA, INC. · Houston, Texas · USA · www.amana-hac.com

Amana® is a registered trademark of Maytag Corporation or its related companies and is used under license. All rights reserved.